



UNITED NATIONS
ECONOMIC COMMISSION FOR EUROPE

Conference on Improving Road Safety in the BSEC Region

18-19 November 2010 Ioannina, Greece



ORGANIZATION OF BLACK SEA
ECONOMIC COOPERATION



Hosted by the Chamber of Ioannina and the Hellenic Chambers Transport Association

Under the auspices of the Ministry of Infrastructure, Transport and Networks

EVOLUTION OF ROAD SAFETY IN BSEC REGION (2000-2009)

ECONOMIC COMMISSION FOR EUROPE (UNECE)

TRANSPORT DIVISION

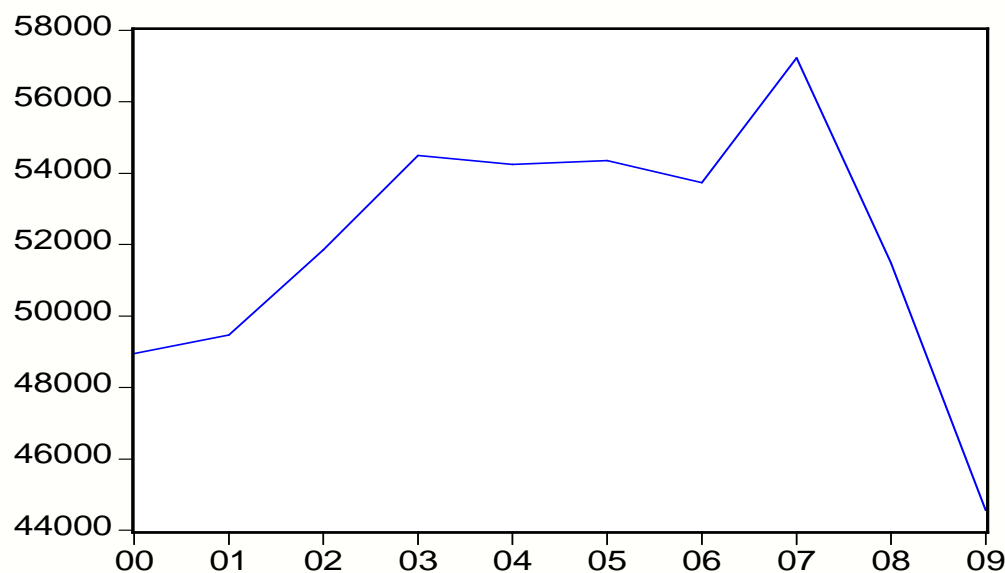
Geneva, 1 November 2010

EVOLUTION OF ROAD SAFETY IN BSEC REGION

1. Number of road fatalities decreased by -13.5% in 2009

In 2009, the number of road fatalities decreased in all BSEC countries (except Albania and Turkey) compared to its level in 2008. For the entire BSEC region, the decrease reached -13.5%, which is an unprecedented result (the best record for the region was -1.1% in 2006). The most important drop in 2009 was registered in Ukraine (-30.5%) followed by Armenia (-20.1%), Bulgaria (-15.1%), Georgia (-14.5%), Russian Federation (-12.9%), Azerbaijan (-11.6%), Romania (-8.7%), Greece (-6.2%), Republic of Moldova (-4.8%) and Serbia (-1.5%).

Figure 1: EVOLUTION OF NUMBER OF KILLED IN BSEC REGION
(2000-2009)

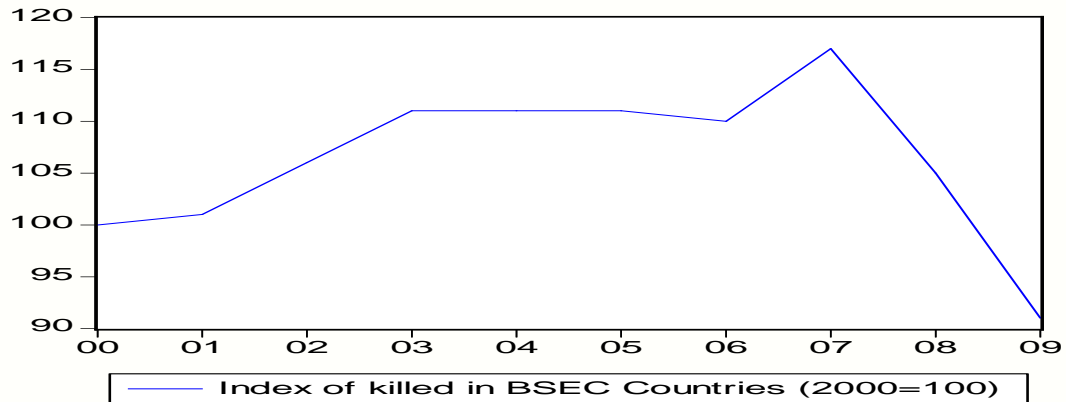


— Number of killed in BSEC Countries in road accidents 2000-2009

Source: UNECE Transport Database

Considering the long-term trends and taking the year 2000 as base (2000=100), the index of fatalities for the BSEC region reached 91 in 2009 (passing for the first time under its level in 2000).

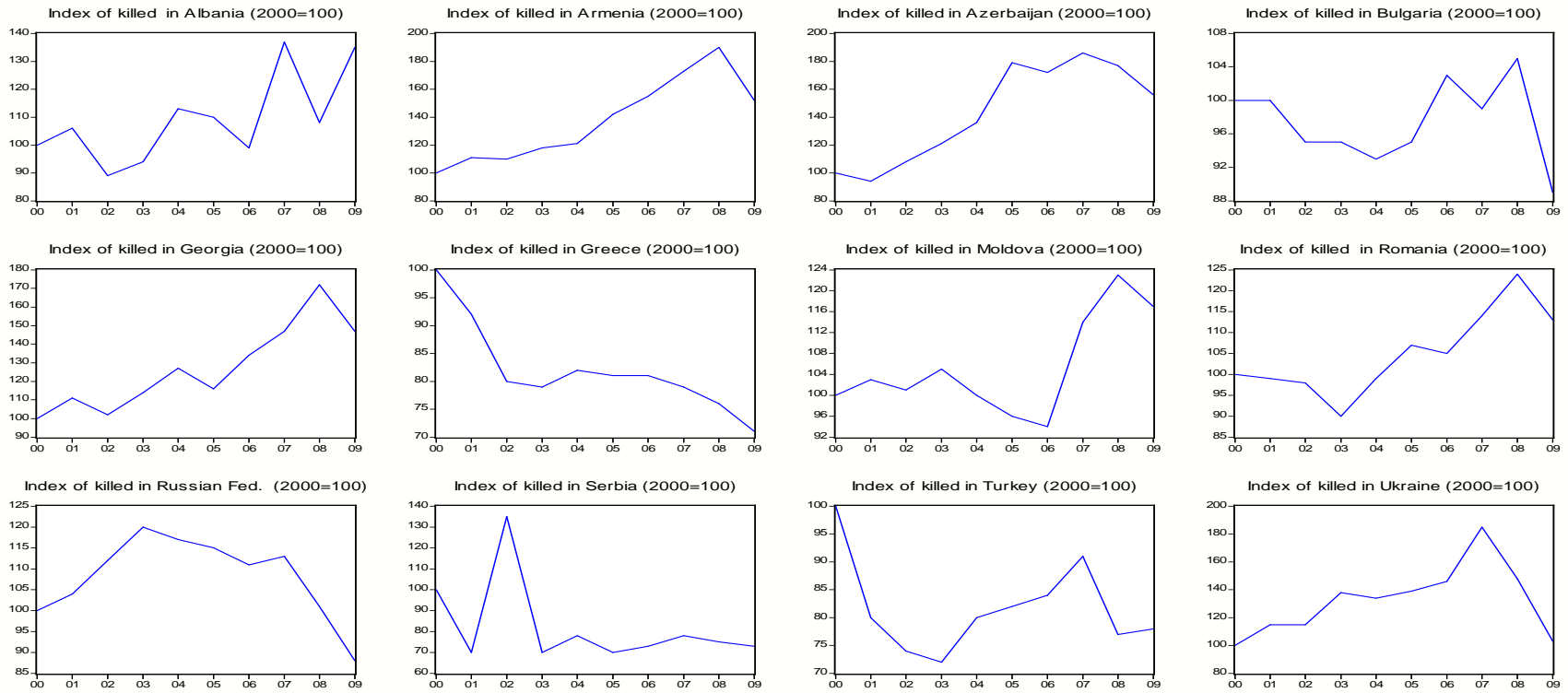
Figure 2: EVOLUTION OF THE INDEX OF KILLED IN BSEC REGION
(2000=100)



Source: UNECE Transport Database

For the decade 2000-2009, the best performances of road fatality index in 2009 were registered in Greece (71), Serbia (73), Turkey (78), Russian Federation (88) and Bulgaria (89).

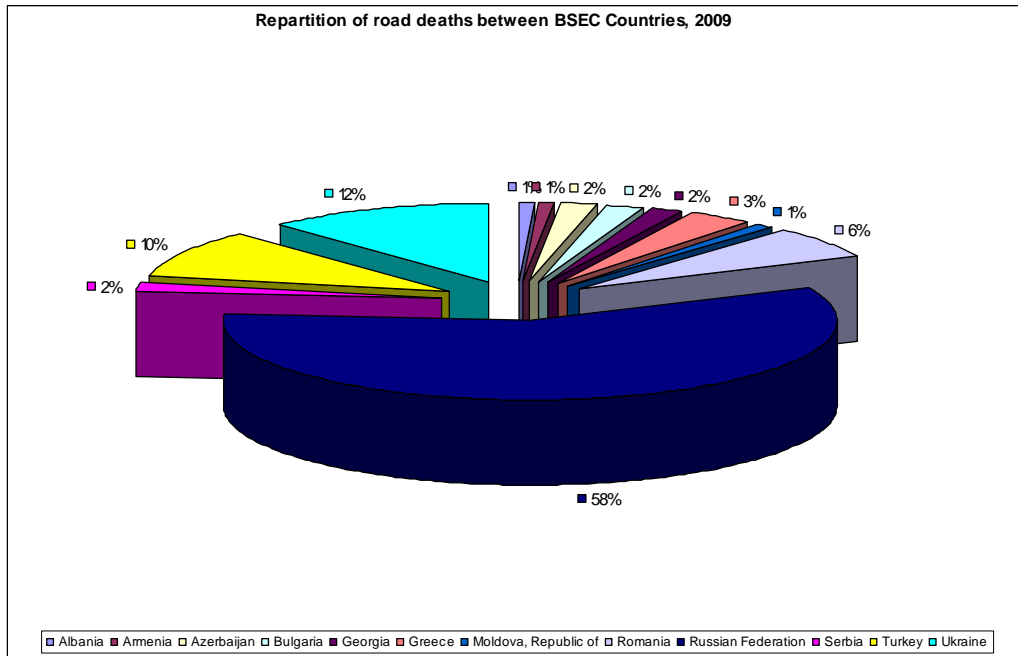
Figure 3: EVOLUTION OF THE INDEX OF KILLED IN EACH BSEC COUNTRY (2000=100)



Source: UNECE Transport Database

The Russian Federation and Ukraine-representing 70% of road fatalities in BSEC-improved their performance in 2008 and 2009, which had a positive impact on the global BSEC performance.

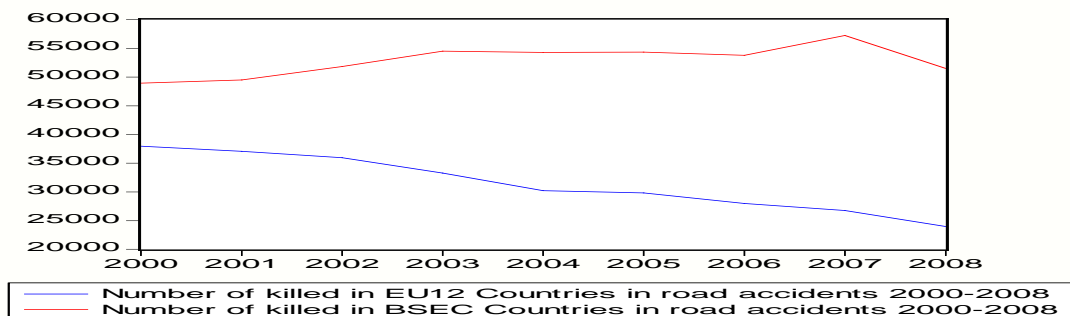
Figure 4: REPARTITION OF ROAD DEATHS BETWEEN BSEC COUNTRIES, 2009



Source: UNECE Transport Database

However, despite this recent improvement in 2008 and 2009, the road fatalities in BSEC countries are too high compared to the performance of EU12, which has a population higher than in BSEC region with higher road density and motorization (In 2000, EU12 population: 355 972 878 and BSEC population: 334 555 561).

Figure 5: COMPARISON BETWEEN EU12 AND BSEC (2000-2009)



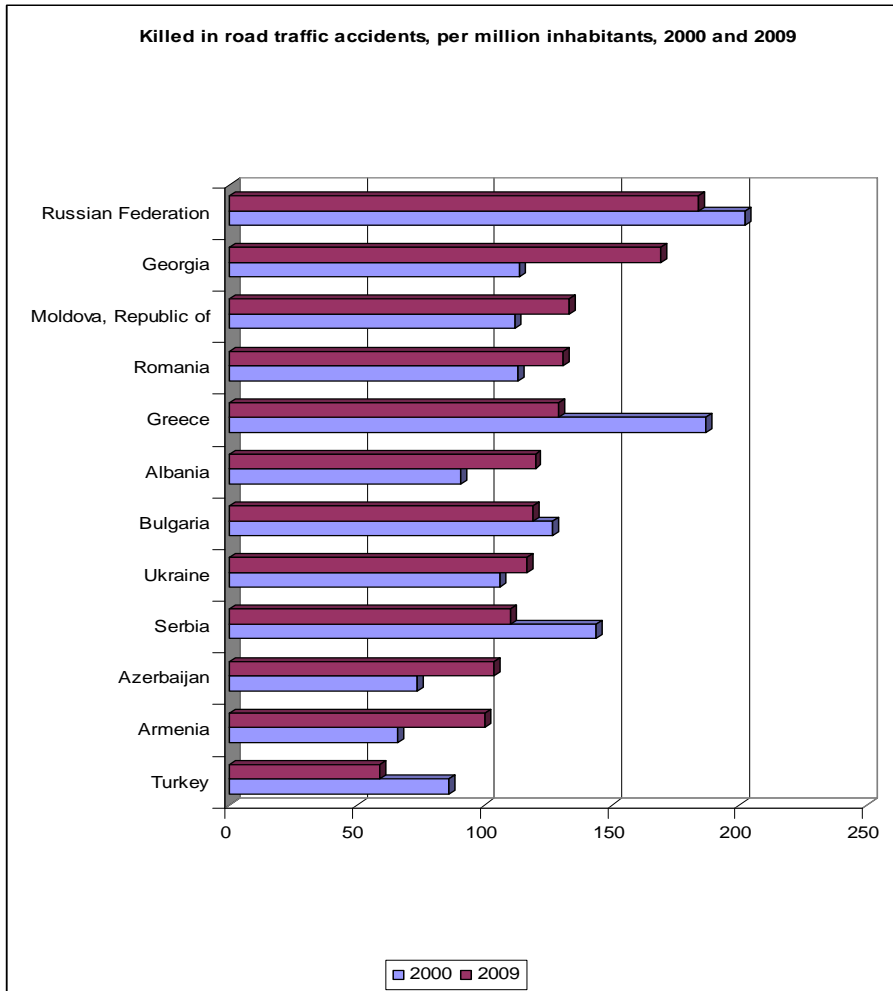
Source: UNECE Transport Database

Comparing the death toll to the population (rate per million inhabitants), the best performance in 2009 was registered in Turkey (59) followed by Armenia (100), Azerbaijan (104), Serbia (110), Ukraine (117), Bulgaria (119), Albania (120), Greece

(129), Romania (131), Rep. of Moldova (133), Georgia (169) and Russian Federation¹ (184).

The graphics below shows that the number of killed per million of inhabitants was in 2009 greater than its level in 2000 for 7 countries: Albania, Armenia, Azerbaijan, Georgia, Republic of Moldova, Romania and Ukraine.

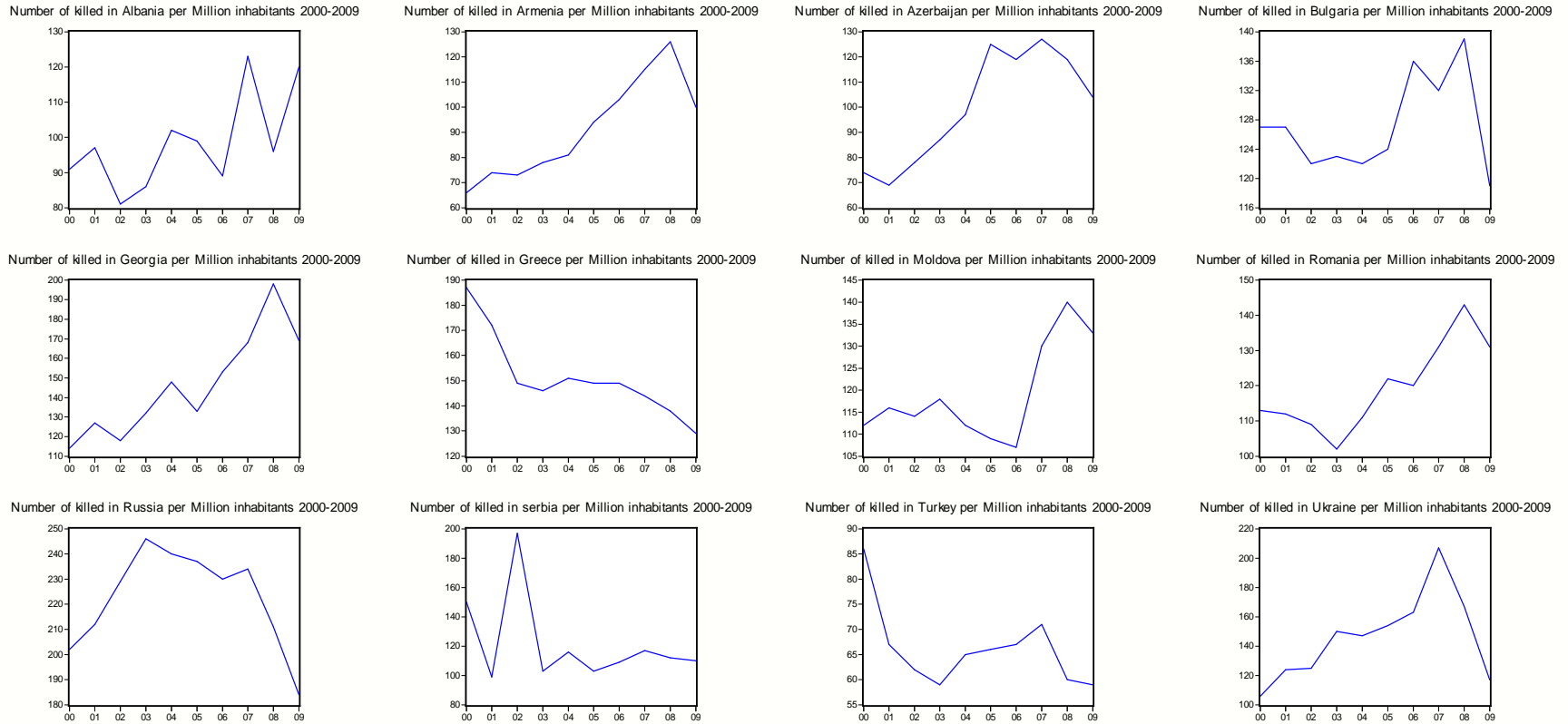
Figure 6: COMPARISON OF KILLED IN ROAD TRAFFIC ACCIDENTS, PER MILLION INHABITANTS, 2000 AND 2009



Source: UNECE Transport Database

¹ For Russian Federation, 2009 population is at the beginning of the year.

Figure 7: EVOLUTION OF KILLED PER MILLION INHABITANTS, IN EACH BSEC COUNTRY (2000-2009)



Source: UNECE Transport Database

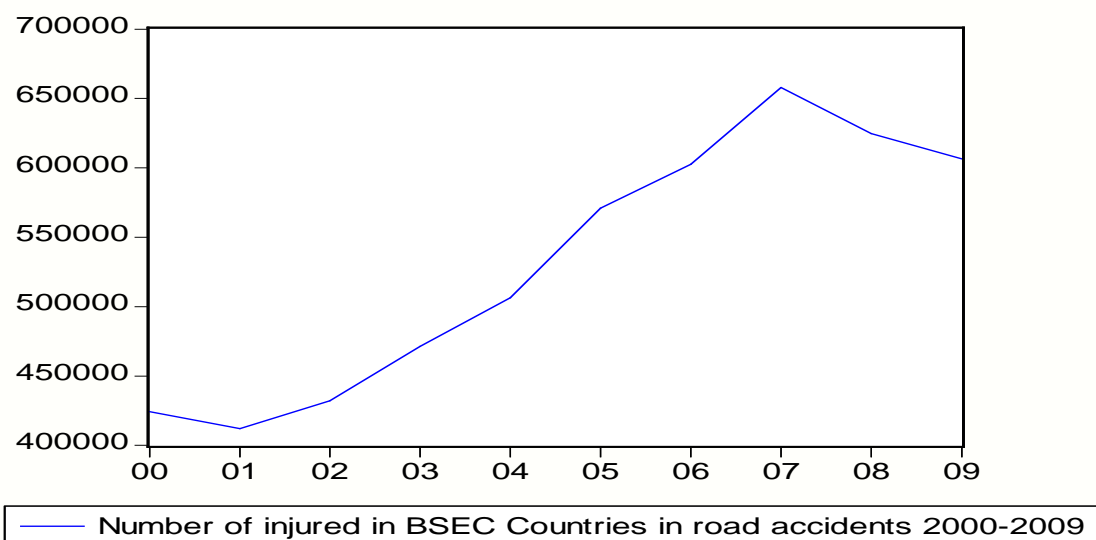
2. Number of road injuries decreased by -2.9% in 2009

In 2009, the number of road injuries decreased in all BSEC countries (except Albania, Republic of Moldova and Turkey) compared to its level in 2008. For the entire BSEC region, the annual evolution was -2.9% in 2009 and -5% in 2008. The most important drop in 2009 was registered in Ukraine (-27.8%) followed by Bulgaria (-12.8%), Armenia (-11.9%), Georgia (-8.2%), Azerbaijan (-5.8%), Russian Federation (-5.1%), Serbia (-3.4%), Greece (-1.9%) and Romania (-1.8%).

Considering the long term evolution and taking the year 2000 as base (2000=100), the index of injuries for the BSEC region reached 143 in 2009, with a peak of 155 in 2007.

The number of road traffic injuries increased considerably in the BSEC region² passing from 424 360 in 2000 to 606 329 in 2009. A positive evolution over the last two years should be noticed: about 51 672 000 potential injured were saved in the region.

Figure 8: EVOLUTION OF NUMBER OF INJURED IN BSEC REGION (2000-2009)

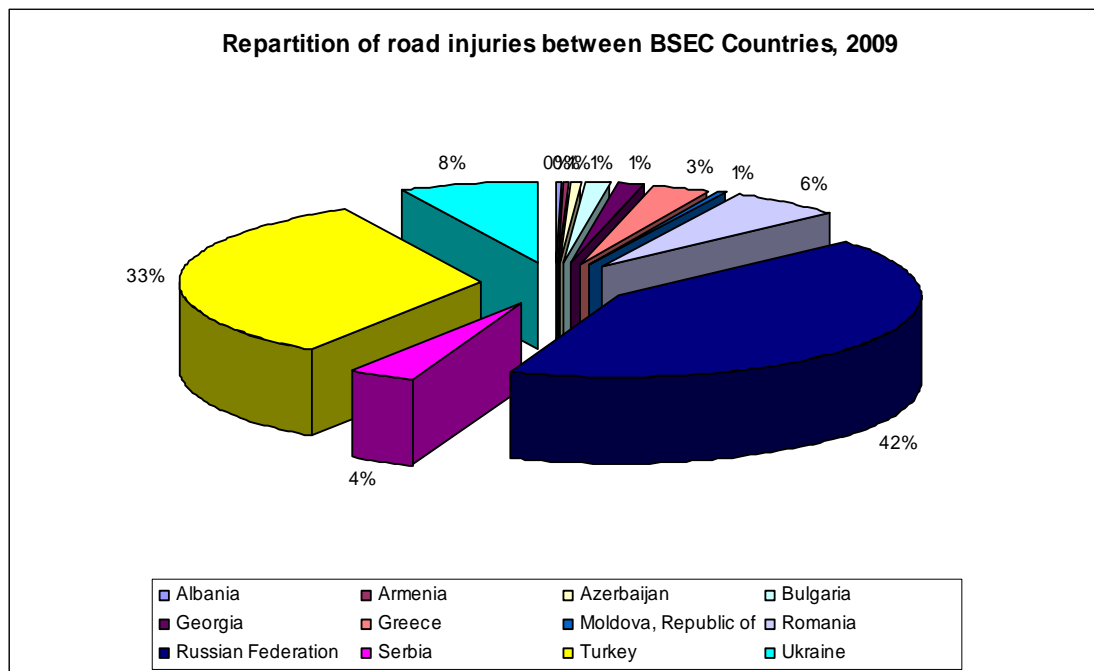


Source: UNECE Transport Database

In 2009, the main part of road traffic injuries is located in four countries: Russian Federation (42%), Turkey (33%), Ukraine (8%) and Albania (6%).

² There is a break of time series for Romania from 2005 due to change in methodology.

Figure 9: REPARTITION OF ROAD INJURIES BETWEEN BSEC COUNTRIES, 2009



Source: UNECE Transport Database

3. Number of road accidents with injuries decreased by -5.6% in 2009

In 2009, the number of road traffic accidents with injuries decreased in all BSEC countries (except Albania and Turkey) compared to its level in 2008. For the entire BSEC region, the drop was -5.6% in 2009 and -5.0% in 2008. The most important drop in 2009 was registered in Ukraine (-27.8%) followed by Bulgaria (-12.1%), Armenia (-9.1%), Georgia (-8.9%), Russian Federation (-6.6%), Azerbaijan (-6.0%), Serbia (-5.1%), Republic of Moldova (-4.9%), Romania (-2.4%) and Greece (-1.9%).

Table 1: ROAD TRAFFIC FATALITIES

Country	2000	2001	2002	2003	2004	2005	2006	2007	2008	2009	Evolution (%) 2008-2009	Evolution (%) 2000-2009
<u>Albania</u>	280	297	250	264	315	307	277	384	303	378	24.8	35.0
<u>Armenia</u>	214	237	235	252	259	310	332	371	407	325	-20.1	51.9
<u>Azerbaijan</u>	596	559	642	724	811	1065	1027	1107	1052	930	-11.6	56.0
<u>Bulgaria</u>	1012	1011	959	960	943	957	1043	1006	1061	901	-15.1	-11.0
<u>Georgia</u>	503	558	515	572	637	581	675	737	867	741	-14.5	47.3
<u>Greece</u>	2037	1880	1634	1605	1670	1658	1657	1612	1553	1456	-6.2	-28.5
<u>Moldova, Rep. of</u>	406	420	412	425	405	391	382	464	500	476	-4.8	17.2
<u>Romania</u>	2466	2450	2411	2229	2442	2629	2587	2800	3061	2796	-8.7	13.4
<u>Russian Fed.</u>	29594	30916	33243	35602	34506	33957	32724	33308	29936	26084 ³	-12.9	-11.9
<u>Serbia</u>	1146	769	1480	769	863	765	808	861	820	808	-1.5	-29.5
<u>Turkey</u>	5510	4386	4093	3946	4427	4505	4633	5007	4236	4300	1.5	-22.0
<u>Ukraine</u>	5185	5984	5982	7149	6966	7229	7592	9574	7690	5348	-30.5	3.1
Total BSEC	48949	49467	51856	54497	54244	54354	53737	57231	51486	44559	-13.5	-9.0

Source: UNECE Transport Database

³ Fatalities within 7 days following the accident.

Table 2: ROAD TRAFFIC INJURIES

Country	2000	2001	2002	2003	2004	2005	2006	2007	2008	2009	Evolution (%) 2008-2009	Evolution (%) 2000-2009
<u>Albania</u>	336	250	228	248	820	875	1065	1344	905	1455	60.8	333.0
<u>Armenia</u>	1163	1258	1213	1294	1492	1773	2089	2720	3125	2753	-11.9	136.7
<u>Azerbaijan</u>	2199	2228	2486	2691	2766	3668	3606	3432	3230	3044	-5.8	38.4
<u>Bulgaria</u>	8030	7984	8100	8488	9308	10112	7179	9827	9952	8674	-12.8	8.0
<u>Georgia</u>	2079	2376	2509	2585	4069	5546	7084	7349	9063	8324	-8.2	300.4
<u>Greece</u>	30763	25881	22459	20737	20179	22048	20675	19766	19010	18641	-1.9	-39.4
<u>Moldova, Rep. of</u>	3147	3390	3505	3216	2042	1898	1916	1973	2369	3288	38.8	4.5
<u>Romania⁴</u>	7245	6751	6805	6472	6710	23200	26128	29604	36177	35524	-1.8	...
<u>Russian Fed.</u>	179401	187790	215678	243919	251386	274900	285400	292200	270900	257034	-5.1	43.3
<u>Serbia</u>	16610	19873	14738	15929	17557	16872	18405	22201	22275	21512	-3.4	29.5
<u>Turkey</u>	136751	116203	116412	118214	136437	154086	169080	189057	184468	200405	8.6	46.5
<u>Ukraine</u>	36636	38196	37916	47458	53636	55999	60018	78528	63254	45675	-27.8	24.7
Total BSEC	424360	412180	432049	471251	506402	570977	602645	658001	624728	606329	-2.9	42.9

Source: UNECE Transport Database

⁴ There is a break of time series for Romania from 2005 due to change in methodology.

Table 3: NUMBER OF ROAD TRAFFIC ACCIDENTS WITH INJURIES

Country	2000	2001	2002	2003	2004	2005	2006	2007	2008	2009	Evolution (%) 2008-2009	Evolution (%) 2000-2009
<u>Albania</u>	428	400	328	363	801	853	1015	1254	1208	1465	21.3	242.3
<u>Armenia</u>	937	1021	1002	1025	1164	1312	1574	1943	2202	2002	-9.1	113.7
<u>Azerbaijan</u>	1987	1985	2196	2311	2388	3179	3197	3104	2970	2792	-6.0	40.5
<u>Bulgaria</u>	6886	6709	6769	6997	7612	8224	8222	8010	8045	7068	-12.1	2.6
<u>Georgia</u>	1708	1940	2011	2113	2936	3870	4795	4946	6015	5482	-8.9	221.0
<u>Greece</u>	23001	19671	16809	15751	15547	16914	16019	15499	15083	14789	-1.9	-35.7
<u>Moldova, Rep. of</u>	2580	2765	2899	2672	2447	2289	2298	2437	2869	2729	-4.9	5.8
<u>Romania</u> ⁵	7889	7528	7453	6942	7335	19819	21905	24661	29307	28612	-2.4	...
<u>Russian Fed.</u>	157596	164403	184365	204267	208558	223342	229140	233000	218000	203603	-6.4	29.4
<u>Serbia</u>	15076	11562	14899	12385	13373	12752	13912	16585	16651	15807	-5.1	4.8
<u>Turkey</u>	75991	66243	65748	67031	77008	87273	96128	106994	104212	110906	6.4	45.9
<u>Ukraine</u>	33339	34541	34488	42409	45592	46485	49491	63554	51279	37049	-27.8	11.1
Total BSEC	327418	318768	338967	364266	384761	426312	447696	481987	457841	432304	-5.6	32.0

Source: UNECE Transport Database

⁵ There is a break of time series for Romania from 2005 due to change in methodology.