

UN/CEFACT Deliverables

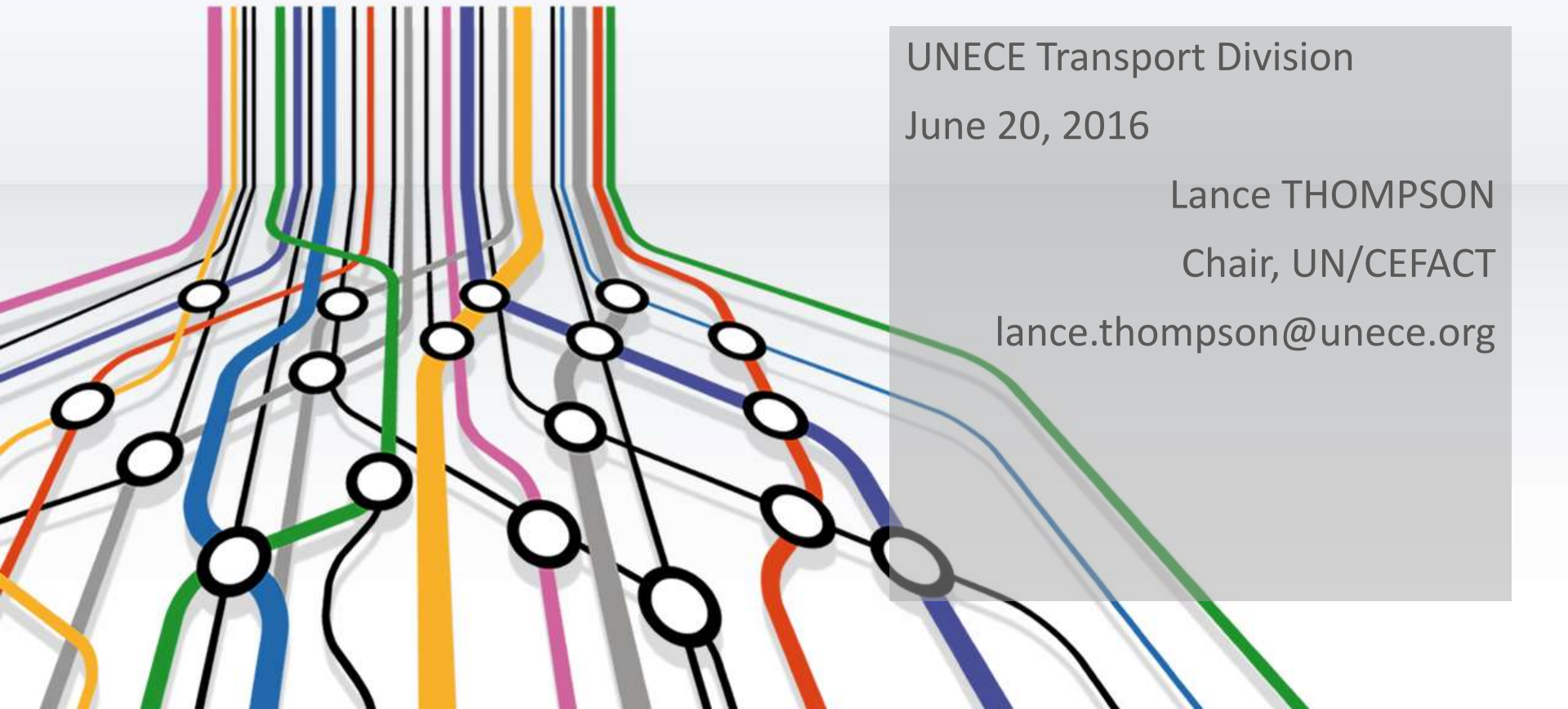
UNECE Transport Division

June 20, 2016

Lance THOMPSON

Chair, UN/CEFACT

lance.thompson@unece.org



What is UN/CEFACT?

- UN/CEFACT = United Nations Centre for Trade Facilitation and Electronic Business
- Objectives
 - Simple, transparent and effective processes for global business
 - Efficient and automated exchange of information
- Outputs
 - Global Trade Facilitation and Electronic Business Recommendations and Standards
- Means
 - Public Private Sector Partnership – over 300 experts from government and business
 - Meet virtually every week plus two Forums per year

UN/CEFACT Mission

- UN/CEFACT's mission is to improve the ability of business, trade and administrative organizations, from developed, developing and transitional economies, to exchange products and relevant services effectively.
- Its principal focus is on facilitating national and international transactions, through the simplification and harmonization of processes, procedures and information flows, and so contribute to the growth of global commerce

UN/CEFACT Deliverables

- Recommendations
 - High level guidance on key points in International Trade
 - Internationally agreed and endorsed by the UN
 - Can also provide code lists for key aspects of trade
- Business Requirements Specifications (BRS)
 - A semantic guide on a given commercial procedure
 - A syntax neutral documentation and conformity rules and requirements for the development of an e-commerce solution
- Requirements Specification Mappings (RSM)
 - A documentation that explains how to construct an electronic message around a specific business need
 - Usually paired with a BRS
- XML Schema, EDIFACT...

Single Window Family of Recommendations

- Rec 33 Recommendation and Guidelines on establishing a Single Window
- Rec 34 Data Simplification and Standardization for International Trade
- Rec 35 Establishing a legal framework for international trade Single Window
- Project on Single Window Interoperability
- Project on SW Operational and Governance issues
- Project on Key vocabulary related to SW

Single Window definition

Recommendation 33 defines a Single Window as:

- a facility that allows **parties** involved in trade and transport to lodge **standardized information and documents** with a **single entry point** to fulfill all import, export, and transit-related **regulatory requirements**.
- If information is electronic, then **individual data elements should only be submitted once**.

Parties involved in trade and transport

Standardized information and documents

Single entry point

Regulatory requirements

Single submission of individual data elements

Source: "Recommendation and Guidelines on establishing a Single Window to enhance the efficient exchange of information between trade and government," Recommendation 33, United Nations, 2005
http://www.unece.org/fileadmin/DAM/cefact/recommendations/rec33/rec33_trd352e.pdf

Recommendation 1: UN Layout Key

- Specifically endorsed in the WCO Revised Kyoto Convention and the WTO TF Agreement
- Provides a common basis for the layout of trade-related documents and the information they contain
 - Basis for the EU Single Administrative Document (SAD)
 - Endorsed by key international organizations
- All data elements in UNLK aligned documents have electronic equivalents in UN/EDIFACT, ebXML, ...
- Recommendation text is currently being revised and updated

UNDocs		EUROPEAN COMMUNITY EXPORT CUSTOMS DECLARATION		A. OFFICE OF ORIGIN EXPORT	
1. Declaration No.		1. Declaration No.		1. Declaration No.	
2. Country		2. Person responsible for financial settlement		3. Date	
3. Country of origin		4. Country of origin		5. Country of destination	
4. Country of origin		6. Country of origin		7. Country of destination	
5. Country of origin		8. Country of origin		9. Country of destination	
6. Country of origin		10. Country of origin		11. Country of destination	
7. Country of origin		12. Country of origin		13. Country of destination	
8. Country of origin		14. Country of origin		15. Country of destination	
9. Country of origin		16. Country of origin		17. Country of destination	
10. Country of origin		18. Country of origin		19. Country of destination	
11. Country of origin		20. Country of origin		21. Country of destination	
12. Country of origin		22. Country of origin		23. Country of destination	
13. Country of origin		24. Country of origin		25. Country of destination	
14. Country of origin		26. Country of origin		27. Country of destination	
15. Country of origin		28. Country of origin		29. Country of destination	
16. Country of origin		30. Country of origin		31. Country of destination	
17. Country of origin		32. Country of origin		33. Country of destination	
18. Country of origin		34. Country of origin		35. Country of destination	
19. Country of origin		36. Country of origin		37. Country of destination	
20. Country of origin		38. Country of origin		39. Country of destination	
21. Country of origin		40. Country of origin		41. Country of destination	
22. Country of origin		42. Country of origin		43. Country of destination	
23. Country of origin		44. Country of origin		45. Country of destination	
24. Country of origin		46. Country of origin		47. Country of destination	
25. Country of origin		48. Country of origin		49. Country of destination	
26. Country of origin		50. Country of origin		51. Country of destination	
27. Country of origin		52. Country of origin		53. Country of destination	
28. Country of origin		54. Country of origin		55. Country of destination	
29. Country of origin		56. Country of origin		57. Country of destination	
30. Country of origin		58. Country of origin		59. Country of destination	
31. Country of origin		60. Country of origin		61. Country of destination	
32. Country of origin		62. Country of origin		63. Country of destination	
33. Country of origin		64. Country of origin		65. Country of destination	
34. Country of origin		66. Country of origin		67. Country of destination	
35. Country of origin		68. Country of origin		69. Country of destination	
36. Country of origin		70. Country of origin		71. Country of destination	
37. Country of origin		72. Country of origin		73. Country of destination	
38. Country of origin		74. Country of origin		75. Country of destination	
39. Country of origin		76. Country of origin		77. Country of destination	
40. Country of origin		78. Country of origin		79. Country of destination	
41. Country of origin		80. Country of origin		81. Country of destination	
42. Country of origin		82. Country of origin		83. Country of destination	
43. Country of origin		84. Country of origin		85. Country of destination	
44. Country of origin		86. Country of origin		87. Country of destination	
45. Country of origin		88. Country of origin		89. Country of destination	
46. Country of origin		90. Country of origin		91. Country of destination	
47. Country of origin		92. Country of origin		93. Country of destination	
48. Country of origin		94. Country of origin		95. Country of destination	
49. Country of origin		96. Country of origin		97. Country of destination	
50. Country of origin		98. Country of origin		99. Country of destination	
51. Country of origin		99. Country of origin		100. Country of destination	

© United Nations Electronic Trade Documents UN/EDIFACT

Use of International Codes / UNECE Recommendations

Rec 7
Date Formats

Rec 8
UNIC

Rec 16
UN/Locode

Rec 5
INCOTERMS

Rec 28
Means of Transport

Rec 3
Country Codes

Rec 19
Mode of Transport

Rec 9
Currency Code

Rec 21
Package Codes

Commodity
Code

Rec 15
Shipping Marks

Rec 20 Units of
Measurement

Rec 24
Status Codes

Other EDIFACT
Code Lists

UNeDocs

EUROPEAN COMMUNITY EXPORT CUSTOMS DECLARATION

1 Consignor / Exporter No. _____

2 Form No. _____

3 Form No. _____

4 Loading date _____

5 Items _____

6 Total packages _____

7 Reference number _____

8 Consignee No. _____

9 Person responsible for financial settlement No. _____

10 Country first _____

11 Trading country _____

12 CAP _____

13 Country of dispatch / export _____

14 Consignee Representative No. _____

15 Country of origin _____

16 Country of final destination _____

17 Country of final destination _____

18 Identity and nationality of means of transport at departure _____

19 Ctr. _____

20 Delivery terms _____

21 Identity and nationality of means of transport crossing the border _____

22 Currency and total amount invoiced _____

23 _____

24 Mode of transport _____

25 Inland mode _____

26 Place of loading _____

27 Financial and banking data _____

28 Office of exit _____

29 Location of goods _____

30 _____

31 _____

32 Article No. _____

33 Commodity code _____

34 Country origin code _____

35 Gross mass (kg) _____

Marks and numbers - Container No(s) - Numbers and kind

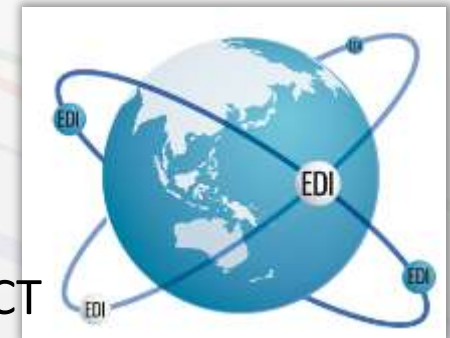
Description of goods

Core Component Library (UN/CCL)

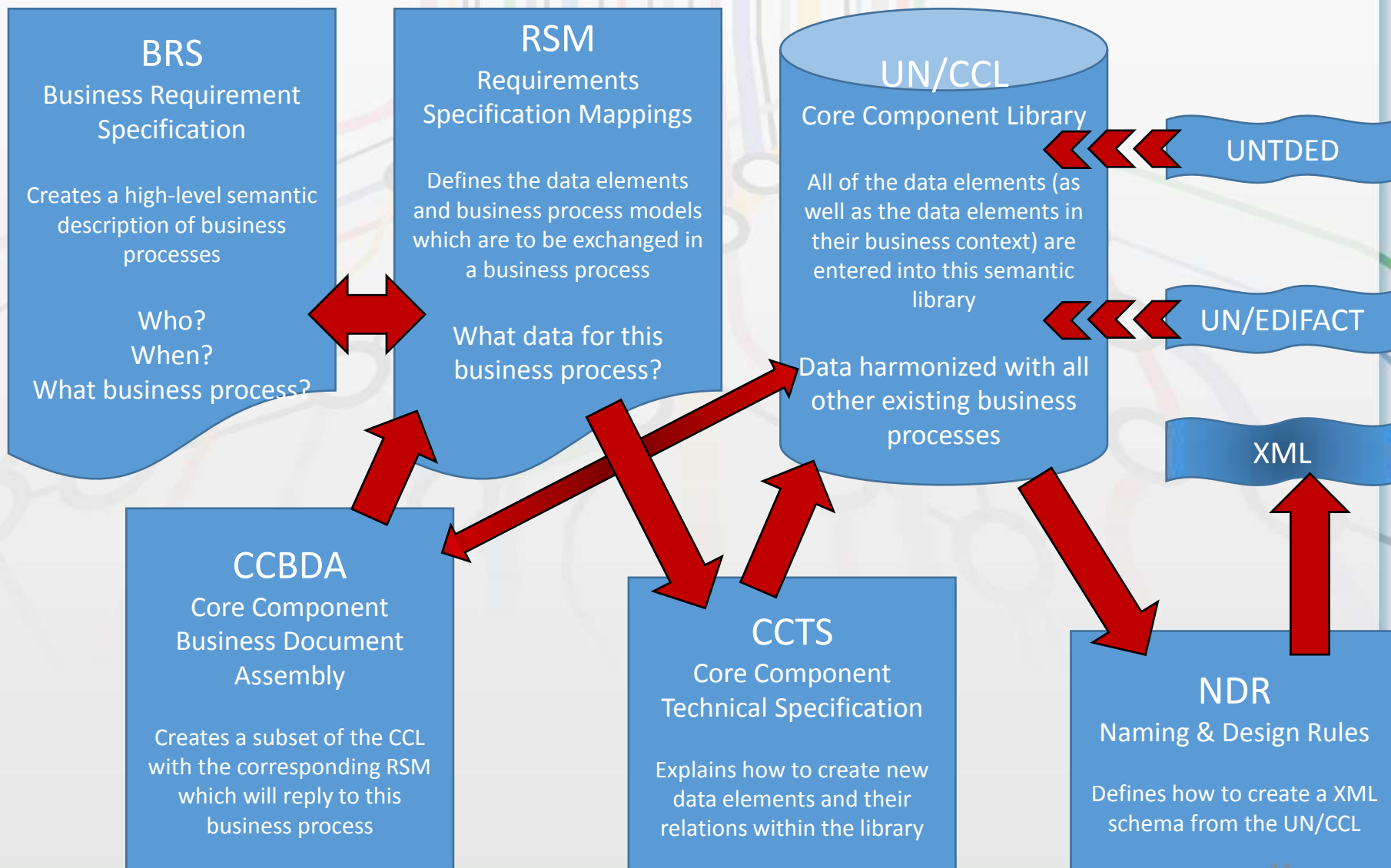
- One of the key deliverables of UN/CEFACT
- Defines all terms related to trade, providing a common semantic content of data and a common format
- Contains over a thousand reusable core components provided in a business context
- Covers all domains of UN/CEFACT (see structure)
- Also integrates requirements from other organizations such as the WCO, SWIFT, GS1, CITES, US Government, German Government, Basel, ACORD, ebXML Asia
- Syntax neutral
 - Can be used to develop messages in specific syntaxes such as EDIFACT or XML etc.

UN/EDIFACT standard for structured business messages

- Comprise a set of internationally agreed standards, directories, and guidelines for the electronic interchange of structured data, between independent computerized information systems.
- Standardized representation of semantics
- Concise data format
- Since approximately 1990
- Semantic directories developed/published by UN/CEFACT
- Syntax jointly developed/published by ISO TC154 and UN/CEFACT
- Probably the largest worldwide use besides paper, with room for specialization (local, industry)
- Decoupling ERP system dependencies in the supply chain
- Over 200 messages covering multiple domains. For example:
 - Customs (customs declaration, cargo report, ...)
 - Commercial (orders, invoices, remittance advice, ...)
 - Transport (Bill of Lading, manifest, ...)
 - Logistics (despatch advice, shipping instruction, inventory report...)
 - Master data (price catalogue, ...)
 - Many industries (retail, DIY, container handling, ...)



Standardizing Business Processes and Data – UN/CEFACT Deliverables



UN/CEFACT Transport and Logistics Domain

- Multi Modal Transport (MMT) Project
 - Will produce a subset of the ebXML CCL containing about 250 core components
 - Will allow a smooth migration from EDIFACT to XML (or eventually any other syntax)
 - Will provide semantic links between CCL and other standards/data dictionnaires (UN/EDIFACT, TDED, ITIGG, WCO data model...)
- Current status of the MMT project:
 - Draft data model and high-level BRS under development
- e-CMR project

UN/CEFACT Transport and Logistics Domain

- BRS and/or RSM currently exist for the following:
 - Draft High level Buy-Ship-Pay
 - International forwarding and transport
 - Commercial transport contract for moving of goods
 - Cargo tracing and tracking
 - Proposed SeDAP project [maritime security with IMO]
- Other
 - Support to current UN/LOCODE work



UN/CEFACT Supply Chain

- Supply Chain Reference Data Model (SCRDM) Project
 - Will produce a subset of the ebXML CCL
 - Will provide semantic links between CCL and UN/EDIFACT
- Current status of the SCRDM Project:
 - Project Proposal with five HoD support
 - Presented to the Bureau for approval on August 31st

UN/CEFACT Supply Chain

- BRS and/or RSM currently exist for the following:
 - Invoice
 - Catalogue information process
 - Delivery process
 - Market survey information supply process
 - Ordering process
 - Quotation process
 - Scheduling
- Other deliverable
 - Project schedule and cost performance management
- Under revision
 - Remittance advice
 - eTendering
 - Contract financial execution management



UN/CEFACT – Other work pertinent to logistics

- Agriculture
 - Sanitary/Phytosanitary Certificates (eCERT)
 - Cattle registration information exchange
 - Fishery control
 - CITES
- Environment
 - Transfrontier movement of waste (Basil convention)
- Customs
 - All customs messages are developed at the World Customs Organization.
 - The data model which the WCO produce is based on the same data types as the UN/CEFACT CCL.
 - The data model follows the same semantic framework as the UN/CEFACT CCL.

UN/CEFACT: getting involved

- Participation is open to all experts (with approval from their national Head of Delegation), **free of charge**
- All UNECE and UN/CEFACT Recommendations, codes, standards and publications are available **free of charge** on our website subject to the UN IPR policy at:
 - www.unece.org/cefact/
 - www.unece.org/
 - www.unece.org/trade
 - www.tfig.unece.org

UN/CEFACT Upcoming meetings

- UN/CEFACT 28th Forum
 - Open to all registered experts
 - September 2016, in Bangkok, THAILAND
- UN/CEFACT 29th Forum
 - Open to all registered experts
 - March 27-31, 2016 in Geneva SWITZERLAND
- UN/CEFACT 22nd Plenary
 - Heads of Delegations and authorized participation only
 - April 3-4, 2016 in Geneva, SWITZERLAND
- Nearly Weekly meetings by working groups by conference calls

UN/CEFACT – Some Contacts

- UNECE Secretariat
 - Maria Ceccarelli Maria.Ceccarelli@unece.org
- International Trade Procedures Domain
 - Paloma Bernal Turnes pb737@georgetown.edu
- Single Window Domain
 - Andrea Fehr Hampton andreafehr@gmail.com
- Transport and Logistics Domain Coordinator
 - Rudolf Bauer rudolf.bauer@paradigma.net
- Supply Chain Domain Coordinator
 - Edmund Gray edmundg@zoho.com
- Agriculture Domain Coordinator
 - Frans van Diepen frans.vandiepen@rvo.nl
- Specification Domain Coordinator
 - Christian Huemer huemer@big.tuwien.ac.at
- Library Focal Point (CCL)
 - Mary Kay Blantz mblantz@sbcglobal.net
- Syntax Focal Point (EDIFACT, XML)
 - Gait Boxman gait.boxman@tie.nl

Thank you for your attention.

Lance THOMPSON
Chair, UN/CEFACT
lance.thompson@conex.net

