

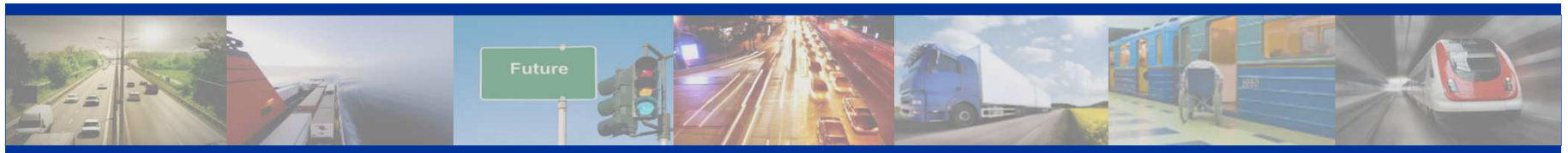


United Nations Economic Commission for Europe Transport Division

Rules of Procedure for GE.1

**2nd Session of GE.1
(Group of Experts on Improving Safety at Level Crossings)
12-13 May 2014**

Rebecca Huang,
Transport Facilitation and Economics Section





Presentation Objectives

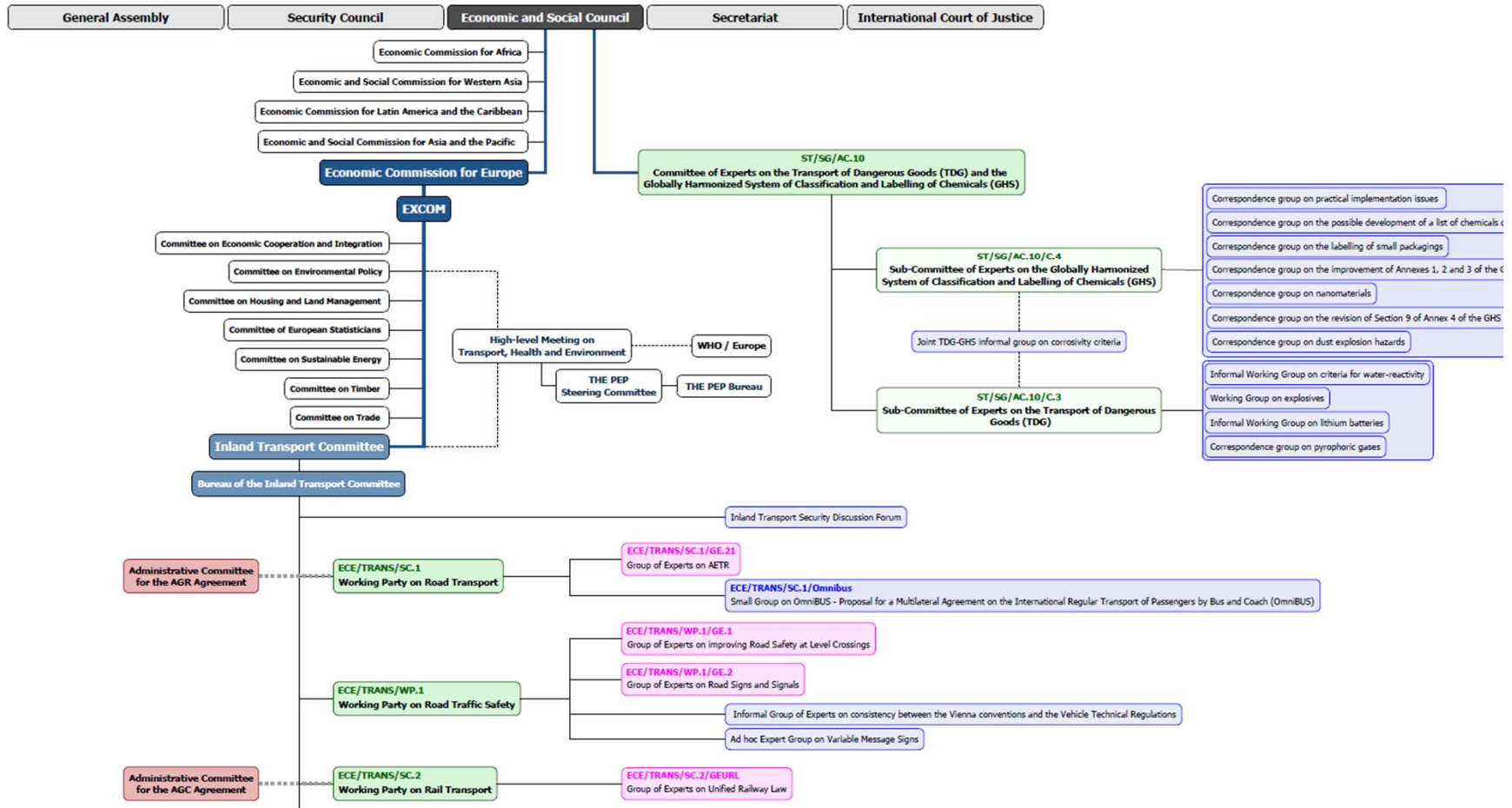
To give you a better appreciation of ...

1. How/where GE.1 sits in the UNECE organizational chart
2. Rules of procedure and guidelines applicable to GE.1 (including most applicable ones)
3. TOR for GE.1
 - Recap
 - Status





http://www.unece.org/fileadmin/DAM/trans/charts/organization_chart/UNECE_Transport_Division_Organizational_Chart_2014.pdf



UNECE - Transport Division



Rules of Procedure and Guidelines applicable to GE.1

1. Terms of Reference and Rules of Procedure of the Economic Commission for Europe (Fifth revised edition, 2009)
E/ECE/778/Rev.5
2. Guidelines on Procedures and Practices for ECE bodies E/ECE/1468 (2013)
3. Terms of Reference for the Working Party on Road Traffic Safety (WP.1) TRANS/WP.1/100/Add.1 (2005) and Guidelines for the Establishment and Functioning of Working Parties within UNECE ECE/EX/1 (2006)
4. Guidelines for the establishment and functioning of teams of specialists within UNECE ECE/EX2/Rev.1 (2010)





Guidelines for ECE Teams of Specialists

Duration

Normally 2 years but can be extended by parent body

Membership

Govt experts and specialists from international organizations, NGOs and the private sector

Methods of work

- At the first meeting, the team adopts its work plan, defines its activities and timeline
- Team identifies resources for the implementation of its activities (ECE regular budget if any, or may raise funds or solicit in-kind contributions)
- Team reports to the annual session of its parent body
- At the end of its duration, team submits a full report on its accomplishments to its parent body





Guidelines for ECE Teams of Specialists

Secretariat's role (with the support of the Team of Specialists)

- Corresponds with experts/team members
- Schedules the meetings
- Cooperates with team members in organizing missions, workshops etc
- In cooperation with the Chairperson of the team, prepares the report on the team's accomplishments at the end of the two year period

Role of the members of the Team of Specialists (with the support of the Secretariat as resources permit)

- Undertake the substantive work (in particular, the preparation of the substantive documentation for the meetings and reports to be submitted to the annual/biennial session of the parent body)





Terms of Reference of GE.1

ECE/TRANS/WP.1/2011/6/Rev.1

«The Group of Experts, based on existing resources of the secretariat, and possibly with additional financial support provided by participating countries and in close collaboration with other international organizations, will take stock of available data to describe, assess and better understand the safety issues at a road/rail interface as well as to develop a multidisciplinary strategic plan aimed at reducing the risk of death and/or injury at level crossings.»





Contact Us

http://www.unece.org/trans/roadsafe/eg_level_crossings_02.html

Rebecca.Huang@unece.org
+41 (0) 22 917 12 86

