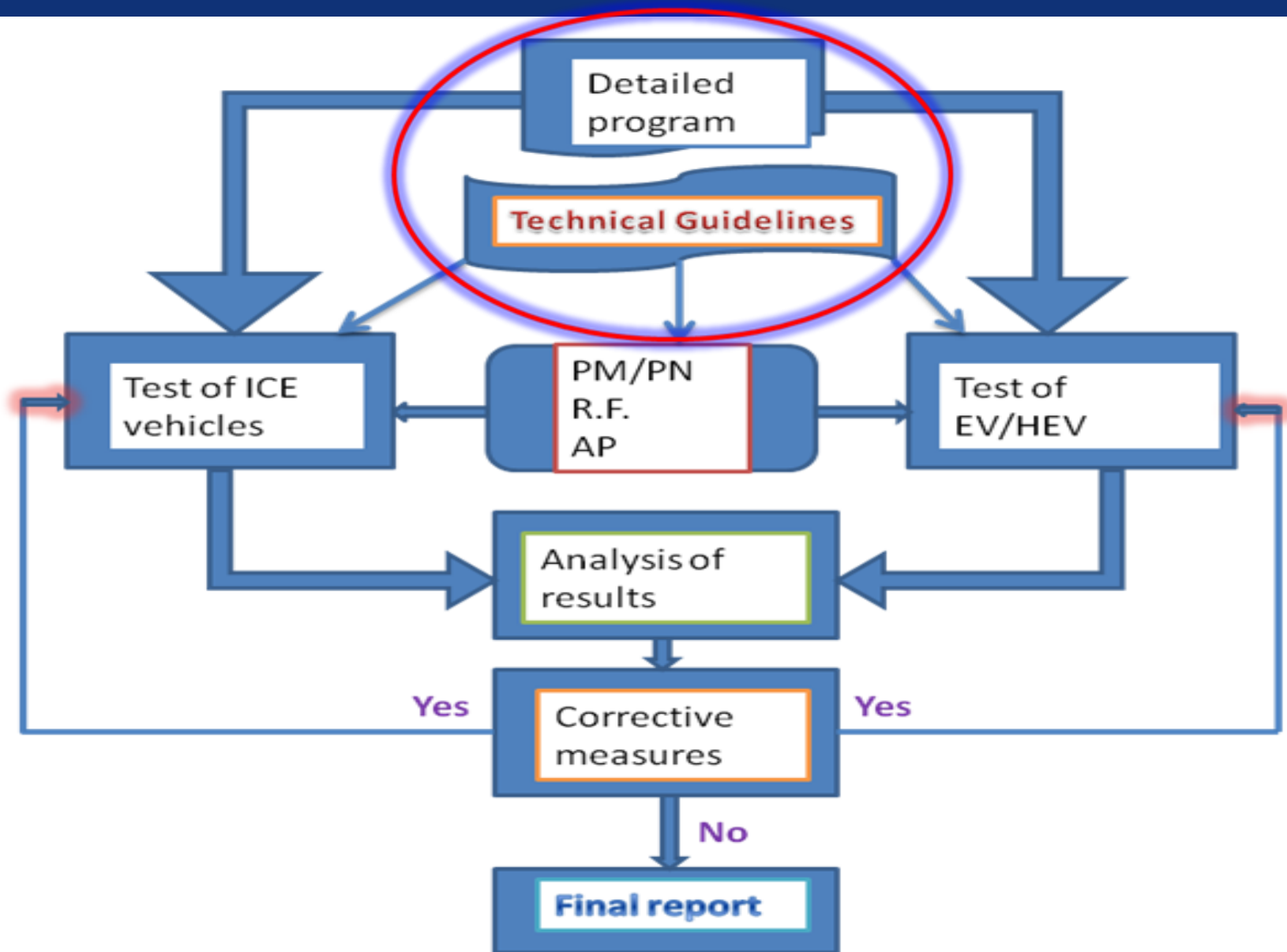


# **WLTP - Validation Phase 2**

## **(acceptability of the new test procedure)**

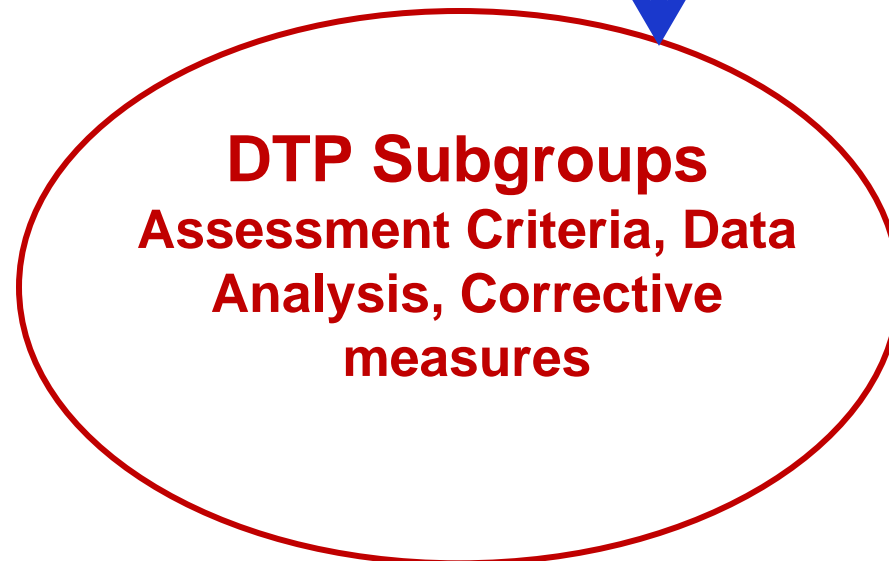
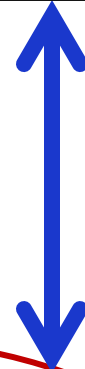
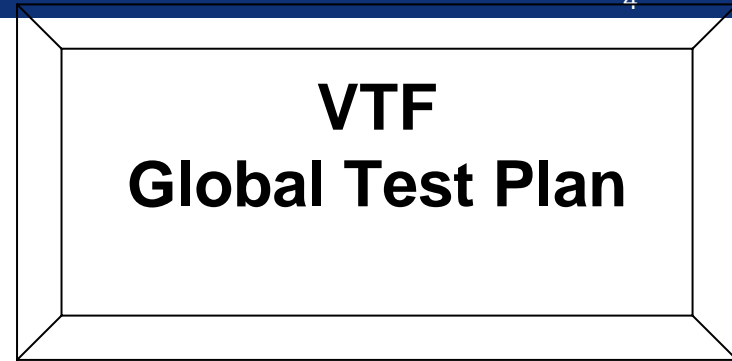
***18 January 2012, update***



# Validation Phase 2

**VTF**  
**Global Test Plan**

# Validation Phase 2



## Validation Phase 2

**VTF**  
**Global Test Plan**

### Single Lab

- ✓ WLTC and Gear Shift strategy
- ✓ Parameter Lists (ICE, E-Lab, PM/PN, AP, Fuels)
- ✓ Test Sequence (i.e. operating instructions for Labs)
- ✓ Mode construction (Cold Start Emissions, 3-4 Bags, Range, etc...)
- ✓ Data reporting (excel template)
- ✓ JRC ftp server
- ✓ Additional Info (interaction with VTF/DTP)

**DTP Subgroups**  
**Assessment Criteria, Data**  
**Analysis, Corrective**  
**measures**

Contracting Party	Laboratory(ies)	Contact Persons
EU	JRC	<a href="mailto:Alessandro.marotta@jrc.ec.europa.eu">Alessandro.marotta@jrc.ec.europa.eu</a> <a href="mailto:Giorgio.Martini@jrc.ec.europa.eu">Giorgio.Martini@jrc.ec.europa.eu</a> <a href="mailto:Urbano.Manfredi@jrc.ec.europa.eu">Urbano.Manfredi@jrc.ec.europa.eu</a>
France	UTAC	<a href="mailto:beatrice.lopez@utac.com">beatrice.lopez@utac.com</a> <a href="mailto:celine.vallaude@utac.com">celine.vallaude@utac.com</a>
Germany	TUEV Rheinland, DEKRA, Klettwitz	<a href="mailto:Heinz.Steven@t-online.de">Heinz.Steven@t-online.de</a>
India	ARAI	<a href="mailto:nakhawa.ecl@araiindia.com">nakhawa.ecl@araiindia.com</a>
Japan	NTSEL, JARI, JAMA	<a href="mailto:nick@ichikawa.tec.toyota.co.jp">nick@ichikawa.tec.toyota.co.jp</a>
Korea	NIER	<a href="mailto:Pjhy98@korea.kr">Pjhy98@korea.kr</a>
The Netherlands	?	<a href="mailto:henk.baarbe@minvrom.nl">henk.baarbe@minvrom.nl</a> <a href="mailto:arijnders@rdw.nl">arijnders@rdw.nl</a>
South Africa	SABS	<a href="mailto:BondM@sabs.co.za">BondM@sabs.co.za</a> <a href="mailto:Vantonap@nracs.org.za">Vantonap@nracs.org.za</a>
Switzerland	AFHB EMPA	<a href="mailto:jan.czerwinski@bfh.ch">jan.czerwinski@bfh.ch</a> <a href="mailto:pierre.comte@bfh.ch">pierre.comte@bfh.ch</a> <a href="mailto:Christian.Bach@empa.ch">Christian.Bach@empa.ch</a>
Austria	?	<a href="mailto:Werner.Tober@ifa.tuwien.ac.at">Werner.Tober@ifa.tuwien.ac.at</a>
AECC	UTAC	<a href="mailto:dirk.bosteels@aecc.eu">dirk.bosteels@aecc.eu</a> <a href="mailto:cecile.favre@aecc.eu">cecile.favre@aecc.eu</a>
OICA	?	<a href="mailto:william.coleman@volkswagen.de">william.coleman@volkswagen.de</a> <a href="mailto:Konrad.kolesa@audi.de">Konrad.kolesa@audi.de</a>
Poland	BOSMAL	<a href="mailto:piotr.bielaczyc@bosmal.com.pl">piotr.bielaczyc@bosmal.com.pl</a> <a href="mailto:stanislaw.radzimirski@its.waw.pl">stanislaw.radzimirski@its.waw.pl</a>
Germany	IAV	<a href="mailto:detlef.volkmer@iav.de">detlef.volkmer@iav.de</a>

## VTF – 2012 Program

- **Validation Phase 2 (provisional start: April 2012)**
- **Road Load Determination (no need for validation ?)**
- **Confirmation Tests (to be completed by December 2012)**