



**C L E P A**  
*European Association of  
Automotive Suppliers*

Informal document **GRB-56-17**  
(56th GRB, 3-5 September 2012,  
agenda item 4)

# R59 : ASEP

P. Steenackers / R. Valgaeren

56<sup>th</sup> GRB  
4 SEP 2012



# Overview

- 4 vehicles
  - 2 petrol
    - Vehicle A PMR = 44.8
    - Vehicle B PMR = 53.4
  - 2 diesel
    - Vehicle C PMR = 52.9
    - Vehicle D PMR = 52.3



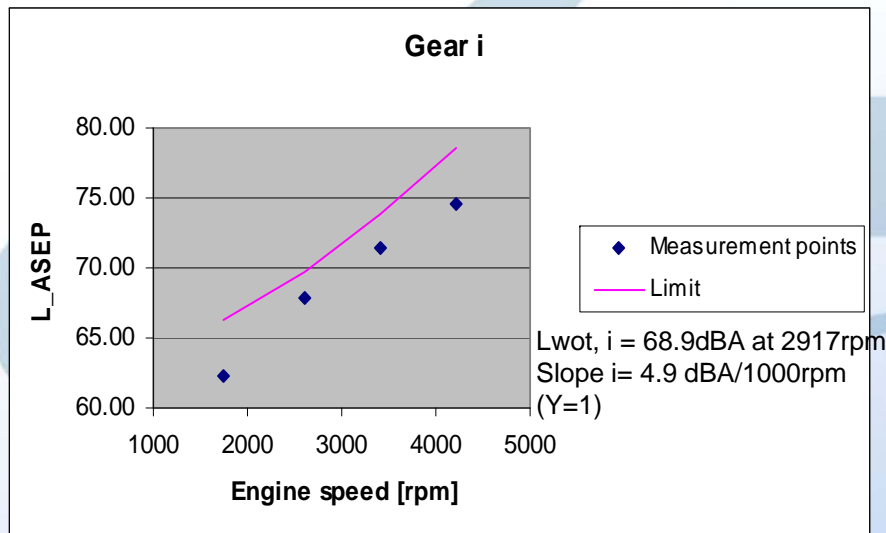
# L urban

[dBA]	OE	Replacement
Vehicle A	69.0	69.3
Vehicle B	69.1	70.3
Vehicle C	72.5	72.3
Vehicle D	70.1	72.2

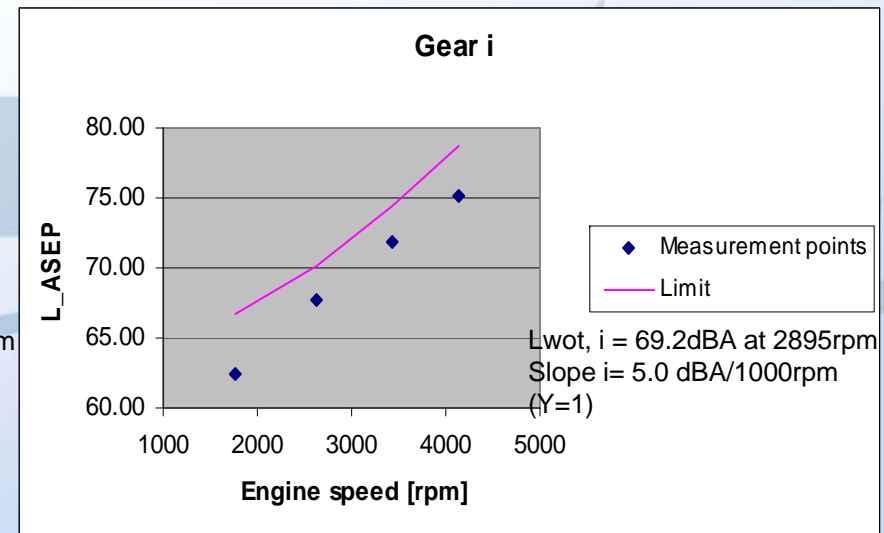


# ASEP: Vehicle A

## OE



## Replacement

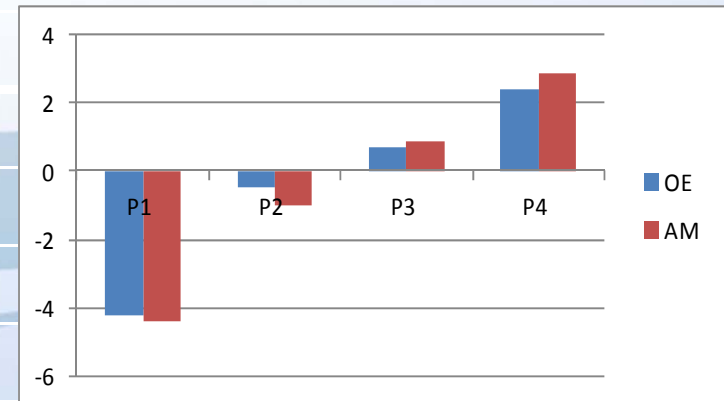




# ASEP: Vehicle A

Alternative calculation L\_Urban\_ASEP according to paragraph 6.2  
(Requirement  $\leq 3.0$ )

<b>i</b>	<b>OE</b>	<b>Repl.</b>
P1	-4.2	-4.4
P2	-0.5	-1.0
P3	0.7	0.9
P4	2.4	2.9



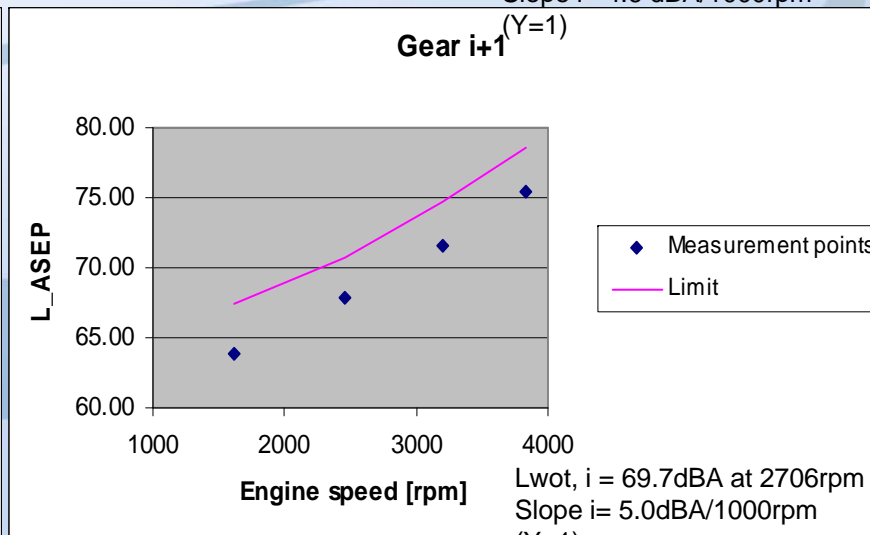
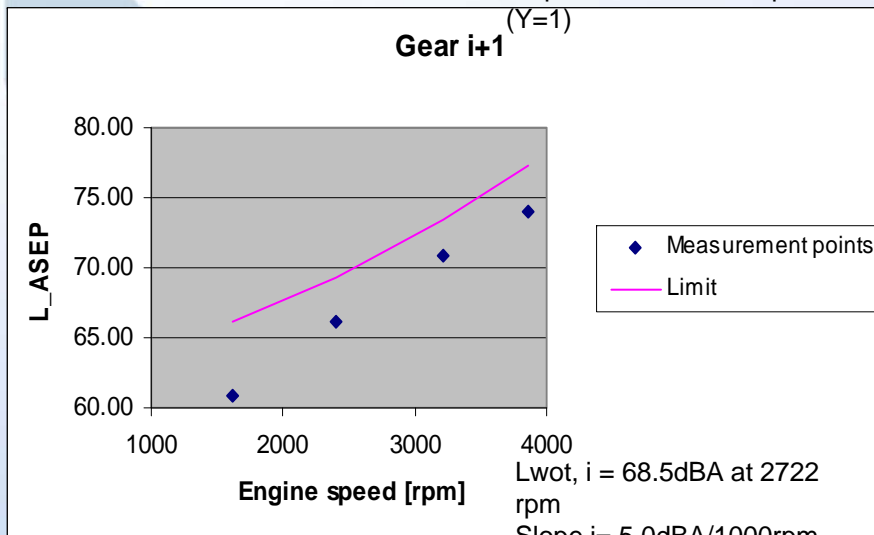
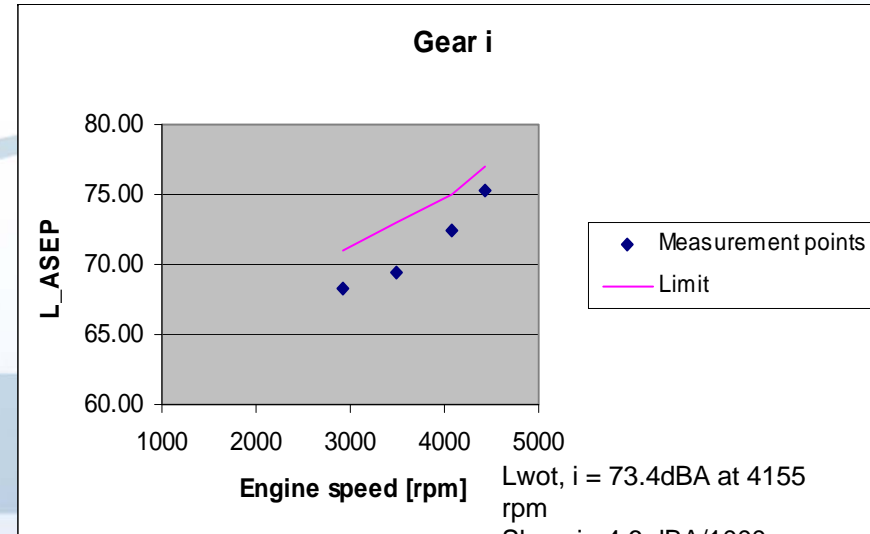
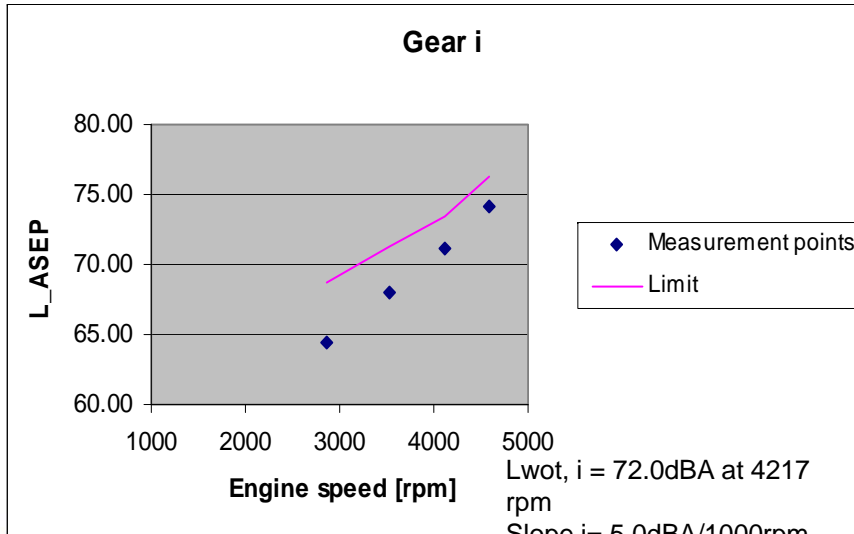


# ASEP: Vehicle B

## OE Replacement

### OE

### Replacement



(Y=1)

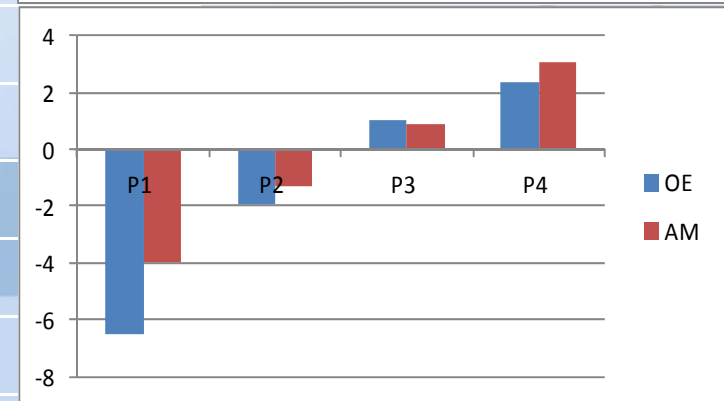
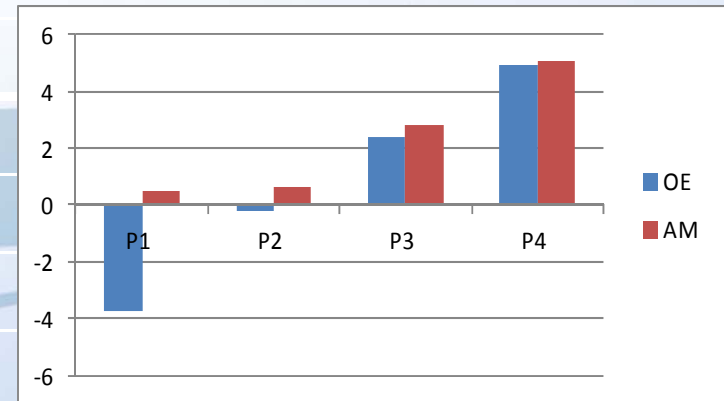
(Y=1)



# ASEP: Vehicle B

Alternative calculation L\_Urban\_ASEP according to paragraph 6.2 (Requirement  $\leq 3.0$ )

<b>i</b>	<b>OE</b>	<b>Repl.</b>
P1	-3.7	0.5
P2	-0.2	0.6
P3	2.4	2.8
P4	4.9	5.1
<b>i+1</b>		
P1	-6.5	-4.0
P2	-1.9	-1.3
P3	1.0	0.9
P4	2.4	3.1

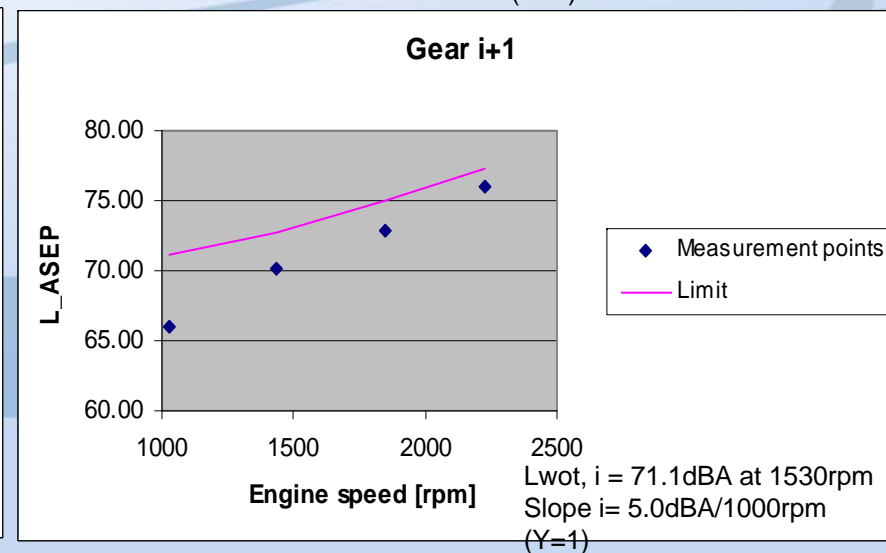
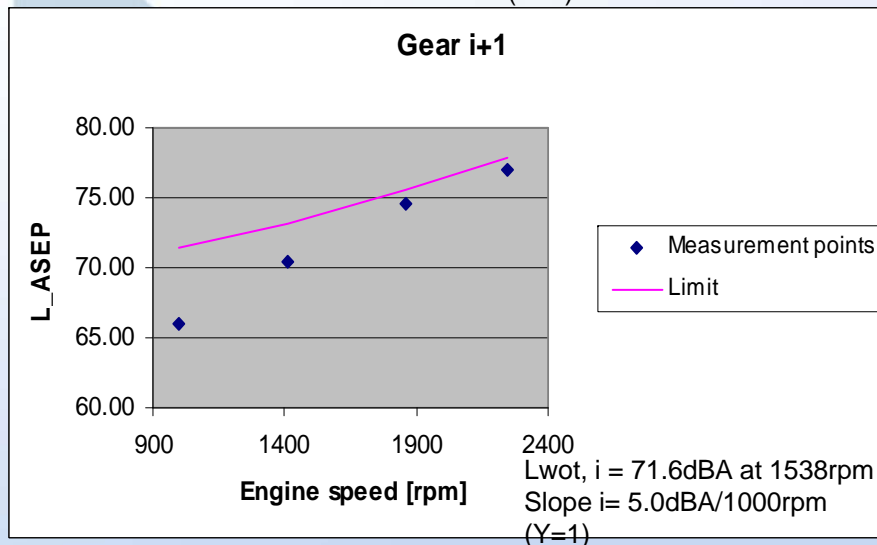
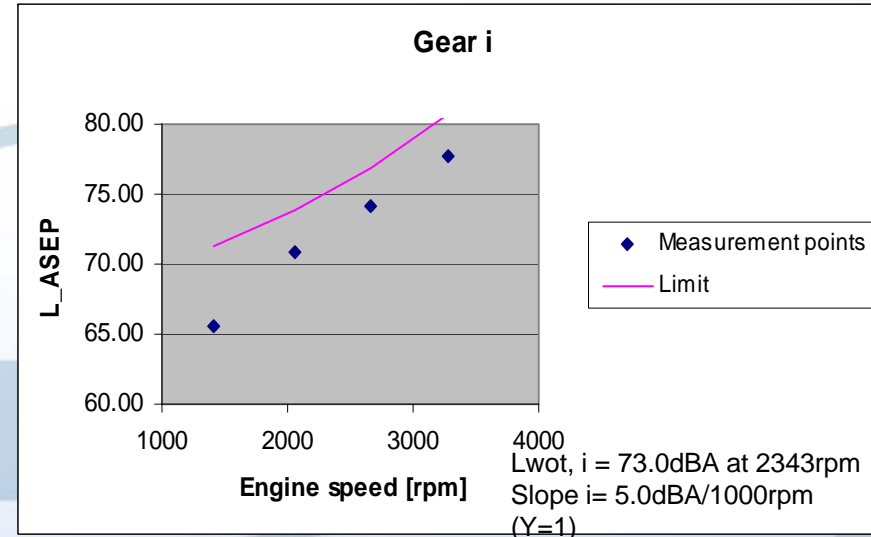
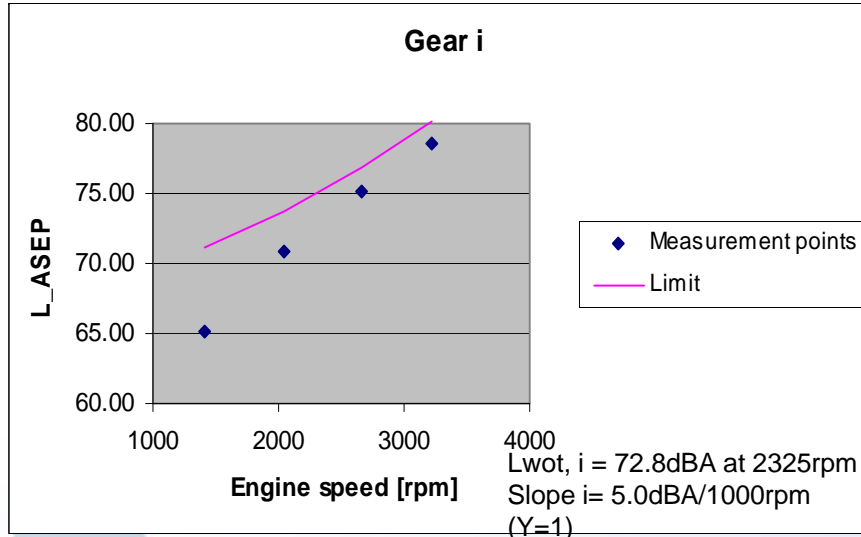




# ASEP: Vehicle C

## OE

## Replacement



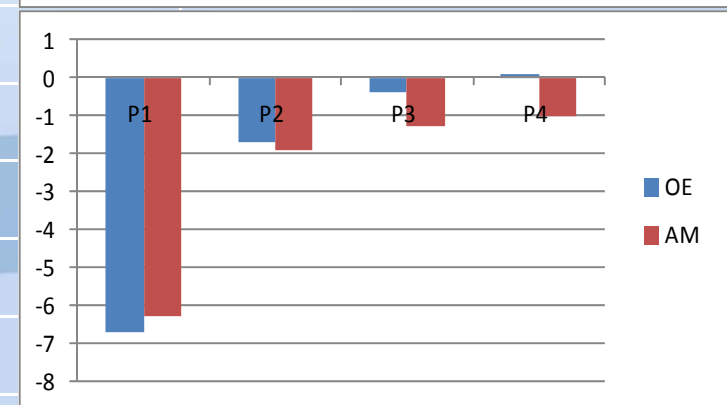
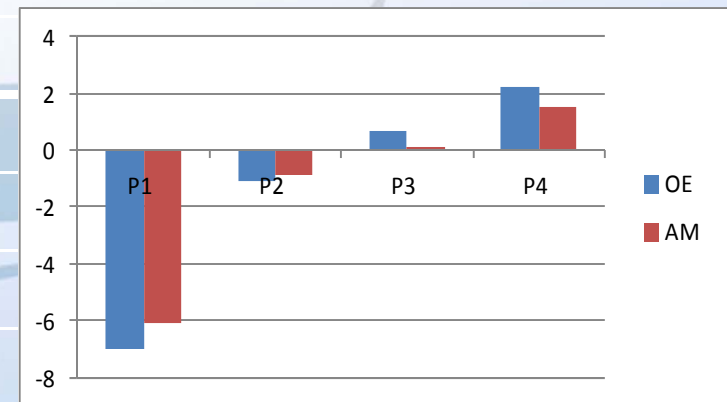




# ASEP: Vehicle C

Alternative calculation L\_Urban\_ASEP according to paragraph 6.2 (Requirement  $\leq 3.0$ )

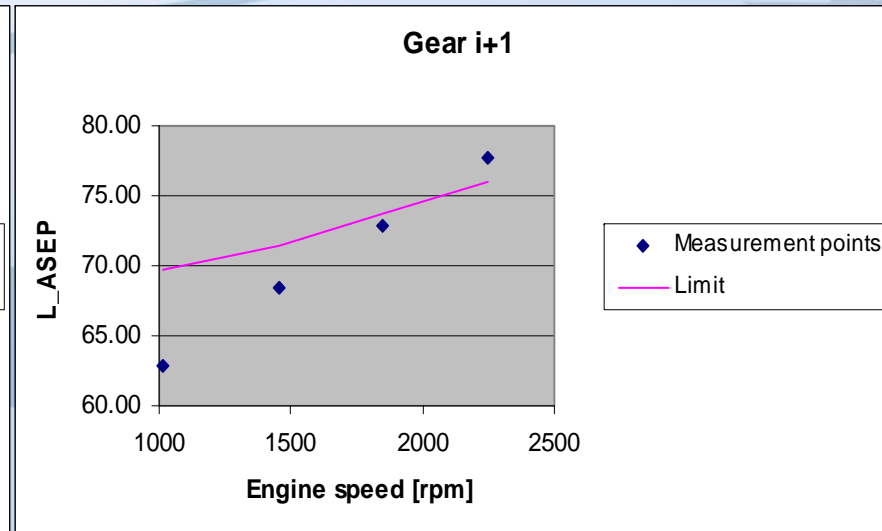
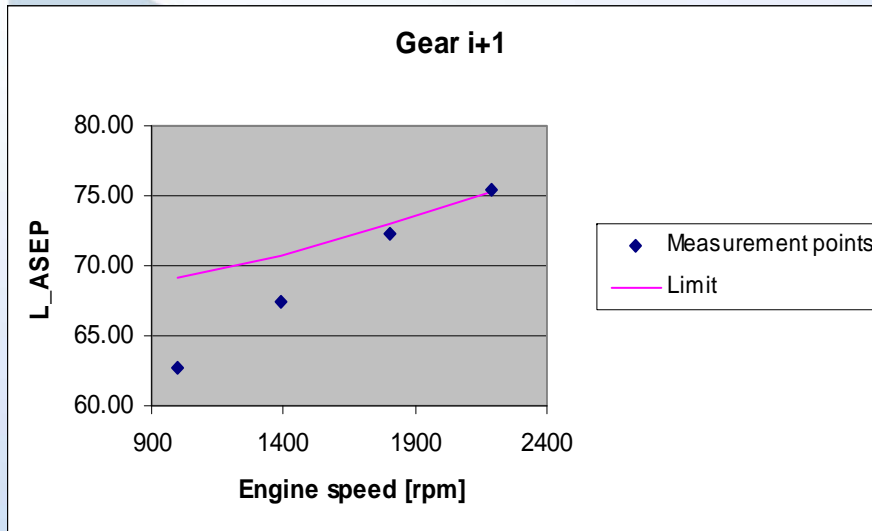
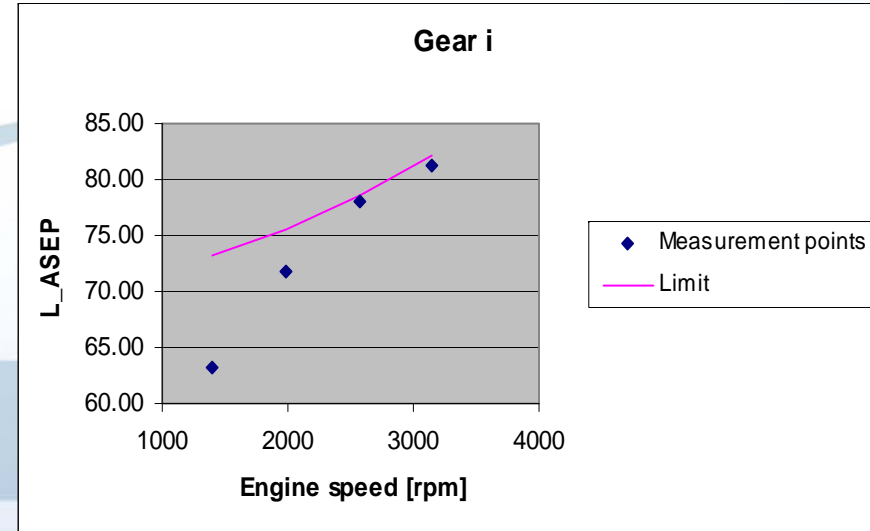
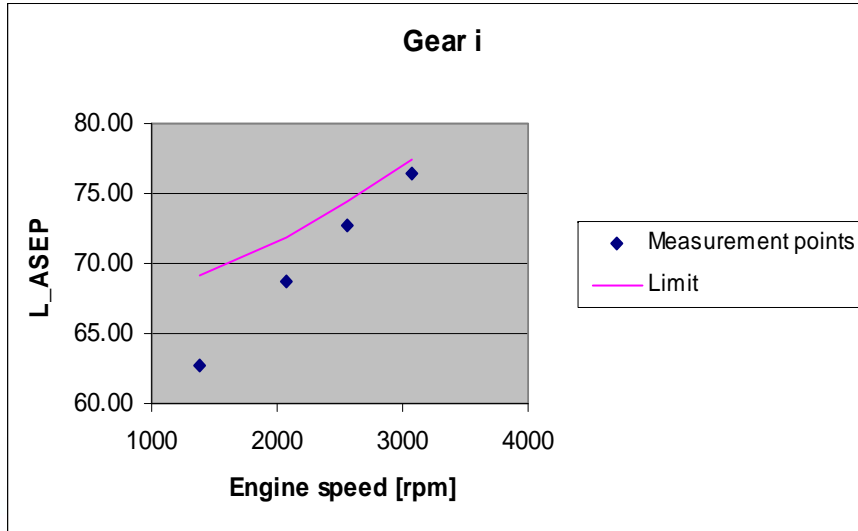
<b>i</b>	<b>OE</b>	<b>Repl.</b>
P1	-7.0	-6.1
P2	-1.1	-0.9
P3	0.7	0.1
P4	2.2	1.5
<b>i+1</b>		
P1	-6,7	-6.3
P2	-1.7	-1.9
P3	-0.4	-1.3
P4	0.1	-1.0



# ASEP: Vehicle D

## OE

## Replacement

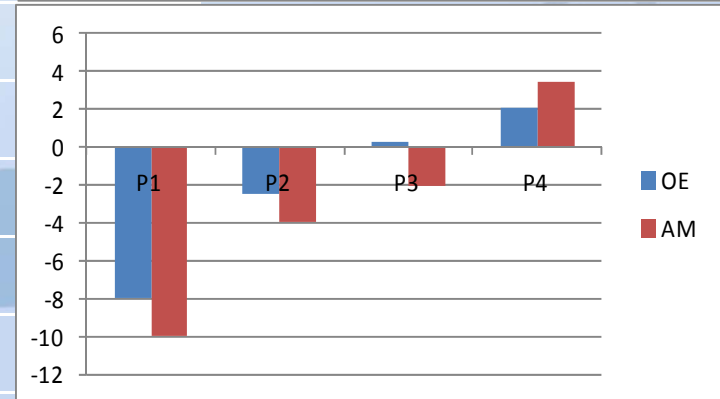
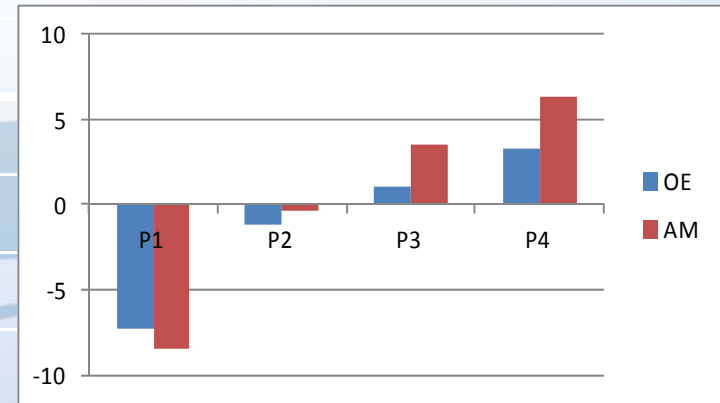




# ASEP: Vehicle D

Alternative calculation L\_Urban\_ASEP according to paragraph 6.2 (Requirement  $\leq 3.0$ )

<b>i</b>	<b>OE</b>	<b>Repl.</b>
P1	-7.3	-8.5
P2	-1.2	-0.4
P3	1.0	3.5
P4	3.3	6.3
<b>i+1</b>		
P1	-8.0	-10
P2	-2.5	-3.9
P3	0.3	-2.0
P4	2.1	3.4





**CLEPA**  
*European Association of  
Automotive Suppliers*

**THANK YOU**

**CLEPA**

Boulevard Brand Whitlock, 87

B - 1200 BRUSSELS

Phone: +32 2 743 91 31

Fax: +32 2 732 00 55

E-mail: [techsec@clepa.be](mailto:techsec@clepa.be)

Web: [www.clepa.be](http://www.clepa.be)