



**Economic and Social
Council**

Distr.
GENERAL

ECE/TRANS/WP.29/1080
14 December 2009

ENGLISH
Original: ENGLISH AND FRENCH

ECONOMIC COMMISSION FOR EUROPE

INLAND TRANSPORT COMMITTEE

World Forum for Harmonization of Vehicle Regulations

1958 AGREEMENT

Amendments to Annex 3 Part 7 of Regulation No. 48
(Installation of lighting and light-signalling devices)

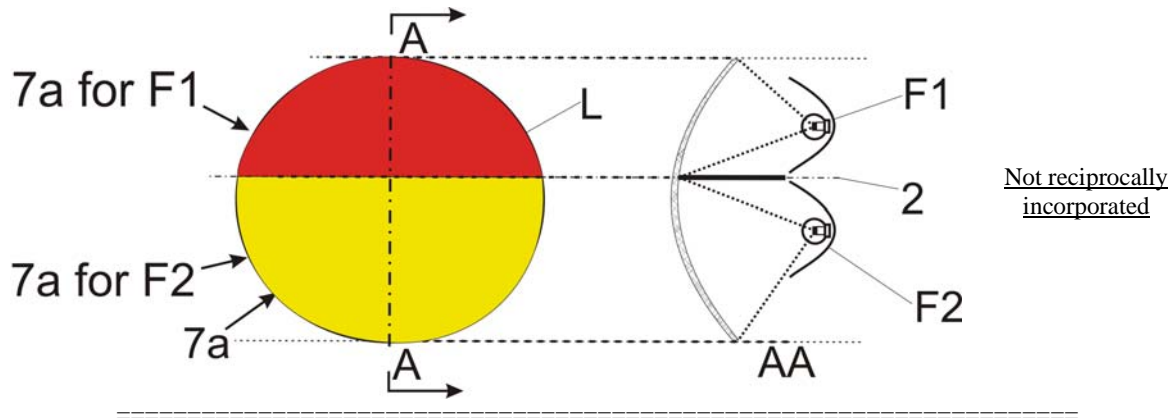
Note by the secretariat

This document contains amendments to Annex 3, Part 7 to Regulation No. 48 adopted by the Administrative Committee of the 1958 Agreement at its forty-third session (11 November 2009) following the recommendations of the World Forum at its 149th session (10-13 November 2009) (ECE/TRANS/WP.29/1079, paras. 55 and 89). It modifies ECE/TRANS/WP.29/2009/91, Annex 3. In accordance to the provisions of Article 12 of the 1958 Agreement the amended proposal shall be transmitted to the Secretary-General for its legal adoption.

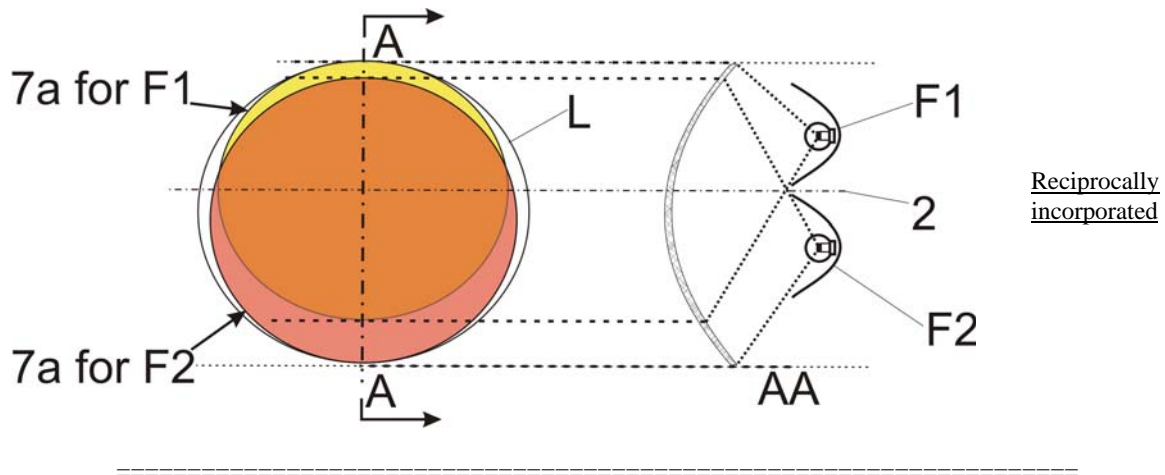
Annex 3, Part 7, amend to read:

"PART 7 EXAMPLES TO ENABLE A DECISION REGARDING THE RECIPROCAL INCORPORATION OF TWO FUNCTIONS

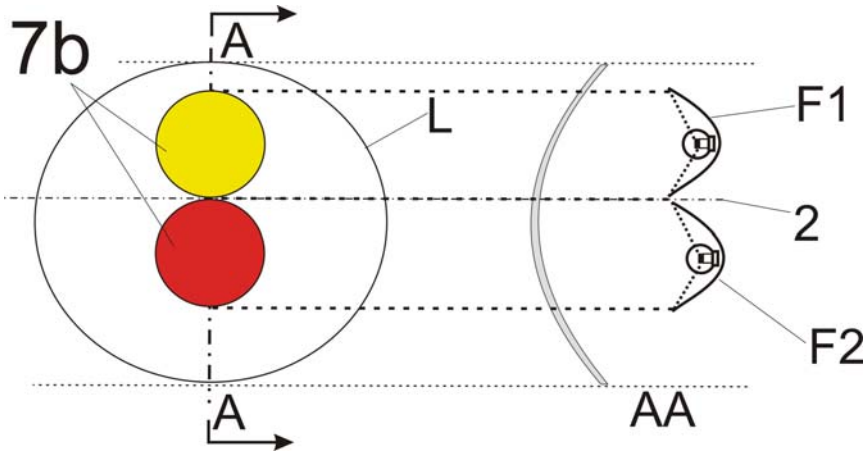
In the case with a textured outer lens and a wall in between:



In the case with a textured outer lens:

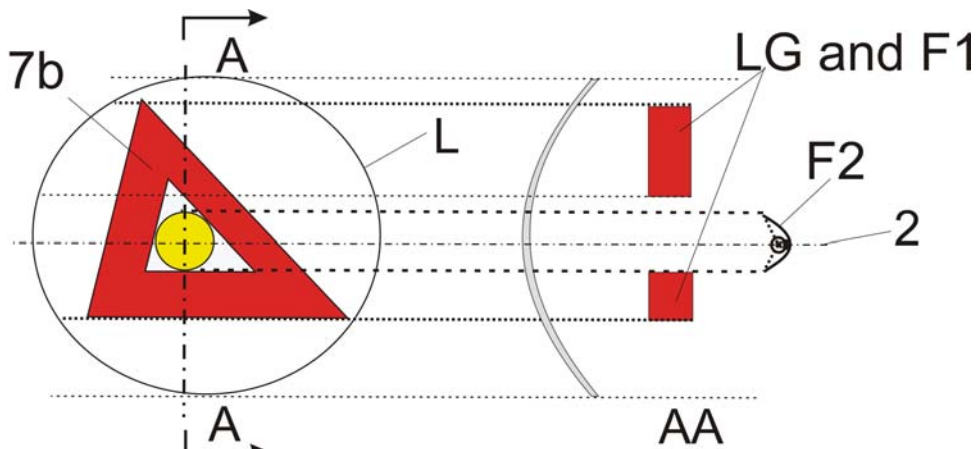


In the case where the non-textured outer lens is excluded:

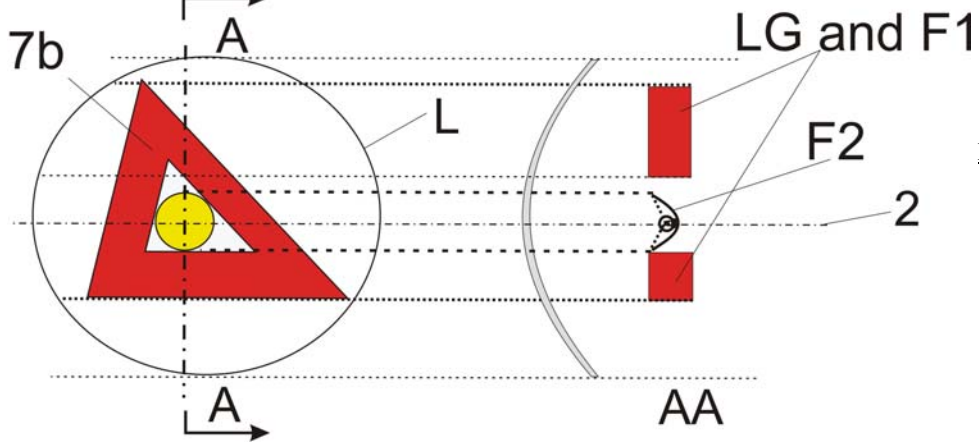


Not reciprocally
incorporated

In the case where the non-textured outer lens is excluded:

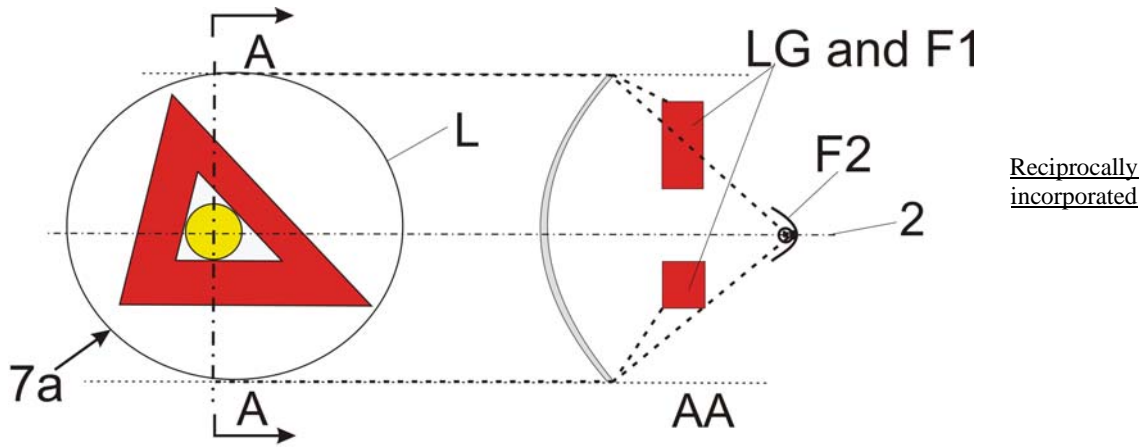


Not reciprocally
incorporated

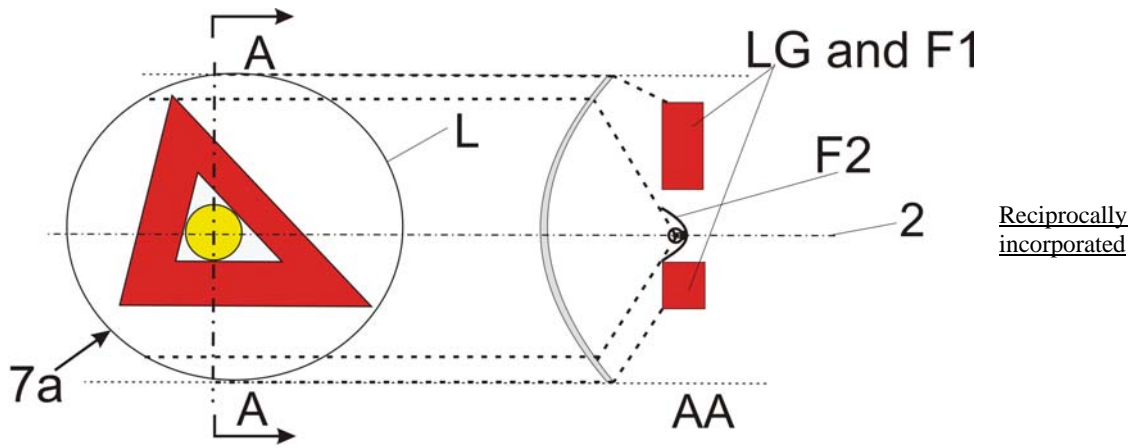


Not reciprocally
incorporated

In the case where the outer lens (textured or not) is included:

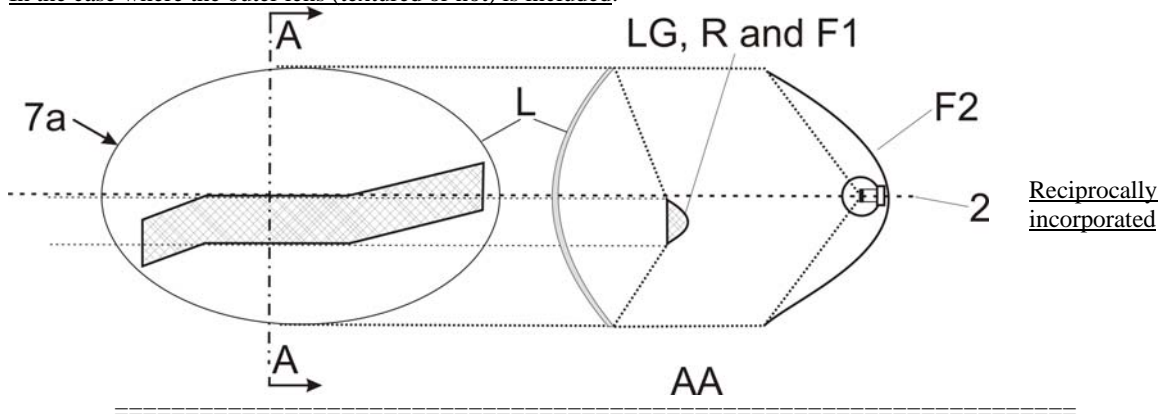


Reciprocally
incorporated



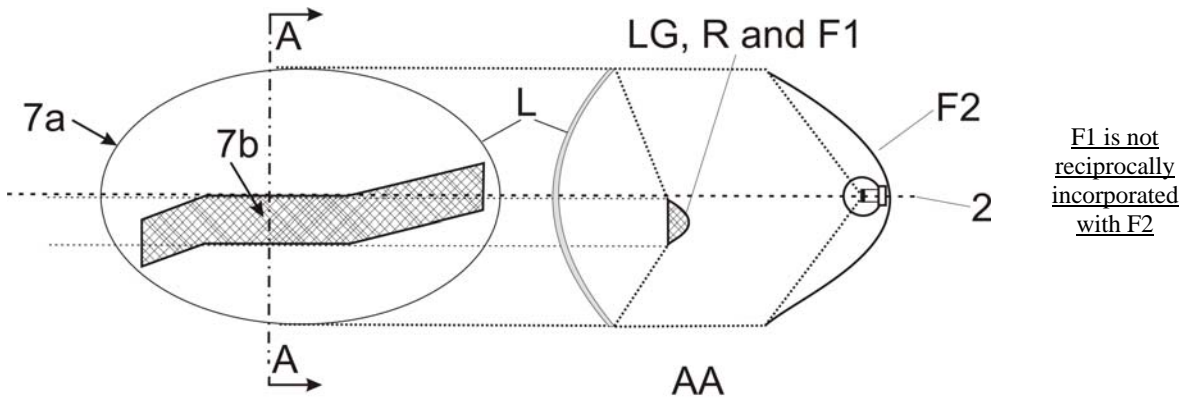
Reciprocally
incorporated

In the case where the outer lens (textured or not) is included:



Reciprocally
incorporated

In the case where the non-textured outer lens is excluded, "7b" is the apparent surface according to paragraph 2.8 and F1 shall not be transparent to F2:



In the case where the non-textured outer lens is excluded or not:

