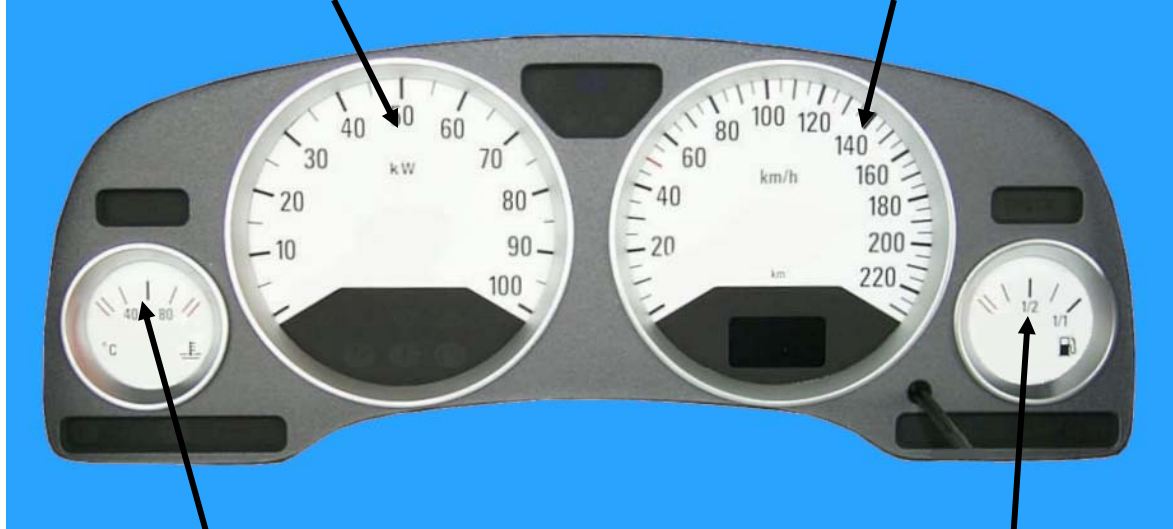


Fuel Cell Stack electrical power in kW (was engine speed)

Vehicle speed (not modified)



Stack Temperature in °C (range has been adapted)

Tank Level in % (not modified)



Isolation Resistance Failure



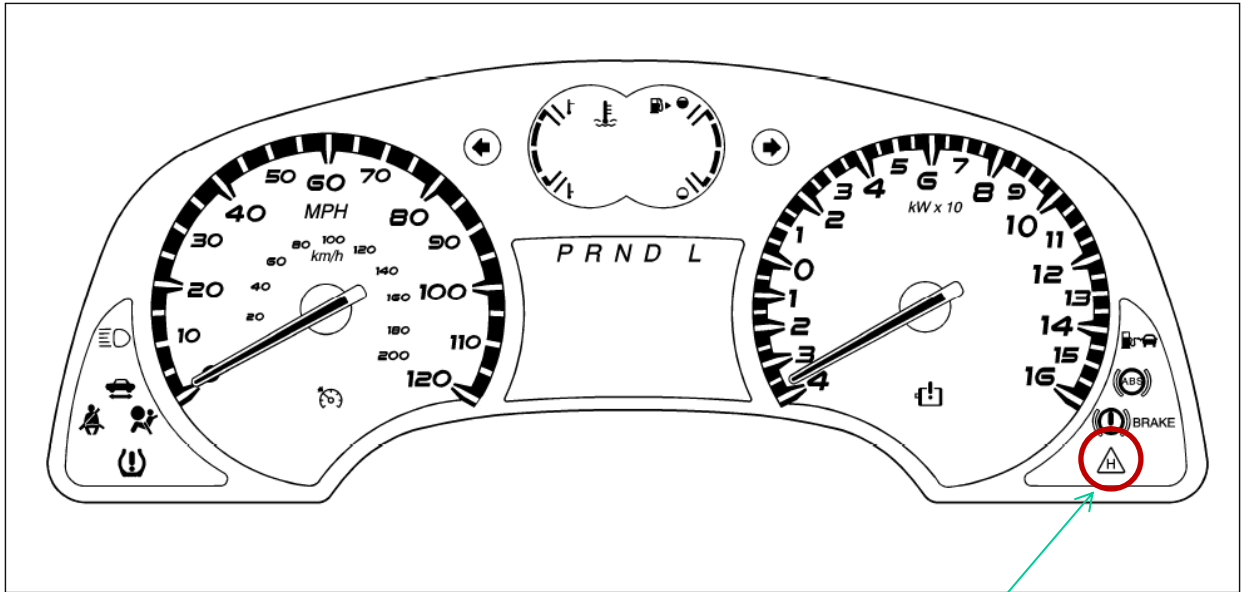
Hydrogen Concentration High



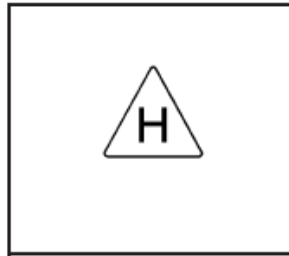
Refueling mode

Each LED indicates one sensor alarm (H2, overpressure, ...)



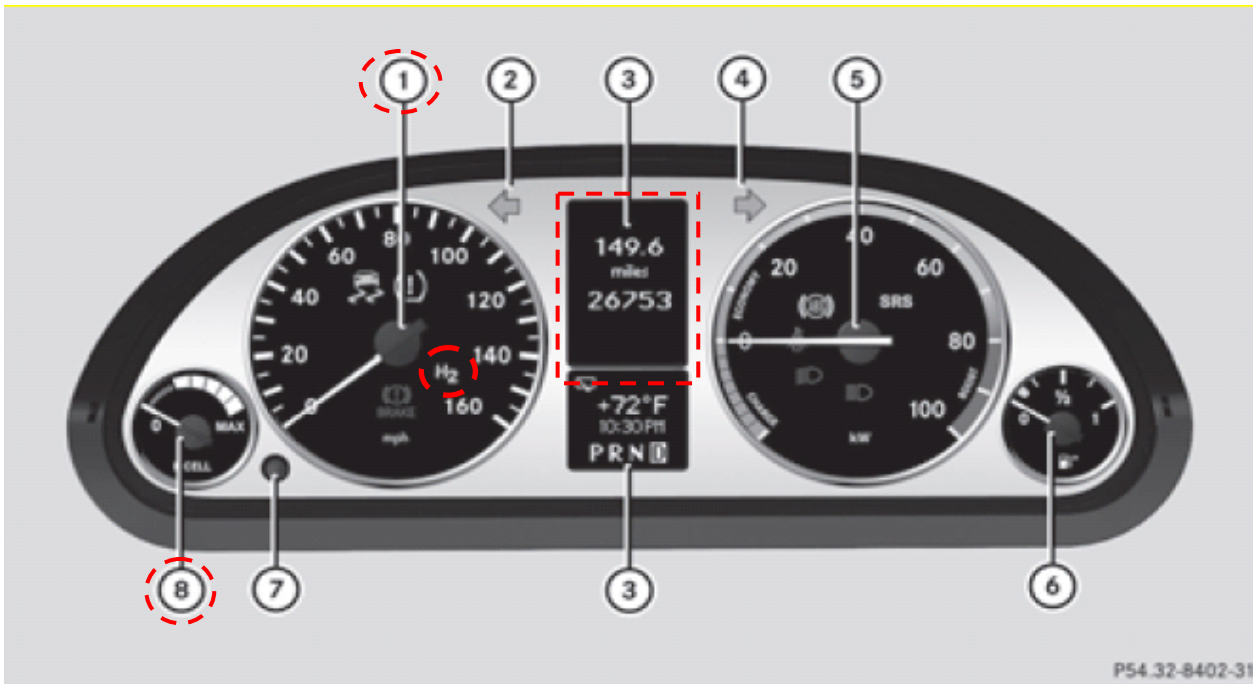


Hydrogen Warning Light



The hydrogen warning light, located on the right side of the instrument panel, comes on if a hydrogen leak is detected by sensors in the propulsion system or passenger compartments, or the underside of the vehicle.

Instrument cluster



P54.32-8402-31

	Function
①	Speedometer with: ESC warning lamp Combination low tire pressure/TPMS malfunction telltale Hydrogen (H ₂) alarm and fuel tank system warning lamp Brake warning lamp
②	Left turn signal indicator lamp
③	Multifunction display with: Trip odometer Main odometer Rear window wiper indicator Outside temperature indicator or digital speedometer (depending on selected setting in the control system)

	Function
	Digital clock Transmission position indicator
④	Right turn signal indicator lamp
⑤	Power gauge with: Low-beam headlamp indicator lamp Seat belt telltale Antilock Brake System (ABS) indicator lamp Supplemental Restraint System (SRS) indicator lamp High-beam headlamp indicator lamp
⑥	Fuel gauge with:

	Function
	Fuel tank reserve warning lamp (the arrow indicates that the fuel filler flap is on the right-hand side)
⑦	Reset button for: Resetting individual settings Resetting trip odometer Adjusting instrument cluster illumination
⑧	F-CELL gauge

Isolation Resistance Failure

Hydrogen Concentration High

Symbol messages	
Display messages	
	Stop, turn engine off
	Stop, turn engine off