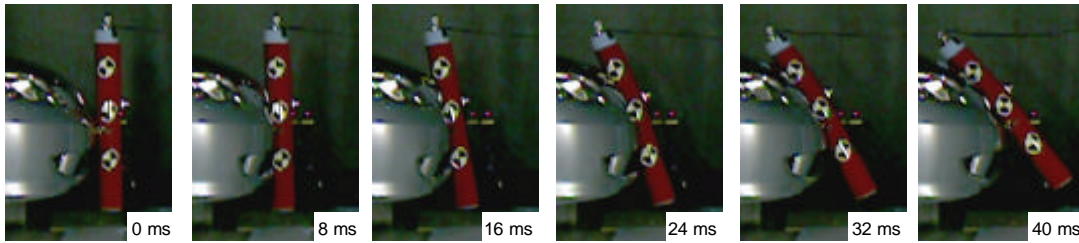


Retry Test Result for TRL-LFI

Atsuhiko Konosu
Flex-TEG Chairperson /Japan

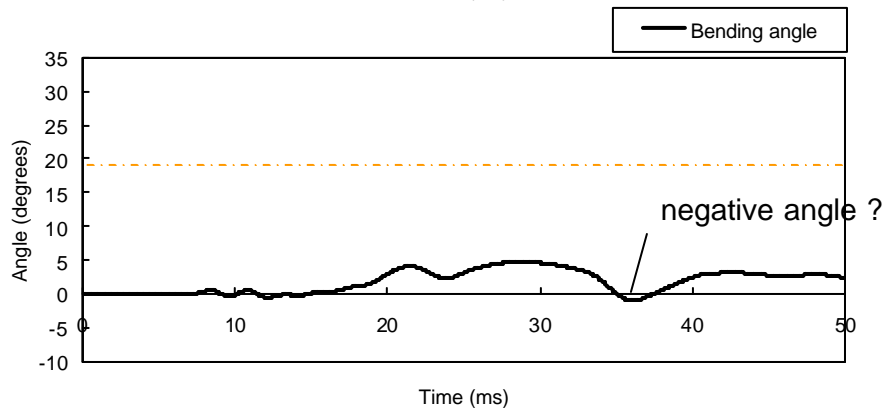
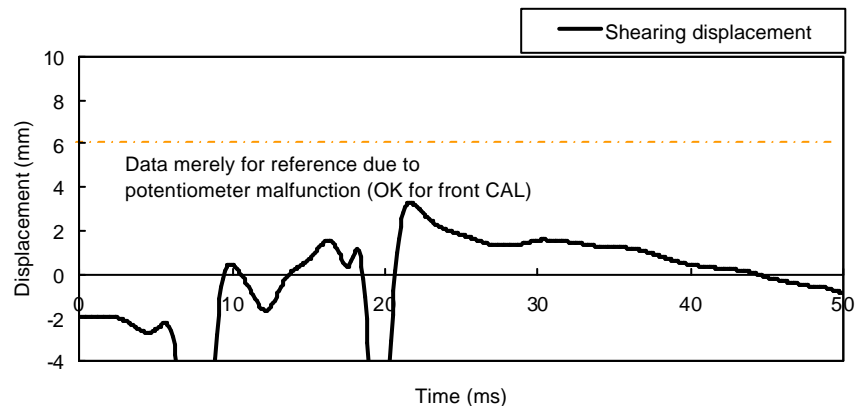
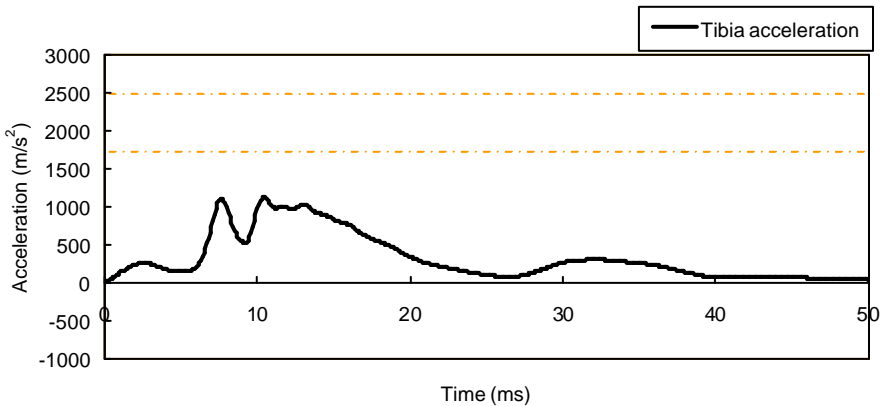
Measure-2 Vehicle → TRL-LFI (TEG-015)

Attempted improvement



----- :GTR tentative acceptance level

| : Initial injury detected timing (based on the GTR tentative acceptance level)

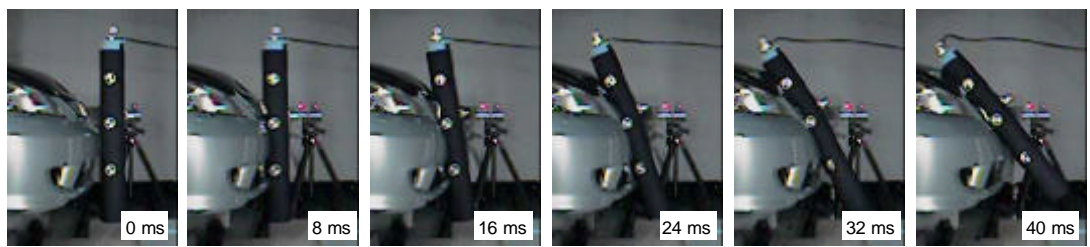


- In the above TRL-LFI test (TEG-015, Page 10), reliable test data could not be obtained.
- Retry test is therefore conducted.

Measure-2 Vehicle → TRL-LFI (Retry Test)

Attempted improvement

In this retry test, reliable test data is obtained.



----- : GTR tentative acceptance level | : Initial injury detected timing (based on the GTR tentative acceptance level)

