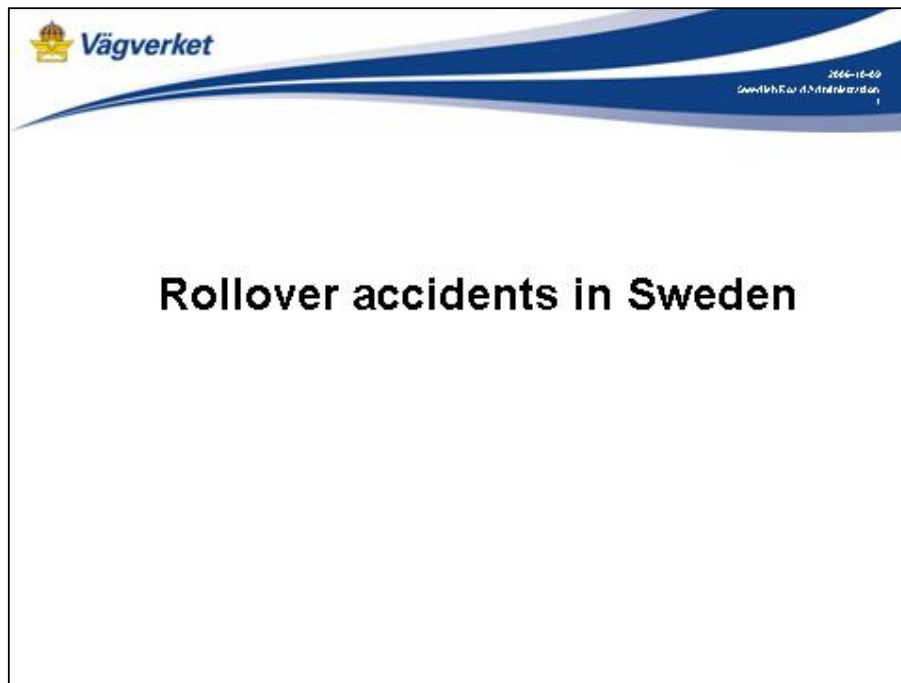


Transmitted by the expert from Sweden

Informal document No. **GRSG-91-20**  
(91<sup>st</sup> GRSG, 17-20 October 2006  
agenda item 1.2.5.)

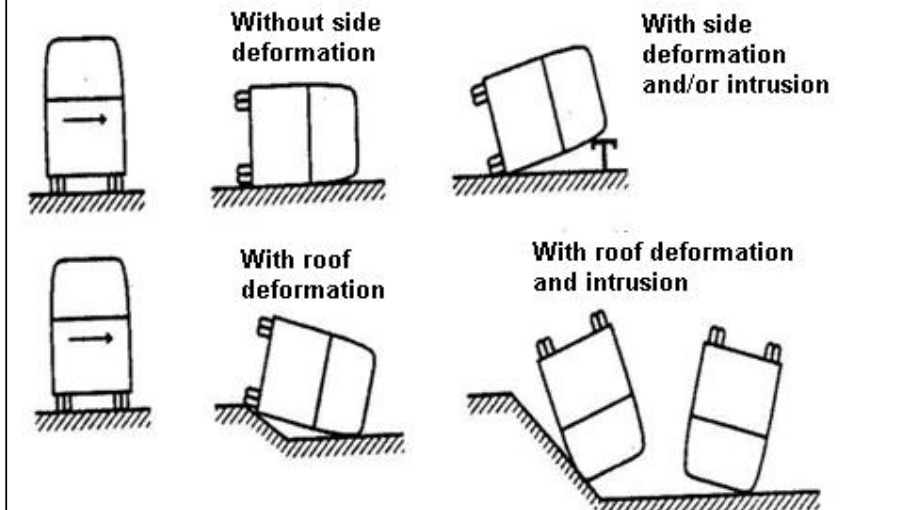
### **Rollover accidents in Sweden**


Note: The text reproduced below was prepared by the expert from Sweden in order to inform GRSG about the rollover accidents in which the side windows were broken.



## Different types of rollover crashes

Rollover to the right side is most the common



 2006-10-09  
SveVehFor 4.5 trafikskador

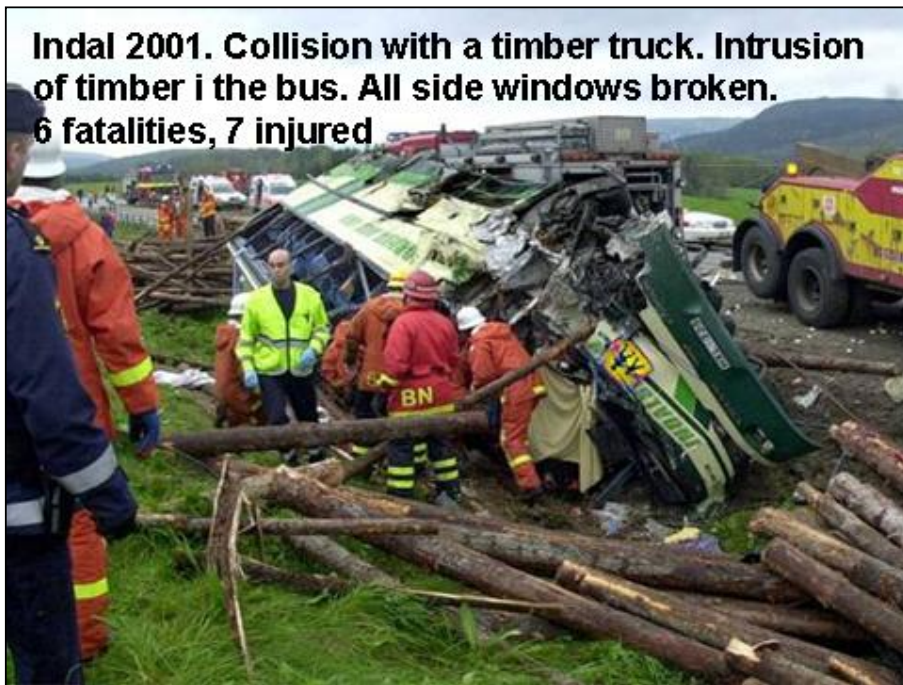
### Severe bus and coach accidents in Sweden

All are rollover accidents

Year	Rollover	Collision	Windows broken	Fatalities	Injured
1998	90°		X		42
2001	90°				34
2001	90°	X	X	6	7
2002	450°	X	X	2	15
2002	90°		X	1	44
2003	90°		X	6	43
2005	180°		X	9	41



Granån 2001. Deformation mainly in the front.  
Windows in the front and rear are broken.  
34 injured.



**Indal 2001. Collision with a timber truck. Intrusion  
of timber i the bus. All side windows broken.  
6 fatalities, 7 injured**



Råneå 2002. Rollover 450°. Side windows broken.  
2 fatalities, 15 injured.



**Mantorp 2002. No deformation of the vehicle structure. All side windows broken.  
1 fatality, 44 injured.**



 **Vägverket**

2006-10-09  
SvV19/Eu 47/Andersson 9

**Not all rollover accidents are severe**



**Uppsala 2005. School bus. Only some slightly injured passengers.**