



# Monitoring of the **I**mplementation of the **D**igital **T**achograph

## **MIDT** Project



# Scope of the Project



## **Four Work Packages**

- Help Desk
- Communication and Training Actions
- Support to the new Member States
- Support to the UNO-AETR Secretariat and to the AETR countries

## ***Fora* for Member States**

- Plenary
- Enforcement Committee
- Implementation Policy Committee
- Card Issuing & Networking Committee
- TACHOnet User Group
- Risk Assessment Group



# Help Desk



## Some key points:

Located in Brussels

Composed of 5 permanent MIDT team members

Use different external experts depending on the requests to be faced

Is contractually bound to answer any questions within 3 working days

Work in English, French and German

Has set up and has to maintain a web site



## Permanent Team:

Marie-Christine BONNAMOUR

Project Manager

Isabelle DOCHY

Project Assistant

Thierry GRANTURCO

Legal adviser

Annie LALE

Technical experts coordinator

Mélanie STARCK

Secretariat



## External expertise:

Hired whenever necessary

Works in close cooperation with tachograph and vehicle manufacturers





## Questions to the help desk

The Help desk has to answer any questions asked by e-mail within 3 working days

Working days = Monday to Friday

9h00 to 18h00

365/365 days, Belgian bank holidays excluded

Calculated from D1, ABhCD to D4 ABhCD





## Questions to the help desk

Questions can be asked and answered in:

English

French

German

depending on the choice made by the interested persons



## Questions to the help desk

National help desks are invited whenever necessary to turn back to the MIDT Help Desk



Each question concerning the tachograph application has to be asked through the form available on the web site for us:

- To be accountable
- To be able to assess the difficulties encountered by the users/Member States authorities
- To issue statistics if required



## CONTACT DETAILS OF THE HELP DESK

Web site : [www.eu-digitaltachograph.org](http://www.eu-digitaltachograph.org)

E-mail address: [secretariat@eu-digitaltachograph.org](mailto:secretariat@eu-digitaltachograph.org)

Telephone: +32 (0)2 738 07 63

Fax: +32 (0)2 738 07 64



# Communication & Training Actions



## Communication: Website

General presentation of the key elements of the tachograph application

- Legislation
- Type approval
- Installation
- Activation
- Calibration
- Use of the equipment
- Cards and card issuing
- Downloading and data management
- Approval of workshops
- Repair/replacement
- Decommissioning
- Security
- Coexistence between analogue and digital tachographs



## Communication: Website

FAQ function

Contact points at national levels

Links to other web sites



## **Training Actions**

### **Assessment of the training packages to be supplied by private or public partners**

- Tachograph manufacturers
- Unions
- Member States authorities
- Training centres
- Etc...

### **Harmonisation of the messages to be provided to the end users**





## Training Actions

**So far, 12 training packages have been assessed**





# Support to the new Member States



## Objectives

**Helping the new EU Member States to implement Regulation (EC) n° 2135/98 as rapidly as possible**

1. Assessment of their needs
2. Supply of technical and/or legal expertise if required
3. Tailored to new Member States specific needs



# Support to the AETR Countries



## Objectives

**Helping the control authorities of AETR Contracting parties to face the digital tachograph and the AETR Contracting parties to introduce the digital tachograph by 2010**

Three informative workshops to be organised

Help desk

Specific documentation can be made available (in English – IDT deliverables)



# Organisation of the Project



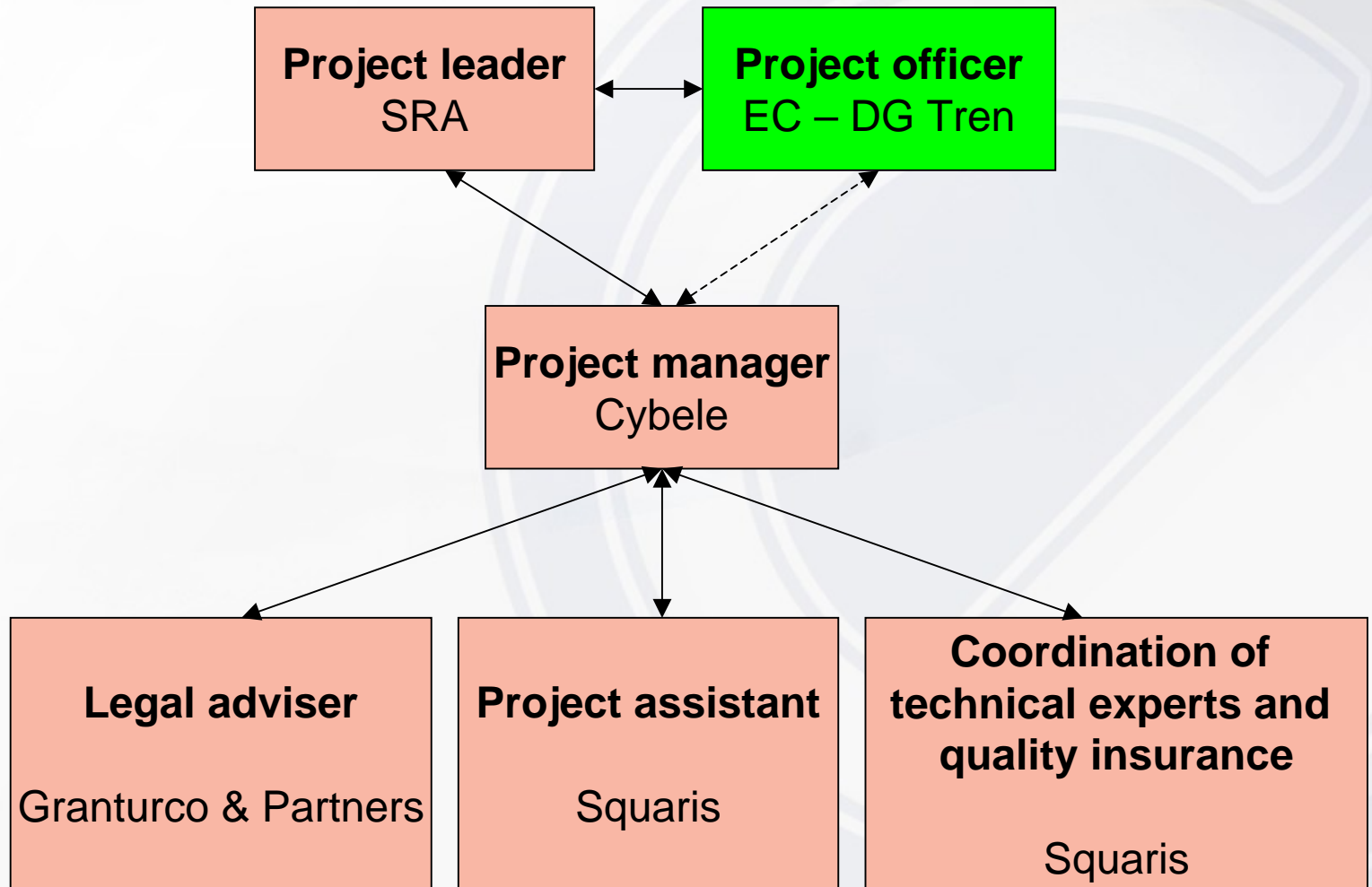
# Presentation of the MIDT Team

## Overview of the Project Organisation



# Presentation of the MIDT Team







# Project Leader



## Project Leader

### Per-Arne HOLM

Senior Tachograph adviser  
Swedish Road Administration

- Took part to the digital tachograph activities at both technical and political levels since the very beginning: 1997
- Former project leader of the IDT project
- Seats for Sweden in the different EU Committees in charge of tachograph issues
- Seats for Sweden at UNECE level for the AETR Agreement



# Project Manager



## Project Manager

**Marie-Christine BONNAMOUR**

Company Cybele

French

Former project manager of the Enforcement/3820 project : 1999 – 2001

Former project manager of the IDT project: 2002 – 2004

Overall responsibility of the project

Phd in European Law

Scientific collaborator at the European Studies Institute of the University of Brussels (ULB – VUB)

Head of Office of **CORTE** (C onfederation of O rganisations in R oad  
T ransport E nforcement)



# Legal Adviser



## Legal adviser

### Thierry GRANTURCO

GRANTURCO & Partners

French

- Legal adviser/project leader of the digital tachograph project : 1997 – 1999
- Legal adviser in the Enforcement/3820 project : 1999 – 2001
- Legal adviser/project leader in the CEECs/digital tachograph : 2000 – 2002 project
- Legal adviser in the IDT project : 2002 – 2004

Barrister at the Bar of Paris and at the Bar of Brussels

Phd in European Law

Phd in Political science

Phd in International relations

Secretary General of **CORTE** (**C**onfederation of **O**rganisations in **R**oad **T**ransport **E**nforcement)



# Coordination of Technical Experts and Quality Insurance





## Coordinator of Technical Experts & Quality Insurance

**Annie LALE**

Company Squaris

French

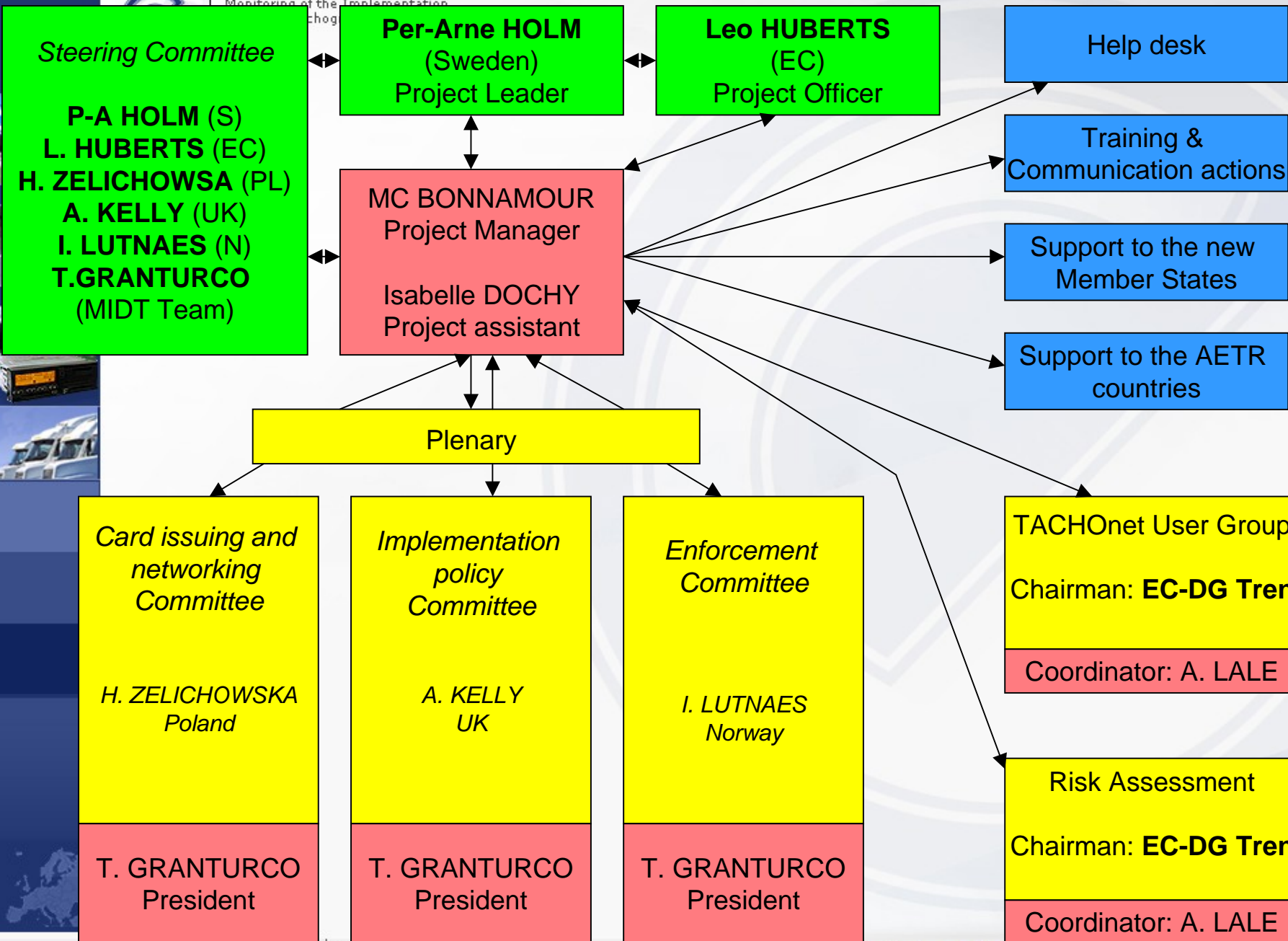
Coordination technical experts in the IDT project: 2002-2004

25 years professional experience in European affairs

Consortium partner in two projects to support the European Commission and ESA in promoting the EU initiative GMES (**G**lobal **M**onitoring for **E**nvironment and **S**ecurity) during the initial (2002-2004) and implementation periods (2004-2008)



# Overview of the Project Organisation





# Steering Group



## 1. Gathers:

- the project leader
- the project officer
- the chair people
- one MIDT team representative

2. Supposed to take strategic decisions, whenever necessary, on the organisation of the project, its objectives, etc...

3. Meets whenever necessary. Work mainly done by e-mail.



# How to Position the MIDT Project in the EU Scheme ?



**E  
U  
R  
O  
P  
E  
A  
N  
  
C  
O  
M  
M  
I  
S  
S  
I  
O  
N**

**Council of Ministers**

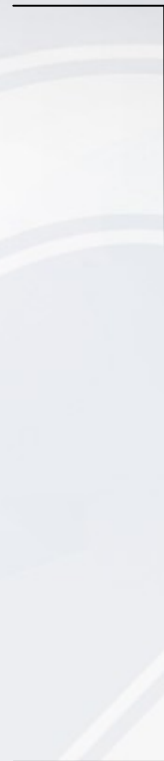
**COREPER 2**

**COREPER 1**

**Transport Working Group**

**Committee for Adaptation  
to Technical Progress  
CATP**

**MIDT project**



**Political  
decisions**



**Technical  
decisions**



**Preparation of  
political and  
technical  
decisions**





# QUESTIONS ?





# THANK YOU VERY MUCH FOR YOUR ATTENTION