



European Forest Week, Excursion 3

Mountain-Water-Forest-Landscape

Friday, 6. November 2015 (half day, starts 08.15 at the Brunni cable car station. Participants will be back in Engelberg before 12.00)

The excursion will be guided by Peter Lienert and Josef Hess

Please check recommendations for clothing and bad weather below – it is possible that in November there is already snow. Lunch packets will be offered.

Settlement areas in the mountains, for example here in Engelberg, have expanded drastically in recent years, mobility has increased, and the utilization of the habitat has intensified. Accordingly, the reliance on forest functions, namely the protective function of the forest has greatly increased.

Schedule

08.15	Meeting point at the base station of Brunni mountain cable car: introduction and orientation for the excursion	①
08.30	Ride with the Brunni mountain cable car to Ristis and with the chair lift to Brunni	②
09.00	Hike to the Brunni Swiss Alpine Club hut – Rosenbold	③
09.30	Discussion of the topic of the excursion	
10.50 – 11.00	Hike from Rosenbold to Ristis, lunch packet	④
11.15	Return with the cable car from Ristis to Engelberg	
12.01	Departure with the train from Engelberg in direction Lucerne	

Difficulty and appropriate clothing

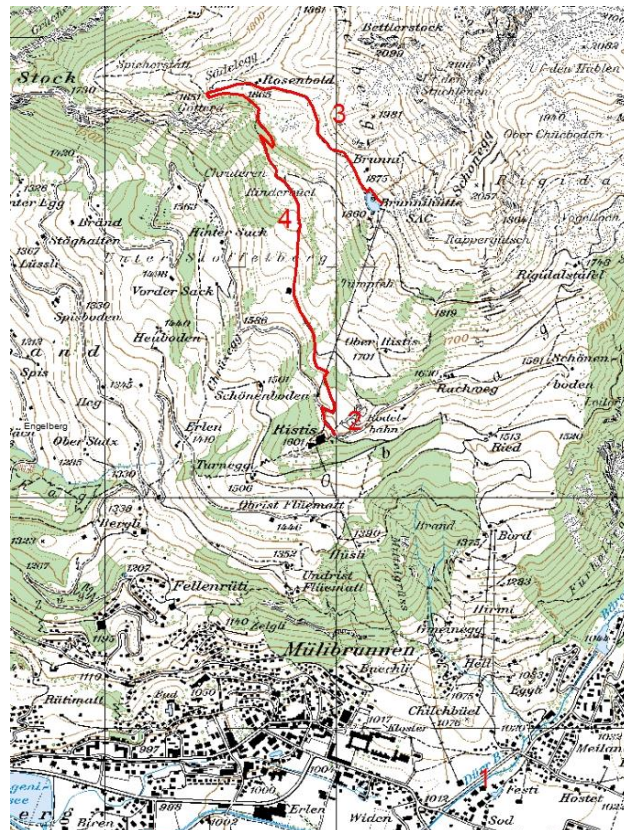
Participants should have rain gear and hiking shoes. The hike will include a 850 meter descent on a narrow path and cover a distance between 5 and 6 kilometers.

In case of poor weather

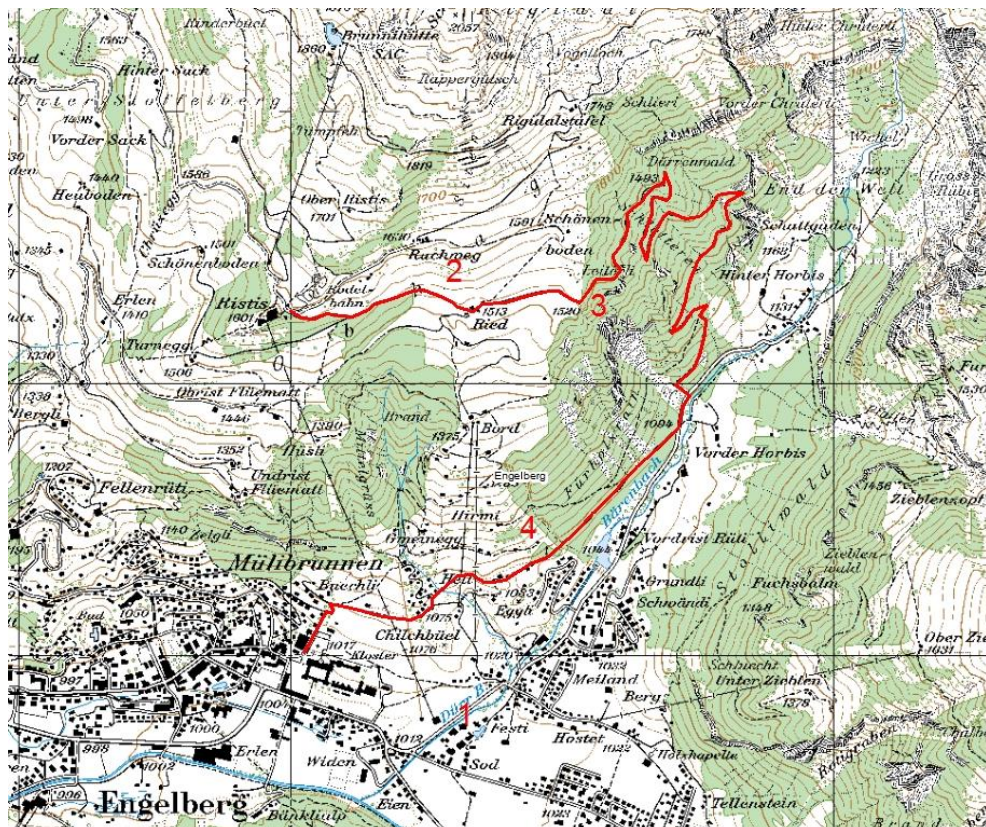
There is no specific rainy weather plan.

Two possible variants

There are two variants of this excursion (cf. maps on backside). Guides will decide on spot.



Variant 1



Variant 2