

CONFERENCE OF EUROPEAN STATISTICIANS

HIGH-LEVEL SEMINAR ON THE PROCESS-ORIENTED APPROACH TO STATISTICAL PRODUCTION

INFORMATION NOTICE No.2

I. VENUE AND PARTICIPATION

1. The Seminar will take place at:
The Plaza Hotel Seoul
Orchid Room, 4th floor
119 Sogong-Ro, Jung-Gu
Seoul, Republic of Korea 04525
2. The Plaza Hotel is located in the city centre. Please refer to the annex for further information on how to get to the venue.
3. The seminar is targeted to chief statisticians and senior managers of national statistical organisations and international organisations. Attendance is by invitation only.
4. All participants attending the seminar are requested to have a valid passport and, if required, a visa. A letter to facilitate obtaining a visa can be requested from the UNECE secretariat. Please refer to the annex for more information.
5. Participants should register online at <http://ow.ly/np3C304kDrT> by **17 February 2017**.

II. MEETING DOCUMENTS

6. The working language of the workshop is English. Simultaneous interpretation will be provided in Korean. All documents will be provided in English only. Presentations and papers for the workshop will be made available on the meeting web site at: <http://www.unece.org/index.php?id=43844#/>
7. Documents posted on the website before the workshop **will not** be distributed in the conference room. You are encouraged to save paper by reading documents on your electronic device where feasible.

III. ACCOMODATION AND TRANSPORT

8. Participants and/or their offices are requested to make their own travel arrangements and hotel reservations. The UNECE secretariat regrets not being able to offer any financial assistance regarding travel and accommodation arrangements. For more information about recommended hotels and logistics, please see the annex.

IV. FURTHER INFORMATION

9. For further information, please contact:

UNECE

Mr Steven Vale
Statistical Division, United Nations Economic Commission for Europe
Palais des Nations
1211 Geneva 10
Switzerland
Tel: +41 22 917 3285
Fax: +41 22 917 0040
email: steven.vale@unece.org

Ms Heini Salonen
Statistical Division, United Nations Economic Commission for Europe
Palais des Nations
1211 Geneva 10
Switzerland
Tel: +41 22 917 6081
Fax: +41 22 917 0040
email: heini.salonen@unece.org

STATISTICS KOREA

Mr Kido Seong
International Statistical Cooperation Division
Statistics Korea
Tel : +82 42 481 2095
email: ks7691@korea.kr

Ms Ohn Nu-Ri
International Statistical Cooperation Division
Statistics Korea
Tel : +82 42 481 2099
email: jasminne@korea.kr

Ms Park Yunsuk
International Statistical Cooperation Division
Statistics Korea
Tel : +82 42 481 2121
email: iamdeer79@korea.kr

1. VENUE

“High-level Seminar on the Process-oriented Approach to Statistical Production” will take place at:

The Plaza Hotel Seoul(Venue Hotel) Orchid Room (4th Floor)

ADDRESS : 119 SOGONG-RO, JUNG-GU, SEOUL, KOREA 04525

PHONE : 82.2.771.2200

FAX : 82.2.755.8897

<http://www.hoteltheplaza.com/eng/>



2. PASSPORT AND VISAS

Visa Requirement

Foreign nationals entering Korea are generally required to have a valid passport and a Korean visa. However, many are permitted visa-free entry for a limited time under certain conditions.

For the list of countries under the Visa Waiver Agreement and, if necessary, the visa application procedures, please go to: [Visa](#) (Please refer to Countries under visa exemption agreement on the webpage.)

For more details, visit the website of [the Ministry of Foreign Affairs of Korea](#).

(http://www.mofa.go.kr/ENG/visa/application/index.jsp?menu=m_40_10)

3. TRANSPORTATION

Participants are required to make their own transport arrangement to the hotels.

Participants have to buy the limousine tickets on their own. At the Incheon International Airport, guides are posted to give directions.

Incheon International Airport → The Plaza Hotel



(1) Airport Limousine Bus

	Kal Limousine Bus	Limousine Bus	
Bus No.	6701	6001	6015
Bus Stop	4A, 10B	5B, 11B	5B, 11B
Service Operation	04:50 – 22:53 (Operates every 30 mins.)	05:45 – 22:40 (Operates every 30 mins.)	05:35 – 22:50 (Operates every 10 mins.)
Travel Time	Approximately 70 mins.	Approximately 80 mins.	
Fare	KRW 16,000 (one-way, approx. USD 15)	KRW 15,000 (one-way, approx. USD 14)	KRW 15,000 (one-way, approx. USD 14)
Limousine Stop	Seoul City Hall Station	Seoul City Hall Station	

(2) Taxi

Alternatively, participants can take a regular or a deluxe (black sedan) taxi to the hotels. To take a taxi, please use the taxi stop in front of the passenger terminal (1F) between platform 4D and 8C.

Your destination is “The Plaza Hotel Seoul”.

Category	Travel Time	Fare (KRW)
Regular Taxi	80 mins.	Approx. KRW 70,000-80,000 (approx. USD 60-69)
Deluxe Taxi		Approx. KRW 90,000-100,000 (approx. USD 77-86)

* Individual responsibility.

* Duration time and taxi fare can vary depending on traffic conditions.

(3) Subway (Airport Railroad)

From Incheon International Airport (approximately 1 hour 40 mins):

1. Take the Korail Airport Railroad at Incheon International Airport Station.
2. Transfer to Line no. 5 at Gimpo Airport
3. Transfer to Line no. 2 at Chungjeongno Station
4. Get off at City Hall Station

4. ACCOMMODATION

All participants are responsible for making their own hotel reservation and other lodging arrangements. The recommended hotels accept payment by credit card.

We have 6 different hotels for “High-level Seminar on the Process-oriented Approach to Statistical Production”: **The Plaza Hotel (Venue)**, **The Westin Chosun Seoul**, **KOREANA HOTEL**(Sub-hotel), **HOTEL President**(Sub-hotel), **HOTEL SHINSHIN**(Sub-hotel), and **Lotte City Hotel Myeongdong** (Sub-hotel).

The Plaza Hotel Seoul(Venue Hotel)

119 Sogong-Ro, Jung-Gu, Seoul, Korea

<http://www.hoteltheplaza.com/eng/>

Tel : 82.2.771.2200

Fax : 82.2.755.8897



The Westin Chosun Seoul

106, Sogong-Ro, Jung-Gu, Seoul, Korea

www.echosunhotel.com

Tel.: +82-2-317-0302

Fax.: +82-2-777-4444

Email: rsvn@chosunhotel.co.kr / CC: un_sdgs@ioconvex.com



Room Type	Services Provided	Check-in/ Check-out
Business Deluxe	<ul style="list-style-type: none"> - Fitness club and swimming pool available for free - Nespresso Coffee Machine with 2 complimentary capsules of espresso blends per night - 500Mbps LAN connection(Charged) - Breakfast buffet(one person) 	<p>Check-in 15:00</p> <p>Check-out 12:00</p>

* **Breakfast for a single person is included**; however, personal expenses such as mini bar, telephone, etc. are not included.

* Breakfast buffet is available from 7:00 to 10:00 at Aria on the Lower Lobby of the hotel.

* All dates and times are based on Korean standard time (UTC +9).

KOREANA HOTEL(Sub Hotel)

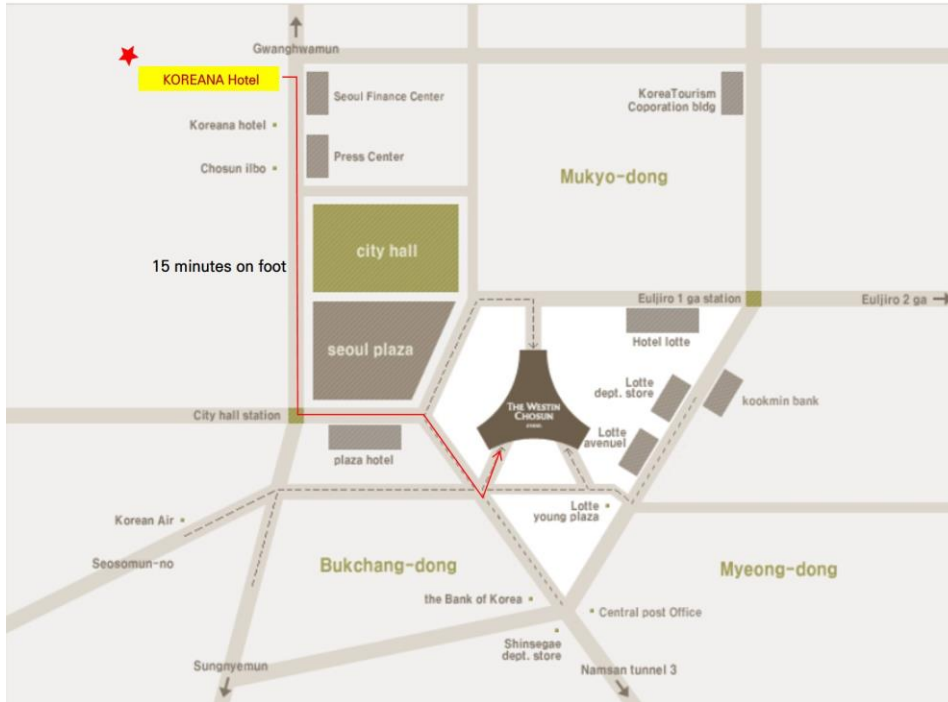
135, Sejong-daero, Jung-Gu, Seoul, Korea

www.koreanahotel.com/2013_home/en/main/index.asp

Tel.: +82-2-2171-7911

Fax.: +82-2-730-9025

Email: carivas@koreanahotel.com / **CC:** un_sdgs@ioconvex.com



Business Twin



Executive Queen



Executive King

Room Type	Services Provided	Check-in/ Check-out	Distance from the venue hotel
Business Twin	<ul style="list-style-type: none"> - Complimentary 1 bottle of Mineral water daily - Complimentary Internet service - Breakfast buffet(one person) 	Check-in 15:00 Check-out 12:00	15 minutes on foot
Executive Queen	<ul style="list-style-type: none"> - Complimentary 1 bottle of Mineral water daily - Complimentary Internet service - Executive Club Service - Breakfast Buffet or Continental Breakfast(one person) 	Check-in 15:00 Check-out 14:00	

Executive King	<ul style="list-style-type: none"> - Complimentary 1 bottle of Mineral water daily - Complimentary Internet service - Executive Club Service - Breakfast Buffet or Continental Breakfast(one person) 		
-----------------------	--	--	--

* **Breakfast for a single person is included**; however, personal expenses such as mini bar, telephone, etc. are not included.

* Breakfast buffet is available **from 7:00 to 10:00 at Danube on the 2nd floor** of the hotel, and Continental Breakfast is available **from 7:00 to 10:00 at Executive Club Lounge on the 21st floor** of the hotel

* All dates and times are based on Korean standard time (UTC +9).

HOTEL President(Sub Hotel)

16, Eulji-Ro, Jung-Gu, Seoul, Korea

www.hotelpresident.co.kr

Tel.: +82-2-753-3130

Fax.: +82-2-779-7111

Email: marketing@hotelpresident.co.kr / **CC:** un_sdgs@ioconvex.com



Room Type	Services Provided	Check-in/Check-out	Distance from the venue hotel
Standard Double	<ul style="list-style-type: none"> - Complimentary 1 bottle of water daily - Complimentary tea service - High-speed wired Internet access (complimentary) - Breakfast buffet(one person) 	<p>Check-in 14:00</p> <p>Check-out 12:00</p>	<p>5 minutes on foot</p>

* **Breakfast for a single person is included**; however, personal expenses such as mini bar, telephone, etc. are not included.

* Breakfast buffet is available **from 7:00 to 10:00 at Charmant on the 1st floor** of the hotel.

* All dates and times are based on Korean standard time (UTC +9).

HOTEL SHINSHIN(Sub Hotel)

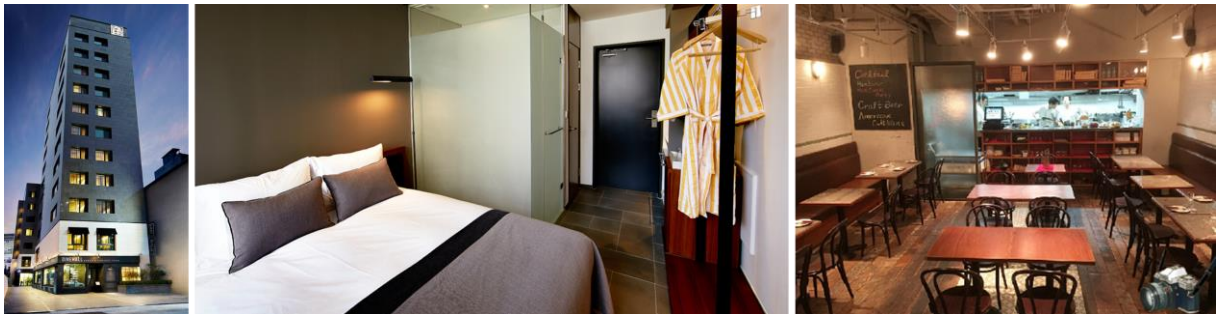
17-5, Namdaemun-Ro, 5-Gil, Jung-Gu, Seoul, Korea

hotel-shinshin.com

Tel.: +82-2-2139-1005

Fax.: +82-2-2139-1010

Email: rsvn@hotel-shinshin.com / CC: un_sdgs@ioconvex.com



Room Type	Services Provided	Check-in/ Check-out	Distance from the venue hotel
Standard Double (or Twin)	<ul style="list-style-type: none"> - High-speed internet access (complimentary) - Satellite flat screen TV - Bathrobe, slippers and hair dryer - Breakfast(one person) 	<p style="text-align: center;">Check-in 15:00</p> <p style="text-align: center;">Check-out 12:00</p>	5 minutes on foot

* **Breakfast for a single person is included**; however, personal expenses such as mini bar, telephone, etc. are not included.

* Breakfast is available **from 7:00 to 10:00 at DINEHALL on the 1st floor** of the hotel.

* All dates and times are based on Korean standard time (UTC +9).

Lotte City Hotel Myeongdong(Sub Hotel)

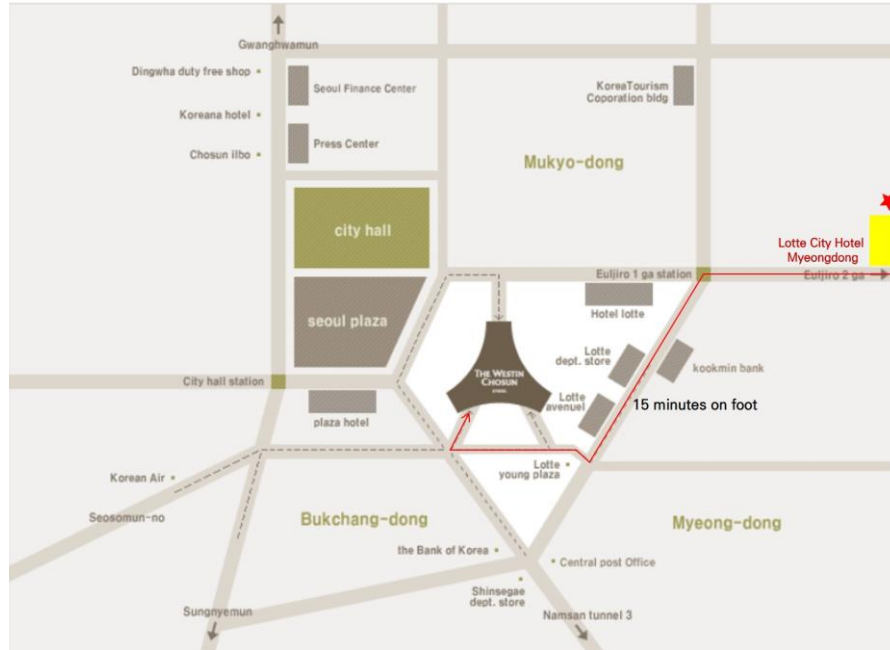
362, Samil-daero, Jung-gu, Seoul, Korea

www.lottehotel.com/city/myeongdong/en/

Tel.: +82-2-6112-1000

Fax.: +82-2-6112-1004

Email: lds20002@lotte.net / **CC:** un_sdgs@ioconvex.com



Room Type	Services Provided	Check-in/ Check-out	Distance from the venue hotel
Standard Double (or Twin)	<ul style="list-style-type: none"> - Complimentary 2 bottles of water daily - Complimentary tea service - Free high-speed internet access - Free fitness center & business corner - Breakfast buffet(one person) 	<p style="text-align: center;">Check-in 14:00</p> <p style="text-align: center;">Check-out 12:00</p>	15 minutes on foot

5. GENERAL INFORMATION

Climate

Korea has four seasons, with a wet monsoon/summer season in the middle of the year, and a cold winter from November to March. In April, it is spring and the average temperature in Seoul is +13°C (55.4°F). Please check the Korea Meteorological Administration website for the latest weather forecast. (<http://web.kma.go.kr/eng/index.jsp>)

Currency

The won (KRW) is the official currency of Korea. Banknotes are denominated in 1,000 won, 5,000 won, 10,000 won, and 50,000 won, and coins in 10 won, 50 won, 100 won, and 500 won. The major currencies as well as traveler's checks drawn on major banks can be easily converted into Korean won at the airport or local banks. As of 1 February 2017, the exchange rate is as follows:

USD1 = 1,155 KRW (Source: <http://www.xe.com/currency/krw-south-korean-won>)

Time Zone

Korea's time zone is 9 hours ahead of Greenwich Mean Time. "GMT + 9:00" (Standard Time)

Credit Card

Foreign credit cards with VISA, Master Card, American Express, Diners Club, and JCB are accepted in most places. They can also be used for cash advances at local ATMs.

Electrical Plug and Outlet

The supply voltage in Korea is 220 volts.

Country and City Dialing Codes

International country code for Korea: +82

Regional area code for Seoul: 02

Emergency Calls

For medical emergency, press 119. Press 112 for other emergencies.

Tourist Information

For tourist information, please visit <http://english.visitkorea.or.kr/enu/index.kto>

Value-Added Tax

The price of most goods and services include the 10 percent value-added tax, but some hotels, restaurants, and stores charge the 10 percent VAT separately. For Information on tax refund, please visit http://www.visitkorea.or.kr/enu/SH/SH_EN_7_1_4.jsp

6. CULTURAL EXCURSION

1/ Gyeongbokgung Palace



Gyeongbokgung Palace was the first royal palace built by the Joseon Dynasty, three years after the Joseon Dynasty was founded. The Palace was named Gyeongbokgung Palace, the "Palace Greatly Blessed by Heaven." Built in 1395, Gyeongbokgung Palace was located at the heart of newly appointed capital of Seoul (then known as Hanyang) and represented the sovereignty of the Joseon Dynasty. Among the largest of the Five Grand Palaces (the others being Gyeonghuigung Palace, Deoksugung Palace, Changgyeonggung Palace, Changdeokgung Palace), Gyeongbokgung served as the main palace of the Joseon Dynasty. An effort by the Korean government has been ongoing since 1990 to rebuild and restore the buildings that were destroyed during the Japanese occupation. This 40-year restoration project aims to fully restore Gyeongbokgung Palace to its original form in the next twenty years. The palace also houses the National Palace Museum of Korea and the National Folk Museum of Korea.

2/ Insa-dong



Insa-dong is for visitors who want to experience traditional aspects of Korea. The area is especially popular for antiques, old paintings, ceramics, paper crafts and traditional furniture. The main street of Insa-dong is vehicle-free and vendors are set up along the streets with people peddling their antiques, accessories and artworks.

Ssamzigil

Ssamzigil is a unique shopping mall like space with over 70 shops selling traditional handicrafts, accessories, stationary, modern interior decorative pieces and more. You can see young artisans making items and purchase on the spot.

7. TOUR INFORMATION

Seoul (the Capital of Korea)

The word "Seoul" means capital in traditional Korean. The city contains both history and tradition, as well as the latest IT technology, making it quite rare anywhere on the globe.

► Changdeokgung (Palace)

Changdeokgung Palace is listed as a UNESCO World Heritage site for its historical significance, simplicity and subtleness. The palace was the second royal villa built following the construction of Gyeongbukgung Palace in 1405. It was the principal palace for many kings of the Joseon Dynasty, and is the most well-preserved of the five remaining royal Joseon palaces. The palace grounds are comprised of a public palace area, a royal family residence building, and the rear garden. Known as a place of rest for the kings, the rear garden boasts a gigantic tree that is over 300 years old, a small pond and a pavilion.

► National Museum of Korea

The perfect place to get an overview of Korean history, art and culture. NMK (not to be confused with the National Palace Museum) features an incredible range of exhibits, from Goryeo Dynasty celadons and paintings from the Joseon Dynasty, to contemporary artwork and photography. Check the program guide of current exhibits, which often includes exhibits on loan from other famous museums. There is also a popular Children's Museum. NMK was recently voted one of the top ten most visited museums in the world. Closed on Mondays.

► N Seoul Tower

Opened in 1980 and situated in the heart of the capital atop Namsan Mountain, N Seoul Tower has become one of the city's most popular (and prominent) landmarks. Rising almost 500 m above the city, it affords magnificent panoramic views. The top features a revolving restaurant.

► Namsangol Hanok Village

A traditional Korean village sandwiched between modern skyscrapers, it comprises several old traditional Korean houses and a pavilion with a pond that have been painstakingly and lovingly restored. Cultural performances are held here regularly. Closed on Tuesdays.

► Samcheongdong-gil

This is one walking tour not to be missed: a circuit that starts at Gyeongbokgung Palace and winds its way through an older, laid-back, more colorful and bohemian part of the city. The street is lined with numerous art galleries, quaint shops and restaurants, as well as the occasional temple (and other surprises!) for a real 'neighborhood' exploration in the heart of the Big City.

► Lotte World

Part theme park, part entertainment mecca, part folk museum, part international cuisine smorgasbord, Lotte World truly has it all. From thrilling rides at Adventureland and Magic Island, to an ice rink, laser shows, parades, and much more. Feel what it's like to be inside a tornado. Ride the Gyro Drop and Gyro Swing (if you dare!). It's easily an all-day - and into the night - blast.

Others

Han Style: Han Style refers to the source of Korean culture representing and symbolizing Korea, and the branding of Korean traditional cultures including Hangeul, Hansik, Hanbok, Hanok, Hanji and Hanguk-eumak which can be commercialized, globalized, and used in everyday life.



Hangeul: The Korean alphabet, a very scientific writing system that has been designated by UNESCO as an important part of the Memory of the World Heritage. As a result of the Korean Wave and Korea's economic prosperity, the desire to learn Hangeul and the Korean language is exploding.

Hansik: Korean food continues to gain popularity throughout the world for its incredible health benefits.

Hanbok: The focus of attention when Daejanggeum (Jewel in the Palace), a TV drama on royal court cuisine, became popular in Asia. Modifications of the exquisite colors and designs of the Hanbok are also used as motifs in all Korean-style designs.

Hanok: Many international visitors are showing interest in the traditional Korean home, Hanokas they want to experience Ondol, the Korean floor heating system very effective in the cold winter. Ondol is an important aspect of Korea's unique architectural style, and brought floor heating into vogue globally.

Hanji: A traditional form of paper that can last for over one thousand years and is known for its outstanding quality and elegant designs. The paper is drawing attention not only for record-keeping purposes but also for interior decoration and for its uses in paper wrapping.

Hangukeumak: Traditional Korean music that has slow-rhythm and sentimental lyrics that epitomize the sad history of Korea. Such unique Korean sentiments had significant influence on Korean popular music and drama and are an important driver of the Korean Wave