



**Economic and Social
Council**

Distr.
GENERAL

CES/2002/4
4 April 2002

ORIGINAL: ENGLISH

STATISTICAL COMMISSION and ECONOMIC COMMISSION FOR EUROPE

CONFERENCE OF EUROPEAN STATISTICIANS

Fiftieth plenary session
(Paris, 10-12 June 2002)

THE INTEGRATED PRESENTATION DATABASE

Note prepared by the Secretariat

Summary

1. Delegates are invited to note the developments that have taken place in the Integrated Presentation Database and to direct any comments, questions or requests they may have to the ECE Secretariat.

Background

2. At the CES held in June 2001, the ECE Secretariat undertook to send a circular letter to national statistical institutes in the ECE region asking countries their views on the Integrated Presentation (IP)(ref.: CES/2001/34 para. 22). In response, the Secretariat proposed to the Bureau some restructuring of the IP itself and the conversion of the IP into a database. These proposals were accepted by the Bureau and have formed the basis for the documents presented to this Plenary Session.

Objectives

3. The database has been developed in line with the new structure of the IP and taking account of the views of users, with the following main aims in mind:

- a. To facilitate access to the IP in a structured manner over the internet;
- b. To facilitate remote updating of the contents of the IP by authorised users;

- c. To facilitate the management and preparation of the IP within the Secretariat;
- d. To facilitate the production of papers on the IP for the Conference and the Bureau.

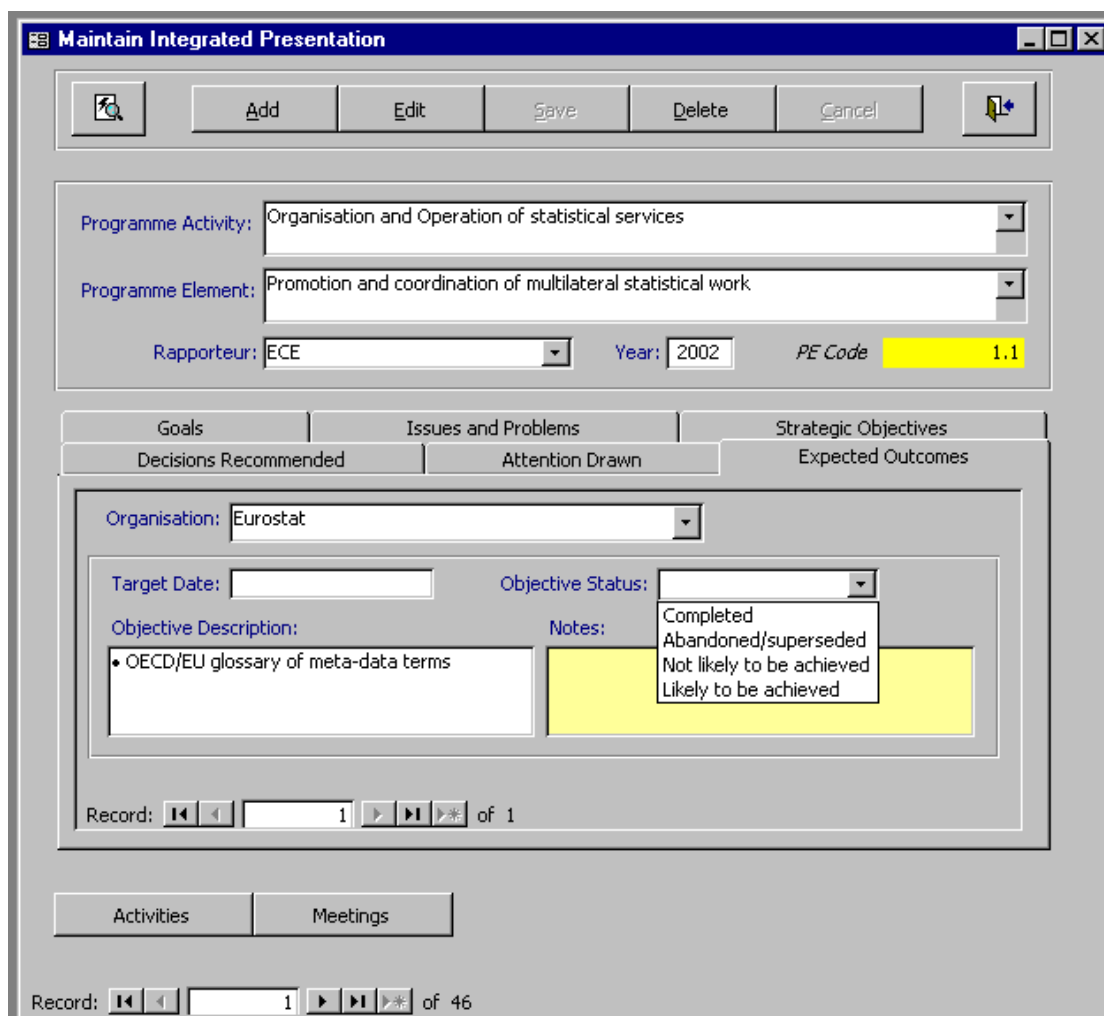
Progress of the first phase of the database project

4. To date, aims (c) and (d) have been met and the products to meet aims (a) and (b) are under development. In more concrete terms, the content of the 2002 IP, including the Rapporteurs' Reports and the Activities and Means sections are in the database, as are various items of ancillary information such as contact and authorship details. In addition, input and report screens have been developed.

Input

5. Examples of some of the input forms are provided below, so that the delegates may have an idea about the structure of data stored in the IP database. These forms will be used by the members of the Secretariat (and possibly other international organisations), rather than end-users.

6. The following illustration shows the screen that is used for the input of data:



7. Clicking on the tabs marked “Goals”, “Issues and Problems” and so on brings up and input screen for that item. In this example, the Expected Outcomes screen is shown, where “Organisation” can be chosen from a drop-down list, as can “Objective status” (as shown above).

8. The input form for meetings is similar and is shown below. The structure of the data fully corresponds to the past practice used for the IP. Agendas will continue to be included for ECE meetings, as the IP is at the same time the only presentation of the Conference’s work programme. In this example, eleven meetings have been input for this Programme Element (1.4) as is indicated by the scroll bar at the bottom of the screen. The “Approx Date” field is used where the exact dates are not yet known. The input screen for Activities is similar.

Maintain Meetings

Add Edit Save Delete Cancel

PE Code: **1.4** Year: **2002**

Title: EUROSTAT: Task Force: MEDSTAT, 9 - 10 September 2002 (+ 3 times a year in March, April and September)

Host 1: Eurostat Location:

Host 2: Start Date: 09/09/02 Approx Date:

Host 3: End Date: 10/09/02

Agenda (for ECE meetings):

Record: 1 of 11 (Filtered)

Reports

9. The most important part for the end-users of the IP database are the outputs. A set of pre-defined reports was created in the first phase of the database project, and this set is planned to be amended accordingly to the needs. The current list of reports is as follows:

- a. **All IP elements** including Rapporteurs’ Reports and Activities and means either for all

- Programme Elements (PE's) or for individual PE's;
- b. **The abstract of the IP**, as used for the Plenary session paper, again either for all Programme Elements (PE's) or for individual PE's;
 - c. **Lists of Expected Outcomes, Meetings and Activities**, which can be filtered by organisation, Key Word (currently the ACC categories), or year or a combination of some or all of these;
 - d. **List of meetings**, which can be filtered by Programme Activity (PA), PE, host organisation, Key Word (currently the ACC categories), or time interval or a combination of some or all of these. The selection screen is illustrated below;

- e. **List of activities**, which can be filtered by Programme Activity (PA), PE, organisation, Key Word (currently the ACC categories), or amount of ECE resources used or a combination of some or all of these;
 - f. **Word search results**: this allows the user to specify a word or part of a word and for the database to produce all parts of the IP featuring that word.
10. The reports are first shown on the screen before being committed to print or exported to word.

Dissemination of the IP using the web and other electronic media

11. It is planned to make the public version of the IP (i.e. with the public versions of the Rapporteurs' Reports) available on the Web by means of linked HTML pages derived from the reports modules described above. The Secretariat is also considering making copies of the database available to certain organisations for ease of use, but on the understanding that the definitive version resides with the Secretariat.

Interactivity and remote updating

12. It is recognised that the full benefits of the IP database will be realised when it is possible for authorised contributors to upload additions and changes remotely over the Internet. There are a number of technical issues relating to the possible platforms on which the database might be mounted for public use to be overcome before this enhancement can be implemented. However, the Secretariat is considering means for large contributors to submit their contributions in a form that can be loaded directly into the database without the need for extensive manual intervention. This issue will be dealt with in the second phase of the database

project.