



*Work Cluster 2. Sustainable urban development
Thematic discussion on ageing in cities*



Adapting cities to aging

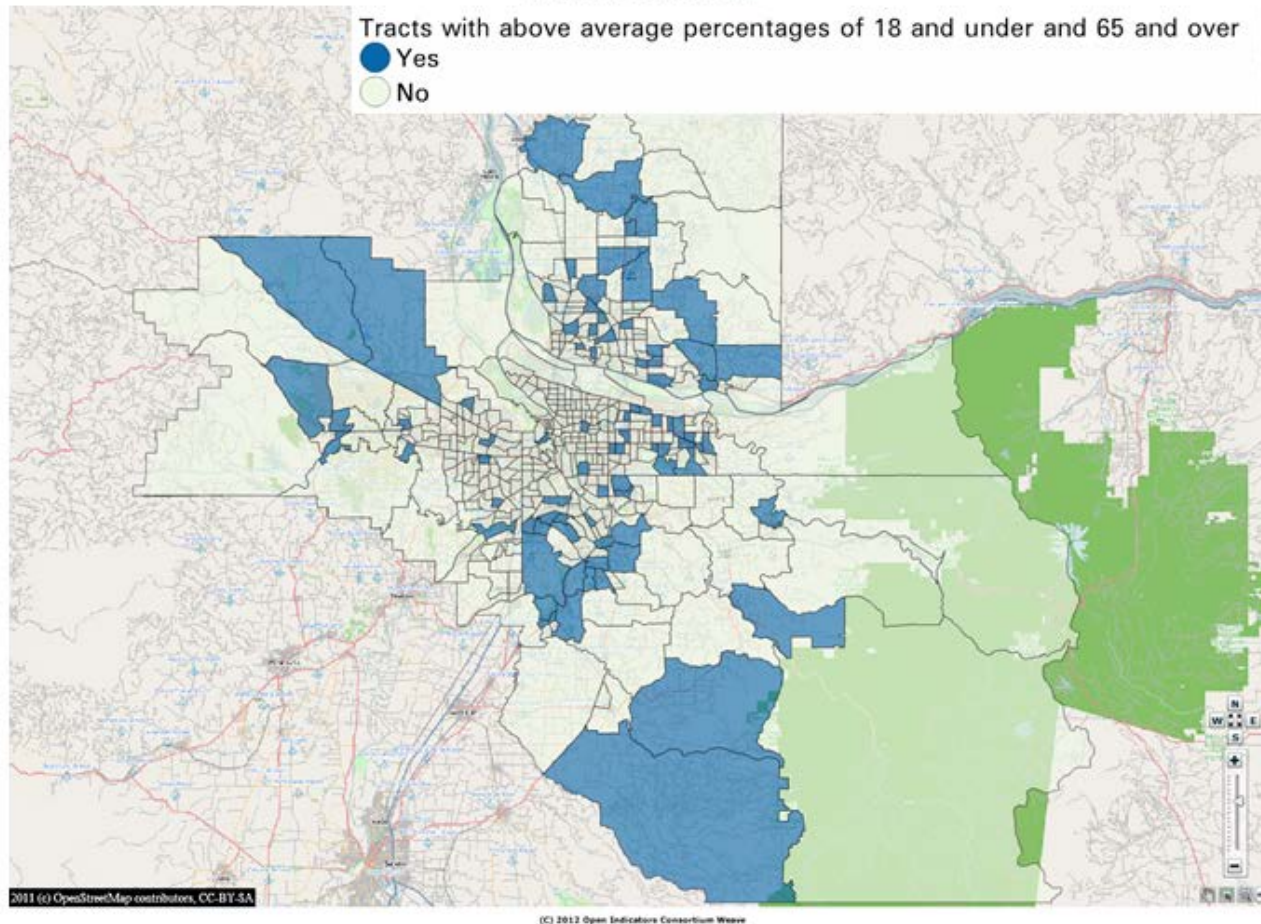
Dr Pierre-Marie Chapon

07/10/2013



1/ Portland, OR: Intergenerational Opportunity Areas

Greater Portland Pulse



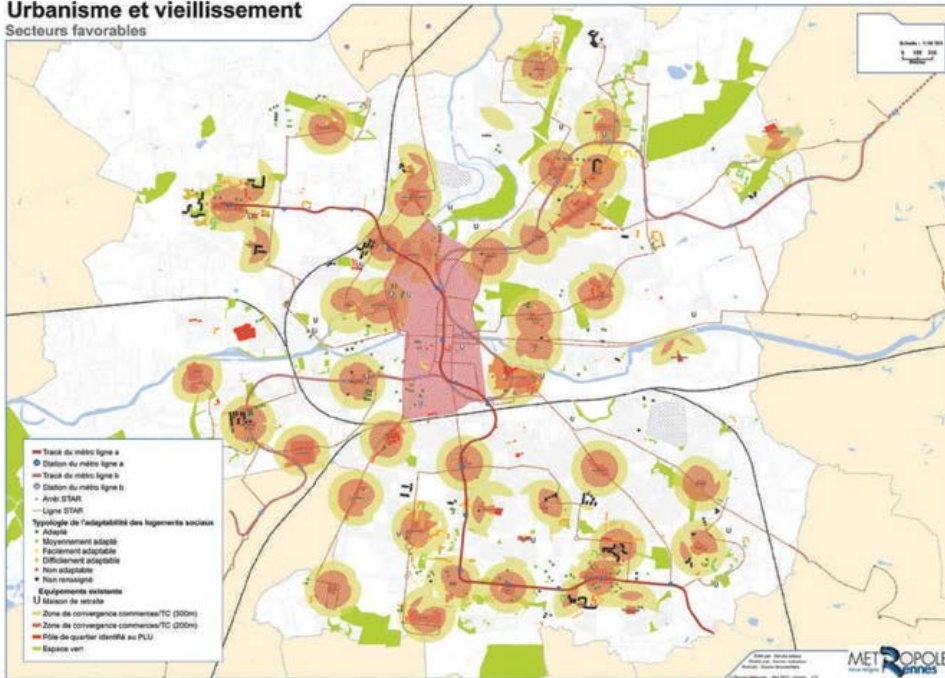
Source: US Census Bureau



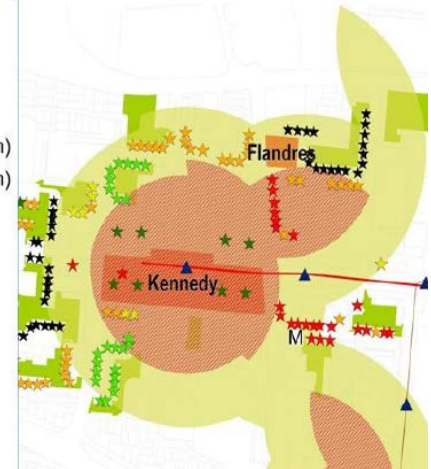
In a 2006 survey conducted by PSU's Institute on Aging, the first priority for older adults was greater access to outdoor spaces (Source Metro of Portland, OR)

2/ Inventory of favorable sectors in Rennes, France

Urbanisme et vieillissement Secteurs favorables



- ▲ Arrêt STAR
 - Tracé du métro ligne a
 - Ligne STAR
 - M Maison de retraite
 - ▨ Zone de convergence commerces/TC (200m)
 - ▨ Zone de convergence commerces/TC (300m)
 - Pôle de quartier identifié au PLU
 - Espace vert
- Typologie de l'adaptabilité des bâtiments
abritant des logements sociaux**
- ★ Adapté
 - ★ Moyennement adapté
 - ★ Facilement adaptable
 - ★ Difficilement adaptable
 - ★ Non adaptable
 - ★ Non renseigné



Source: Rennes Métropole

3/ Village to village network



4/ Conclusion

