



Reporting on global SDG indicator 6.5.2  
TEMPLATE of the second cycle for reporting

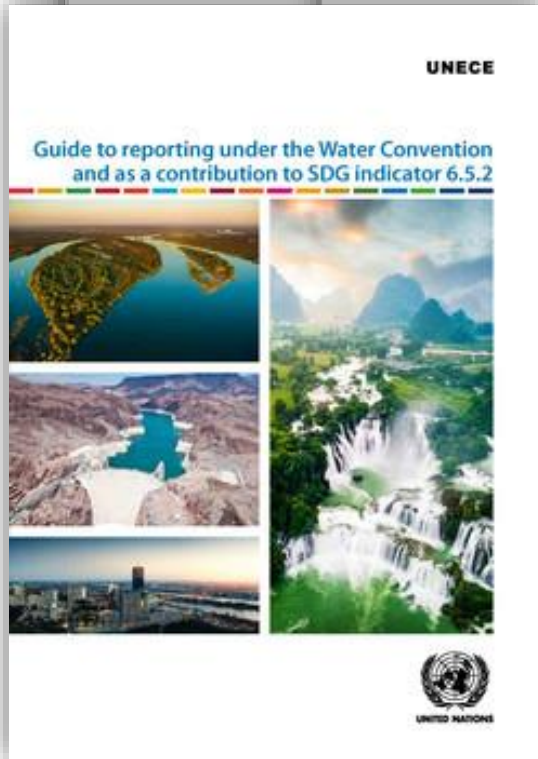
Content of the template

- The template is divided into four parts
- Section I - Calculations
- Section II - Information
- Section III - General
- Section IV - Final

Integrated Monitoring Guide for SDG 6  
Step-by-step monitoring methodology for SDG indicator 6.5.2 version "2020"  
Final version 2020-01-25

STEP-BY-STEP MONITORING METHODOLOGY FOR  
SDG INDICATOR 6.5.2

PROPORTION OF TRANSBOUNDARY BASIN AREA WITH AN OPERATIONAL ARRANGEMENT FOR WATER COOPERATION



Indicator 6.5.2 and main definitions	2
Transboundary River and Lake basins and aquifers management and SDG indicator 6.5.2	2
and main definitions	2
for transboundary aquifers	4
and Linkages to other Reporting Initiatives	4
State and links with the Convention on the protection and use of transboundary	4
freshwater lakes	4
and other Reporting Initiatives	5
between monitoring cycles	6
to	6
to calculate the indicator value	6
Calculations	6
Operational arrangements and their operationality	7
Criteria	7
Operationality	8
Operationality in data management and quality	8
Operationality in and computation of indicator 6.5.2	9
Operationality of transboundary River and Lake basins and aquifers	9
Operationality of the surface area of each transboundary basin and aquifer, and the total sum	9
Operationality of existing arrangements for transboundary cooperation in water management and verify	10
Operationality of arrangements covered by a cooperation arrangement	10
Operationality of which of the existing arrangements satisfy which criteria for operationality	11
Operationality of the indicator value	12
	12

# SDG Indicator 6.5.2

## Common difficulties in completing the national reports

Webinars on SDG indicator 6.5.2  
supporting countries in preparing national reports for the 2nd  
reporting exercise

12 May 2020

Alistair Rieu-Clarke  
UNECE consultant & Northumbria University



UN WATER

INTEGRATED MONITORING INITIATIVE FOR SDG 6  
SDG INDICATOR 6.5.2  
TRANSBOUNDARY WATER COOPERATION



UNECE



United Nations  
Educational, Scientific and  
Cultural Organization

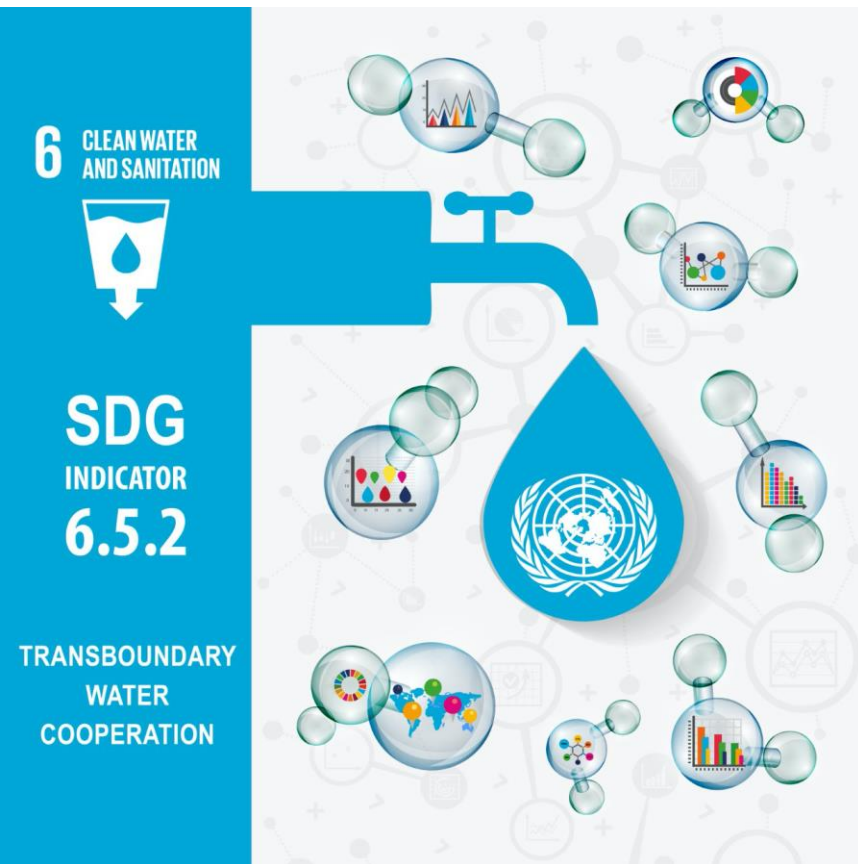


# Overview

- Calculating the surface area of river and lake basins at the national level
- Determining what constitutes
  - an ‘arrangement’
  - a ‘joint body or mechanism’
  - a ‘joint or coordinated water management plan or similar instrument’
- Reporting basins and sub-basins (section II of template)
- Ensuring consistency throughout the template



# A quick recap...



## Proportion of transboundary **basin area** with an **operational arrangement** for water cooperation

*The calculation of the indicator value is based on two main elements:*

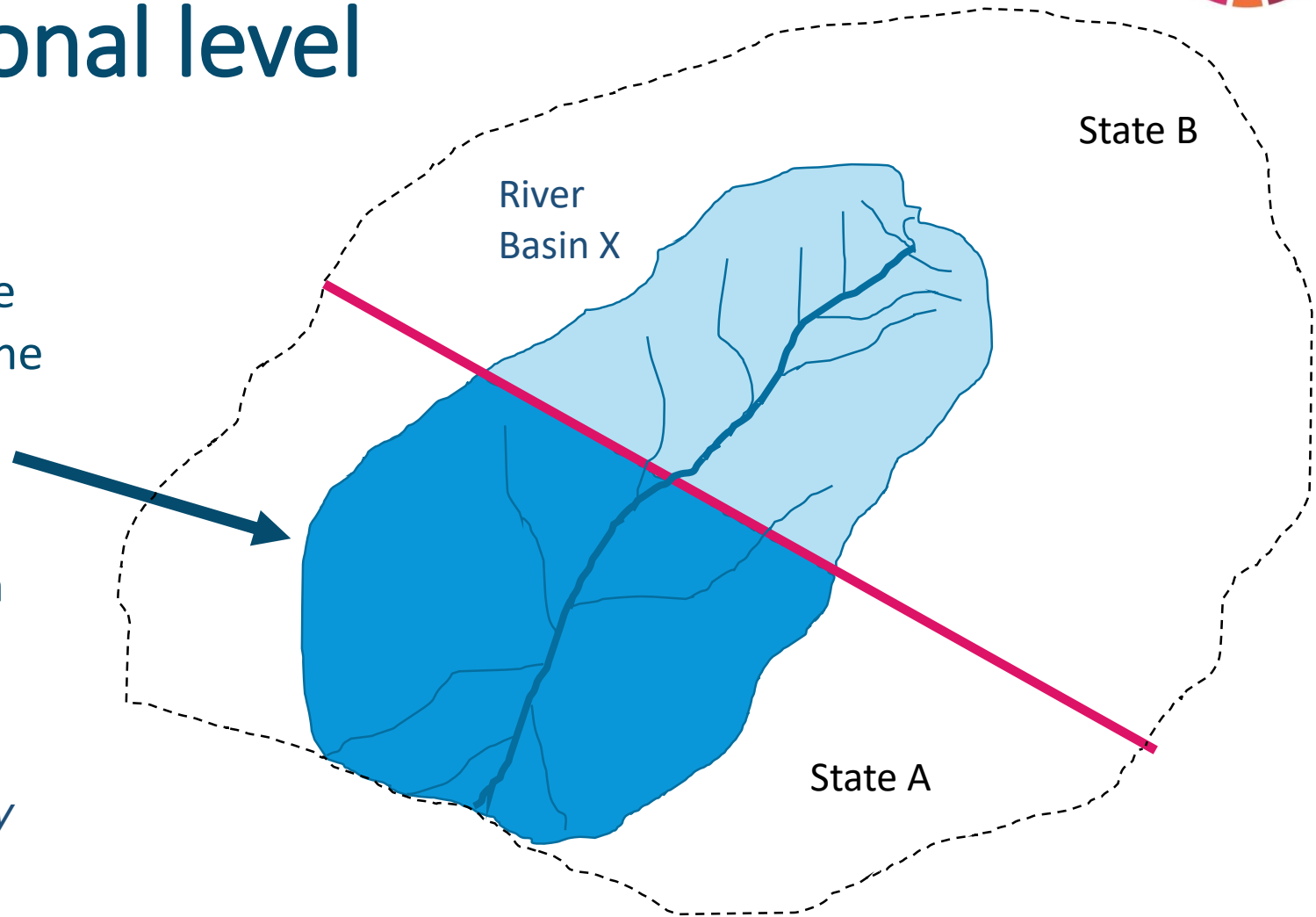
- *the spatial coverage of transboundary basin areas **located in a State**;*
- *a determination of the extent to which these areas are covered by **operational arrangements** for water cooperation.*

*(Step-by-Step Monitoring Methodology for SDG indicator 6.5.2, p. 3)*



# Calculating the surface area of river and lake basins at the national level

- Surface area (in km<sup>2</sup>) of a basin should be calculated **only** for the part of the basin that is within the territory of the country
- Don't 'double-count' main basin and sub-basins (section I)



*(Step-by-Step Monitoring Methodology for SDG indicator 6.5.2, p. 6-7)*



# What is an 'arrangement'?

- Formal commitments between the Riparian Parties.
- Agreements and arrangements can be called by many different names, e.g. treaty, convention, agreement, exchange of letters, declaration.
- Water provisions may be included in broader agreements on environmental cooperation or economic cooperation

*(See Step-by-Step Monitoring Methodology for SDG indicator 6.5.2, p. 3; Guide to Reporting, p.17)*



# What is an 'operational arrangement'?

- **A joint body or mechanism** (e.g. a river basin organization) for transboundary cooperation exists;
- **Regular (at least once per year) formal communications** between riparian States
- **Joint or coordinated water management vision/plan(s), or similar instrument in place**
- **Regular exchange (at least once per year) of data and information**



# What is 'a joint body or mechanism'?

- Several common features:
  - a permanent body;
  - composed of representatives of the riparian States;
  - usually comprised of a decision-making body;
  - usually having a secretariat; and
  - sometimes supplemented by subsidiary bodies
- Could be as simple as regular expert group or focal point meetings  
*(See Guide to Reporting, pp 26-30)*



# What are ‘joint or coordinated water management plan(s), or similar instruments’?

- Similar instruments include action plans, common strategies, or joint objectives/vision
- Should signal progress in the implementation of an arrangement and should NOT therefore be contained within the arrangement itself but adopted thereafter, e.g. a decision by the joint body or mechanism.
- They may cover a range of topics, e.g. IWRM, climate change, flood management

*(See Step-by-Step Monitoring Methodology for SDG indicator 6.5.2, p. 3; Guide to Reporting, p. 33-35)*





# How to structure the reporting of individual basins and sub-basins (section II)

- A lot of diversity in the basins and arrangements that countries may have in place, e.g.,
  - One basin shared with one other State
  - Multiple basins, with multiple States, and arrangements in place at multiple levels (basin, bilateral, sub-basin...)
- The simple scenario: several basins covered by several arrangements
  - Complete section II once for each basin
- For other scenarios see *Guide to Reporting*, p. 17.



# How to ensure consistency throughout the template?

- Section I asks countries to list transboundary basins/ sub-basins covered by an operational arrangement, as well as whether criteria for operability have been met
- Answers supplemented by responses to Section II
  - Q2           Agreements and arrangements
  - Q3           Joint body or mechanism
  - Q4           Management plans and similar
  - Q6           Exchange of data and information
- Make sure answers to Q2,3,4 & 6 (Section II) are consistent with responses in Section I!



# Thanks for listening!

## 6.5.2 Help Desk

[transboundary\\_water\\_cooperation\\_reporting@un.org](mailto:transboundary_water_cooperation_reporting@un.org)  
[transboundary\\_water\\_cooperation\\_reporting@unesco.org](mailto:transboundary_water_cooperation_reporting@unesco.org)

## Further information

**UNECE:** [www.unece.org/water/transboundary\\_water\\_cooperation\\_reporting.html](http://www.unece.org/water/transboundary_water_cooperation_reporting.html)

**UNESCO:** <https://en.unesco.org/themes/water-security/hydrology>

**UN-WATER SDG6 monitoring:** [www.sdg6monitoring.org/indicator-652](http://www.sdg6monitoring.org/indicator-652)

**UN-WATER SDG6 data portal:** [www.sdg6data.org/indicator/6.5.2](http://www.sdg6data.org/indicator/6.5.2)

Reporting on global SDG indicator 6.5.2  
TEMPLATE of the second cycle for reporting

Content of the template

The template is divided into 6 sections:

- Section I - Context
- Section II - Introduction
- Section III - General information
- Section IV - Findings
- Section V - Conclusions
- Section VI - Recommendations

Country name: [fill in]

Integrated Monitoring Guide for SDG 6  
Step-by-step monitoring methodology for SDG indicator 6.5.2 version "2020"  
Final version 2020-01-25

STEP-BY-STEP MONITORING METHODOLOGY FOR  
SDG INDICATOR 6.5.2

PROPORTION OF TRANSBOUNDARY BASIN AREA WITH AN OPERATIONAL ARRANGEMENT FOR WATER COOPERATION

CONTENT

Definitions	2
Water management and SDG indicator 6.5.2	2
Water	2
Water	4
Reporting Initiatives	4
Convention on the protection and use of transboundary	4
Initiatives	5
Water	6
Indicator value	6
Operationality	7
Water and quality	8
Indicator 6.5.2	9
Water and Lake basins and aquifers	9
Each transboundary basin and aquifer, and the total sum	9
For transboundary cooperation in water management and verify	10
Cooperation arrangement	10
Arrangements satisfy which criteria for operationality	11
	12
	12

UNECE

Guide to reporting under the Water Convention  
and as a contribution to SDG indicator 6.5.2

UNITED NATIONS



**SDG INDICATOR 6.5.2**  
TRANSBOUNDARY WATER COOPERATION



**UNECE**



United Nations  
Educational, Scientific and  
Cultural Organization