

Adjustment review under EMEP

Formal outcome of the 2019 review

9 Sept 2019, Geneva

Katarina Mareckova, Robert Wankmüller CEIP

Adjustments under the GP

- ▶ Parties may apply to adjust their emission reduction commitments or inventory data in **extraordinary circumstances**, as defined in the EMEP Executive Body decisions 2012/3 and 2012/4 (ECE/EB.AIR/111/Add.1) and *amended by EB decision 2014/1*.
 - ▶ (a) **Emission source categories** are identified that were not accounted for at the time when the emission reduction commitments were set;
 - ▶ (b) **Emission factors** used to determine emissions levels for particular source categories for the year in which emissions reduction commitments are to be attained are *significantly different* than the emission factors applied to these categories when emission reduction commitments were set;
 - ▶ (c) **The methodologies** used for determining emissions from specific source categories have undergone significant changes between the time when emission reduction commitments were set and the year they are to be attained.
-

2014/1

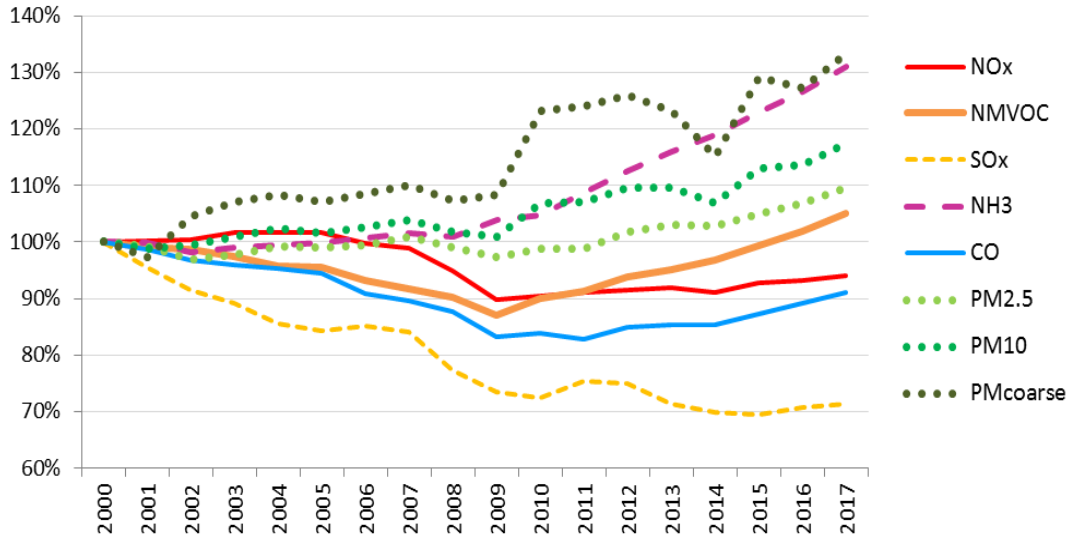
ECE/EB.AIR/127/Add.1 para 3

New para 2 bis.

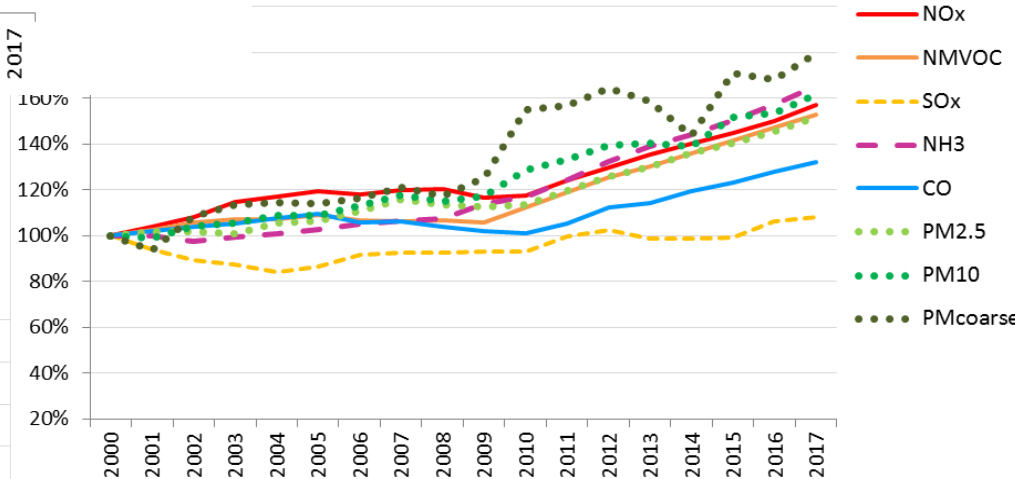
(b) An **emission factor or methodology** for determining emissions from a specific emission source category will only be assessed as **significantly different** from the emission factor or methodology used for determining emissions from this source category at the time that the emission reduction commitment was set if the change in the emission factor or methodology is the result of improved scientific understanding of the source since the emission reduction commitment was set and has **resulted in a revision of the *EMEP/EEA air pollutant emission inventory guidebook* or the applied country-specific emission factor or methodology.**



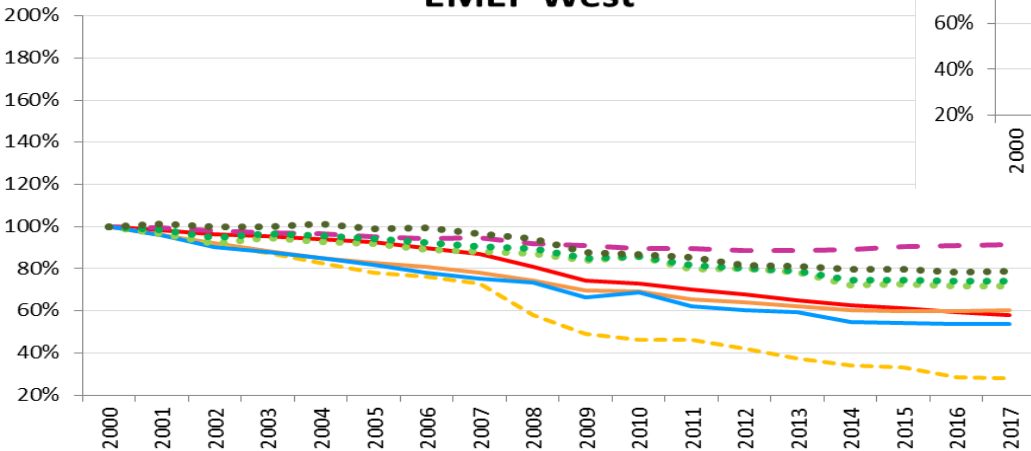
Emission trends in EMEP area gapfilled by expert estimates (main pollutants and PM)



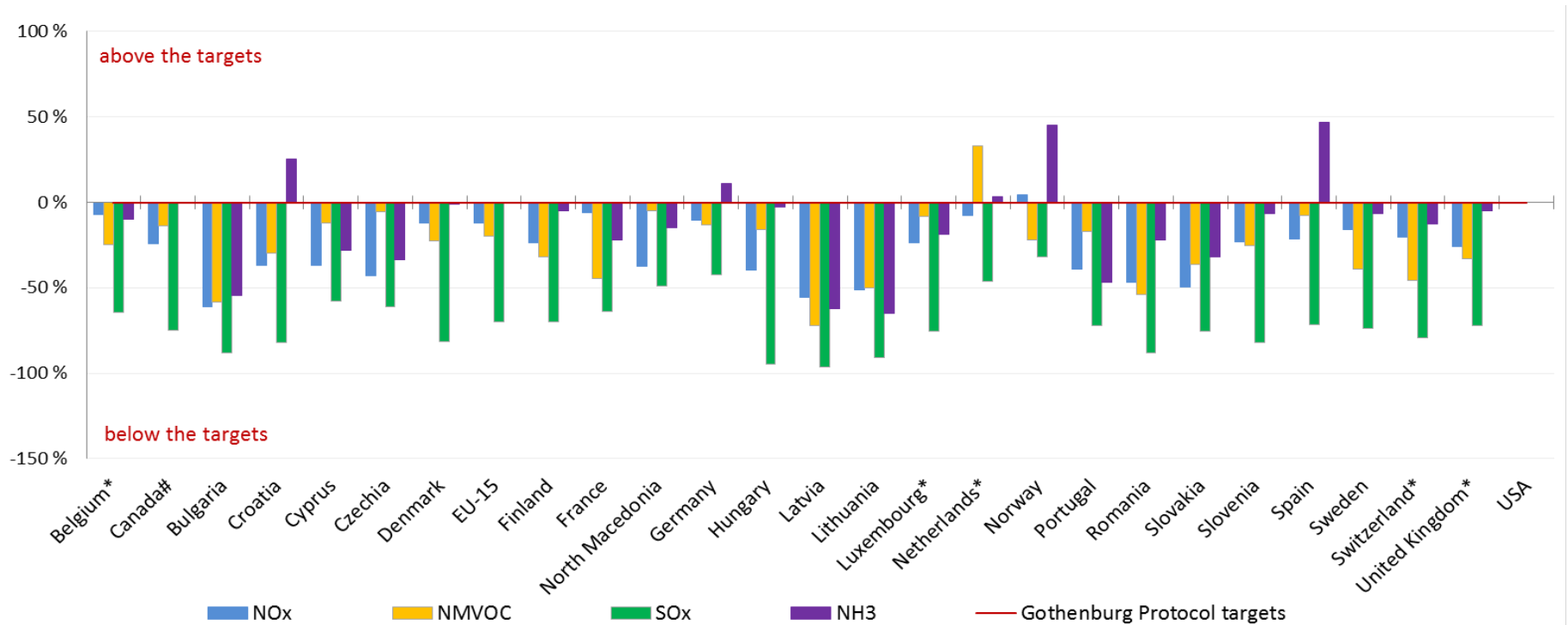
EMEP East



EMEP West



Distance to Gothenburg Protocol targets in 2017 (2019 reported data considering adjustments approved)



- ▶ *emissions based on fuel used for road transport (Reporting Guidelines UNECE 2014)
- ▶ NL adjustment not included
- ▶ United States reported national total emissions, however GP ceilings refer to USA – PEMA region



Adjustment application

- ▶ A Party planning an adjustment to its inventory for the purpose of comparing total national emissions with emission reduction commitments shall **indicate categories and pollutants concerned to the UNECE secretariat and CEIP in its notification** - deadline for notification is **15 February**.
- ▶ **Supporting documentation** shall be provided in IIRs or in a separate report latest **by 15 March**. The IIR template (**Annex II** to the 2014 Reporting Guidelines) lists the required supporting information.
- ▶ **Additional quantitative information** shall be submitted **by 15 March** in **Appendix B1 to the Adjustment Guidance** (Excel template).

Reporting of approved adjustments

1. Annex VII

- ▶ Parties shall report *details of their approved adjusted aggregated emissions* by **15 February**, using the appropriate row (143) contained in the main emissions reporting template ([Annex I](#)) as well as report detailed information by pollutant and sector for each adjustment using the template provided in [Annex VII](#) to reporting Guidelines.

2. Declaration of consistency

- ▶ Parties are invited to **declare in agreed format** that the methods/emission actors and activity data used for calculations of emissions are the same as in the year the adjustments were approved.

3. Parties have to provide detailed explanatory information if they recalculate emissions due to shift to higher Tier method, they do improve activity data or move to country specific methods

- ▶ *Reporting of information on adjusted emissions in no way removes the mandatory requirement for Parties to report unadjusted emissions as laid down in section V, subsections A to D, of these Guidelines.*



Adjustment review - process

(EMEP work plan 2018-19)

- ▶ Mandate to EMEP SB and CEIP to organise the review of adjustments provided in *EMEP Draft Mandates for scientific TFs and centers under Convention*
- ▶ **All submitted adjustment applications are subject to an expert review**
 - ▶ Assessment of formal criteria (*CEIP*)
 - ▶ Assessment of consistency with requirements of EB decision 2012/3 , 2012/4 amended by 2014/1 (*ERT*)
 - ▶ Assessment of the quantification of the impact of the revision (*ERT*)
- ▶ The initial checks, documentation and coordination of the review is performed by CEIP
- ▶ **The technical review** of adjustments is conducted by ERT – reviewers are selected from the EMEP roster of review experts
- ▶ Results of the review are published in the *Status report* to EMP SB and after approved also at CEIP website
http://www.ceip.at/adjustments_gp/adj_country_data/



Adjustment review 2019

1. **CEIP did organise the review of**
 - ▶ **1 new submitted adjustment and**
 - ▶ **9 Parties (cca 35 cases) adjustments approved in 2018** by setting up the review teams, preparing data for reviewers and updated templates for the reviewers.
2. The **2019 adjustment review** was performed parallel with the Stage 3 review.
 - a. Desk Review April – June
 - b. Coordinating meeting 25-28 June in CPH
 - c. Harmonization with review process under EU/NECD
3. **8 sectoral experts plus 1 lead reviewer** assessed submitted adjustment and completed relevant documentation.
4. Conclusions and recommendations of the review team have been summarised in **CEIP status report to EMEP SB Review of adjustment applications** (ECE/EB.AIR/GE.I/2019/10–ECE/EB.AIR/WG.I/2019/21).
5. CEIP **DB system** stores latest reported information and supports review teams at http://webdab1.umweltbundesamt.at/cgi-bin/adj_GP.pl



Table 5

Emission adjustments approved in previous years, as reported by countries in 2019 *Thousands of tons (kt)*

Country	Pollutant	2010	2011	2012	2013	2014	2015	2016	2017
Total (BE)	NO _x	-61.855	-61.268	-60.741	-62.209	-60.941	-58.259	na	na
Total (BE)	NM _{VOC}	0.000	na	na	na	na	na	na	na
Total (DK)	NH ₃	-7.547	-7.110	-6.994	-7.492	-7.911	-7.630	-8.248	-7.726
Total (DK)	NM _{VOC}	-35.436	-35.306	-35.663	-35.842	-35.714	-35.790	-35.829	-36.326
Total (FI)	NH ₃	-2.378	-2.142	-2.063	-1.882	-1.820	-1.703	-1.686	-1.579
Total (FR)	NO _x	-140.903	-144.895	-147.488	-160.004	-159.760	-155.742	-144.978	na
Total (DE)	NO _x	-287.904	-300.348	-298.988	-304.682	-297.907	-281.421	-251.195	-219.471
Total (DE)	NM _{VOC}	-201.227	-200.691	-204.130	-208.679	-210.286	-206.964	-204.137	-202.407
Total (DE)	NH ₃	-39.939	-49.741	-51.331	-59.692	-60.355	-61.034	-60.683	-61.609
Total (HU)	NM _{VOC}	-25.206	-24.929	-25.026	-25.054	-25.627	-26.253	-26.455	-26.189
Total (LU)	NO _x	-3.898	-4.164	-4.301	-4.392	-4.498	-4.361	-4.185	-3.935
Total (LU)	NM _{VOC}	-3.187	-3.076	-3.001	-3.090	-3.198	-3.273	-3.329	-3.378
Total (ES)	NO _x	-146.987	-136.360	-123.814	-114.218	-108.907	-99.367	-86.576	-73.590
Total (GB)	NO _x	-102.402	0	-99.877	na	na	na	na	na

2019

9 countries

>30 sector/pollutant cases

Adj. review Progress 2019

- All adj. reviews completed
- Status report provided to EMEP SB
- Web tool updated
- Country report (NL) finalized



Recommendations of ERT to EMEP SB (1)

Adjustments approved prior 2019

The adjustments reported by countries Belgium, Denmark, Finland, France, Germany, Hungary, Luxembourg, Spain and Great Britain prior to 2019 refer to **NO_x, NMVOC and NH₃ emissions** for various NFR sectors (previously Road transport and diverse Agriculture categories).

The ERT assessed the reported data and concluded that the **adjustments met all of the requirements laid out in EB decision 2012/12 and in the Technical Guidance**, and therefore recommended that the EMEP Steering Body **ACCEPT** all of the adjustments as reported by countries Belgium, Denmark, Finland, France, Germany, Hungary, Luxembourg, Spain and Great Britain.

Detailed information on each reported adjustment may be found in **chapter V and Table 7** of the *Adjustment status report*.



Recommendations of ERT to EMEP SB (2)

NEW Adjustment application received in 2019

- ▶ The adjustment applications that had been **made by the Netherlands** were assessed.
- ▶ The ERT determined that additional information was needed and the Party provided the requested information during the review.
- ▶ Country specific RR was made available to the NL and is published as informal documents to EMEP SB meeting

Recommendations of ERT to EMEP SB

Country	Sector	NFR	Pollutant	Years	ERT recommendation
Netherlands	Agriculture	3B	NMVOC	2010–2016	Accept
Netherlands	Agriculture	3D	NMVOC	2010–2016	Accept
Netherlands	Agriculture	3B3	NH3	2017	Accept
Netherlands	Agriculture	3De, 3Da4	NH3	2014-2017	Accept

Information on CEIP website

NEW: Adjustment Information and Administration Tool

This online DB system compares adjustments approved in previous years with the latest reporting.

Adjustments 2019

One Party (**Netherlands**) submitted new adjustment application in 2019. **Nine Parties** (BE, DK, FI, FR, HU, DE, LU, ES, UK) reported approved adjustments. The review of all submitted adjustments is planned for April - June.

Recommendations of the expert review team (ERT) to the EMEP Steering Body (SB) will be summarized in the CEIP status Report by the end of June.

Party	Application	Approved	Other	Review Report
BELGIUM	NA	Annex_VII	Additional_Information	NA
DENMARK	NA	Annex_VII	Additional_Information	NA
FINLAND	NA	Annex_VII	Additional_Information	NA
FRANCE	NA	Annex_VII	Additional_Information	NA
GERMANY	NA	Annex_VII	Additional_Information	NA
HUNGARY	NA	Annex_VII	Additional_Information	NA
LUXEMBOURG	NA	Annex_VII	Additional_Information	NA
NETHERLANDS	Application	NA	Additional_Information	
SPAIN	NA	Annex_VII	Additional_Information	NA
UNITED KINGDOM	NA	Annex_VII	Additional_Information	NA

Convention on Long-range Transboundary Air Pollution
emep Co-operative programme for monitoring and evaluation of the long-range transmissions of air pollutants in Europe

CEIP umweltbundesamt[®]



Home Contact Links Disclaimer Search

CEIP

Home > Adjustments under the GP

UNECE, CLRTAP, EMEP, TFEIP

Adjustments under the GP

Countries

Parties may apply to adjust their emission reduction commitments or inventory data in extraordinary circumstances, as defined in [EMEP Executive Body decisions](#) [PDF, 79KB] [2012/3](#) [PDF, 79KB] and [2012/4](#) [PDF, 6.7KB] (see ECE/EB.AIR/111/Add.1) and amended by EB decision 2014/1.

Reporting Instructions

Check your inventory (RepDab)

Guidance on the application process to adjust either an emission reduction commitment or an emission inventory is available separately in [Executive Body decision 2012/12](#) [PDF, 94KB] (see ECE/EB.AIR/113/Add.1). Additional guidance for Parties and reviewers has been adopted during 33rd EMEP EB meeting in Dec 2014 (informal document No 6).

Status of reporting

WebDab (Emission database)

A Party planning an **adjustment to its inventory** for the purpose of comparing total with emission reduction commitments shall indicate to the UNECE secretariat notification categories and pollutants concerned. Deadline for notification is

notification shall be provided in country IIR or in a separate report by 15 April (Annex II to the 2014 Reporting Guidelines) lists the required on. Additional quantitative information shall be submitted in form of Excel (Adjustment Guidance).

all report details of their approved adjusted aggregated emissions are contained in the main emissions reporting template (annex I), as well as information by pollutant and sector for each adjustment using the template II to these Guidelines. Reporting of information on adjusted emissions in no mandatory requirement for Parties to report unadjusted emissions as laid out in subsections A to D, of these Guidelines.

Party applying an adjustment to its inventory for the purposes of comparing total national emissions with emission reduction commitments shall **notify the secretariat** of the adjustment when it submits its annual emission data to EMEP.

The EMEP Steering Body, in conjunction with other appropriate technical bodies under EMEP, will **review** the supporting documentation and assess whether the adjustment is consistent with the circumstances described in paragraph 6 and the guidance to be adopted in accordance with paragraph 7.

The secretariat will

http://www.ceip.at/adjustments_gp

CEIP umweltbundesamt[®]

Lessons learnt

- ▶ **Timeliness of reporting - crucial**, desk review starts in April-May, **status report for EMEP SB is due by the end of June**, country review reports have to be finalised before EMEP SB meeting in Sept
- ▶ Some countries again **mixed reporting formats** of *approved adjustments* and *new adjustment applications*
- ▶ In most of the cases, the ERT determined that **additional information was needed from the Party** to enable a sufficiently detailed review.
- ▶ Every year the review of a few *adjustments approved in previous years* requires **full review**
- ▶ **Provision of transparent documentation and timely feedback by Parties is crucial for the review process.**



Lessons learnt cont.



- Review of adjustment applications is resource demanding procedure (1 LR, 8 sectoral experts, technical support of CEIP and of UNECE secretariat)
- With 6 years to draw on, the review process is now considerably more established, and also more efficient.
- There are considerably more previously approved adjustments to review and fewer new applications = > increasing demand to manage the process / i.e. on resources of EMEP
- Cooperation/ harmonization with review performed under NECD continues....

