



Survey on Methane Emissions in Extractive Industries

Scott Foster, Director, UNECE Sustainable Energy Division





Purpose of Survey

- Explore practices for monitoring, measuring, recording, and reporting methane emissions in extractive industries.
- Establish a starting point for development of Best Practices for Monitoring, Reporting, and Verifying Methane Emissions in the Extractive Industries.
- Assess what is needed to achieve the goal.

Survey

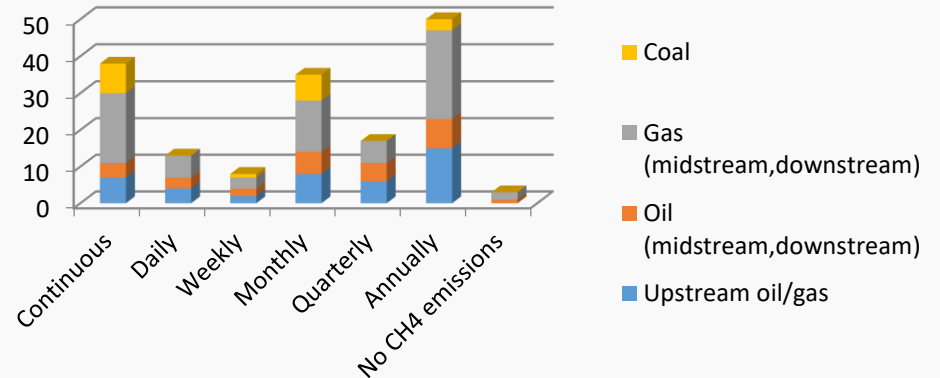
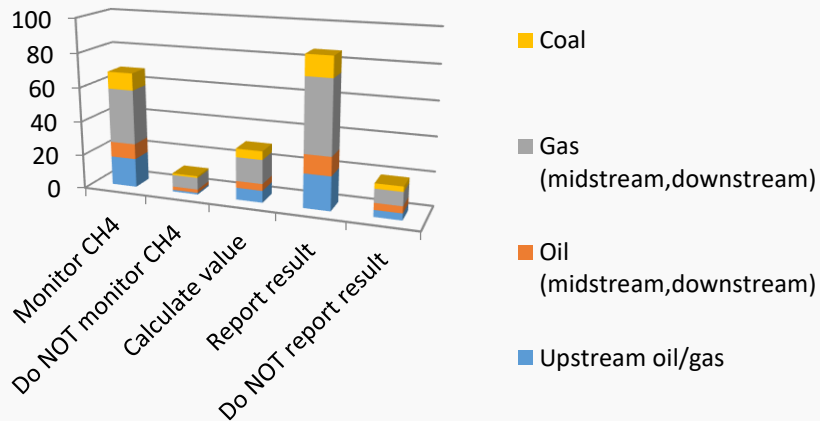
What we have

ENERGY



What Has Been Done

- Survey was developed and distributed among stakeholders.
- Initial analysis of results in progress.





Steps Forward

- Full analysis and presentation as a report.
- Solicitation for case studies to illustrate practices.
- Incorporate results into the Model Framework for Reducing Methane Emissions along the Gas Value Chain.
- Engage with other relevant UNECE Groups of Experts (e.g. on Coal Mine Methane) and solicit for their input to the Final Report.
- Engagement with Partners (e.g. WPC, IGU, WCA).
- Advance draft of Best Practice Guidance.



Thank You!



Sustainable Energy Division

UNECE