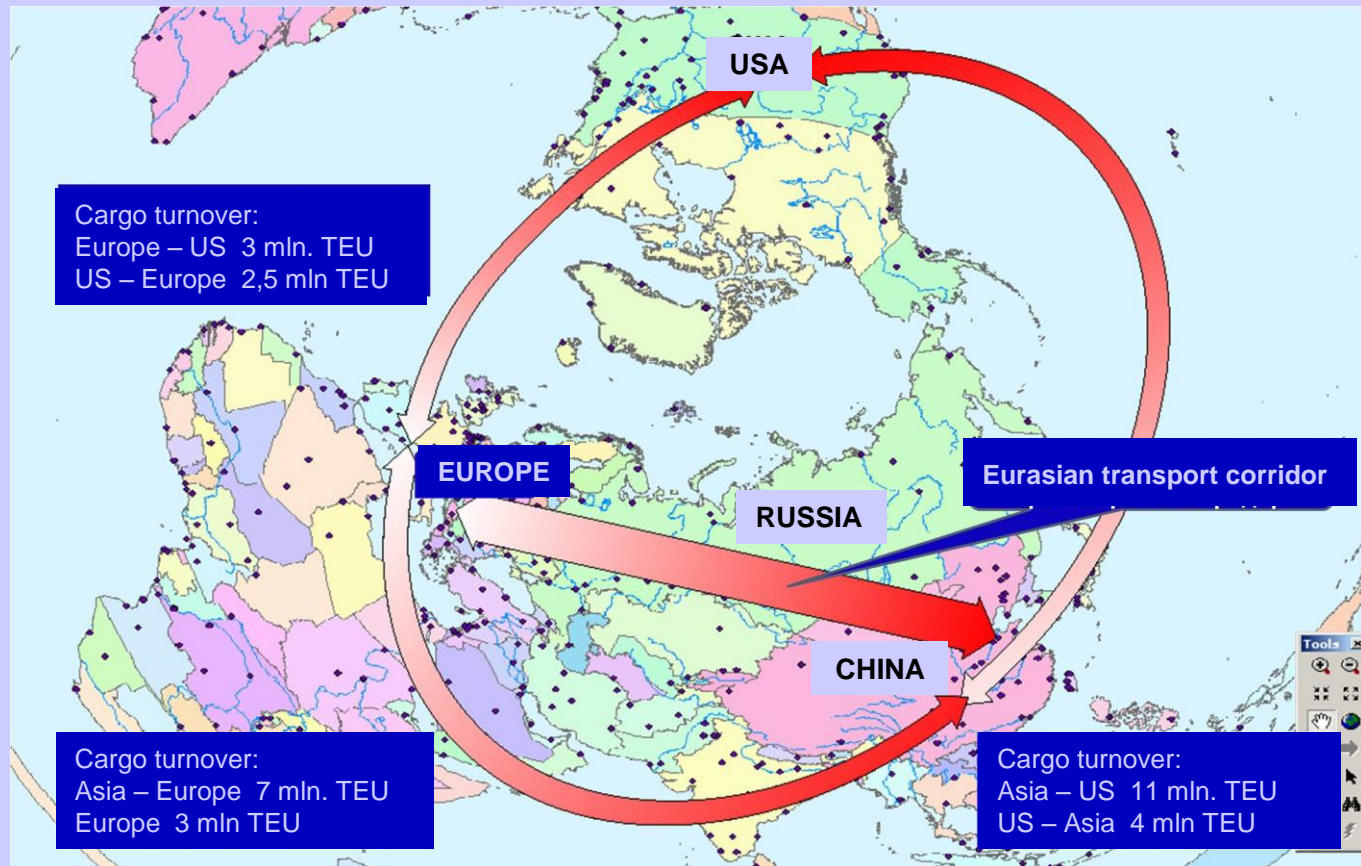


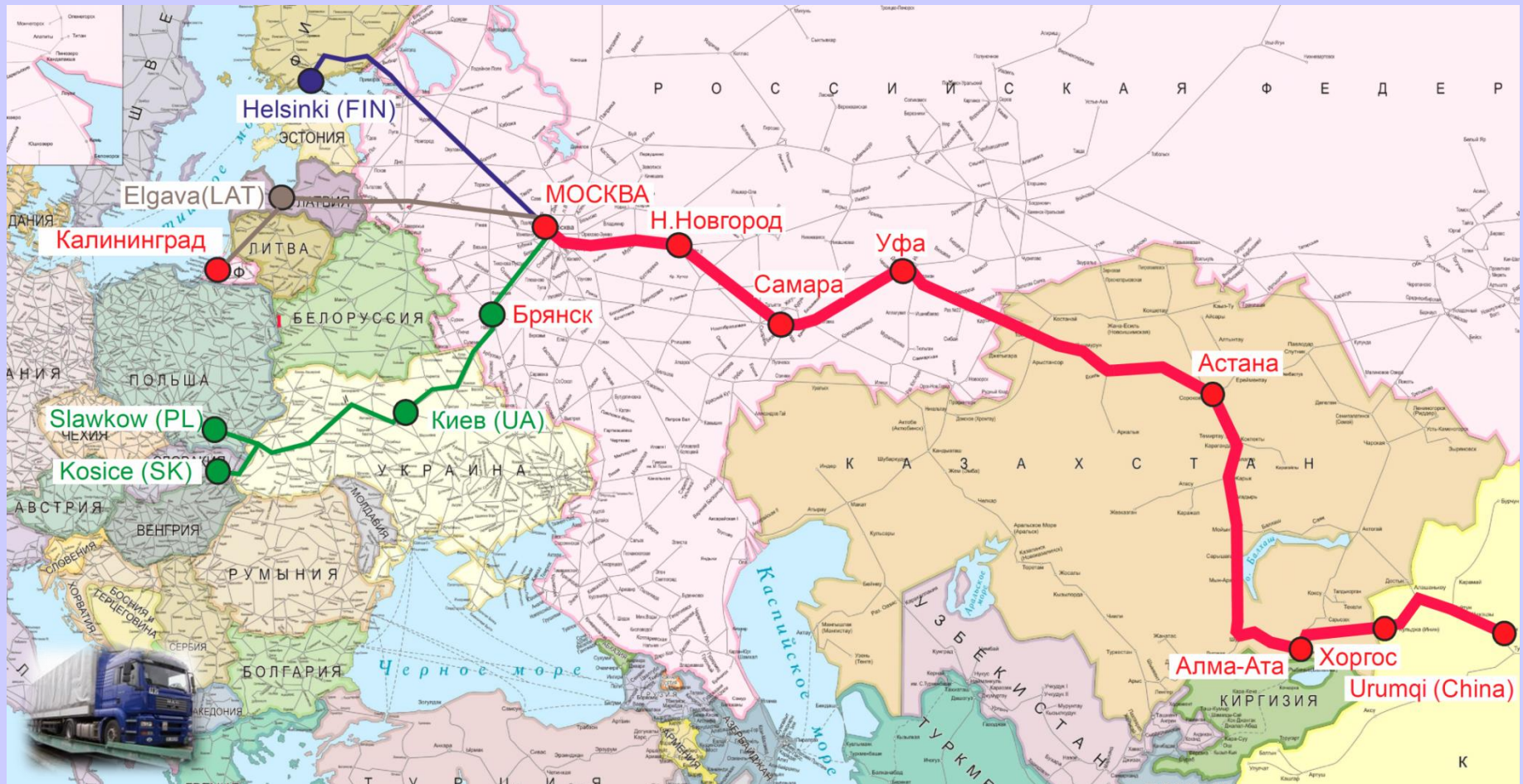
# Combined transport (contrailer) concept

## EURASIAN TRANSIT CORRIDOR AT THE GLOBAL CARGO TURNOVER MAP



# Combined transport (contrailer) concept

## EURASIAN CONTRAILER PERSPECTIVE ROUTES



# **Combined transport (con trailer) concept**

## **INTERGOVERNMENTAL AGREEMENT ON CONTRAILER TRAINS OPERATION**

**Proposed Parties to the Agreement: Finland, Latvia, Lithuania, Poland, Russia, Ukraine**

**Agreement: General principles, definition of a con trailer block-train**

**Annex 1: Definition of con trailer routes within the Parties respective territories**

**Annex 2: Key terminals and border-crossing rail stations**

**Annex 3: - Key technical parameters of railway lines for con trailer train operation;  
- loading gage checkup procedures**

**Annex 4: Con trailer train operation regulations (incl. interaction between rail administrations and con trailer train operators)**

**Annex 5: Customs and border-crossing procedures for con trailer block-train**



# Combined transport (con trailer) concept

## INTERGOVERNMENTAL AGREEMENT ON CONTRAILER TRAINS OPERATION

### Annex 1: Definition of con trailer routes within the Parties respective territories

(The exact routes are subject for approval/agreement by the Parties)



# Combined transport (contrailer) concept

## INTERGOVERNMENTAL AGREEMENT ON CONTRAILER TRAINS OPERATION

### Annex 2: Key terminals and border-crossing rail stations

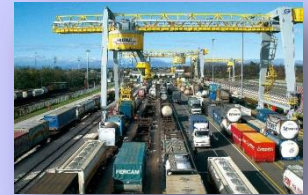
#### Contrailer terminals: :

- Slawkuw (PL);
  - Kiev (UA);
  - Kaliningrad (RUS);
  - Elgava (LAT);
  - Moscow region (RUS)
  - Helsinki (FIN) – modernization
- } to be commenced

#### Border-crossing rail stations:

Vainikkala – Buslovskaya	/Finland –Russia/
Zilupe – Posin	/Latvia – Russia /
Meitene – Yonishkis	/Latvia – Lithuania /
Nesterov – Kybartay	/Russia – Lithuania/
Sovetsk – Pagekyay	/Russia – Lithuania/
Mockava – Trakishky	/Lithuania – Poland/
Kyana – Gudokai	/Lithuania – Belorussia/
Hrubeshuw – Izov	/Poland – Ukraine /
Zernovo – Suzemka	/Ukraine – Russia /

#### Automatic rail gauge change system stations

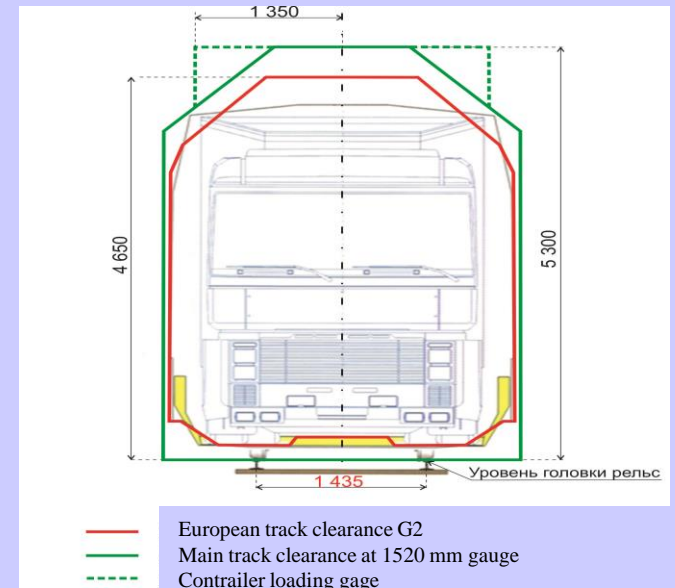
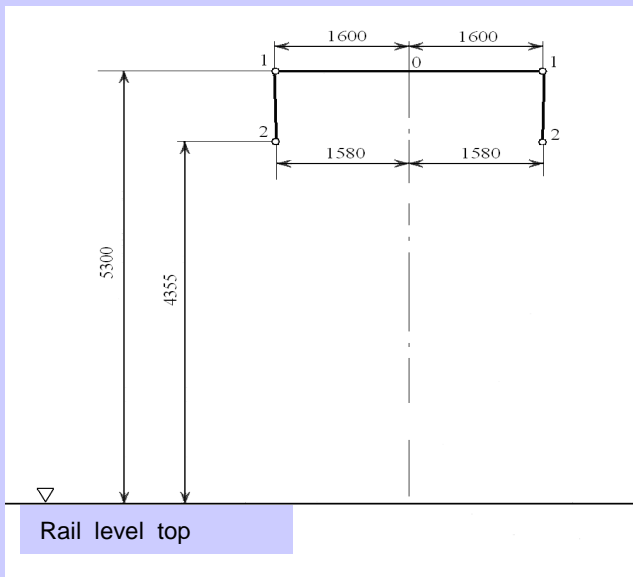


# Combined transport (con trailer) concept

## INTERGOVERNMENTAL AGREEMENT ON CONTRAILER TRAINS OPERATION

### Annex 3: - Key technical parameters of railway lines for con trailer train operation - Loading gage checkup procedures

- Max. height of a semi-trailer top (at 3 200 mm width) over rail level = 5 300 mm
- Con trailer trains operation shall be launched upon track clearance check-up by special wagon laboratory
- Line commencing shall be followed by regular loading gage safety gap checkup



# Combined transport (contrailer) concept

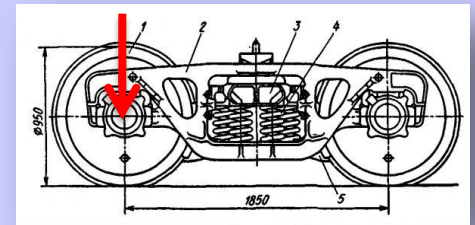
## INTERGOVERNMENTAL AGREEMENT ON CONTRAILER TRAINS OPERATION

Annex 4: Contrailer train operation regulations  
(incl. interaction between rail administrations and contrailer train operators)

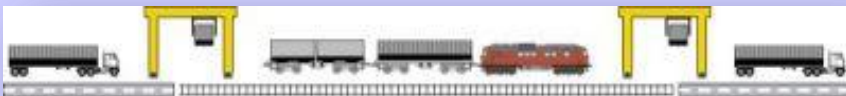
Allowed block-train speed up to 120 km p/h (under condition of axle load < 20 tons per axle)

Possibility of a single railway bill for the train / group of wagons

Railway fares are adequate to 1 tn/km of the similar fares by road transport



Unaccompanied combined transport



Accompanied combined transport



# Combined transport (con trailer) concept

## INTERGOVERNMENTAL AGREEMENT ON CONTRAILER TRAINS OPERATION

### Annex 5: Customs and border-crossing procedures for con trailer block-train



Preliminary electronic declaration

Documental customs clearance at border-crossing point

Full customs clearance procedures are effected at the terminal of final destination

Con trailer train operator(s) / freight forwarder(s) shall be responsible for customs clearance formalities/procedures performance in due course

