

Warehousing



Picture 1 : 2-layer FBC pile. 2



Picture 2 : 2-layer FBC pile. 3.



Picture 3 : 3-layer FBC pile.



Picture 4 : FBC pile disbanding

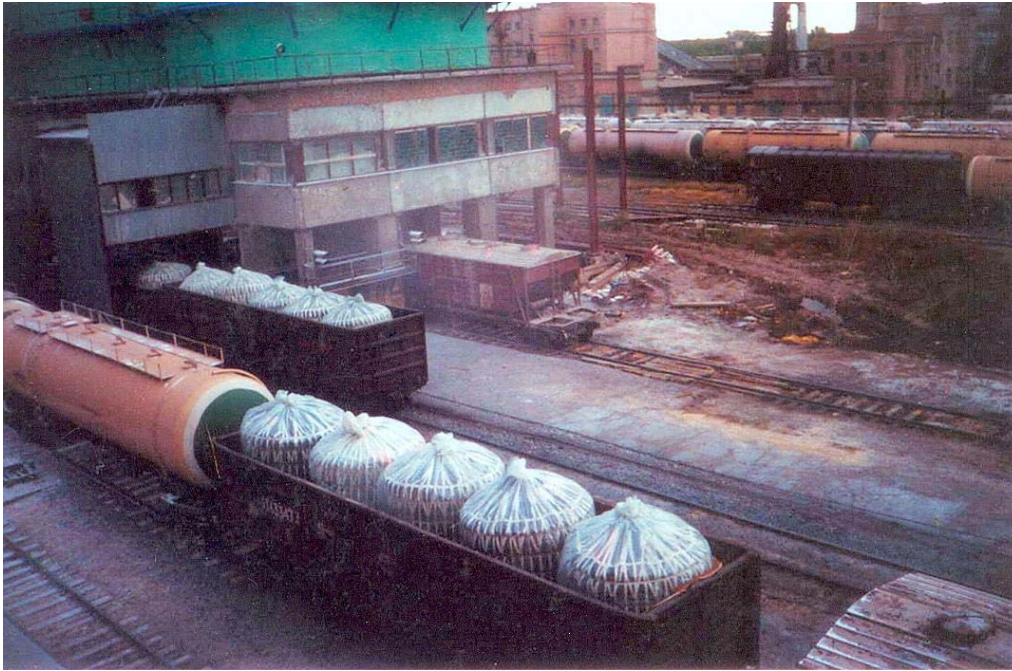


Picture 5 : FBC piling in one layer



Picture 6 : FBC piling in one layer

Structure



Picture 7 : FBC for multimodal transportation (in a railway car)



Picture 8 : FBC for multimodal transportation (in a truck)



Picture 9 : FBC for multimodal transportation (in a vessel hold)



Picture 10 : FBC in a special (elongated) railway car.



Picture 11 : FBC placement in a railway car



Picture 12 : FBC with dangerous goods UN3077 in a railway car



Picture 13 : Tied up FBC loading arms

Testing



Picture 14 : Determination of the critical angle of FBC filled with highly fluid alum earth



Picture 15 : FBC body waterproofness test. 1



Picture 16 : FBC body waterproofness test. 2



Picture 17 : FBC body waterproofness test. 3

Transport



Picture 18 : Secured FBC transportation in a car body and in a trailer1



Picture 19 : Secured FBC transportation in a car body and in a trailer2



Picture 20 : Secured FBC transportation in a long car body. 3



Picture 21 : Unsecured FBC transportation at an automobile platform⁴



Picture 22 : Unsecured FBC transportation by a truck for weighing³



Picture 23 : Unsecured FBC transportation in a long car body¹



Picture 24 : Unsecured FBC transportation in a long car body2



Picture 25 : Unsecured FBC in a marine vessel hold1



Picture 26 : Unsecured FBC in a marine vessel hold2



Picture 27 : Unsecured FBC in a marine vessel hold4



Picture 28 : Unsecured FBC in a specialized open-top railway car3



Picture 29 : Unsecured FBC in a standard open-top railway car 1



Picture 30 : Unsecured FBC in a standard open-top railway car 2



Picture 31 : Unsecured FBC in a standard open-top railway car 4

Unloading



Picture 32 : Empty FBC at 4-sling crane load carrier after unloading



Picture 33 : Empty FBC at 8-hook crane spreader after unloading



Picture 34 : FBC lifting with 4-sling crane load carrier. 2



Picture 35 : FBC unloading from the zero elevation into a batcher with no dust generation



Picture 36 : FBC unloading from the zero elevation into a vessel hold without dust generation



Picture 37 : FBC unloading into a cement truck hatch. 2



Picture 38 : FBC unloading into a cement truck hatch. 3.



Picture 39 : FBC unloading into a covered car using a tray



Picture 40 : FBC unloading into a hopper car hatch. 1



Picture 41 : FBC unloading into a hopper car hatch. 2



Picture 42 : FBC unloading into a hopper car hatch. 5



Picture 43 : FBC unloading into vessel cargo holds hatches



Picture 44 : KCL unloading from FBC from the zero elevation into a vessel hold



Picture 45 : KCL unloading from FBC into a vessel hold



Picture 46 : Sulphur unloading from FBC into a vessel hold 1
