

Table 1

Table 1.4.1
Key data and ratios for the country groups, 2015
Source: Annex 3

	Area of forest and other wooded land	Forest cover	Ratio of forest area to population	Share of urban population	Average GNP per head
	Million ha	%	Ha/head	%	2010 \$/head
ECE East	909.2	52.9	4.5	72%	8,061
ECE Central	206.9	42.3	0.4	73%	35,371
ECE South-East	56.2	11.4	0.3	58%	7,572
ECE West	719.3	37.6	2.1	82%	48,652
ECE Region	1,891.6	41.0	1.5	73%	31,101
EU-28	181.2	42.9	0.4	74%	35,231

Map 1

Figure 1.4.2
Forest and other wooded land in percent of land area, 2015
Source: Annex 3

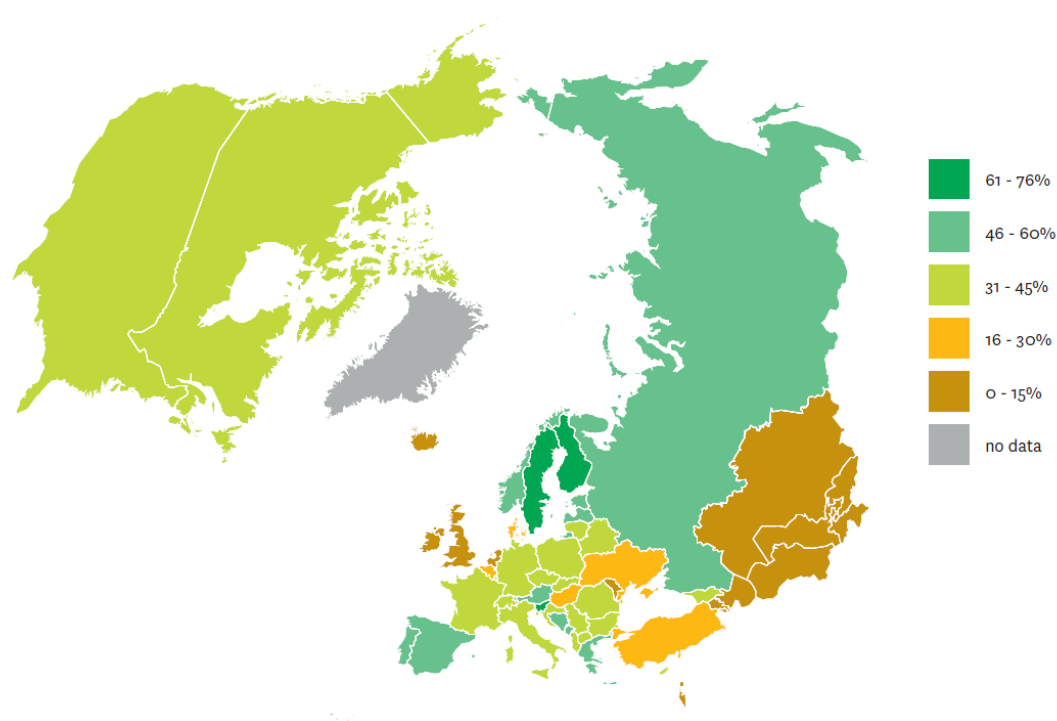


Table 2

Table 2.1.1

Situation and trends in area of forest and other wooded land

Source: Annex 3

	Area of forest and other wooded land (million ha)				Change 2000-2015	
	2000	2005	2010	2015	million ha	%
ECE East	900.0	900.9	910.1	909.2	+9.2	+1.01
ECE Central	201.7	203.2	204.9	206.9	+5.2	+2.52
ECE South-East	54.0	54.6	55.8	56.2	+2.2	+3.88
ECE West	707.8	708.6	712.9	719.3	+11.5	+1.60
ECE Region	1,863.6	1,867.4	1,883.6	1,891.6	+28.1	+1.48
EU-28	177.7	179.1	180.3	181.9	+4.2	+2.31

Table 3

Figure 2.1.4

Total carbon stock in aboveground living biomass for all ECE member States by the four groups

Source: Annex 3



Table 4

Table 2.1.5

Area of certified sustainably managed forests in the ECE Region, 2007-2014

Sources: UNECE/FAO Forest Products Annual Market Review 2008-2009 for 2007;

UNECE/FAO Forest Products Annual Market Review 2013-2014 for 2014

	Million ha		Change (%)	Share in 2014 (%)	Certified share of total forest area in 2014 (%)
	2007	2014			
ECE West	146.2	216.7	48.2	56.6	33.0
ECE Central	85.9	110.3	28.4	28.8	60.6
CIS	19.4	55.7	187.1	14.6	6.5
Total	251.5	382.7	52.2	100.0	22.5

Table 5

Table 2.2.3

Contribution of the forest sector to gross domestic product

Source: FAO, 2014.

	Share of GDP (percent)			Contribution to GDP (\$ billion)		
	2000	2005	2011	2000	2005	2011
ECE East	1.3%	1.0%	0.8%	14.6	15.6	15.2
ECE Central	1.2%	1.0%	0.9%	176.5	159.5	149.1
ECE South-East	0.5%	0.5%	0.6%	3.9	4.4	6.7
ECE West	1.2%	1.0%	0.7%	178.8	153.0	115.5
ECE Total	1.2%	1.0%	0.8%	373.8	332.5	286.4

Table 6

Table 2.2.7

Change of employment in forestry and forest sector in the top five ECE countries by forestry employment declines and in the ECE Region , 2000 to 2010

Source: Annex 3

	Change of employment			
	Forestry		Total Sector	
	1,000 FTE	%	1,000 FTE	%
USA	-20	-27%	-504	-39%
Russian Federation	-133	-66%	-199	-20%
Canada	-35	-40%	-129	-35%
Ukraine	-28	-29%	-45	-23%
Czech Republic	-16	-51%	-34	-28%
ECE East	-158	-48%	-241	-19%
ECE Central	-34	-6%	-575	-19%
ECE South-East	12	23%	12	5%
ECE West	-55	-34%	-633	-38%

Note: Total sector employment includes forestry, solid wood products, and pulp and paper sectors.

Table 7

Table 2.2.6

Top ten forest sector countries by employment 2011

Source: Annex 3

By forest sector share of total employment				By total forest sector employment			
	region	% of total employment	1000 persons		region	% of total employment	1000 persons
Latvia	Central	3.5%	42	USA	West	0.5%	827
Estonia	Central	3.1%	22	Russia	East	0.8%	600
Finland	Central	2.8%	75	Germany	Central	0.7%	317
Belarus	East	2.5%	112	Italy	Central	1.0%	258
Slovenia	Central	2.4%	25	Poland	Central	1.4%	252
Slovakia	Central	2.2%	62	Canada	West	1.2%	234
Czech Rep.	Central	2.1%	110	Spain	Central	0.7%	162
Sweden	Central	2.0%	100	France	Central	0.6%	161
Lithuania	Central	1.7%	28	Turkey	South-East	0.6%	153
Austria	Central	1.5%	65	Ukraine	East	0.6%	142