



INTERNATIONAL UNION
OF RAILWAYS

UIC railway statistics

- Latest updates
- Rail traffic trend monitoring
- Data collected for sustainable development projects

Alice Favre
Head of Statistics Unit



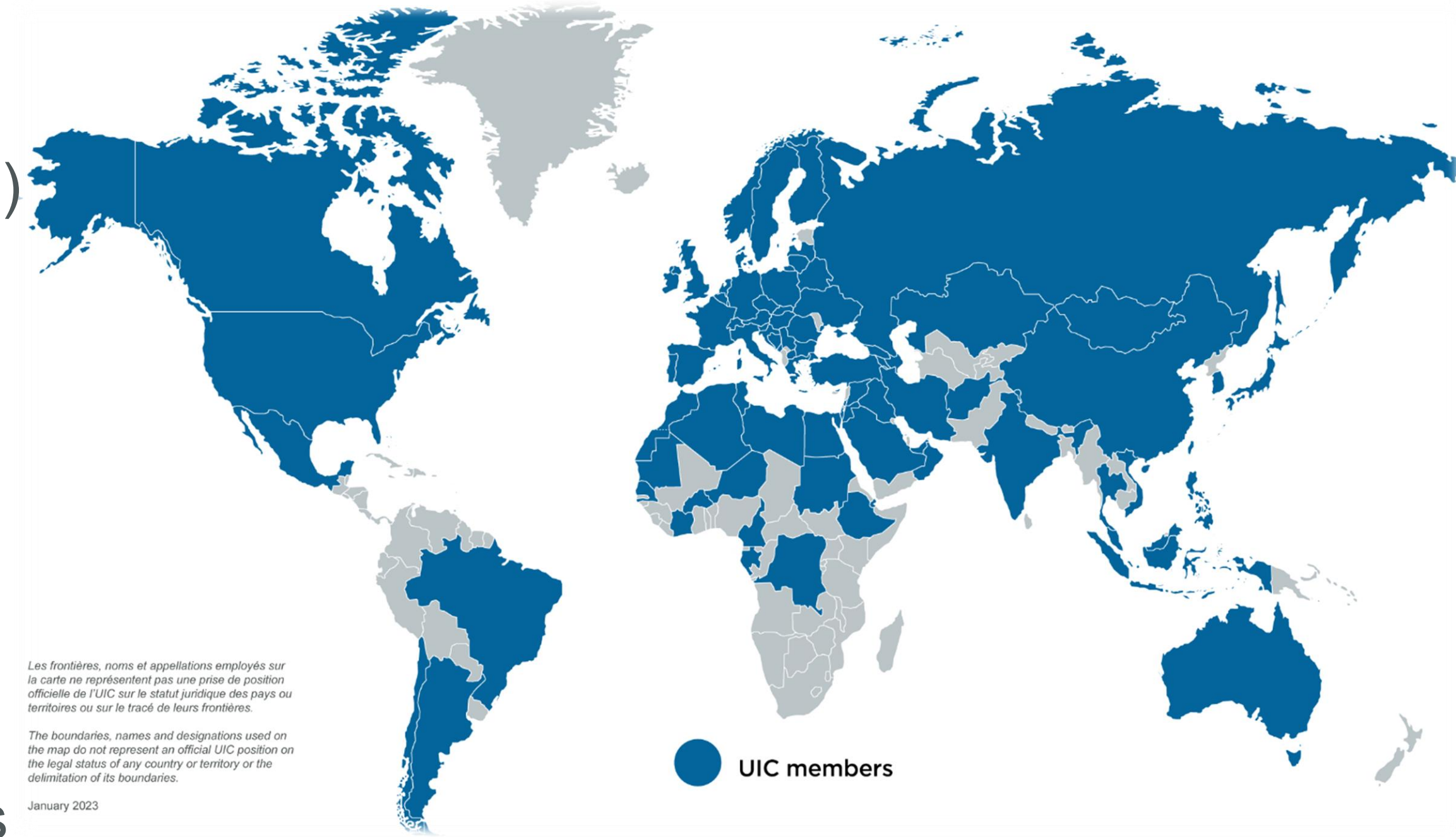
• **UIC members**

UIC counts ~200 members

140 railway companies (heavy rail: tram and metro excluded)

- ✓ Infrastructure managers
- ✓ Passenger operators
- ✓ Freight operators

(others >>> engineering groups, research institutes...)

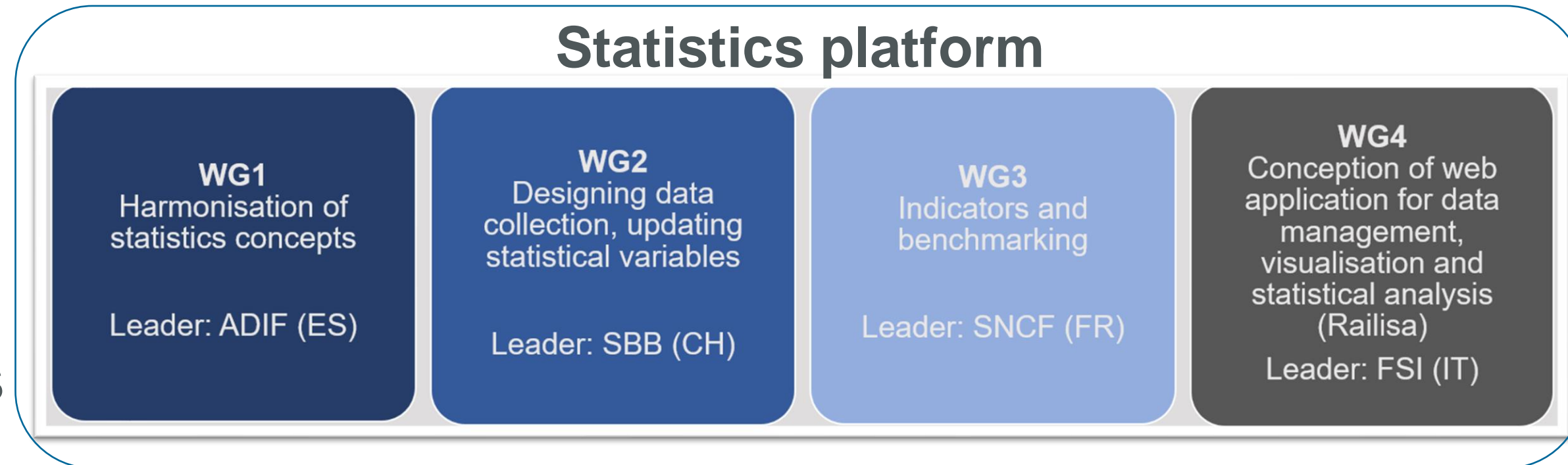


• **Statistics platform** for data exchange between members

Participants are representative of railways

4 permanent working groups

Data collected from operators and infrastructure managers



❑ Latest updates

- **Core statistics**

Freight and passenger traffic – Transport stock – Punctuality

Energy consumption – Accidents – High Speed

Financial results – Staff – Network

New data on engineering structures: bridges and tunnels on conventional and high speed lines

- **3 collections per year**

- ✓ Provisional data for 2022 KPIs –will be published in June
- ✓ Consolidated 2022 data – will be published in November
- ✓ Monthly traffic

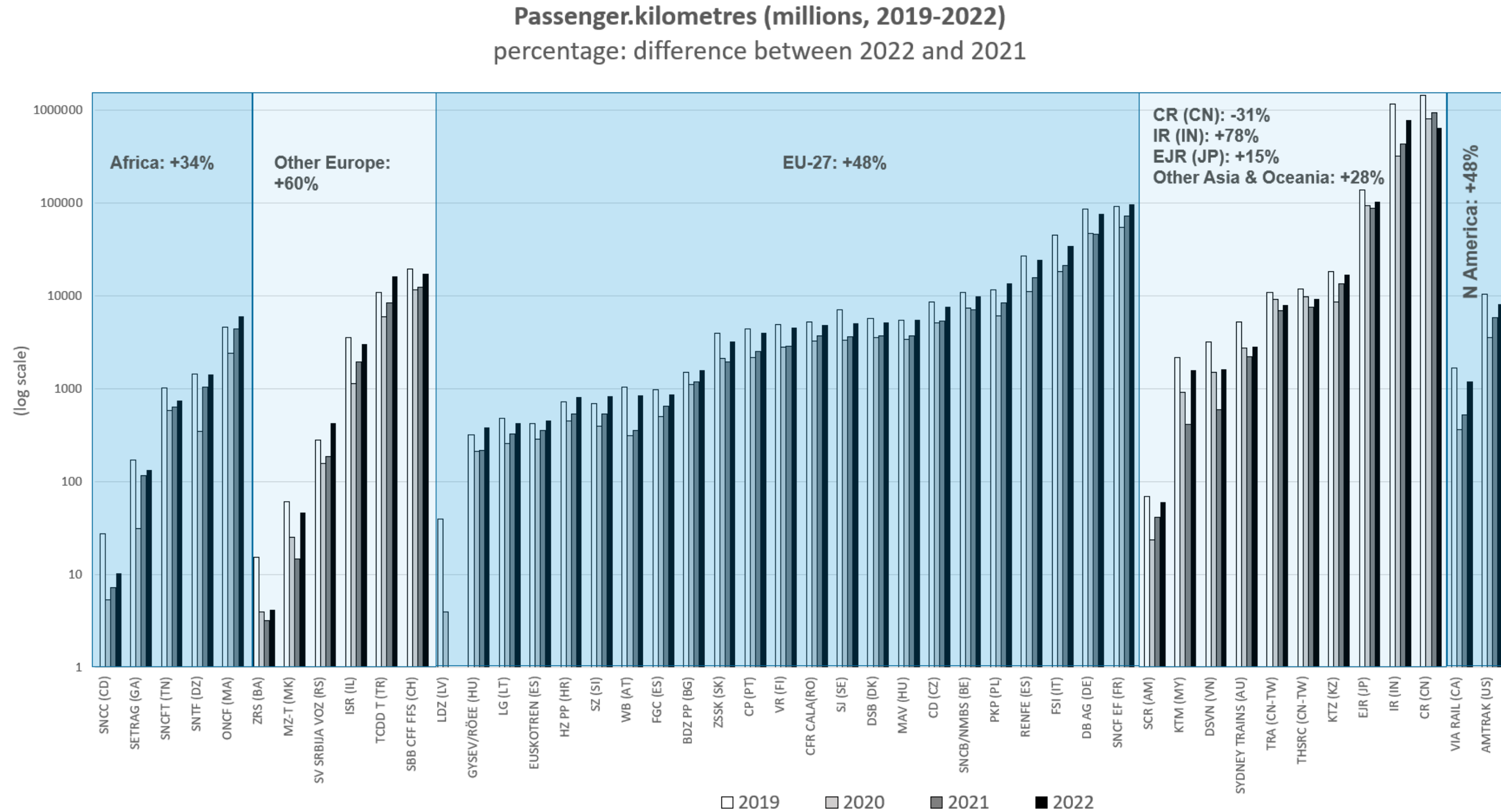
New participants: Trenes de Chile, Egyptian National Railways, Camrail (Cameroun)

Select year : 2022
Select a company : ADIF
Step 1 : data entry
Export to Excel

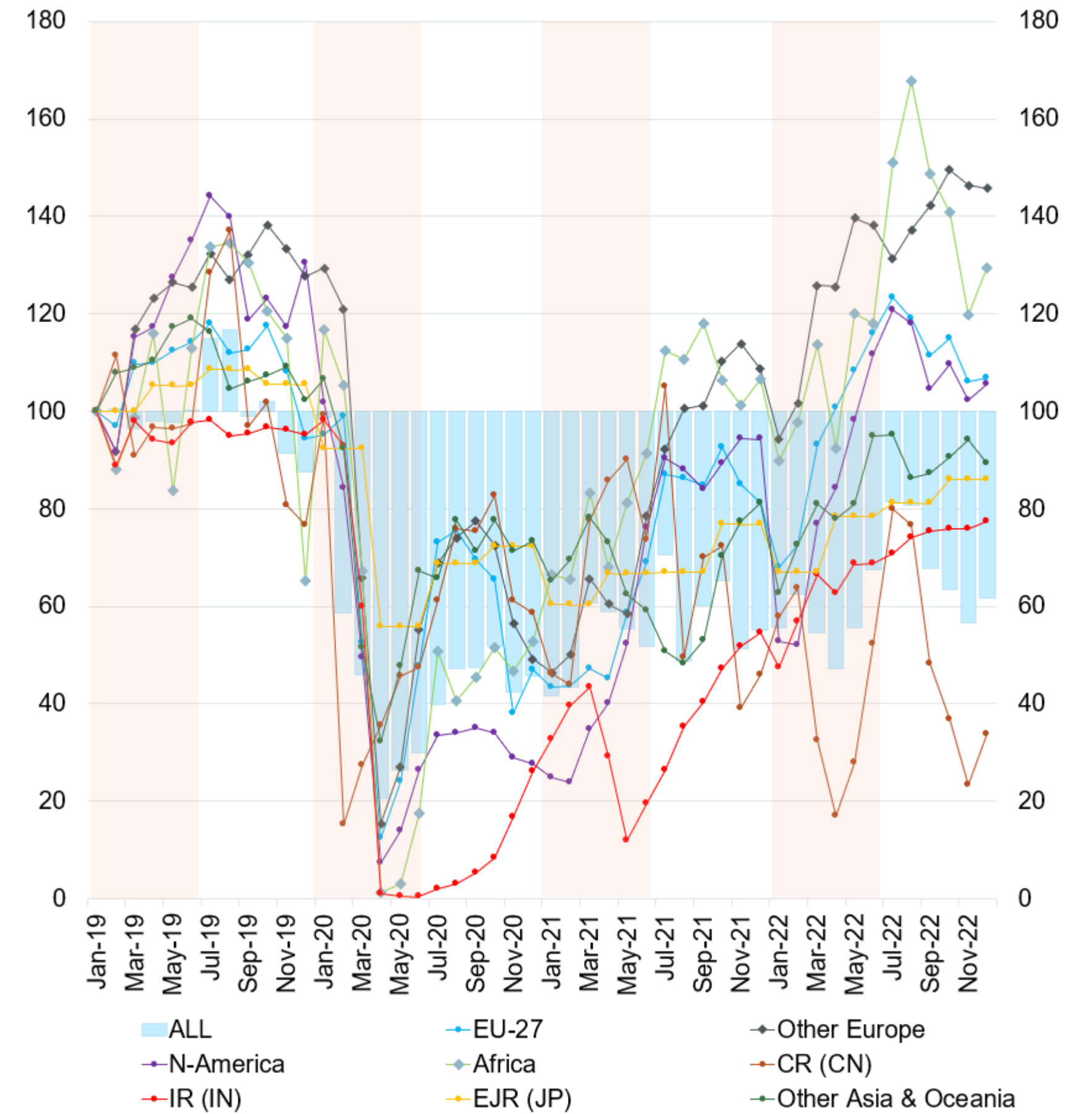
	Table	var_id	2021	2022 ?
Infrastructure				
Length of lines worked at the end of the year				
Lines not electrified (km)				
single track	11	1106	5473	5481
double track or more	11	1115	16	105
Electrified lines (km)				
single track	11	1116	4091	4217
double track or more	11	1111	6053	6017
Stations and level crossings				
Number of stations and stops for passenger traffic on the infrastructure manager's	14	1410	1495	1497

Rail traffic trend monitoring

- Passenger traffic 2019-2022

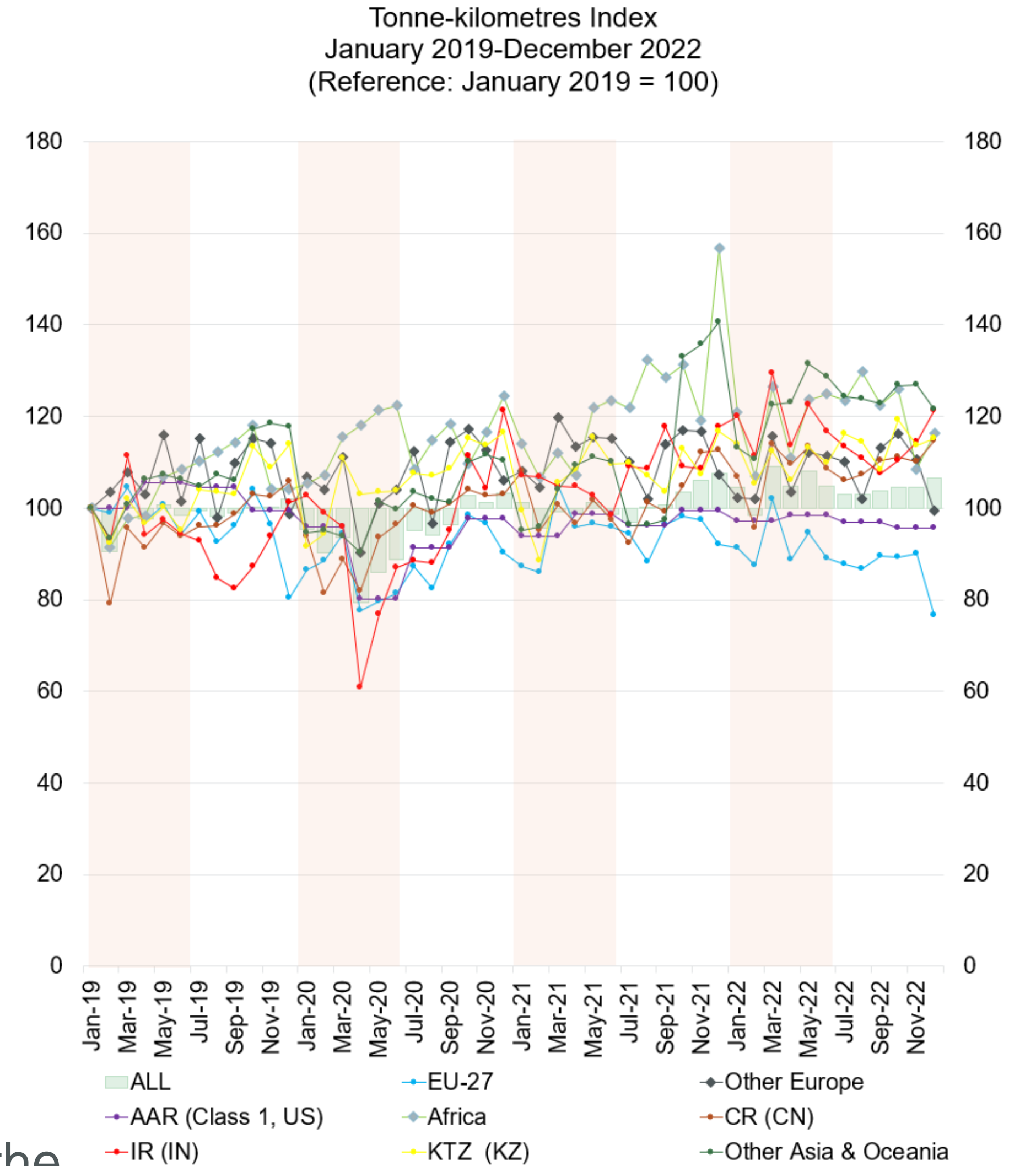
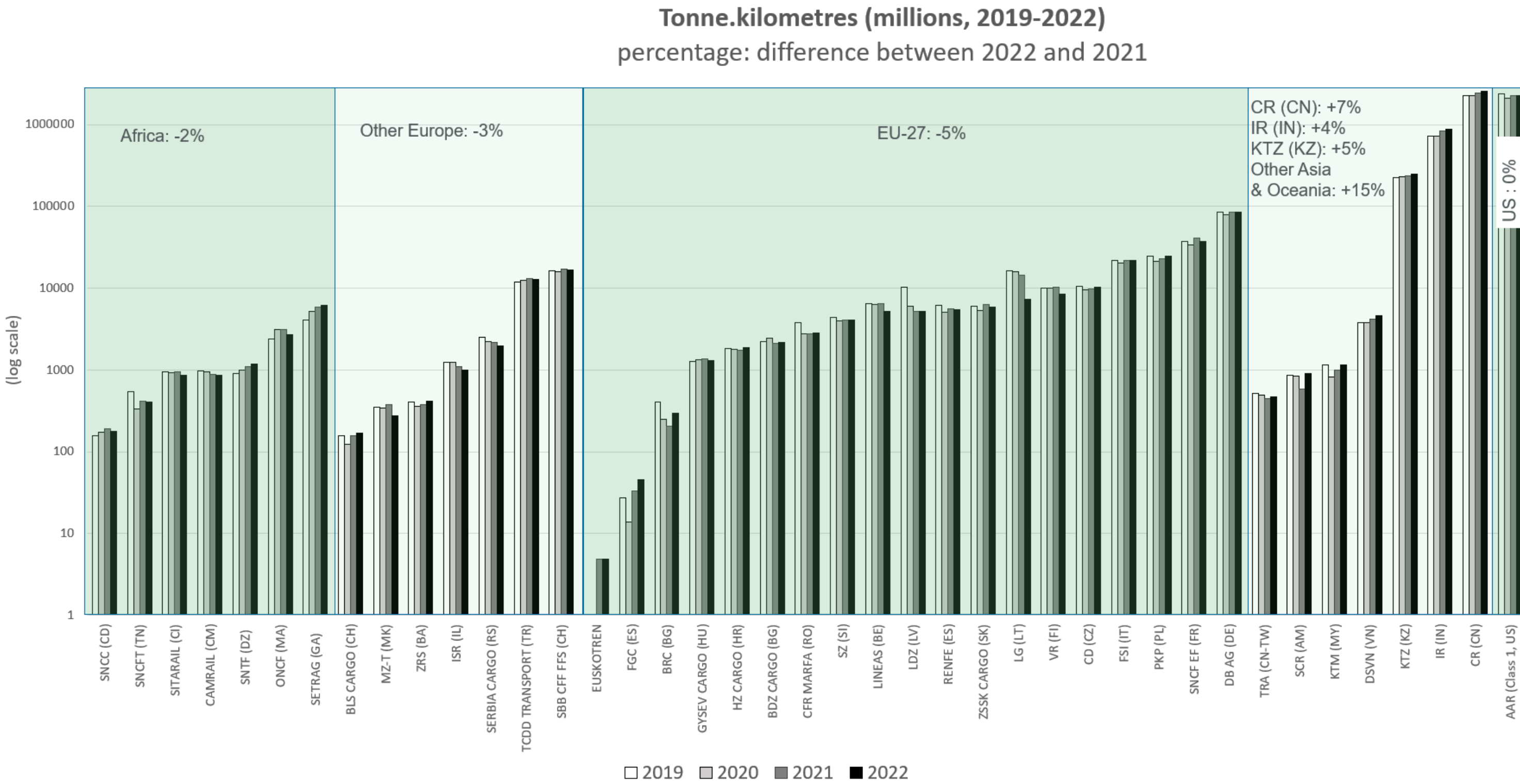


Passenger.kilometres Index
January 2019-December 2022
(Reference: January 2019 = 100)



During the second half of 2022, passenger traffic for many companies in Europe is in line with or even higher than in 2019 (pre-covid period)

• Freight traffic 2019-2022



For companies in the EU-27 region

- ✓ rebound of freight traffic in 2021
- ✓ but a downward trend in 2022 especially during the second half of the year (contraction of about 5% in tonne-kilometres).

❑ Data collected for sustainable development projects (1/3)

• Traction Energy and Emissions

Data collected from operators - **Electric** and **diesel** tractions

https://uic.org/IMG/pdf/202102_uic_1990-2030_environment_strategy_reporting_system.pdf

Energy consumption (tonnes of diesel, GWh of electricity)

CO₂-eq emissions (well to wheel)

PM and NO_x

✓ Passenger transport according to the type of train service:

- Suburban and regional
- Intercity
- High Speed

✓ Freight transport



<http://www.ecopassenger.org/>



<https://www.ecotransit.org/en/>

Performance indicators calculated by train.km, gross tonne.km, net tonne.km, passenger.km

❑ Data collected for sustainable development projects (2/3)

- **Rail sustainability Index: data collected for 7 key SDGs**



Qualitative and quantitative data (operators and infrastructure managers)

- ✓ Non-discrimination framework/code, Women by level of responsibility, Women in Governance bodies
- ✓ Energy consumption, share of renewable energy, Targets
- ✓ Total number of employees by employment contract, Health and safety policies/system
- ✓ Electrified lines, Climate-related risks, Rail infrastructures and climate change
- ✓ Rail accidents
- ✓ Sustainable procurement clauses, Hazardous waste, Reused/recycled waste, Sustainability reporting, Environmental management system
- ✓ CO2-eq emissions direct and indirect, Green bond/debt ratio, Board-level oversight of climate-related issues, Emission targets, Collaborating with governments



□ Data collected for sustainable development projects (3/3)

- Significant accidents

<https://uic.org/safety-database>

Company	Country	Code
ADIF	Spain	ES
Bane NOR SF	Norway	NO
CANADA ³	Canada	CA
CFL	Luxembourg	LU
CFR SA	Romania	RO
CIE	Ireland	IE
DB AG ²	Germany	DE
EUSKOTREN	Spain	ES
FGC	Spain	ES
FTIA	Finland	FI
HZ	Croatia	HR
Infrabel ²	Belgium	BE
Infrakos	Kosovo	XK
IP	Portugal	PT
KRRI	South Korea	KR
LTG	Lithuania	LT
MÁV	Hungary	HU

Company	Country	Code
NRIC	Bulgaria	BG
ÖBB	Austria	AT
OSE	Greece	GR
PKP	Poland	PL
PRORAIL ¹	Netherlands	NL
RAI	Iran	IR
RFI	Italy	IT
RSSB ²	United Kingdom	GB
SAR	Saudi Arabia	SA
SBB CFF FFS ²	Switzerland	CH
SNCF Réseau ²	France	FR
SŽ (si)	Slovenia	SI
SŽ (cz)	Czechia	CZ
TCDD	Turkey	TR
Trafikverket ²	Sweden	SE
ŽSR	Slovakia	SK

¹ Chair and ² Members of the Safety Performance Group

³ All infrastructure managers. Data extracted from the TSB website: www.tsb.gc.ca/fra/stats/rail/data-5.html

Data collected from infrastructure managers

- ✓ Accidents - fatalities - casualties
- 25 variables + additional questionnaires

TOTAL	Number of accidents					Number of fatalities					Number of fatalities					Number of casualties					Number of casualties		
	Collisions	Derailments	of persons caused by rolling stock in motion	at level crossings	Other	Passengers		Railway employees		Other persons		Total			Passengers		Railway employees		Other persons		Total		
						Collisions and derailments	Other	Collisions and derailments	Other	Collisions and derailments	Other	Collisions and derailments	at level crossings	of persons caused by rolling stock in motion	Other	Collisions and derailments	Other	Collisions and derailments	Other	Collisions and derailments	Other	Collisions and derailments	at level crossings

- ✓ Level crossings (automatic, manual, protection, warning...)
- 9 variables

Active LC											Passive LC	Total LC	Change to previous year
Automatic LC					Manual LC								
User side warning	User side protection	User side warning and protection	User side warning & protection + rail side protection	User side warning & rail side protection	Total automatic LC	User side warning	User side protection	User side warning and protection	User side warning and protection+ rail side protection	Total manual LC	Total active LC		

✓ 2022 Global Rail Sustainability report

<https://uic.org/IMG/pdf/global-rail-sustainability-report-2022.pdf>

<https://uic.org/sustainability>



Contact:
Isabelle De Keyzer
Adviser Rail Sustainability Index & Circular Economy
dekeyzer@uic.org
rsi@uic.org

Snejana Markovic-Chenais
Adviser Rail Sustainability Index & External costs
markovic@uic.org

✓ UIC Safety Report 2022

https://safetydb.uic.org/IMG/pdf/uic_safety_report_2022.pdf

<https://uic.org/safety/safety-performance-group-safety-database/>



Special focus on the COVID 19 pandemic

UIC SAFETY UNIT
UIC Safety Report 2022
Significant Accidents 2021
Public Report

October 2022

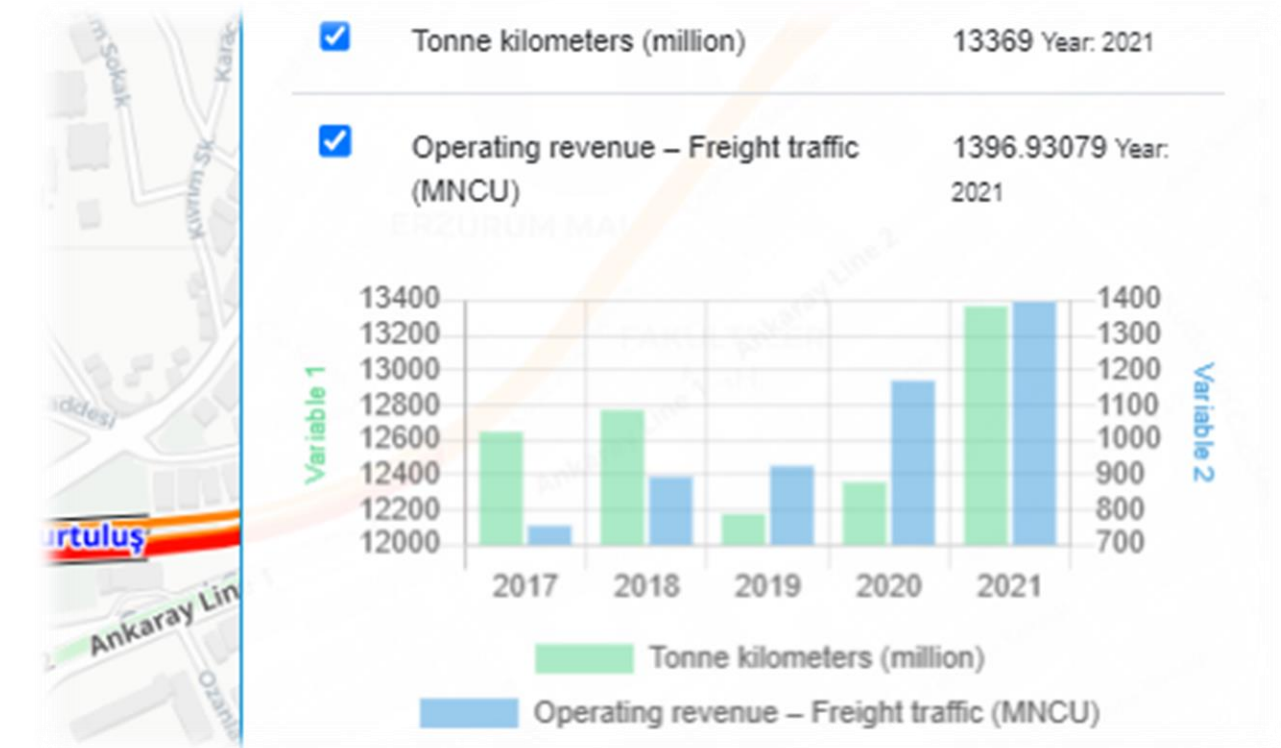
Contact:
safety@uic.org



✓ Data provided by railway companies

<https://uic-stats.uic.org/select/>

<https://uic.org/support-activities/statistics/>



Contact:
Alice Favre
Head of Statistics Unit
favre@uic.org
stat@uic.org