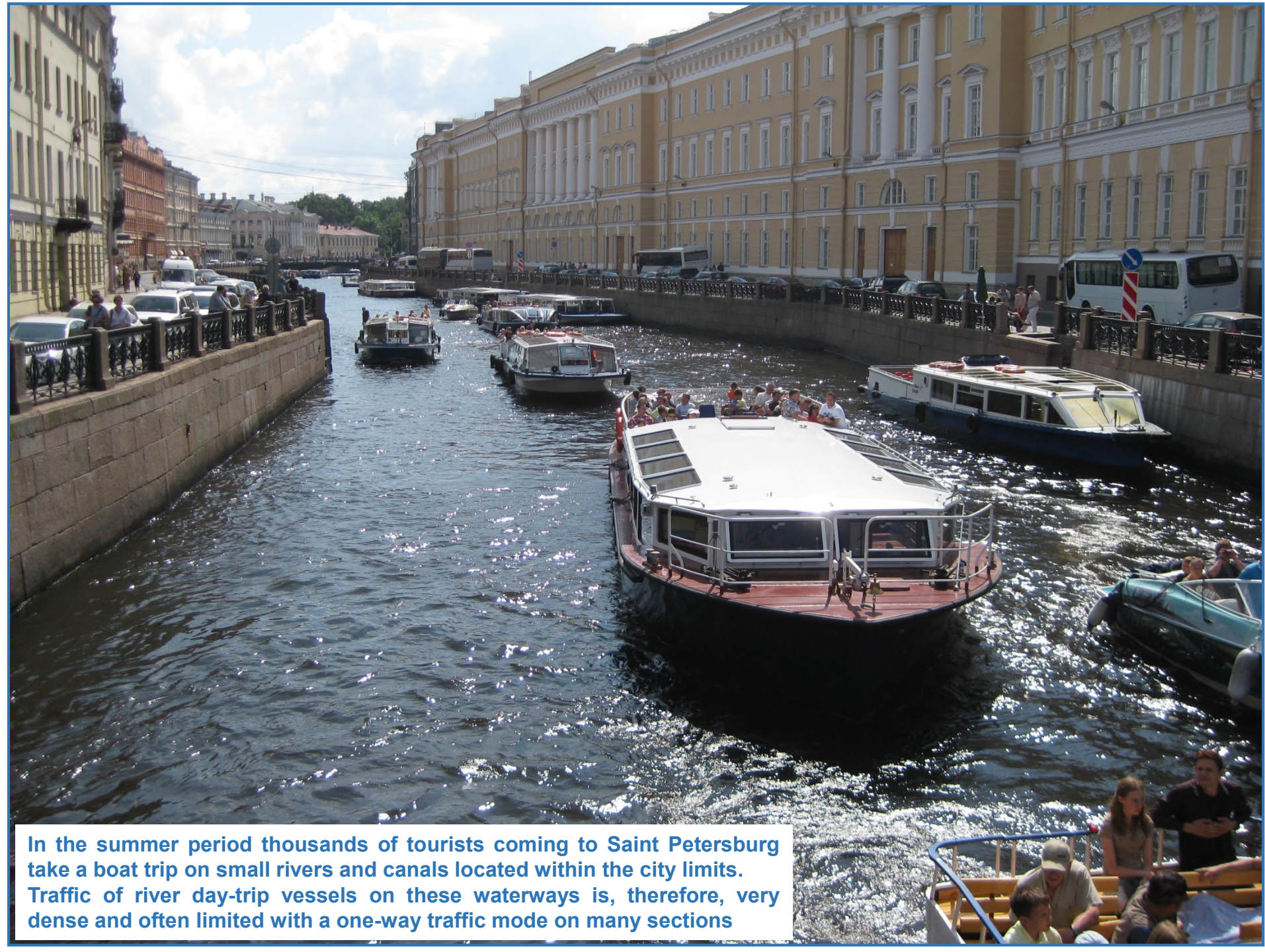


Traffic management of river day-trip vessels in Saint Petersburg, Russia



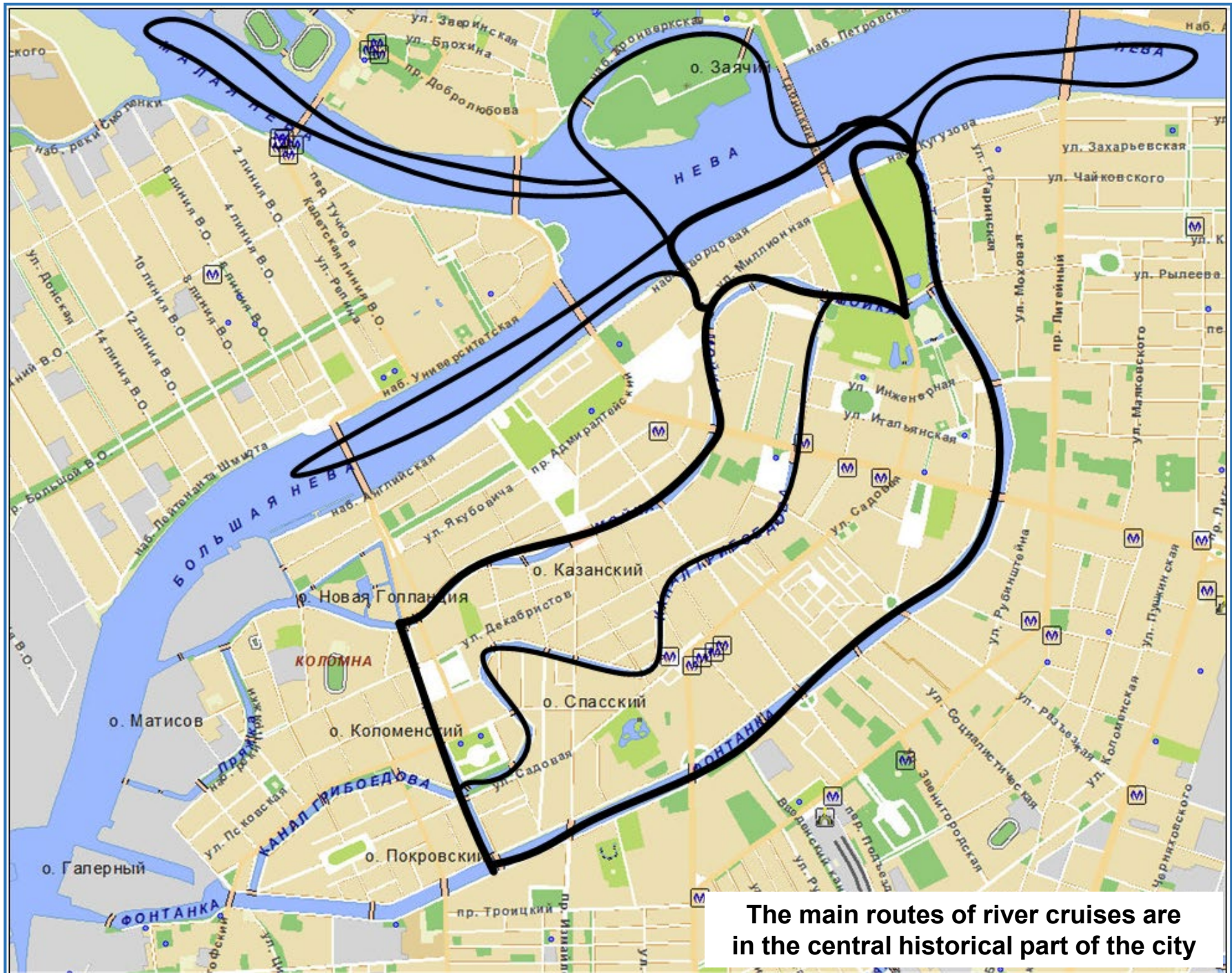
Sixty-third session of the Working Party
on Inland Water Transport (SC.3).
Geneva, 6-8 November 2019



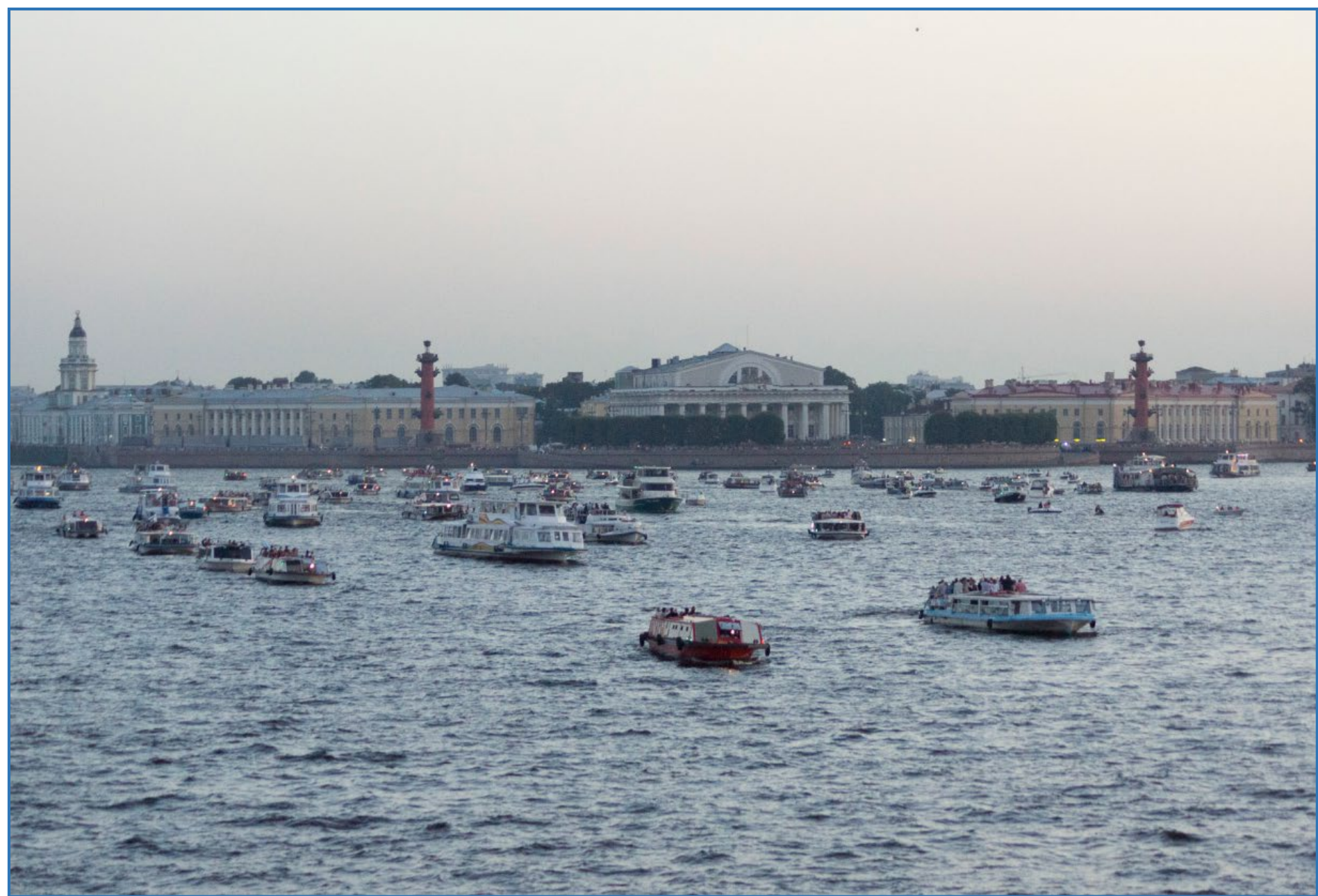
In the summer period thousands of tourists coming to Saint Petersburg take a boat trip on small rivers and canals located within the city limits. Traffic of river day-trip vessels on these waterways is, therefore, very dense and often limited with a one-way traffic mode on many sections



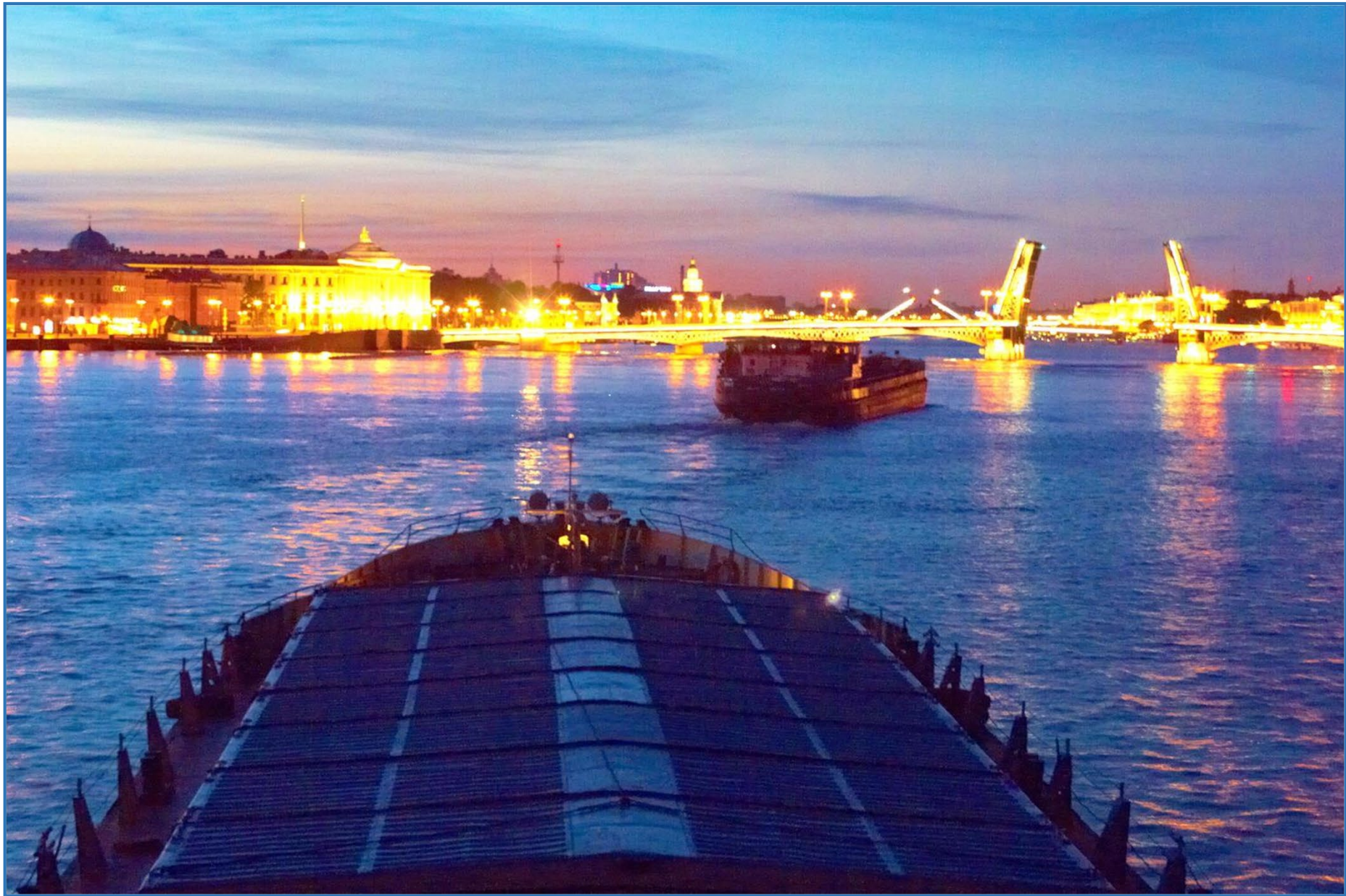
Similar river cruises are also very popular in Amsterdam, Paris, Strasbourg, Bruges etc.



The main routes of river cruises are in the central historical part of the city



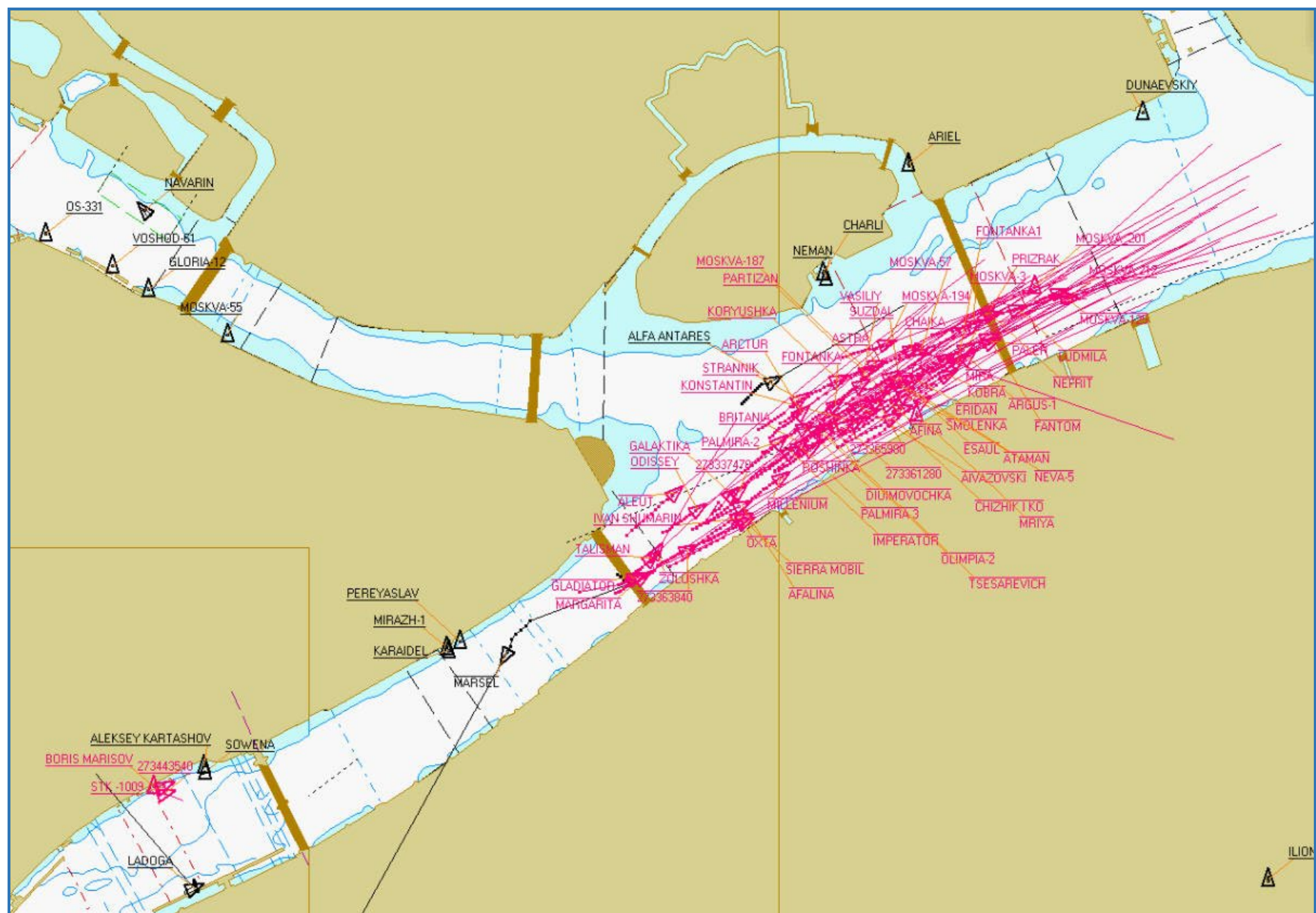
Once a summer evening in Saint Petersburg...



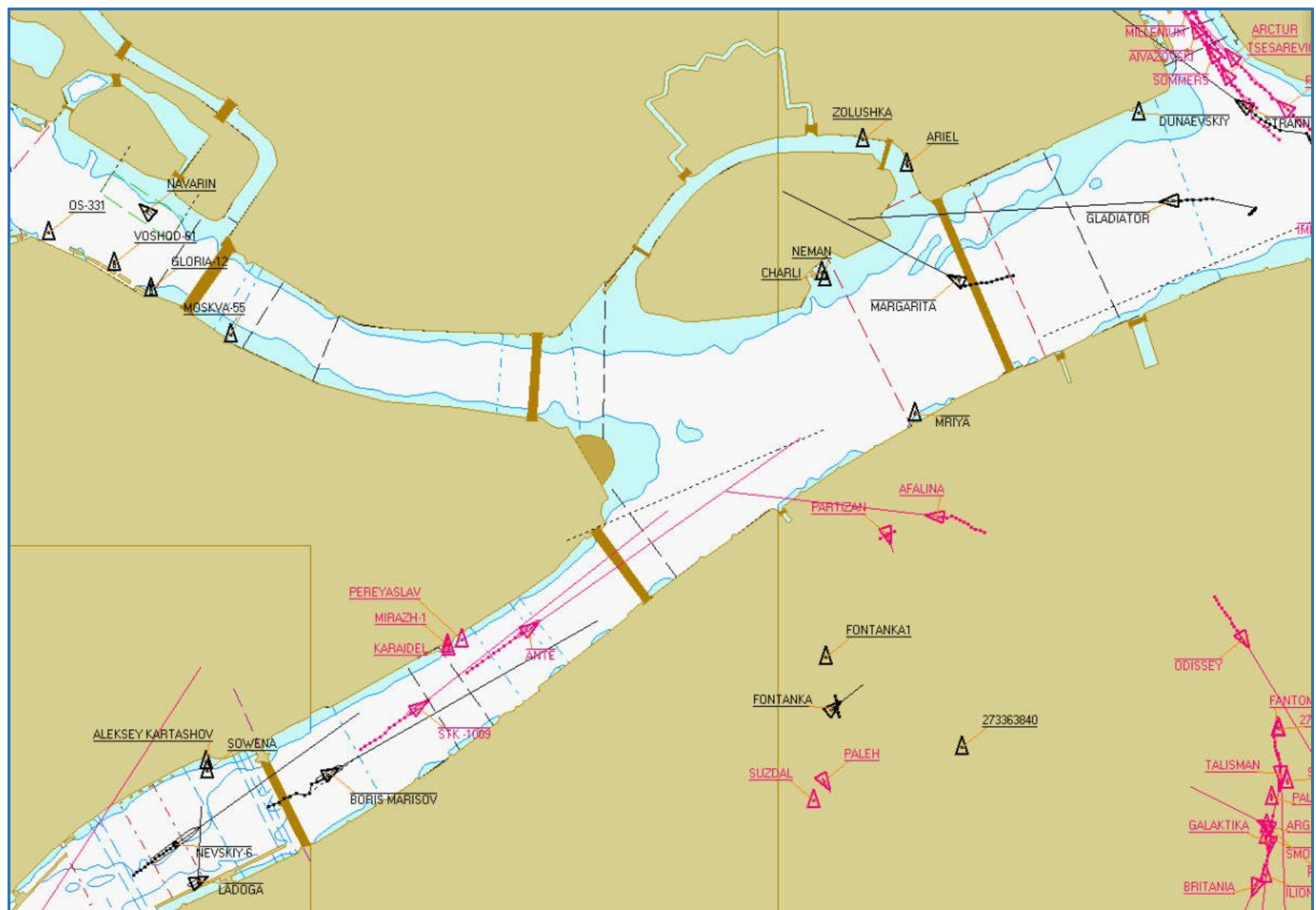
Small day-trip vessels are especially dangerous at nighttime during the passage of large vessels through the drawbridges on the main fairway of Neva river



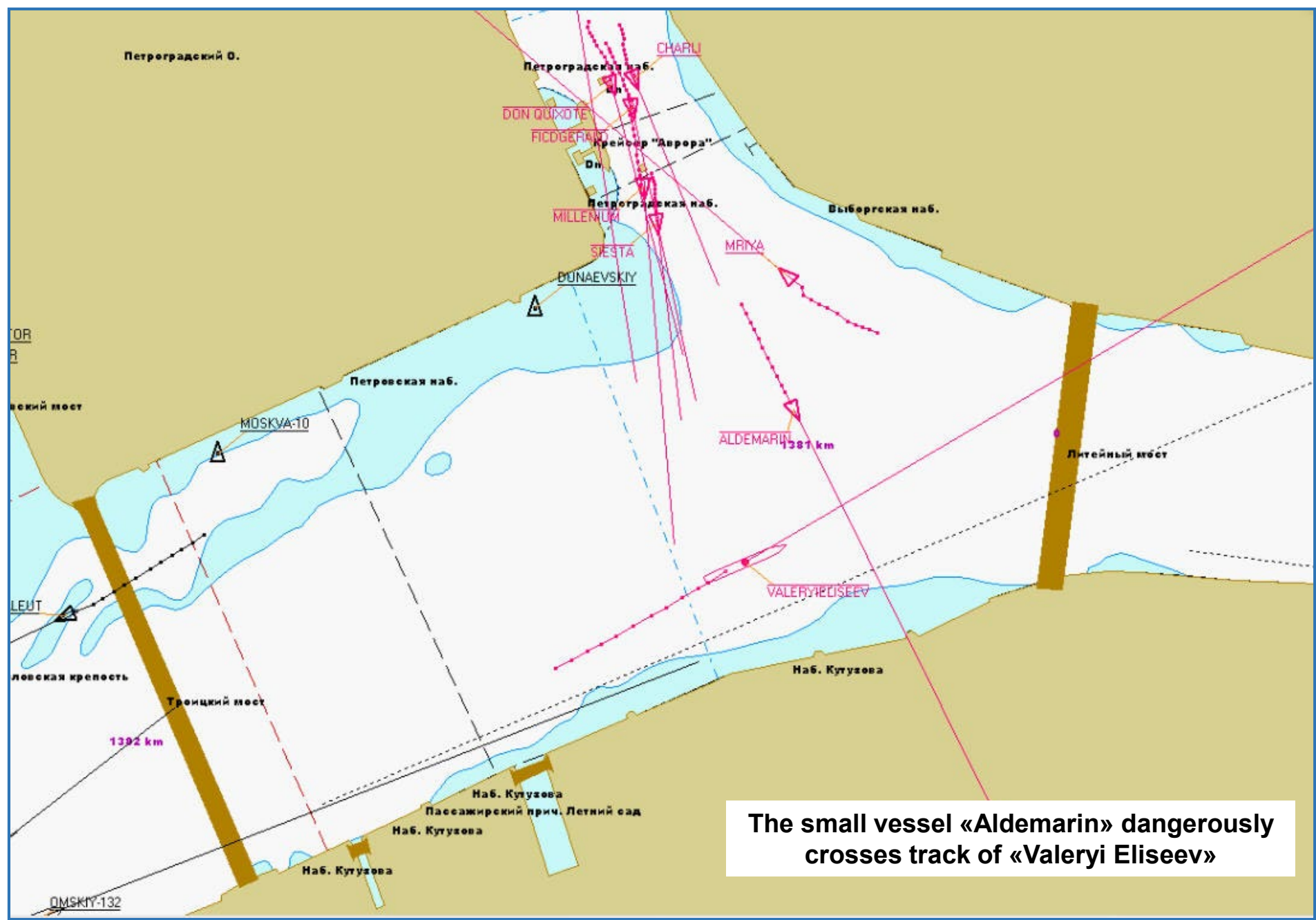
Hundreds of tourists are watching at night bridge openings from small vessels



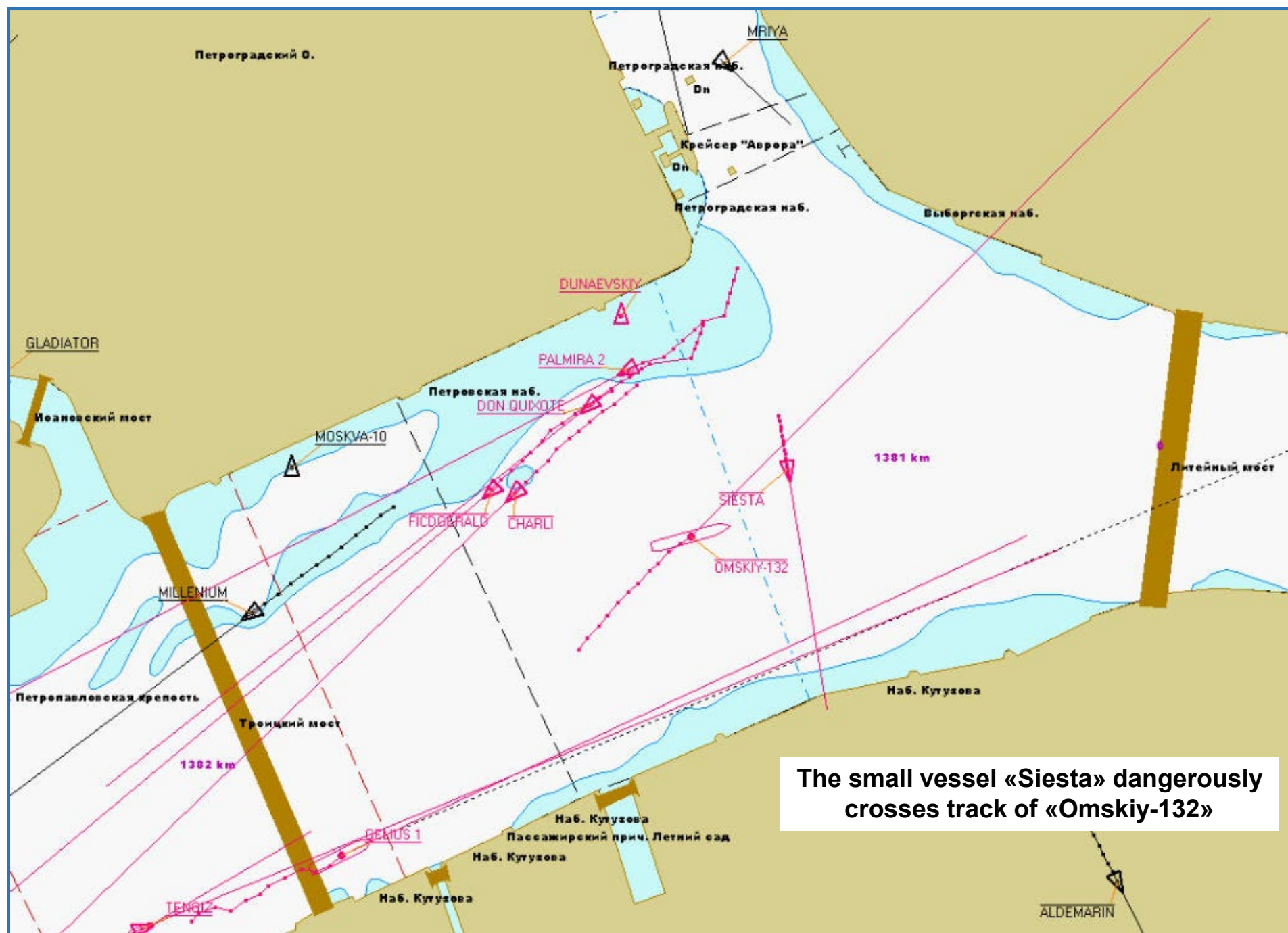
10 minutes before start of the upstream night traffic of large vessels.....



The upstream traffic starts. It seems, the fairway is clear, but



The small vessel «Aldemarin» dangerously crosses track of «Valeryi Eliseev»



The small vessel «Siesta» dangerously crosses track of «Omskiy-132»



Inland Waterway Administration



A vessel, subject to the requirements of the Russian River Register, must be equipped with stationary UHF-radio and AIS transponder



An undersized vessel, not subject to the requirements of the Russian River Register, must be equipped only with handheld UHF-radio

Many questions have to be put Many problems need to be solved

- **Are there any special legal acts regulating navigation of river day-trip vessels on rivers and canals in urban areas ?**
- **Is there a special authority responsible for organizing and managing traffic of river day-trip vessels and safety of navigation on smaller rivers and canals in urban areas ?**
- **Is there a special authority responsible for the maintenance of the fairway, AtoNs, mooring equipment, navigation signs and signals, semaphores, boards that allow, restrict or prohibit navigation?**
- **Are there any limitations for the traffic density on smaller rivers and canals in urban areas (maximum number of vessels on the same waterway section)?**
- **How operators are informed about the under-bridge clearance on smaller rivers and canals?**
- **Is there a dedicated radio communication channel for river day-trip vessels?**
- **Is there an obligation to report via VHF radio on the start and end of the voyage? If "YES", whom this message should be transmitted to ?**

Thank you for your
kind attention !



Evgeny Brodskiy
Telecom Dept. of the Volga-Baltic Waterway
Saint-Petersburg, Russian Federation

brodsky@volgo-balt.spb.ru