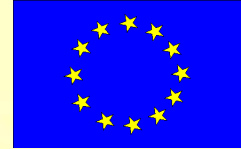


Road Sector Development in the Republic of Moldova





Road infrastructure



Road network

Public roads 10537 km including:

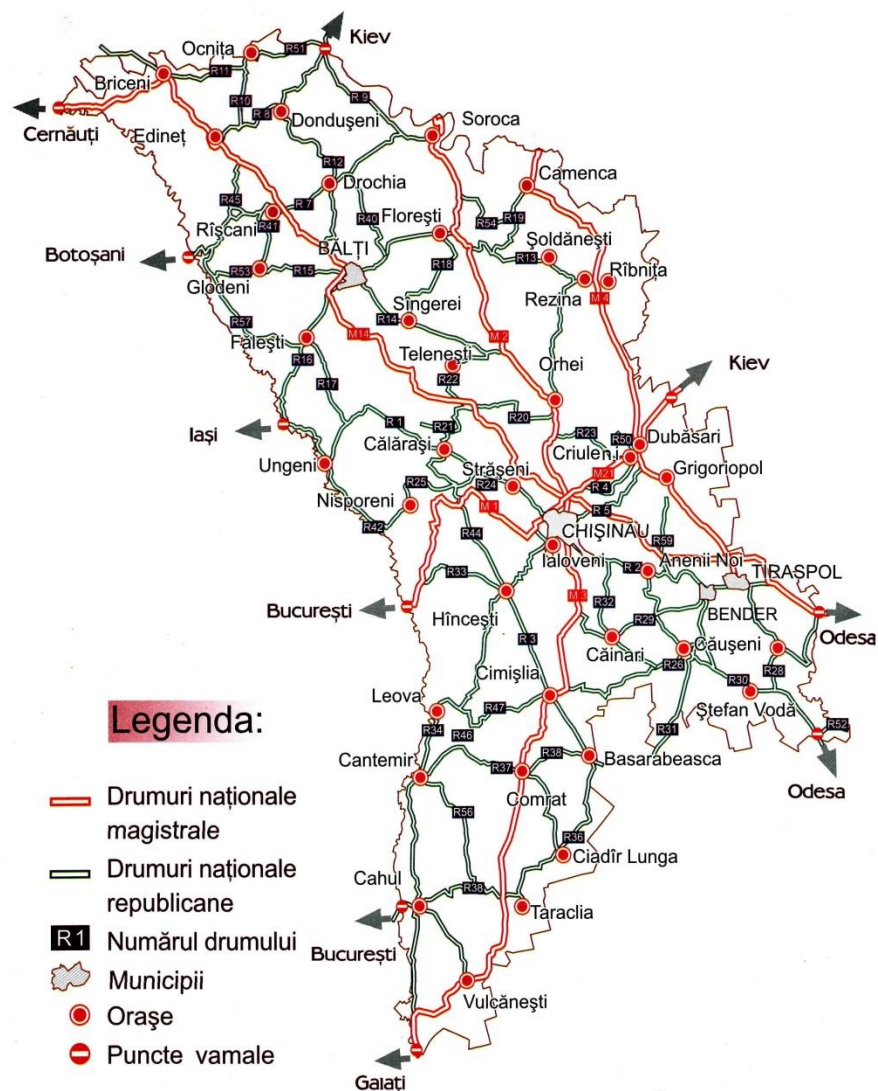
**National roads 3670 km,
including:**

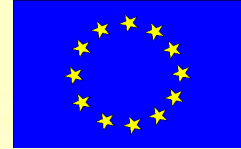
Asphalt pavement	2973 km
Concrete pavement	437 km
Macadam	261 km

Local roads 6867 km,

Asphalt pavement	3064 km
Concrete pavement	46 km
Macadam	3756 km

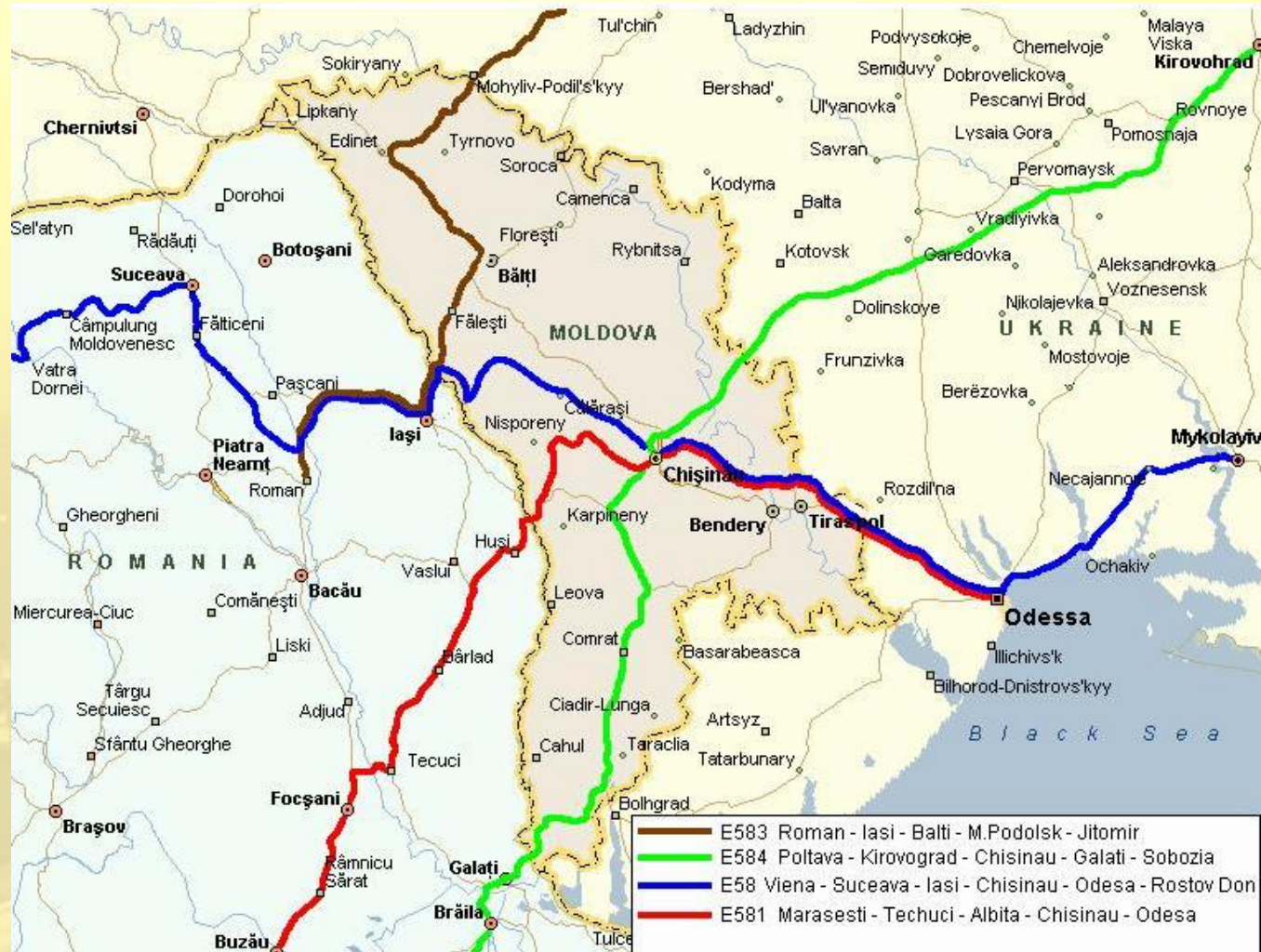
Schema rețelei drumurilor naționale



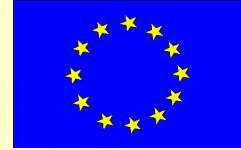


Infrastructure development and improving the connection with European Transportation Networks

Euro-Roads (AGR)



European Agreement on the great international roads (AGR) Republic of Moldova
Law nr. 17-XVI, 10.02.2006



Pan European Network

- **Corridor VII Danube River**
- **Corridor IX Helsinki-S.Peterburg-Pskov-Moscova-Kiev-Ljubase-Chişinău-Bucureşti-Dimitrovgrad-Alexandropolis**

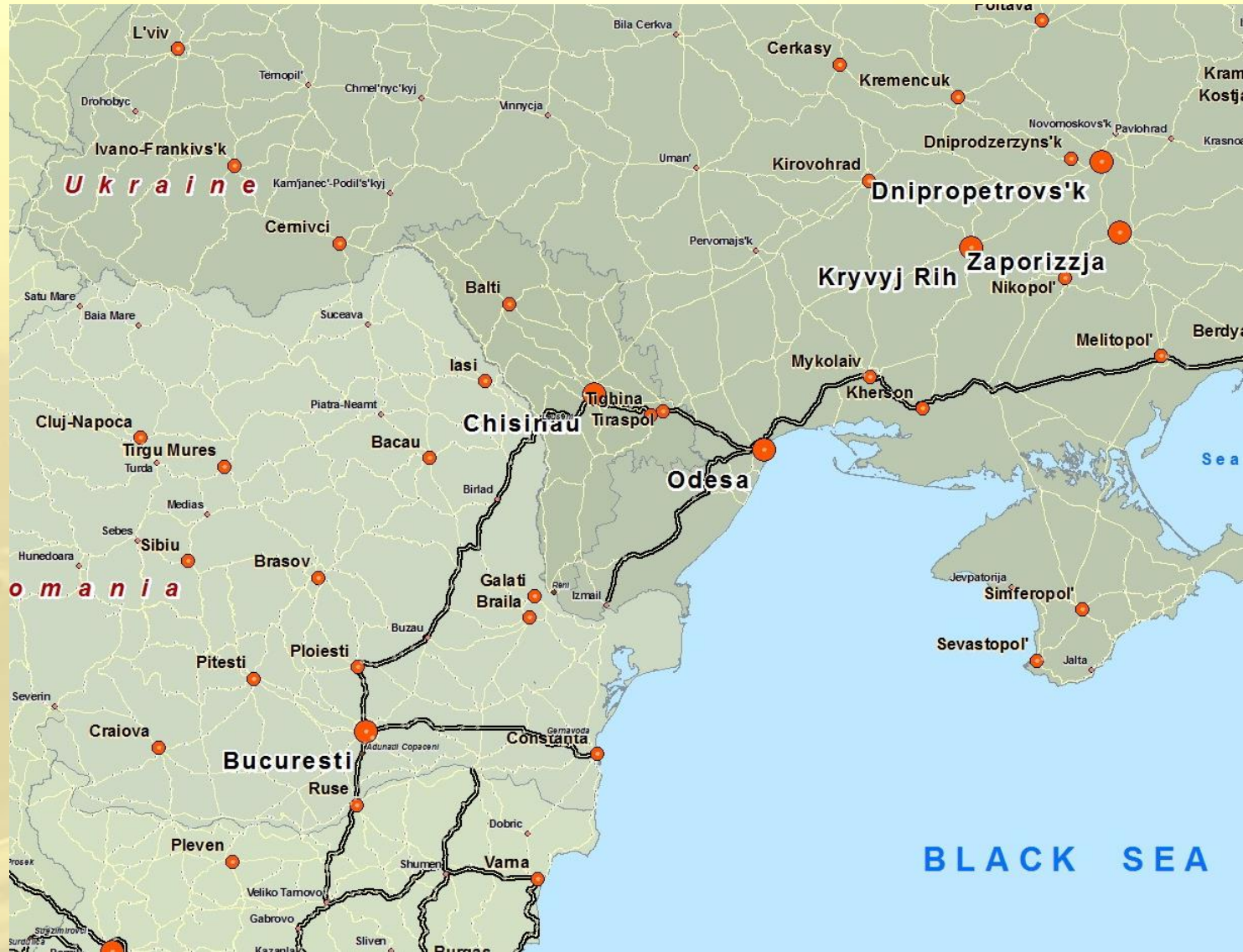


Pan European transport conference, Crete 1994



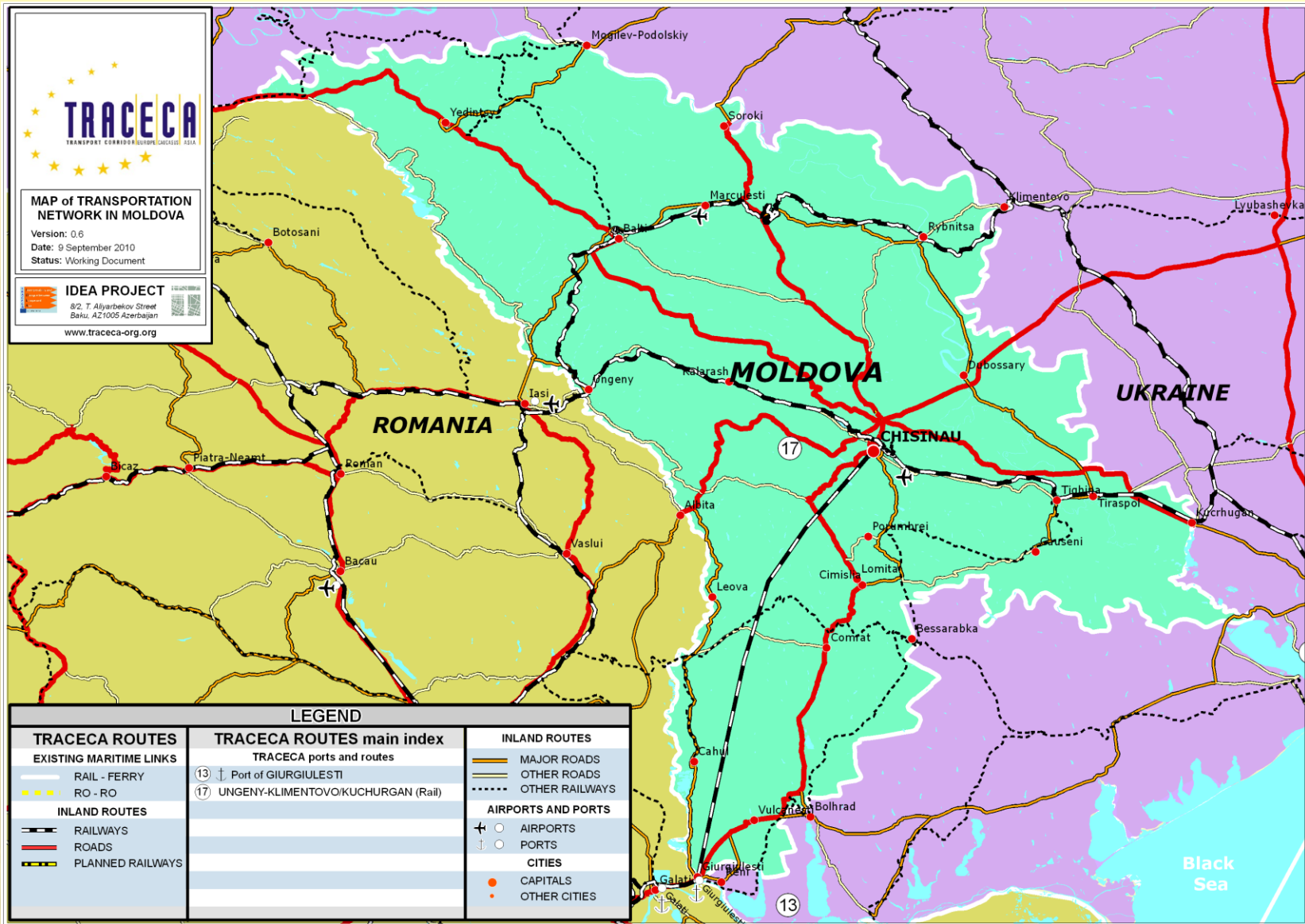
Black Sea Ring Highway

Memorandum
on the Black
Sea Ring
Highway, 27
of July 2007





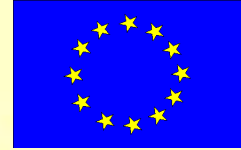
MULTIMODAL CORRIDOR EUROPE - CAUCASUS - ASIA (TRACECA) – (Conference in Brussels, 1993)





Connection of the national network to the TRANS-EUROPEAN NETWORKS Transport (TEN-T)



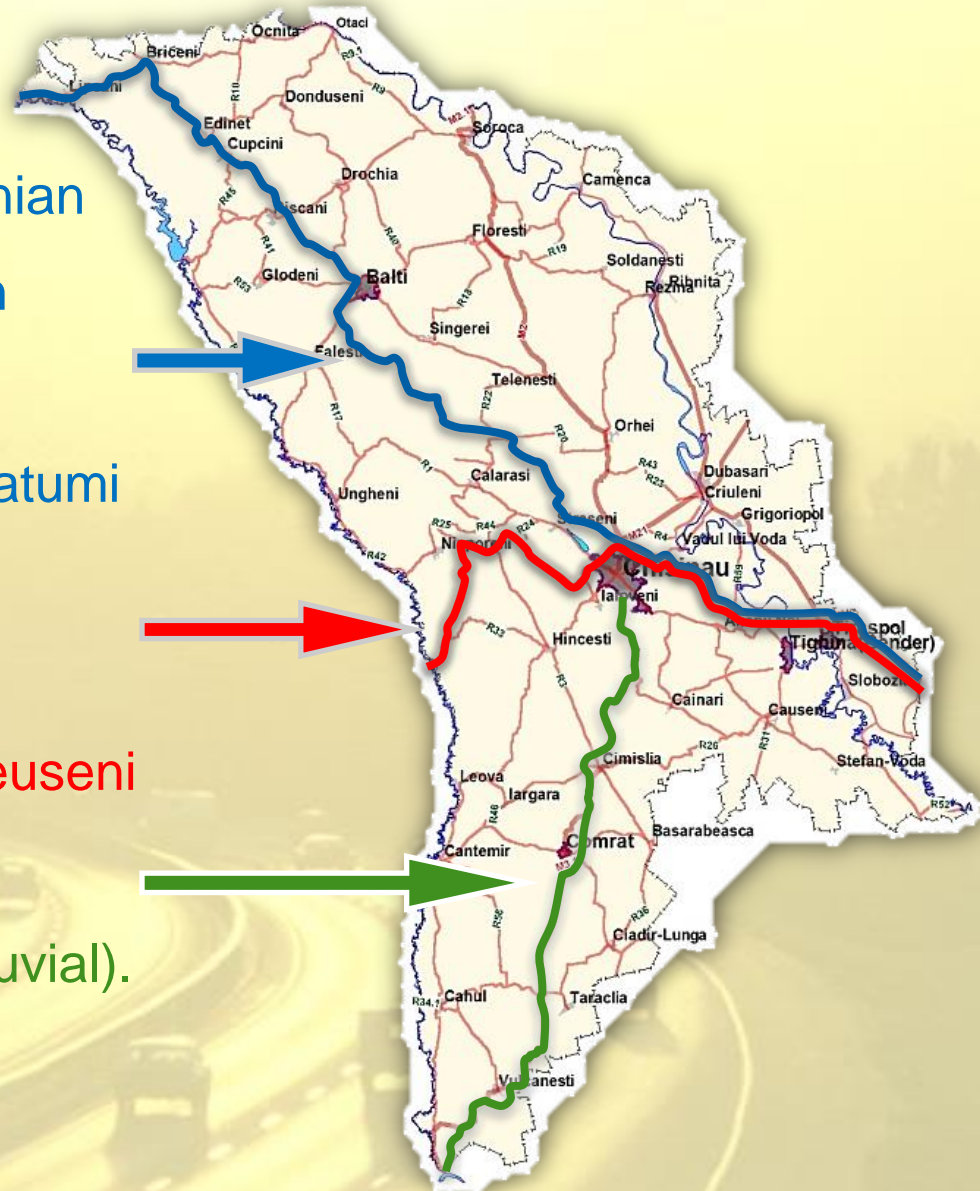


Euro-Asian Transport Linkages

4i Brest – terit. Belorusia – Ukrainian border- terit. Ukraine – Moldavian border – Chisinau – Odesa (port)/Ilicevsc(port) – Poti(port)/Batumi (Port);

4b Ruse – Giurgiu – Bucuresti- Urziceni – Marasesti – Albita – Leuseni – Chisinau – Odesa;

4k Chisinau – Giurgiulesti (port fluvial).



Program for Road Rehabilitation Projects Funded by External Donors 2013-2016

No.	Drum	Finanțare	Lungime km	Cost mil. EUR	Perioada de Executare
1. Contracte în derulare					
1.1.	M2 Chișinău-Soroca	BERD	28,6	13,6	2011-2013
1.2.	M2 Chișinău-Soroca	BEI	16,3	4,8	2011-2013
1.3.	R3 Chișinău-Hîncești	BEI	8	8,7	2011-2012
1.4.	R14 Bălți-Sărăteni	CE NIF	19	9,6	2011-2013
1.5.	R14 Bălți-Sărăteni	CE MSG	4,7	2,5	2011-2013
1.6.	M2 Chișinău-Soroca	BEI	20,5	9,2	2012-2013
1.7.	M3 Chișinău-Giurgiuțești	BERD	26	11,9	2012-2014
1.8.	M3 Chișinău-Giurgiuțești	BERD	28,4	12,7	2012-2014
1.9.	M2 Chișinău-Soroca	MCC	24,2	21,3	2012-2014
1.10.	M2 Chișinău-Soroca	MCC	20,6	19,1	2012-2014
1.11.	M2 Chișinău-Soroca	MCC	23,2	14,9	2012-2014
1.12.	M2 Chișinău-Soroca	MCC	24,5	20,5	2012-2014
Subtotal			244	148,8	
2. Contracte în curs de achiziție					
2.1.	R1 Chișinău-Ungheeni	BEI	17,6	25	2013-2015
2.2.	R1 Chișinău-Ungheeni	BEI	44,2	35	2013-2015
2.3.	R1 Chișinău-Ungheeni	CE NIF	7,8	10	2013-2015
2.4.	M3 Chișinău-Giurgiuțești	BERD	31,2	25	2013-2015
2.5.	R1 Chișinău-Ungheeni	BERD	22	19	2014-2015
2.6.	R33 Hîncești-Lăpușna	BERD	37,2	23	2014-2015
Subtotal			160	137	
3. Contracte cu finanțare din acordurile financiare semnate în iunie 2013					
3.1.	M3 Slobozia-Mare bypass	BERD	20,5	23,65	2014-2016
3.2.	R14 Bălți-Sărăteni	BERD	35,4	39,22	2014-2016
3.3.	R9 Soroca-Arionești	BERD	31	16,86	2014-2016
3.4.	R34 Hîncești-Leova	BERD	83	56,8	2015-2016
3.5.	R16 Bălți-Fălești-Sculeni	BEI	54,7	37,7	2014-2016
3.6.	R6 Chisinau bypass	BEI	6,6	10,1	2014-2016
3.7.	M1 Chișinău bypass	BEI	8	17,2	2015-2016
3.8.	M21 Chișinău bypass	BEI	8,3	25,7	2015-2016
3.9.	M3 Porumbeni-Cimișlia	BEI	26,2	38	2014-2016
3.10.	M3 Comrat bypass	EIB	18	17	2014-2016
3.11.	R1 Bahmut bypass	CE NIF	5,7	6,1	2014-2015
3.12.	M3 Vulcanesti bypass	CE NIF	8,6	9	2014-2015
Subtotal			306	297,33	
Din care planificate a fi licitate în septembrie 2013					
3.2.	R14 Bălți-Sărăteni	BERD	35,4	39,22	2014-2016
3.6.	R6 Chisinau bypass	BEI	6,6	10,1	2014-2016
3.11.	R1 Bahmut bypass	CE NIF	5,7	6,1	2014-2015
3.12.	M3 Vulcanesti bypass	CE NIF	8,6	9	2014-2015
4. Contracte cu finanțare neidentificată					
4.1.	R13 Bălți-Gura Camencii		40	33,5	
4.2.	R34 Cantemir-Cahul		41,8	27,6	
4.3.	R3 Hîncești-Cimișlia		38,8	24	
Subtotal			120,6	85,1	
TOTAL			830,6	668,23	





EATL Road rehabilitation

Priority sections with unidentified financing presented to EU within TRACECA and Central Axis Corridors

Was implemented surface treatment

Was rehabilitated in 2008-2009

Is in good condition

Realizing with the EBRD, EIB assistance until 2014 -2017





THANK YOU

Mindra Nicolai

**Senior Adviser of Road Development Department
Ministry of Transport and Road Infrastructure**

Nicolae.mindra@mtid.gov.md