

Distr.: General  
1 September 2014

English only

---

## **Economic Commission for Europe**

Inland Transport Committee

### **Working Party on Transport Trends and Economics**

**Twenty-seventh session**

Geneva, 8–10 September 2014

Item 3 (d) of the provisional agenda

**Workshop on “Transport Trends and Economics in  
Mediterranean region: haring experiences among  
EuroMed and UNECE countries” –**

**Transport Trends and Economics: Cases from ECE region**

## **Transport trends in Sweden**

**Note by the Transport Analysis Agency**



**Transport trends in Sweden** **UNECE WP.5**  
**27th session**

**[www.trafa.se](http://www.trafa.se)** **Krister Sandberg**

**[krister.sandberg@trafa.se](mailto:krister.sandberg@trafa.se)**

# Contents

- Organisation of the Swedish transport sector
- Infrastructure
- Transport policy objectives
- Some transport news in Sweden

# Organisation of the Swedish transport sector

RIKSDAGEN (Swedish Parliament)

GOVERNMENT

Ministry of Enterprise, Energy and Communications

Elordh April 2000

Swedish  
transport  
agency

Regulation  
Control

Swedish inst. for  
Transport  
analysis

Analysis  
Evaluation  
Statistics

Swedish transport  
administration

Infrastructure  
Traffic  
Planning

Swedish  
maritime  
adm.

Civil  
aviation  
adm.

## Transport Analysis (Trafikanalys)

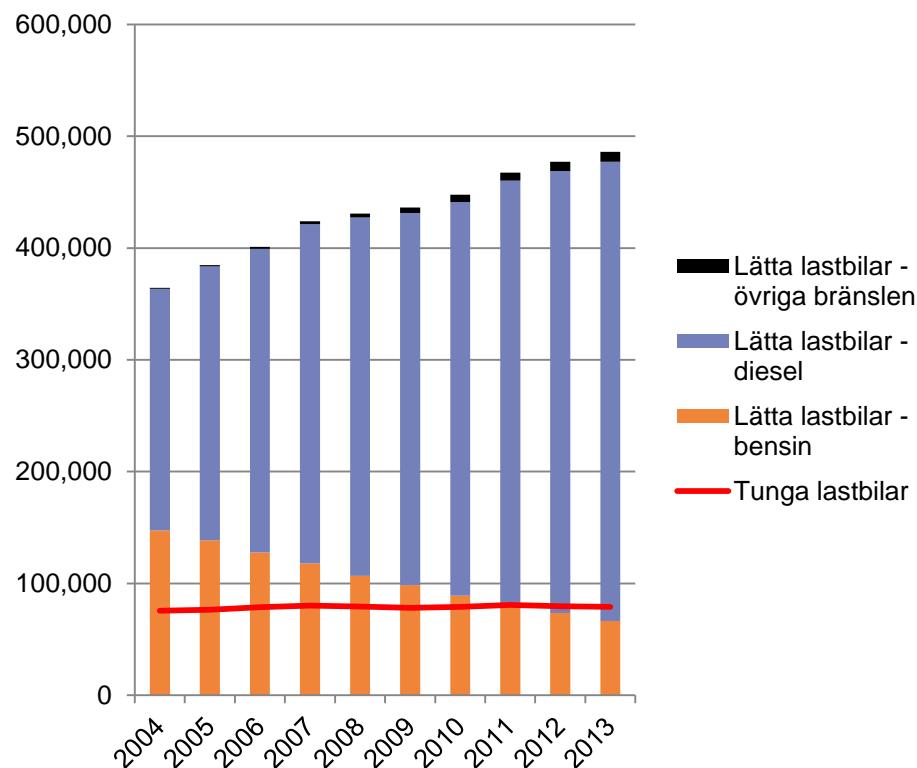
- A government agency, established on 1 April, 2010
- Provide decision-makers with sound and relevant policy advice
- Review, analyze, follow up, and evaluate proposed and implemented measures in transport policy
- Produce official statistics (OS) in the transport and communication sectors, including travel surveys and commodity flow surveys

# Road

- 7 000 000 vehicles
  - 4 500 000 cars
  - 550 000 trucks

Swedish roads (km)	2012
E-roads	6 500
National roads	8 900
Primary county roads	11 000
County roads	72 100
<b>Total state roads</b>	<b>98 500</b>
Municipality roads	41 600
Private roads	439 000

Number of light trucks per fuel, plus heavy trucks, 2004-2013.



# Rail



Rail	2012
Type	kilometers
Single track	9 190
Double track	1 947
Subway	109
Trams	130

# Airports – five largest

Flygplatser i Sverige där det under 2012 bedrevs linje- och/eller chartertrafik  
Swedish airports with scheduled and/or charter traffic in 2012

- ▲ Statlig flygplats State-owned airport
- Kommunal flygplats Municipal airport
- Privat flygplats Private airport



	Passengers	Tons	Landings
Stockholm-Arlanda	19 700 000	56 800	105 000
Göteborg-Landvetter	4 900 000	32 700	30 400
Stockholm-Skavsta	2 300 000		
Stockholm-Bromma	2 300 000		33 600
Malmö Airport	2 100 000	25 500	18 600
Örebro		6 400	
Stockholm-Västerås		5 100	
Göteborg city			24 600



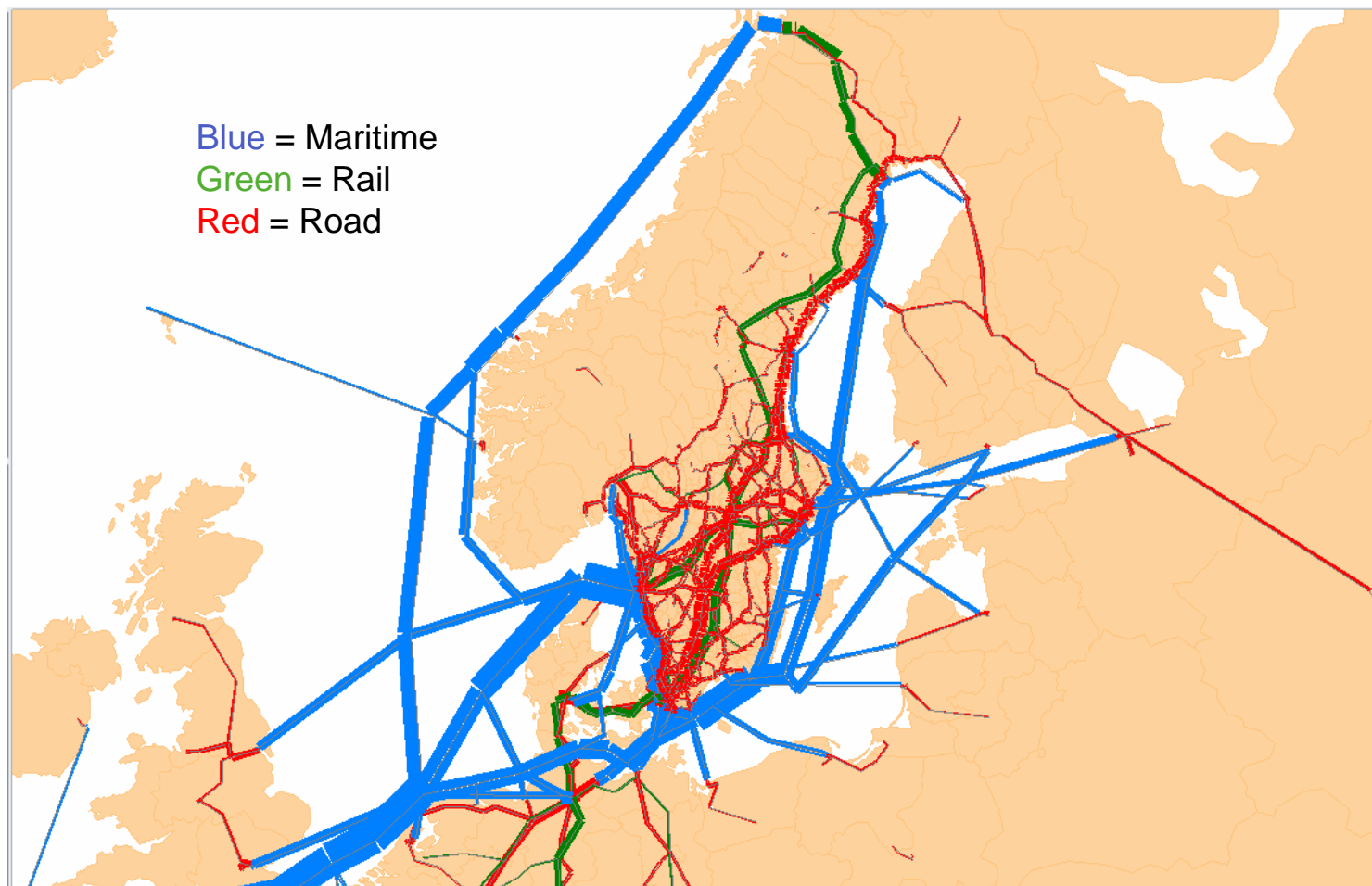
# Ports

The largest goods ports – handled tonnes 2012.



Port	Passengers
Stockholm	9 108 000
Helsingborg	7 841 000
Ystad	1 962 000
Göteborg	1 605 000
Visby	1 590 000

# Major goods flows 2012

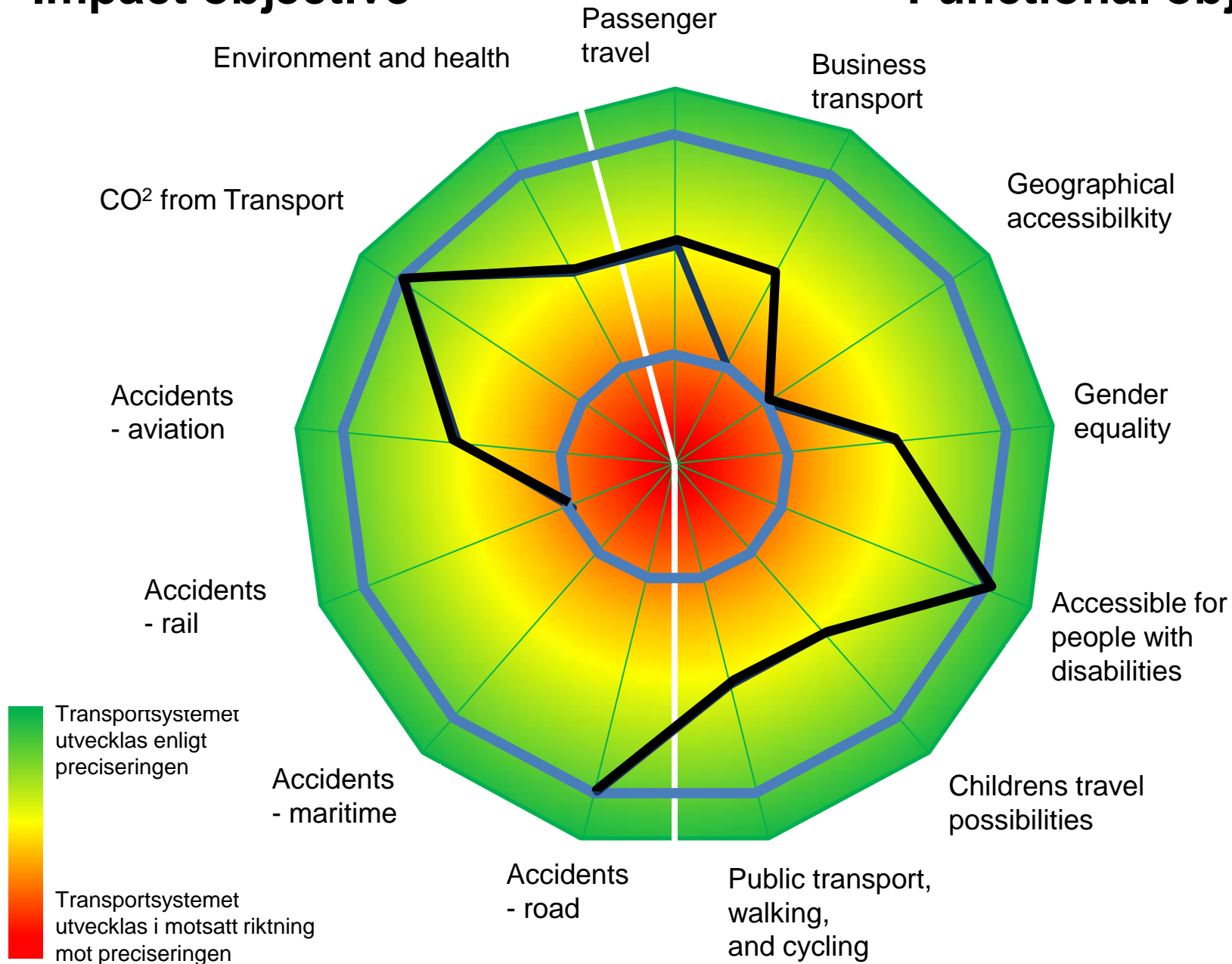


## Transport policy objective

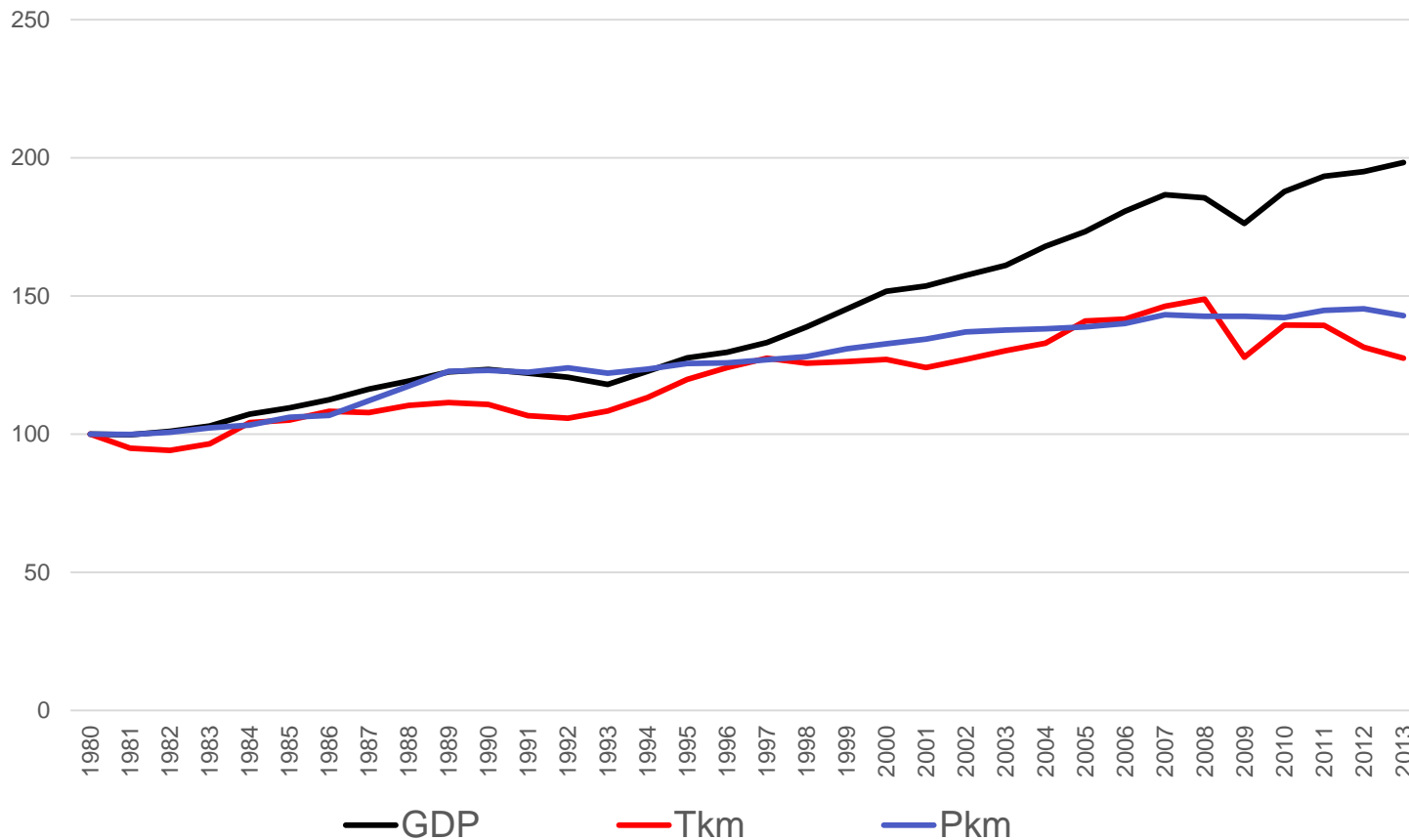
- The objective of transport policy is to ensure the economically efficient and sustainable provision of transport services for people and businesses throughout the country.
- *Functional objective – Accessibility:*
  - *The design, function and use of the transport system will contribute to provide everyone with basic accessibility of good quality and functionality and to support the development potential throughout the country. The transport system will be gender equal, meeting the transport needs of both women and men equally.*
- *Impact objective – Health, safety and environment:*
  - *The design, function and use of the transport system will be adapted to eliminate fatal and serious accidents. It will also contribute to the achievement of the environmental quality objectives and better health conditions.*

# Impact objective

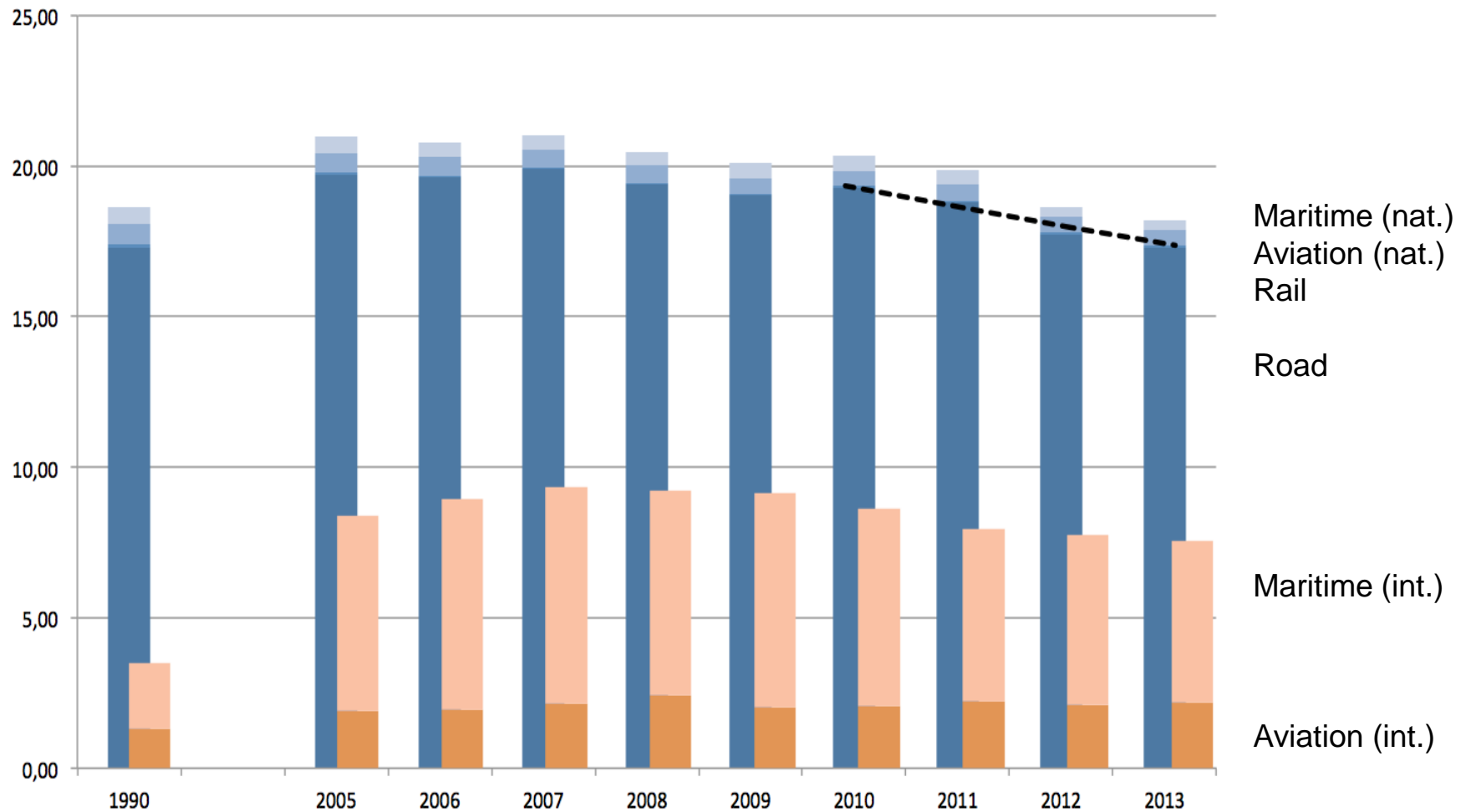
# Functional objective



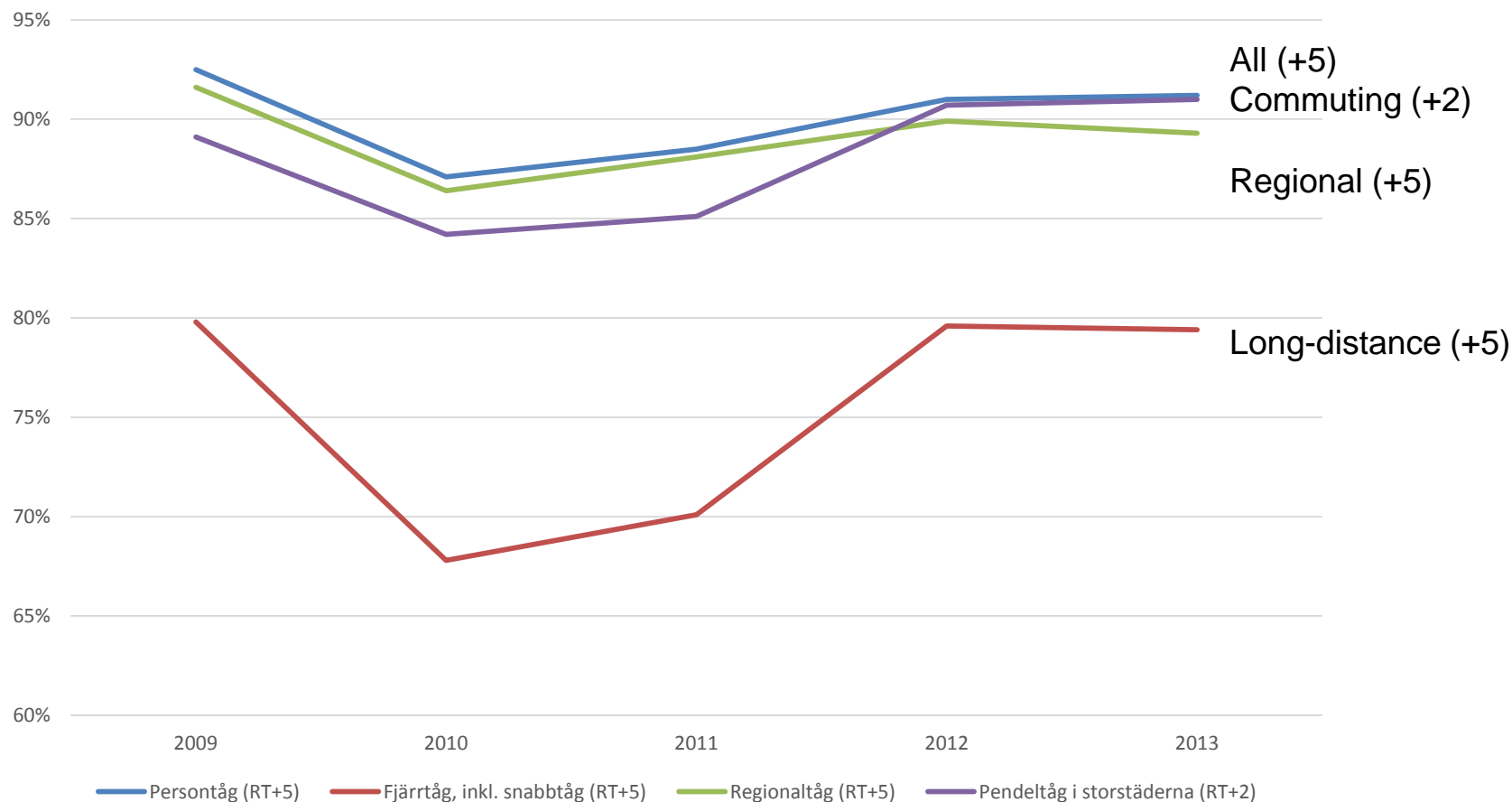
# Passenger and tonne km vs. economic growth



# Transport CO<sub>2</sub> emissions (million tonnes)

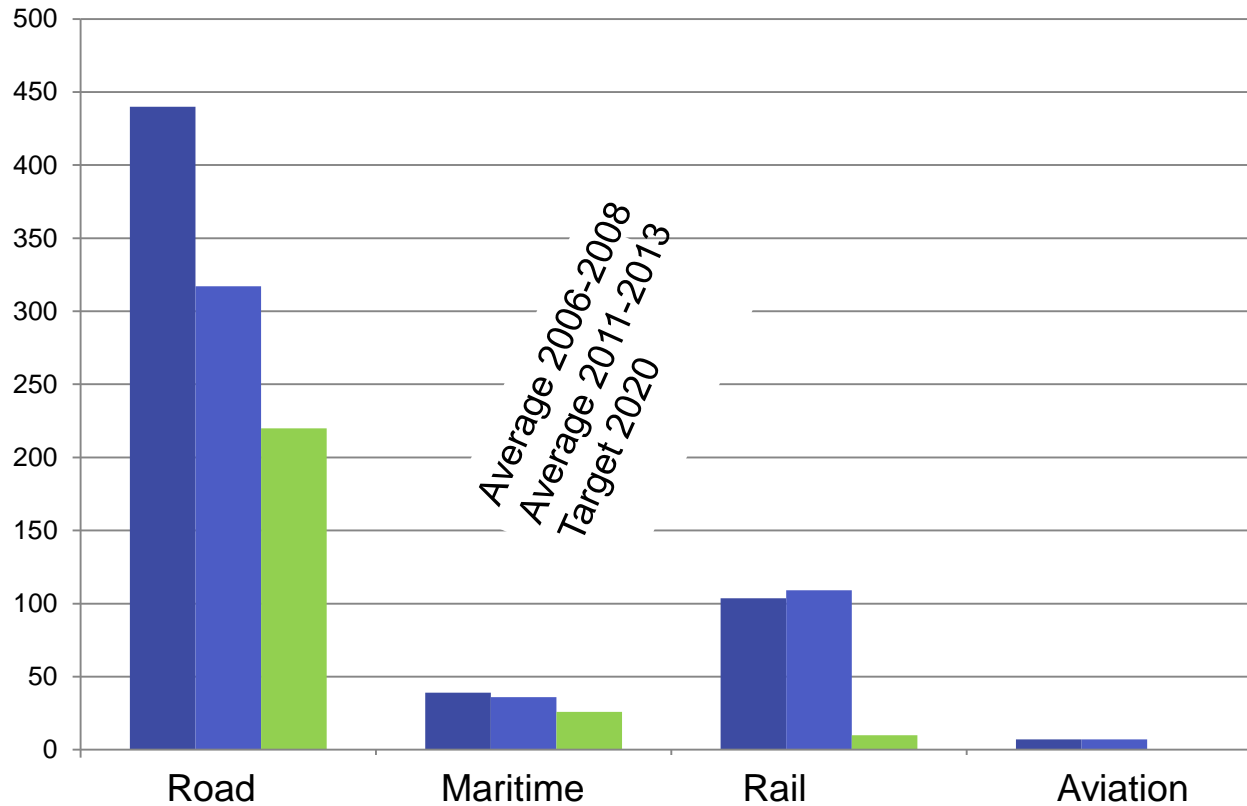


# Train punctuality at final destination (share of trains right time + 2 or 5 min.)



Figur 3.1.3: Andel persontåg som ankommer i till slutstation inom 2 respektive 5 minuter efter utsatt tid enligt tidtabell samt fördelningen per tåg sorts 2009-2013. Källa: (Trafikverket)

# Traffic safety – number of killed (including suicides on road and rail)





## Some transport news in Sweden

- Public transport is open for competition
- “Improve the railway system!”
- Sulphur Emission Control Area (SECA) 2015
- High speed rail network
- Fossil-free fuel vehicles 2030
- National Transport Plan 2014-2025

# National Transport Plan 2014-2025

Public investments 2012 (million SEK)				
Total Roads	State roads	Rail	Ports	Airports
19 260	11 689	12 218	218	5

National Transport Plan 2014-2025 (million SEK)	
Maintenance – road	155 000
Maintenance – rail	86 000
Investments	281 000
<b>Total</b>	<b>522 000</b>
Congestion fee etc.	67 000
Co-financing	18 000
Number of projects	150

1 € = 9,5 SEK

## Some major road projects

- Stockholm by-pass (Förbifart Stockholm)
  - 28 000 million SEK
    - TEN-T financing 1,4 Mdr SEK
  - 21 km (18 km in tunnel)
  - Planned traffic start 2024
- Sundsvall by-pass
  - 20 km on the E4, with 33 bridges
  - Planned traffic start 2015
  - 4 100 million SEK

## Some major rail projects

- Citybanan
  - 6 km tunnel in Stockholm for commuter trains
  - 2 new stations
  - 16 800 million SEK
  - Planned traffic start 2017
- Ostlänken
  - Double-Track High-speed Railway Stockholm-Linköping (150 km)
  - Planned traffic start 2028
  - 30 000 million SEK

**Thank you for your attention!**

