



# Urban Transport and Mobility around the Globe

Konstantinos Alexopoulos  
Secretary  
Transport Trends and Economics (WP.5)



What is the **objective** of today's **workshop**?

total population in UNECE region:  
1,252,091,000  
\* population of big cities (1 per country):  
137,366,000  
- on average the 10,50% of the population of UNECE region lives in the capital or the biggest city of the country.

7 Global challenges for Urban Transport and Mobility

**financing**

operational costs, infrastructure, rolling stock, technological applications, state-region-municipality.

**rolling stock**

optimization: transport more passengers with less possible rolling stock - value to reduce, specifications and logistics of spare parts, trams, buses, trolleybuses,....

**timetable**

transport chain - intermodality, capacity needs, reliability, adaptation to seasonal - passengers needs

**infrastructure**

dedicated lanes to enhance public mass, technical, intermodal.

**technology**

integrated transport systems, green transportation and use of smart applications in "intelligent" systems, etc.

**politics - policies**

national programs, regional plans, citizens initiatives, higher level approach, increasing of "target" passengers etc.

**demand**

reduce demand, learn demand, increase demand responsiveness.

thank you

**UNECE**

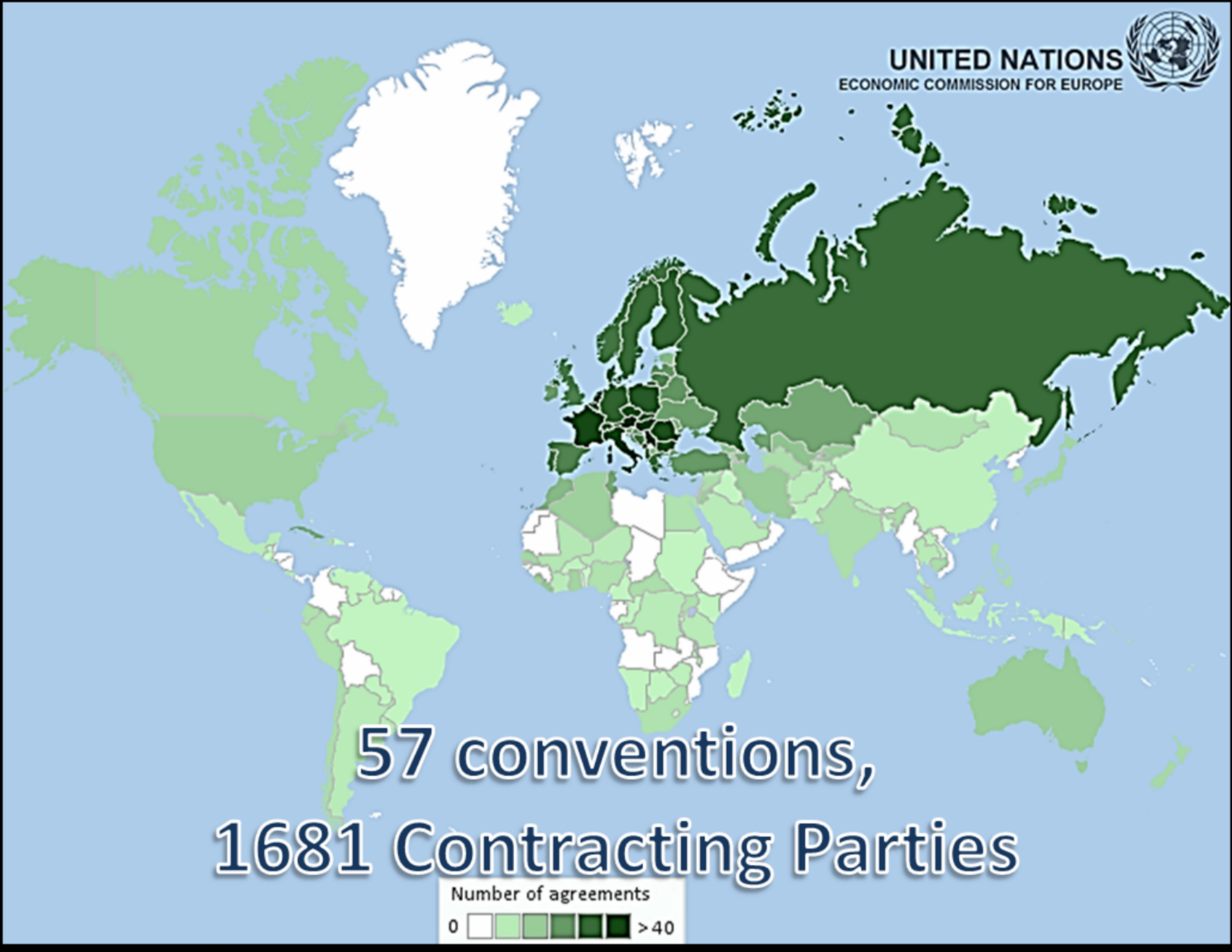
**Transport Division**



57 conventions,  
1681 Contracting Parties

Number of agreements

0      > 40



## We have an impact in daily life!

### Daily life of People!



### Daily life of Businesses



# UNECE Transport Division

## We have an impact in daily life!

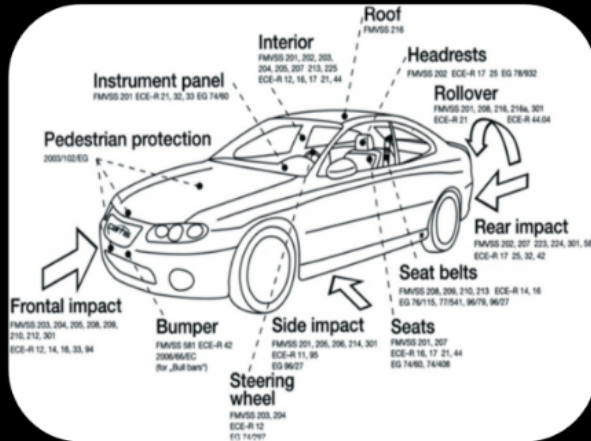
### Daily life of People!

A collage of icons representing road safety and international travel documents. It includes a car diagram with labels for interior, headrests, rear impact, seat belts, side impact, and seats. A 'Green Card' (Motor Vehicle Insurance System) form with fields for country, vehicle details, and insurance information. A car accident scene with a 'Traffic Safety' sign. A 'NATIONAL DRIVING PERMIT' sign. A 'STOP' sign. An 'E19' sign.

### Daily life of Businesses

A collage of icons representing international trade and transport. It includes a radiation warning sign, a truck with a 'TIR' (Transit) sign, a 'CMR' (Convention for the International Carriage of Goods by Road) document, a truck with a 'TIR' sign, and a 'CMR' document.

# Daily life of People!



### Green Card Motor Vehicle Insurance System

1. MEDUNARODNA OSIGURAVANJE VOZILA

1. INTERNATIONAL MOTOR INSURANCE CARD

2. Izdata po ovlaštenju: UDRUZENJA OSIGURAVACA

2. Issued under authority of: SRBIJE

3. VAŽI - VALID					
OD - FROM			DO - TO		
dan	meseč	god	dan	meseč	god
Day	Month	Year	Day	Month	Year

(uključena su oba dana - Both Dates inclusive)

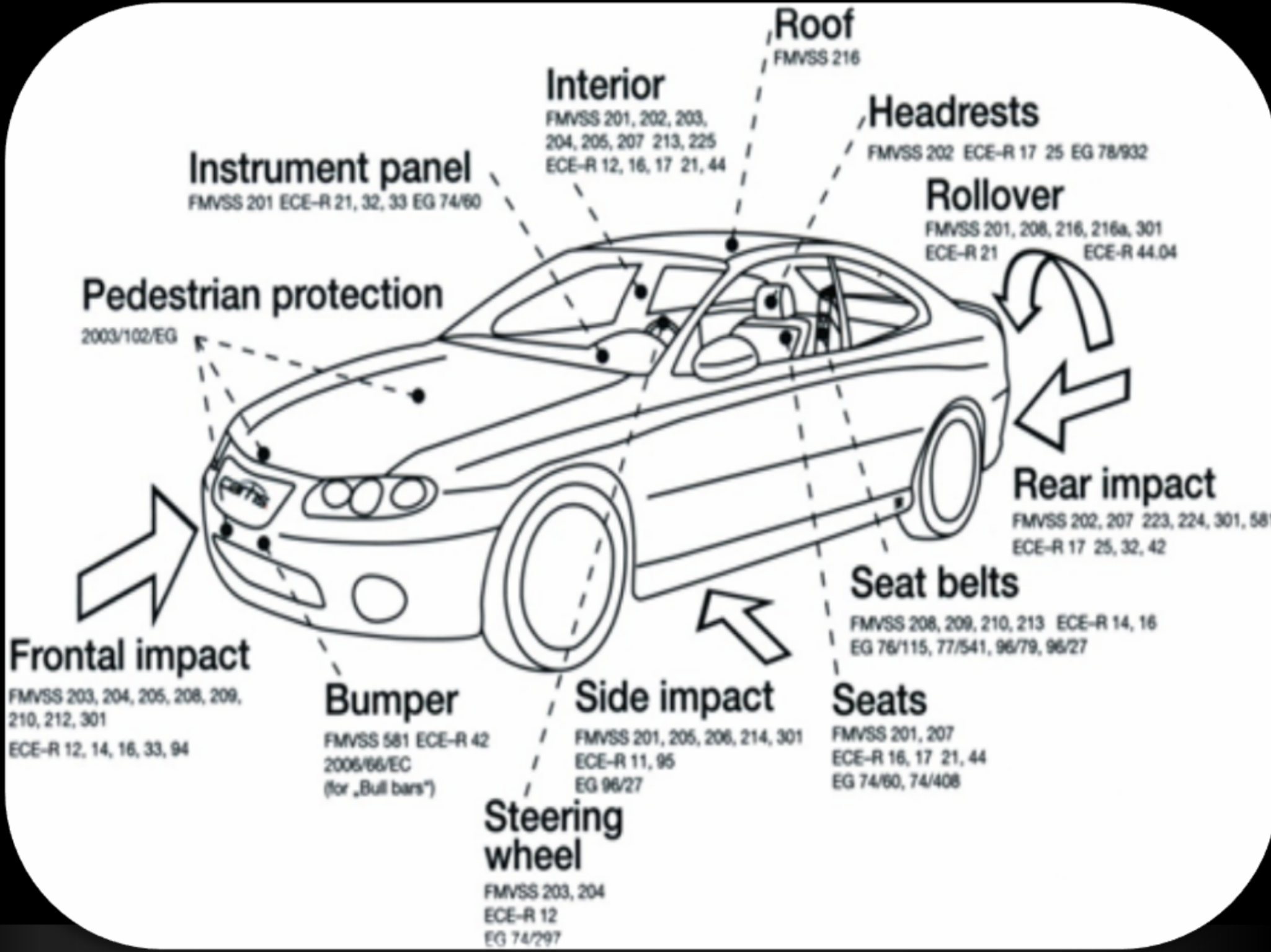
4. Zemlja/osiguravač/broj karte i polise  
4. Country Code/Insurer's Code/Serial and Policy Number

SRB/NS/  
02222222

5. RegistarSKI broj (ako nema) broj šasije ili broj motora:  
5. Registration No. (or if none) Chassis or Engine No.:

6. Vrsta i marka motornog vozila\*  
6. Category and make of Vehicle





**Instrument panel**  
 FMVSS 201 ECE-R 21, 32, 33 EG 74/60

**Pedestrian protection**  
 2003/102/EG

**Frontal impact**  
 FMVSS 203, 204, 205, 208, 209,  
 210, 212, 301  
 ECE-R 12, 14, 16, 33, 94

**Bumper**  
 FMVSS 581 ECE-R 42  
 2006/66/EC  
 (for „Bull bars“)

**Steering wheel**  
 FMVSS 203, 204  
 ECE-R 12  
 EG 74/297

**Interior**  
 FMVSS 201, 202, 203,  
 204, 205, 207 213, 225  
 ECE-R 12, 16, 17 21, 44

**Side impact**  
 FMVSS 201, 205, 206, 214, 301  
 ECE-R 11, 95  
 EG 96/27

**Roof**  
 FMVSS 216

**Headrests**  
 FMVSS 202 ECE-R 17 25 EG 78/932

**Rollover**  
 FMVSS 201, 208, 216, 216a, 301  
 ECE-R 21 ECE-R 44.04

**Rear impact**  
 FMVSS 202, 207 223, 224, 301, 581  
 ECE-R 17 25, 32, 42

**Seat belts**  
 FMVSS 208, 209, 210, 213 ECE-R 14, 16  
 EG 76/115, 77/541, 96/79, 96/27

**Seats**  
 FMVSS 201, 207  
 ECE-R 16, 17 21, 44  
 EG 74/60, 74/408



# Green Card

## Motor Vehicle Insurance System

1. MEĐUNARODNI  
1. INTERNATIONAL MOTOR INSURANCE CARD

2. Izdata po ovlašćenju  
2. Issued under authority of:
- UDRUŽENJA OSIGURAVAČA  
SRBIJE

3. VAŽI - VALID							4. Zemlja/osiguravač/ broj karte i polise 4. Country Code/Insurer's Code/ Serial and Policy Number  <b>SRB/NS/</b>  <span style="font-size: 1.5em;">022222222</span>
OD - FROM			DO - TO				
dan Day	mesec Month	god Year	dan Day	mesec Month	god Year		
(uključena su oba dana - Both Dates inclusive)							

5. RegistarSKI broj (ako nema)  
broj šasije ili broj motora:  
5. Registration No. (or if none)  
Chassis or Engine No.:

6. Vrsta i marka  
motornog vozila\*  
6. Category and  
make of Vehicle



Traffic Safety

# INTERNATIONAL DRIVING PERMIT

RÉPUBLIQUE FRANÇAISE

CIRCULATION AUTOMOBILE INTERNATIONALE

## PERMIS INTERNATIONAL

DE CONDUIRE N° 36042

Convention sur la circulation routière  
du 8 novembre 1968

Valable jusqu'au 24 NOV. 2011 (1)

Déclaré par PREFECTURE DE L'AIN

à BOURG-SUR-BRESSE

le 24 NOV. 2008

Numéro de permis de conduire national 38094204580



Fait le Présent  
à Chef de Bureau Délégué  
  
J.M. SIMON (2)

(1) Voir les règles de circulation des véhicules sur le site d'information de la circulation sur le site national de circulation, à cette adresse: [www.circulation.gouv.fr](http://www.circulation.gouv.fr)  
(2) Nom complet de l'auteur de l'acte de circulation qui délivre le permis.  
(3) Signature de l'auteur de l'acte de circulation qui délivre le permis.



# E19



<b>E29</b>		
Zágráb - Zagreb	🚚	234
Letenye	🚚	118
<b>E67</b>		
Ljubljana	🚚	353
Ternitzsch		137

<b>E71</b>	<b>M7</b>	
Nagykanizsa		99
<b>67</b>	Kaposvár	79
<b>76</b>	Zalaegerszeg	110
<b>71</b>	Keszthely	72

121 6 km

115

# Daily life of Businesses



3. Ausgabepunkt des Gutes		17. Sendegüter Handzettel (siehe Anmerk. 10)	
4. Ausgabepunkt des Gutes (als Empfänger)		18. Anzahl und Beschreibung der Packstücke	
5. Empfänger (Name)		19. Anzahl d. übergebenen Güter	
6. Versender und Nummer des Gutes		7. Anzahl der Packstücke	8. Art der Verpackung
9. Anzahl der Güter		10. Verpackungsart	11. Befragter Name
12. Ort der Abholung		13. Ort der Zustellung	





# TIR







**3** Auslieferungsort des Gutes  
Lieu prévu pour la livraison de la marchandise

**17** Name(n) des/n Frachtlieferanten (Name, Anschrift, Land)  
Transporteurs successifs (nom, adresse, pays)

**18** Vorbehalte und Bemerkungen der Frachtlieferanten  
Réserves et observations des transporteurs

Land/Pays

Datum/Date

**5** Beigefügte Dokumente  
Documents joints

**6** Kennzeichen und Nummern  
Marques et numéros

**7** Anzahl der Packstücke  
Nombre des colis

**8** Art der Verpackung  
Mode d'emballage

**9** Bezeichnung des Gutes\*  
Nature de la marchandise\*

**10** Statistiknummer  
No statistique

**11** Bruttogewicht in kg  
Poids brut, kg

**12** Umfang in m³  
Cubage m³



Klasse  
Classe

Ziffer  
Chiffre

Buchstabe  
Lettre

(ADH)  
(ADRI)

**13** Anweisungen des Absenders (Zoll- und sonstige amtliche Behandlung)  
Instructions de l'expéditeur (formalités douanières et autres)


21+22 Die mit fest geschriebenen Linien abgegrenzten Rubriken müssen vom Frachtlieferanten ausgefüllt werden.

15 einschließen y-compris et


Die mit fest geschriebenen Linien abgegrenzten Rubriken müssen vom Frachtlieferanten ausgefüllt werden.







What is the **objective**  
of today's  
**workshop?**

- 
- **total population in UNECE region :  
1,252,991,880;**
  - **population of big cities (1 per country):  
131,566,049;**
  - **on average the 10,50% of the population  
of UNECE region lives in the capital or the  
biggest city of the country.**

A satellite view of the Earth from space, showing the curvature of the planet, blue oceans, white clouds, and brownish-green landmasses. A large, semi-transparent grey circle is overlaid on the left side of the image, framing the text. The background is black, suggesting the void of space.

# **7 Global challenges for Urban Transport and Mobility**





1

# financing

operational deficit, infrastructure,  
rolling stock, technological applications,  
state-region-municipality.







# **rolling stock**

**optimization: transport more passengers  
with less possible rolling stock , when to order,  
specifications and logistics of spare parts,  
trains, buses, tramways.....**

**2**





3

**transport chain - intermodality, capacity needs,  
reliability, adaptation to seasonal - passengers  
needs**

**timetable**



stations, access to stations,  
parking areas, railroads, tramroads etc

**infrastructure**

4



# technology

intelligent transport systems, green transportation  
and use of smart applications as "batteries  
recharging stations" etc







# politics - policies

national programs, regional needs,  
citizens initiatives, single ticket approach,  
decreasing of "illegal" passengers etc





induced demand, future demand,  
seasonal demand, bottlenecks...

**demand**



**thank you**