

Transmitted by the expert from ETRTO

Informal document **GRRF-73-18**
(73rd GRRF, 18-20 September 2012
Agenda item 7(d))

WET GRIP ADHESION FOR C2 & C3 TYRES

Proposal for minimum requirements

Reference to document GRRF-73-08

Introduction

The minimum performance level should fit to the State of Art on existing markets since there are no indications that C2 or C3 tyres on the market are unsafe regarding wet adhesion.

1. Limits in R117.02 for C1 tyres

<i>Category of use</i>		<i>Wet grip index (G)</i>
Normal tyre		≥ 1.1
Snow tyres		≥ 1.1
	“Snow tyre for use in severe snow conditions” and with a speed symbol (“R” and above, including “H”) indicating a maximum permissible speed greater than 160 km/h	≥ 1.0
	“Snow tyre for use in severe snow conditions” and with a speed symbol (“Q” or below excluding “H”) indicating a maximum permissible speed not greater than 160 km/h	≥ 0.9
Special use tyre		Not defined

2. Proposed limits in R117.02 for C2 tyres

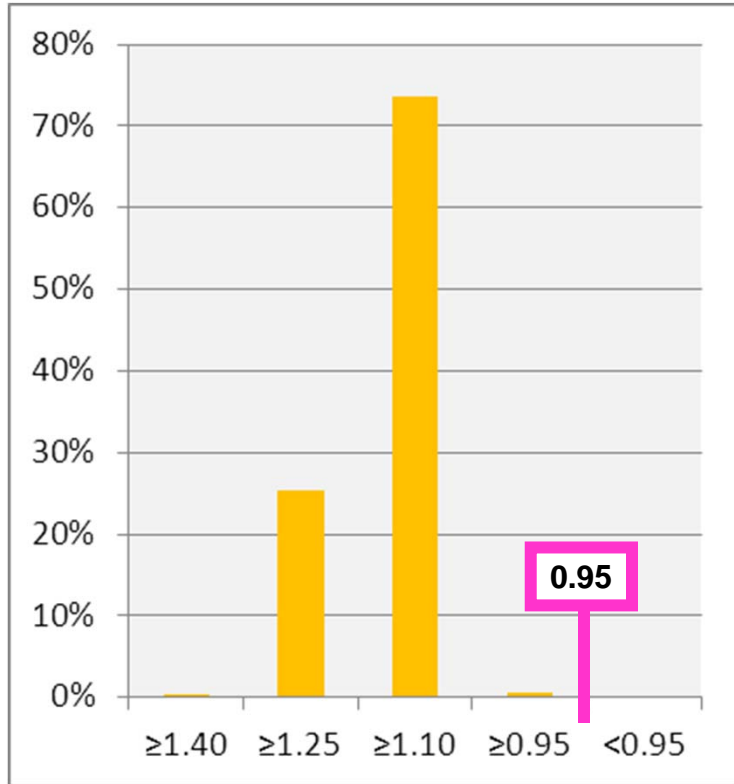
<i>Category of use</i>		<i>Wet grip index (G)</i>	
		Other	Traction Tyres
Normal Tyres		≥ 0.95	≥ 0.85
Snow Tyres		≥ 0.95	≥ 0.85
	Snow tyres for use in severe snow conditions	≥ 0.85	≥ 0.85
Special use Tyres		≥ 0.85	≥ 0.85

2. Proposed limits in R117.02 for C3 tyres

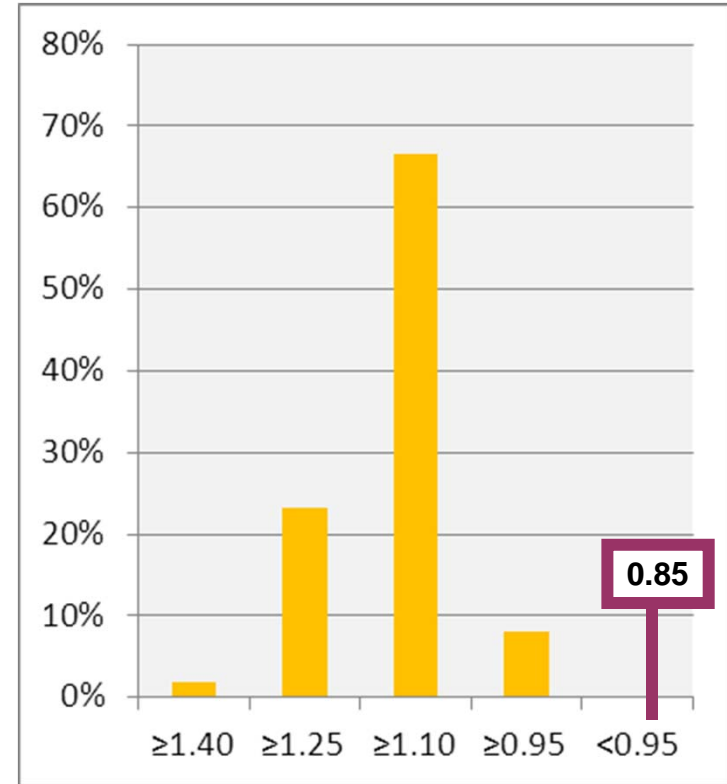
<i>Category of use</i>		<i>Wet grip index (G)</i>	
		Other	Traction Tyres
Normal Tyres		≥ 0.65	≥ 0.65
Snow Tyres		≥ 0.65	≥ 0.65
	Snow tyres for use in severe snow conditions	≥ 0.65	≥ 0.65
Special use Tyres		≥ 0.65	≥ 0.65

3. Comparison to the State of the Art: C2 tyres

NORMAL TYRES

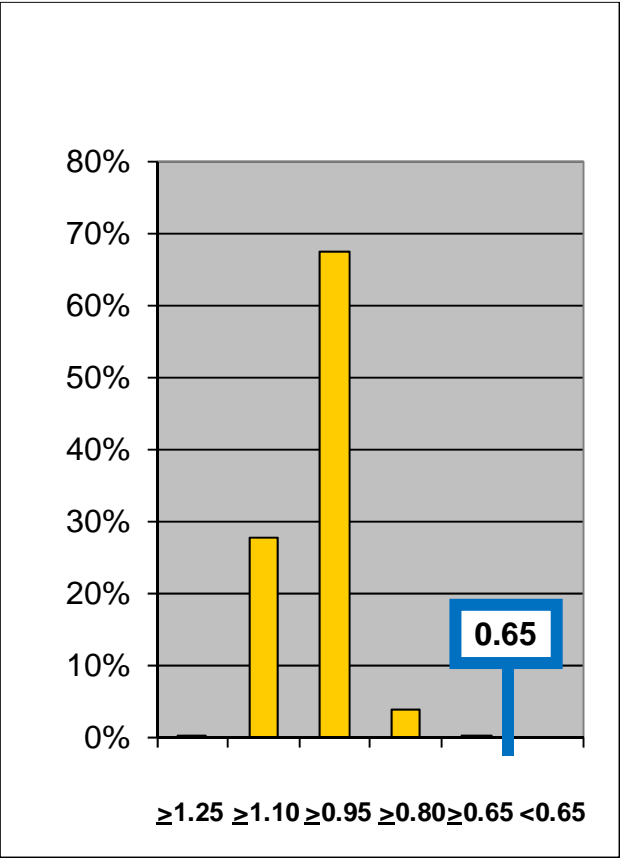


SNOW TYRES

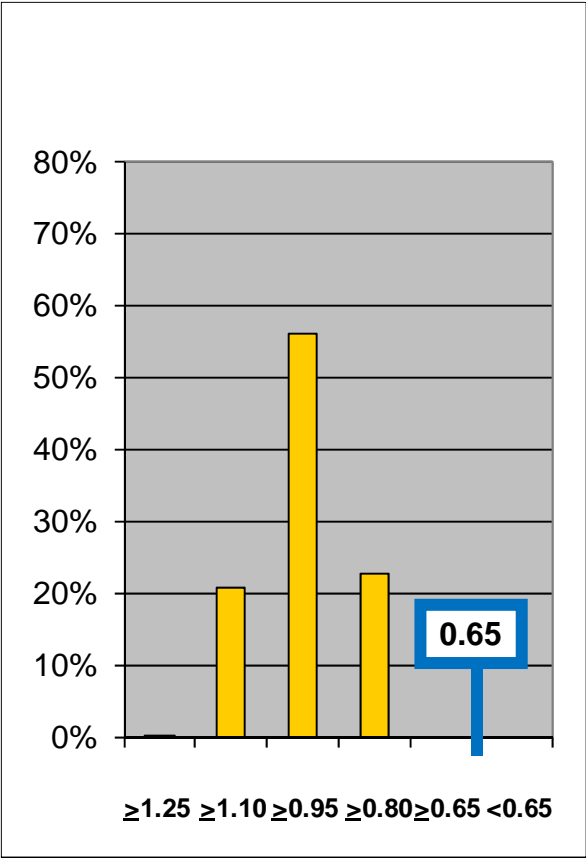


3. Comparison to the State of the Art: C3 tyres

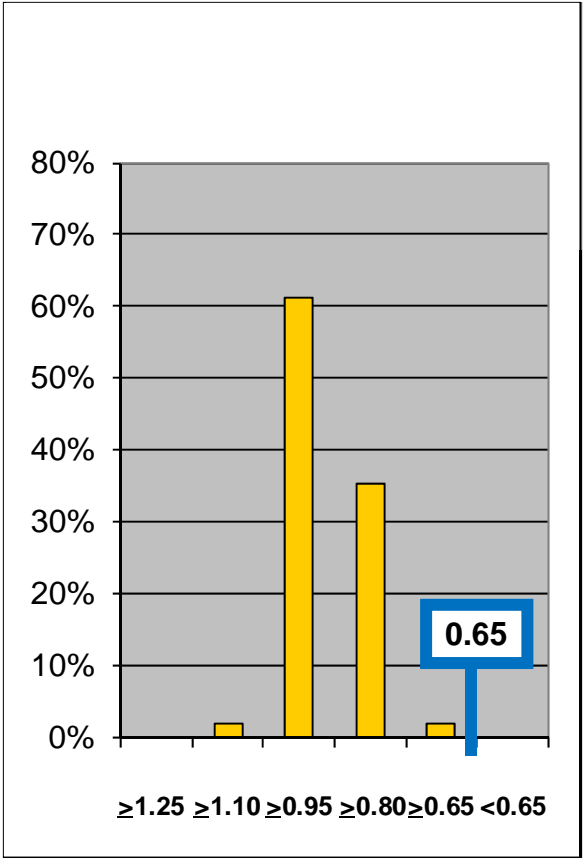
NORMAL TYRES



TRACTION TYRES



SNOW TYRES



4. General comments

- The minimum requirement has been proposed to keep the minimum performance as per the European and Japanese State of Art.
- The limit proposed for C2 normal tyres is the same as the one requested by Korea.
- The impact of the planned requirements for Rolling Resistance and Noise on the future state of the art is unknown. Therefore at least the current level of wet grip performance shall be maintained.

Thank you!