



UN, Geneva

Intermodal & Logistics WP.24

Agenda point 2

- 1) BESTFACT: Best Practice Factory for freight Transport
- 2) CO3: Collaboration Concepts for Co-modality
- 3) SUPERGREEN: Defining green corridors
- 4) SPECTRUM: enhance rail competitiveness in unexploited markets
- 5) MODAIR: new forum for airports, rail, urban transport

(EIA involvement as partner, board member or via its members)

Supply Chain Decarbonisation saving opportunities

World Econ.Forum, 2009

	Measure	Explanation	Potential abatement (Mt CO ₂ e)	Feasibility
1	Clean vehicle technology	Introduce clean and environmentally efficient technologies	175	High
2	Slowing down product flow	Decrease transport speed and increase load fill	171	High
3	Localized sourcing of agricultural produce	Optimize the location of agriculture	178	Medium
4	Optimization of logistics networks	Improve network planning through transformation projects	124	High
5	Increased energy efficiency of buildings	Minimize emissions from operating activities	93	High
6	Improved packaging design	Reduce weight and volume of packaging	132	High
7	Enable low carbon production	Optimize manufacturing location	152	Medium
8	Training and communications	Provide training to road transport contractors and building operators	117	Medium
9	Freight modal shift	Transfer freight from air and long-haul road freight to ocean, road and rail freight	115	Medium
10	Reverse logistics / recycling	Improve percentage of total supply chain waste which is	94	Medium



1. New EU portal for freight transport best practices

- ✓ Intermodality/green logistics; Urban freight; E-Freight
- ✓ Aligns with several EC policy initiatives
- ✓ Identification, evaluation, dissemination of cases
- ✓ Robust methodology MCA

(Innovative character; Effect on business & policies; transferability other domains; Cost/Benefits)

- ✓ 18 scientific partners
- ✓ Board: DHL, IVECO; Port Amsterdam, P&G

www.bestfact.net

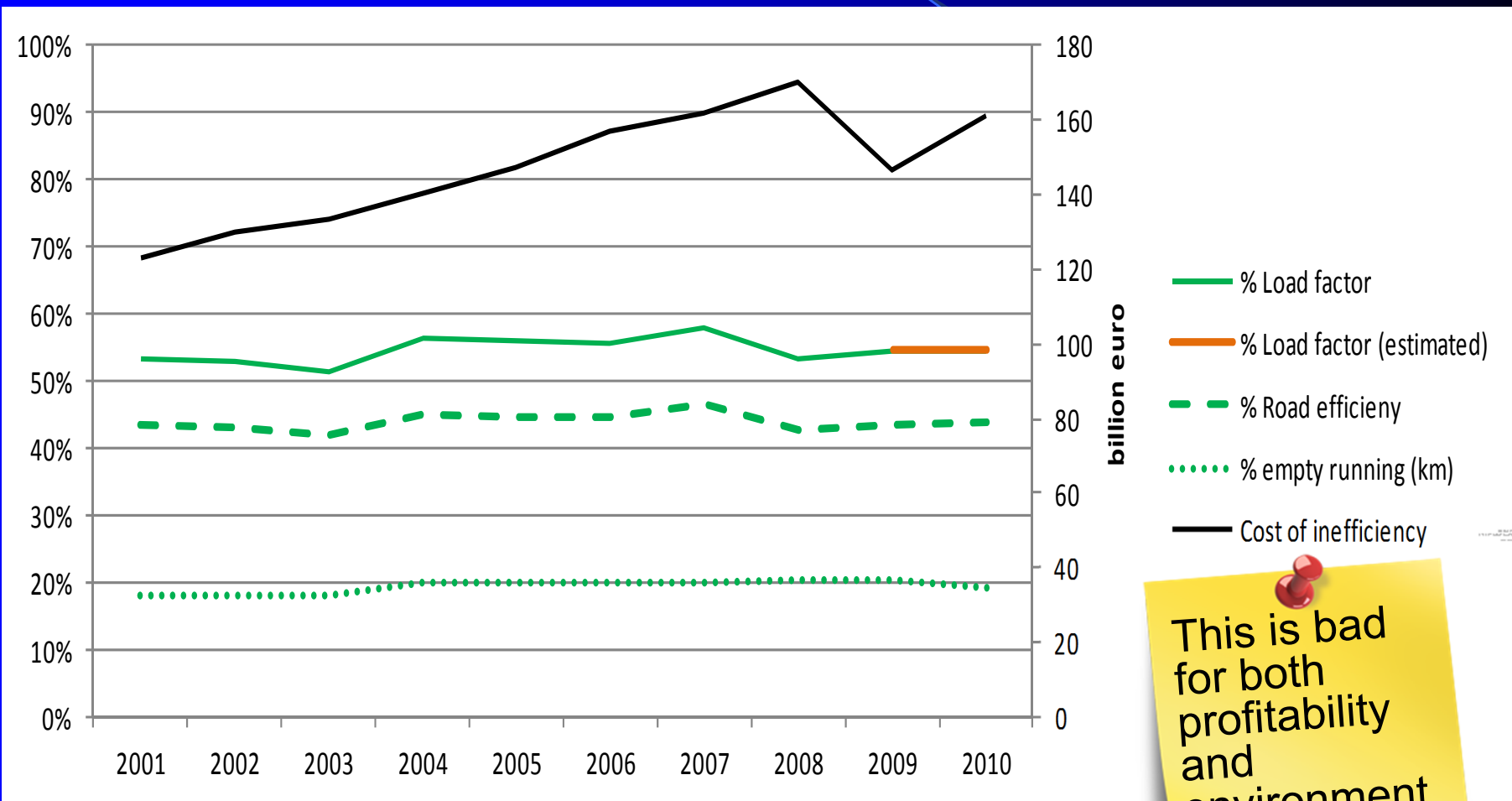


2. Collaboration Concepts for Co-modality ('from CO2 to CO3')

- ✓ Horizontal logistics collaboration between shippers
- ✓ Pre-identifying and matchmaking potential flows by neutral 'trustee', also to avoid anti-trust
- ✓ Increasing vehicle load factors, reducing empty movements and cost, stimulate co-modality

CO3: more efficient use of loading capacity; stimulating intermodality

1 out of 4 freight vehicles are running empty. Rest filled only 57% of weight capacity



Based on 2012 Eurostat + EU Environment Agency data, 2010

This is bad for both profitability and environment



HLIB Mission:

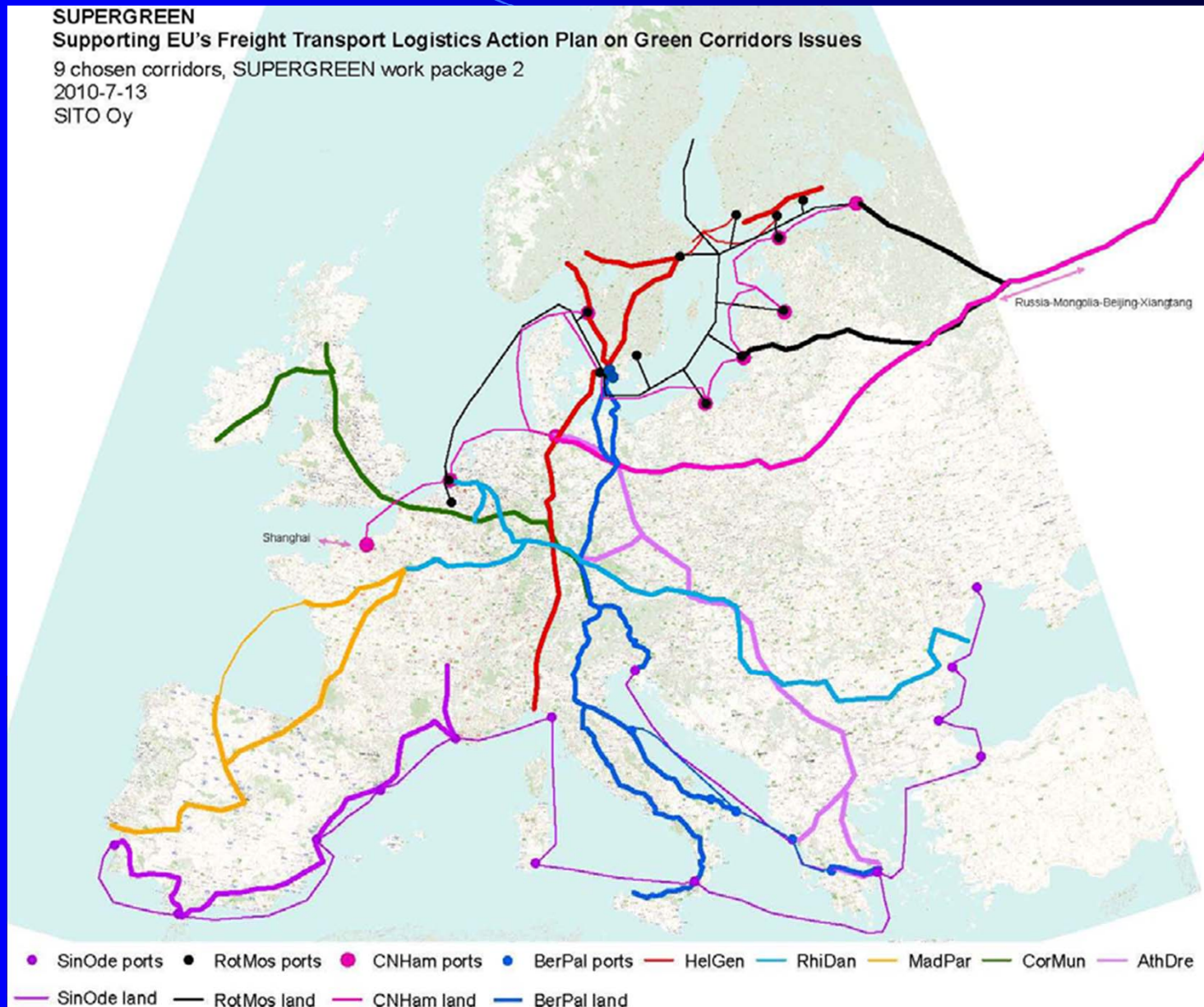
- Review and discuss CO³ milestones and results
- Provide valuable market feedback for development and success of CO³ project



3. Defining Green Corridors

- Benchmarking Green Corridors: policy and R&D recommendations; 'Green' technologies; 'Smarter' utilisation infra, etc.
- Advisory Board: CER; EC; EIA; ESC; INE; OECD; Polish ministry; VGTU
- EC is planning to use (parts) SuperGreen output for TEN-T policy
- Participating EIA members: DB Schenker, Procter & Gamble

Selected green corridors



Selection procedure 'green corridors'

(Various consecutive steps incl. consultation meetings stakeholders)

1. Potential green corridors based on TEN-T network;
2. Pan-European corridors;
3. Identification bottlenecks (...) rail, road, port/terminal infra;
4. Corridor assessment using set criteria:
 - ✓ transport volume
 - ✓ types of goods and multimodality
 - ✓ geographical preconditions
 - ✓ used transport and information technology
 - ✓ supply chain management and transport clients

Last step: identification KPI's (various supply chain actors/modes)

- ✓ Efficiency: KPIs on unit costs
- ✓ Service Quality: KPIs transport time, reliability, ICT applications, frequency of service, security & safety
- ✓ Environmental Sustainability: KPIs on CO2 & pollutants
- ✓ Infrastructural Sufficiency: KPIs on congestion & bottlenecks
- ✓ Social Issues: KPIs on corridor land use, safety, noise



4. Solutions and Processes to Enhance the Competitiveness of freight Transport by Rail in Unexploited Markets

- Investigate new rail intermodal markets (low density, high value, time sensitive freight services) Potential goods:
 - ✓ density 230 kg/m³ incl. packaging
 - ✓ density higher 230, lower 300 kg/m³, value €0.50 per kg
 - ✓ perishable goods (dairy, fresh, frozen fruits, vegetables)

- Global trends and demand analysis supported by:
 - ✓ Procter & Gamble; FrieslandCampina (*members EIA*).
 - ✓ Floraholland; Innovatrain; Eurocarex



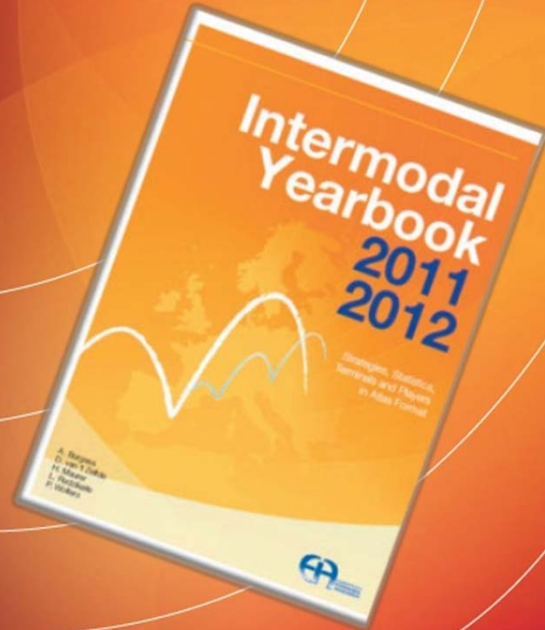
5. New Forum for airports, rail, urban transport

- Interconnectivity airports limited to urban transport, few high-speed train stations
- Produce view current state co-modality in airports; provide EC group of experts; identification R&D needs (single ticketing, luggage transfer, luggage transfer etc.)
- Partners: EADS (EU Aerospace, Defence, Space Cooperation); Aéroports de Paris; EIA; Spanish Railways Foundation (FFE); AD Cuenta; Advanced Logistics Group (ALG)
- Advisory Board: AFIF; FRAPORT; IATA; UIC



Strategies, Statistics,
Terminals and Players

Atlas format



EIA

Sustainable policies,
best practice promotion,
intermodal & logistics
innovations

www.eia-ngo.com
peter.wolters@eia-ngo.com

