



**Economic and Social  
Council**

Distr.  
GENERAL

ECE/TRANS/WP.29/2009/105  
23 July 2009

ENGLISH  
Original: ENGLISH AND FRENCH

---

**ECONOMIC COMMISSION FOR EUROPE**

**INLAND TRANSPORT COMMITTEE**

**World Forum for Harmonization of Vehicle Regulations**

One-hundred-and-forty-ninth session  
Geneva, 10-13 November 2009  
Item 4.2.28 of the provisional agenda

**1958 AGREEMENT**

Consideration of draft amendments to existing Regulations

Proposal for Supplement 9 to Regulation No. 110  
(Specific components for CNG)

Submitted by the Working Party on General Safety Provisions \*/

The text reproduced below was adopted by the Working Party on General Safety (GRSG) at its ninety-sixth session. It is based on ECE/TRANS/WP.29/GRSG/2009/3, not amended. It is submitted to the World Forum for Harmonization of Vehicle Regulations (WP.29) and to the Administrative Committee (AC.1) for consideration (ECE/TRANS/WP.29/GRSG/75, para. 30.)

---

\*/ In accordance with the programme of work of the Inland Transport Committee for 2006-2010 (ECE/TRANS/166/Add.1, programme activity 02.4), the World Forum will develop, harmonize and update Regulations in order to enhance performance of vehicles. The present document is submitted in conformity with that mandate.

Insert a new paragraph 17.9.4., to read:

"17.9.4. For vehicles of categories M<sub>2</sub>, M<sub>3</sub>, N<sub>2</sub> and N<sub>3</sub>, 1/ the filling unit (receptacle) shall comply with the drawing specifications detailed in Figure 2 of Annex 4F or with the drawing specifications detailed in Figure 1 of Annex 4F".

Annex 4F,

Paragraph 2.1., amend to read:

"2.1. The filling unit shall comply with the requirements laid down in paragraph 3. and shall have the dimensions of paragraph 4."

Paragraph 2.2., amend to read (including the insertion of a new footnote 2/):

"2.2. Filling units designed in accordance with ISO 14469-1 first edition 2004-11-01 1/ or ISO 14469-2:2007 2/ and meeting all the requirements therein are deemed to fulfill the requirements of paragraphs 3. and 4. of this annex."

---

2/ Road vehicles — Compressed natural gas (CNG) refueling connector — Part 2: 20 MPa (200 bar) connector, size 2"

Paragraph 4.1., footnote 2/ should be renumbered as footnote 3/

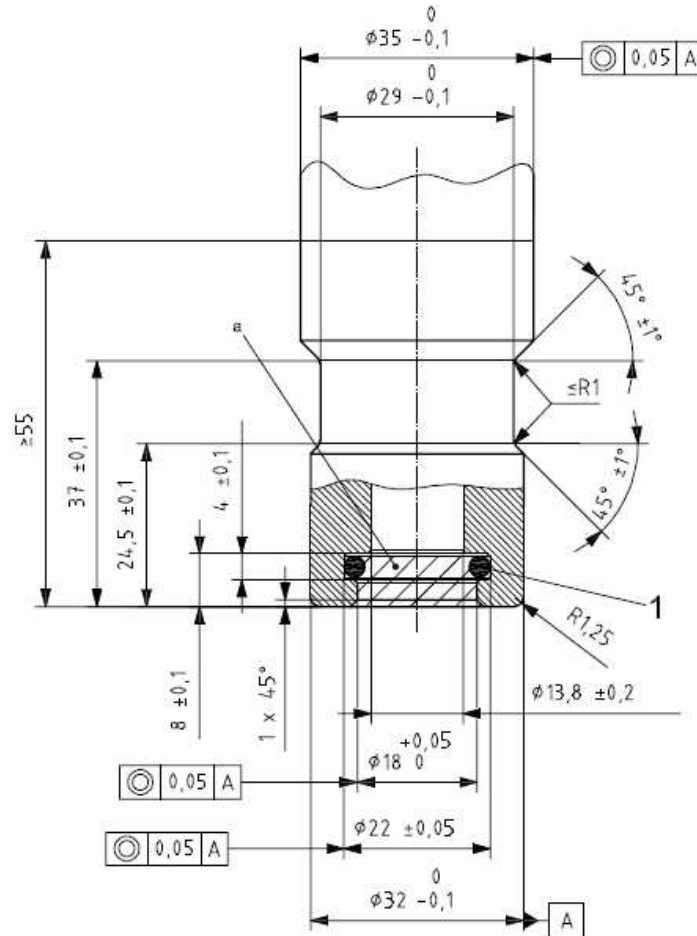
Insert a new paragraph 4.2., to read:

"4.2. Figure 2 shows the dimensions of the filling unit for vehicles of categories M<sub>2</sub>, M<sub>3</sub>, N<sub>2</sub> and N<sub>3</sub>. 3/"

Insert, after Figure 1, a new Figure 2, to read:

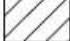
"Fig. 2: 20 MPa Filling unit Size 2 (receptacle) for M<sub>2</sub>, M<sub>3</sub>, N<sub>2</sub> and N<sub>3</sub> vehicles

Dimensions in millimetres



**Key**

1 sealing ID =  $\varnothing 15,47 \pm 0,1$  width =  $\varnothing 3,53 \pm 0,2$

<sup>a</sup> This area shall be kept free of all components 

Surface roughness < Ra 3,2  $\mu\text{m}$ .

Sealing surface finish: 0,8  $\mu\text{m}$  to 0,05  $\mu\text{m}$ .

Material hardness: 75 Rockwell B (HRB 75) minimum.

"

-----