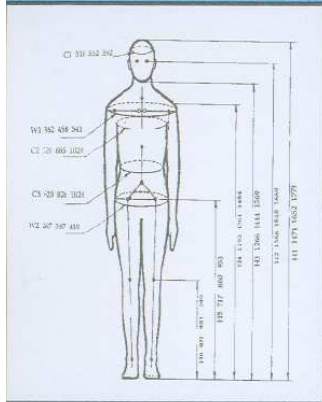




PASSIVE SAFETY LABORATORY (PSL)



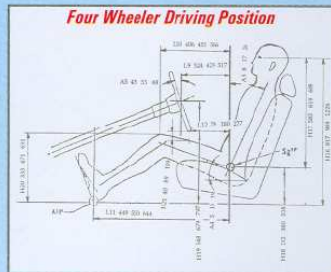
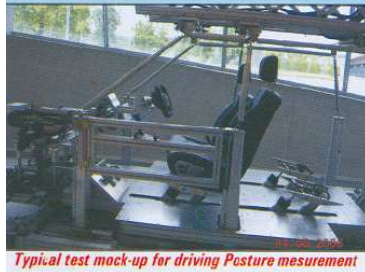
PROPOSES
 STUDY PROJECT
 ON
**ANTHROPOMETRIC
 DATA MEASUREMENT**
 FOR INDIAN
 DRIVING POPULATION

Objective:

To measure Indian Anthropometrics Data for Trucks and Agricultural Tractors; and update the existing database of Two-wheeler and Four-wheeler driving population.

Need of Project

- ❖ Availability of Limited Anthropometric Data measured in 1996-97
- ❖ Data more than 10 year old
- ❖ No data available for commercial vehicle Drivers and Agricultural Tractor Operators
- ❖ Indian population is showing upward changes in body statures
- ❖ Old correlation of available data with European / North American data



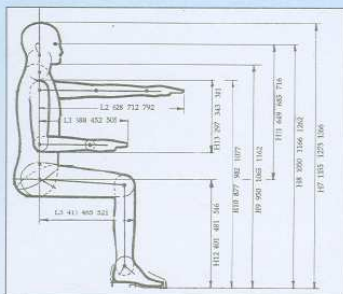
Methodology

- ◆ Use of "Ergo Scanner" for non-contact and speedy measurements
- ◆ Mock Set-ups for Simulating Driving Positions
- ◆ Region wise Population Study
- ◆ Consultancy, Analysis and Report generation

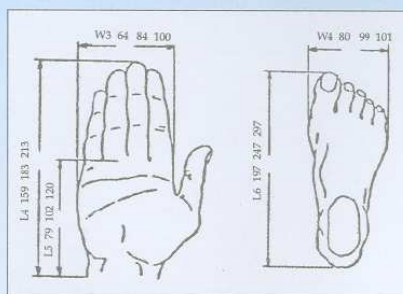
Resultant Data can be used by :

- ❖ OEMs
- ❖ Component manufacturers
- ❖ Tractor manufacturers
- ❖ Test agencies
- ❖ Govt. Organizations
- ❖ Standard formulation bodies

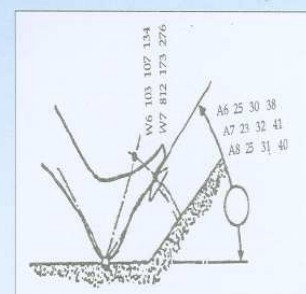
TYPICAL DIMENSIONAL MEASUREMENTS



SITTING POSTURE



HAND & FOOT MEASUREMENT



FOOT CONTROL PARAMETERS

FOR DETAILS E-Mail to : mannikar.psl@araiindia.com / saraf.psl@araiindia.com

THE AUTOMOTIVE RESEARCH ASSOCIATION OF INDIA