



Co-financed by DG TREN



Truck Parking with SETPOS & LABEL: Two DG TREN Projects

Presentation to Transport Division UNECE – SC.1
Geneva, 31 October 2008

Reported on behalf of the Consortia by
Rudolf Anner, CEO

Move & Park SAS
19, boulevard Malesherbes
75008 Paris

Tel. +33 - 1 - 55 27 39 18

Fax +33 - 1 - 55 27 37 00

info@moveandpark.com

www.moveandpark.com

UN_ECE_SETPOS_LABEL_2008_10_31_short.ppt

Topics

EU Project SETPOS

- Background
- Challenges
- Main Project Facts
- Participants
- Pilot Sites
- IT - The 3 Services



EU Project LABEL

- Main Project Facts
- Participants
- Certification process
- Integration into the Truckinform information system

LABEL





Secured Truck Parking Operational Systems



Background and objectives

Background

- Mid 2006 call for tender by the European Union, DGTREN:
 - + Call for proposals with a view to obtaining grants for pilot projects to promote secure rest places along the trans-European road network

Objectives

- Develop and Promote standards for secure truck sites
- Run test sites — build new sites or upgrade existing
- Develop information, booking and guidance system
- Consider Trans-European transport axes

Challenges 1

- Crime on the rise: Theft of cargo and drivers' health threatened
- Enlarged EU and distributed production sees transport volumes rising
- Mobility of highly organized criminals rising
- Co-operation of law enforcement inadequate
- Added complexity: Terrorist threats
- Pressure from cargo shippers, insurances, forwarders and carriers to improve the situation



wants to contribute improvements

Challenges 2

- Severe lack of parking spaces in some member states
- Not enough secured parking sites
- At least 10'000 spaces/slots missing in Germany alone
- Search traffic adds to congestion; pollution
- Drivers have problems to adhere to drive time regulations
- Image of road transport should be improved

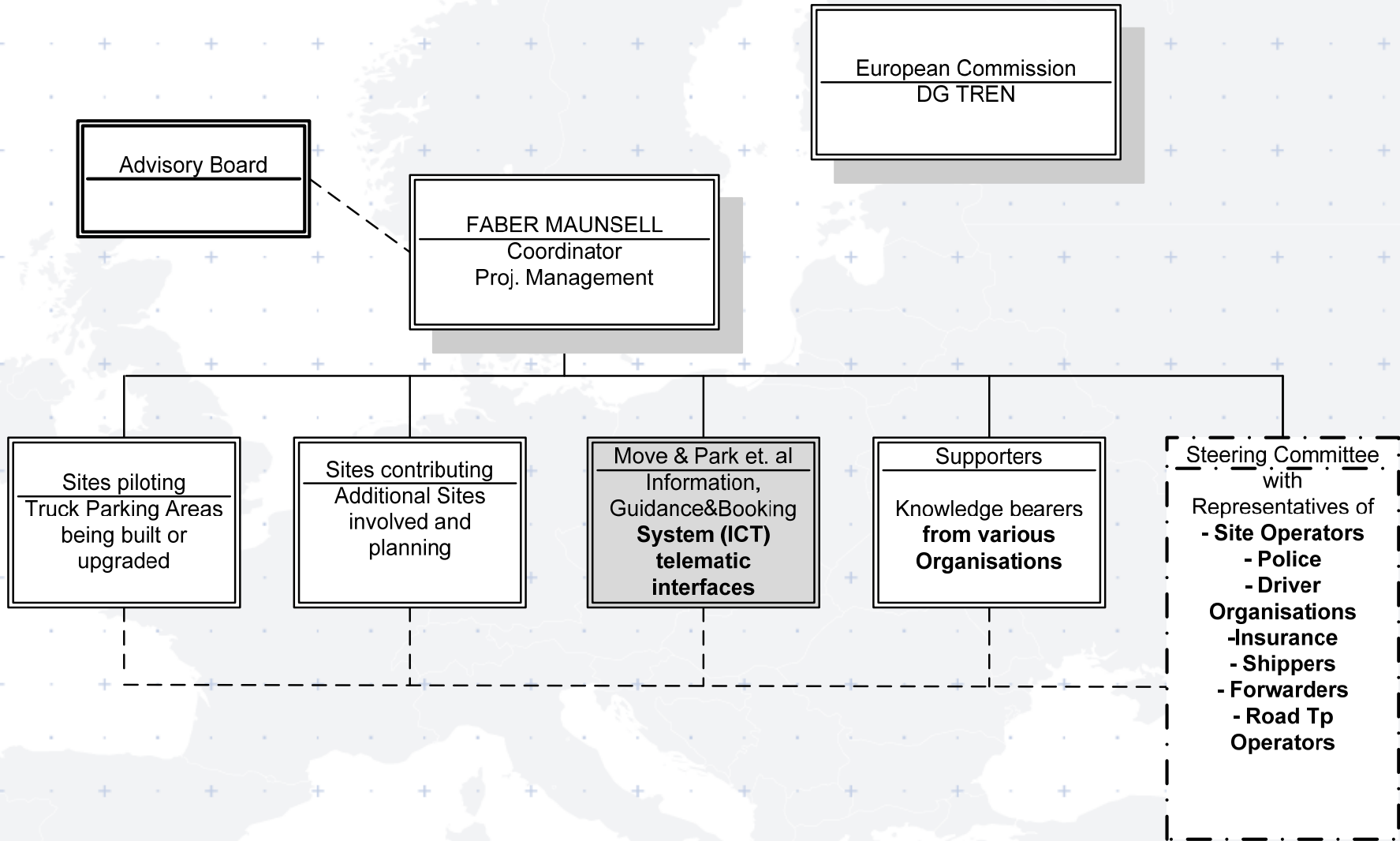


wants to contribute improvements

SETPOS project facts

- Budget: € 11 million of which the EC contributes € 5,2 million
- Duration: 24 month; start in spring 2007
- Coordinator: Faber Maunsell, UK
- Initiator: Allmobile, Zürich / Move & Park, Paris
- Participants
 - 10 partners
 - 5 sites
 - 11 supporters

Involvement of Move & Park in SETPOS



SETPOS Partners



SETPOS partners

- Five pilot sites FR, BE, DE, UK
- ADAC DE
- Daimler Chrysler Fleet Board DE
- Groupe Save FR
- Move & Park FR
- People United Against Crime UK
- Road Haulage Assoc. (RHA) UK
- Teleroute BE
- Union International des Chauffeurs Routiers (UICR) Int.
- VEDA (German Truck Stop Assoc.) DE
- Vinci / Truck Etape FR

Participant supporters

- Asfinag National motorway operator AT
- Autostrade Motorway operator IT
- Axa Insurance FR
- euroShell Fuel card operator NL
- Eurowatch Crime fighting services UK
- FFI Interest group of leading freight forwarders Int.
- Fiata Association of freight forwarders Int.
- GDV National insurance association DE
- IRF/ERF International/European Road Federation CH
- IRU International Road Union CH
- Tank & Rast Organization for rest areas DE
- TAPA EMEA Interest group of major shippers Int.
- etc. – others are welcome!

Objective 1 : create a security standard for truck parking sites

- 
- | | | |
|---|-----------------|---|
| 1 | Basic security | Limited security for lower value cargo and lower risk areas |
| 2 | Medium security | Adequate level for medium value cargo and higher risk areas |
| 3 | High security | High standard for very valuable cargo and high risk areas |

Objective 2 : pilot sites (to test the standard)

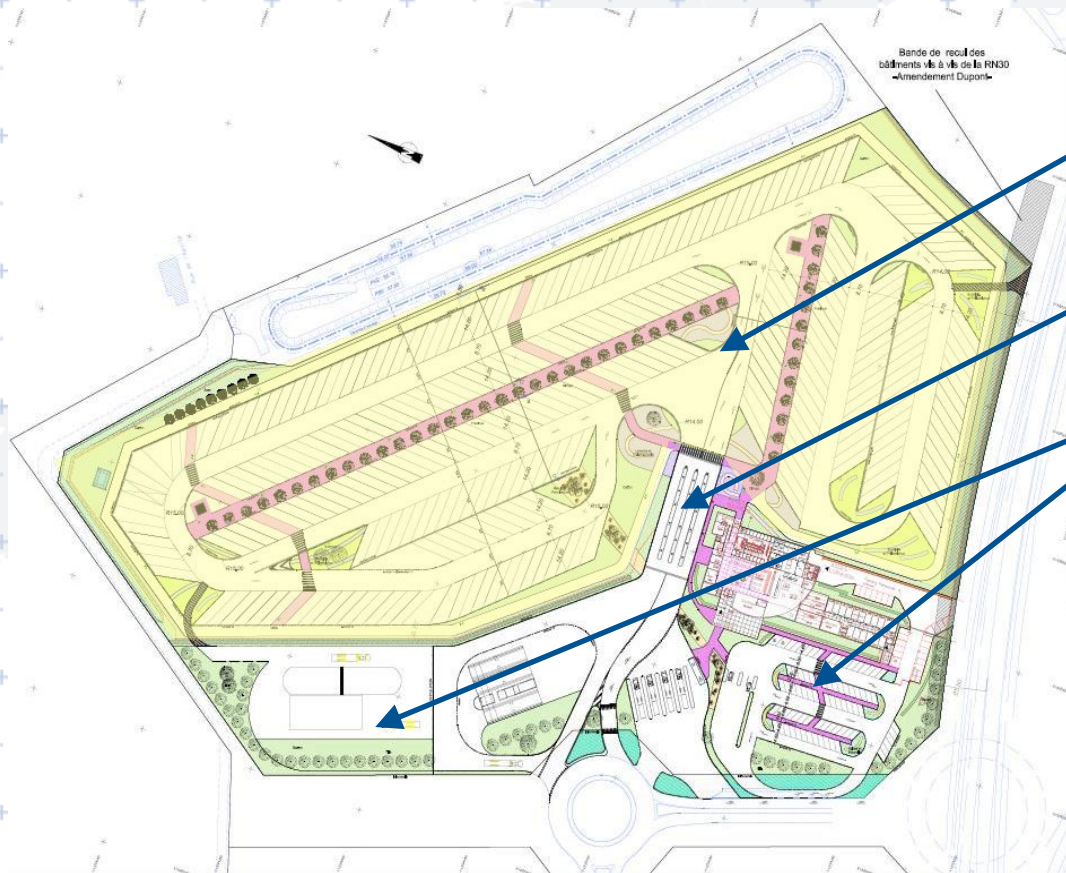
Where	Who	Characteristics	No of secured spaces
FR Valenciennes	Groupe Truck Etape, Vinci	New site	250
GB — Main motorway to Dover and the Tunnel	Ashford Truck Stop	Improved	300
DE near Ulm, Heilbronn	Autohof Wörnitz	Upgraded/new	30
DE — Motorway Hannover-Berlin	Rasthof Uhrsleben	Upgraded/new	60
BE near Liège	VP Pneus Truck Stop	New site	300

Site Example : Truck Etape Valenciennes, FR



View from HGV entrance

Site Example : Truck Etape Valenciennes 2



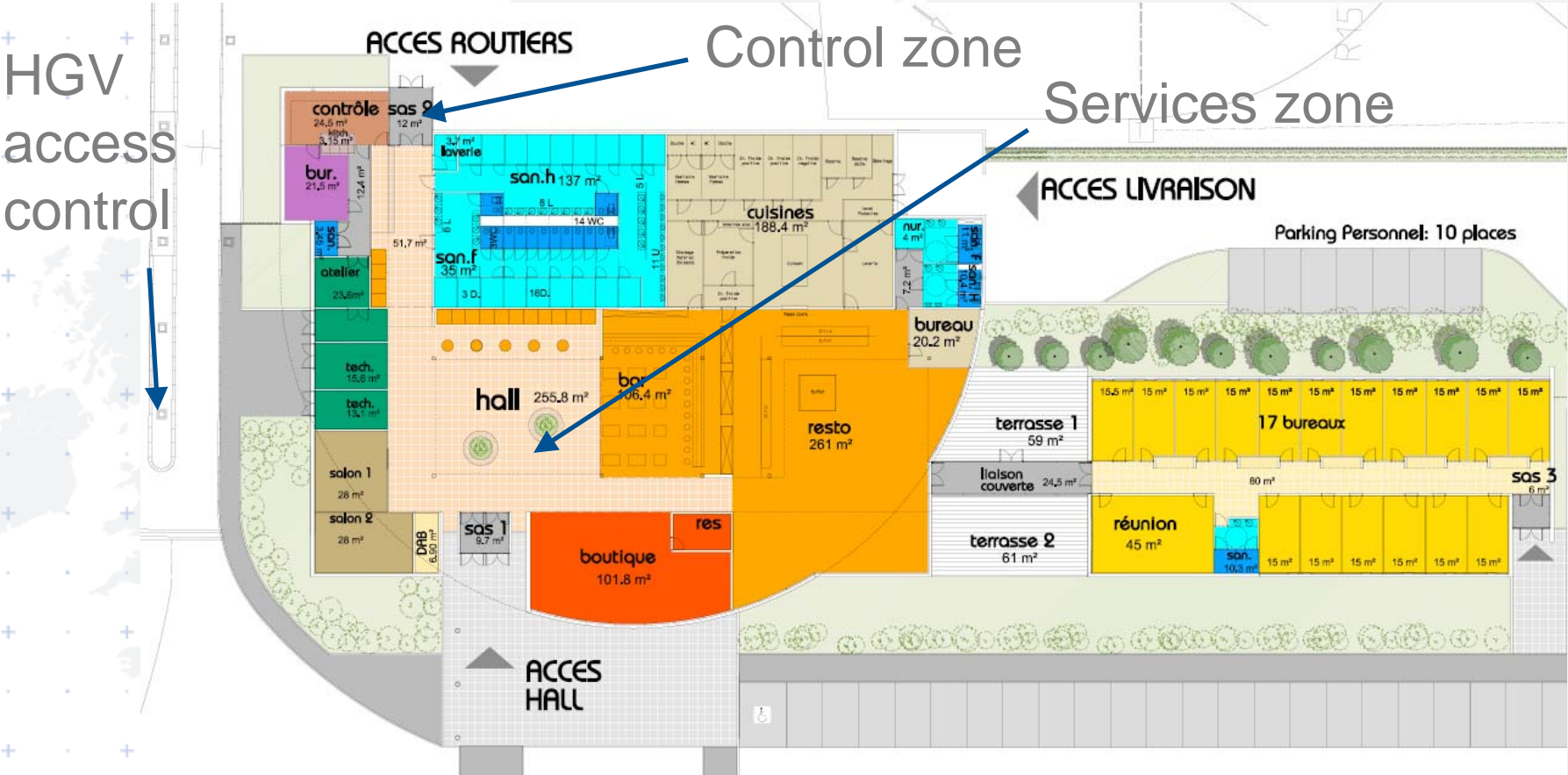
Secured area

Access control

Services zone

Parking scheme

Site Example : Truck Etape Valenciennes 3



Building permit detailed plans

Site Example: Uhrsleben, DE

- Site opened October 2008
- First secured parking area in Germany
- Identification of driver and vehicle
- Access after inspection of vehicle
- Sealing of trailer / container
- CCTV monitoring
- Secured recording
- Driver access with cards



Site Example: Uhrsleben 2



Objective 3 of SETPOS: European Information Portal

service 3

enables booking — either en route or in advance — thus enhancing security, and improving convenience

a reservation system — via call centre, mobile phone, and the internet — to secure parking space,

RESERVATION

service 2

systematically gather and re-distribute dynamic/actual parking data

a collection of as much as possible truck parking dynamic availability data, and its communication to users (drivers, dispatchers)

AVAILABILITY;
GUIDANCE

service 1

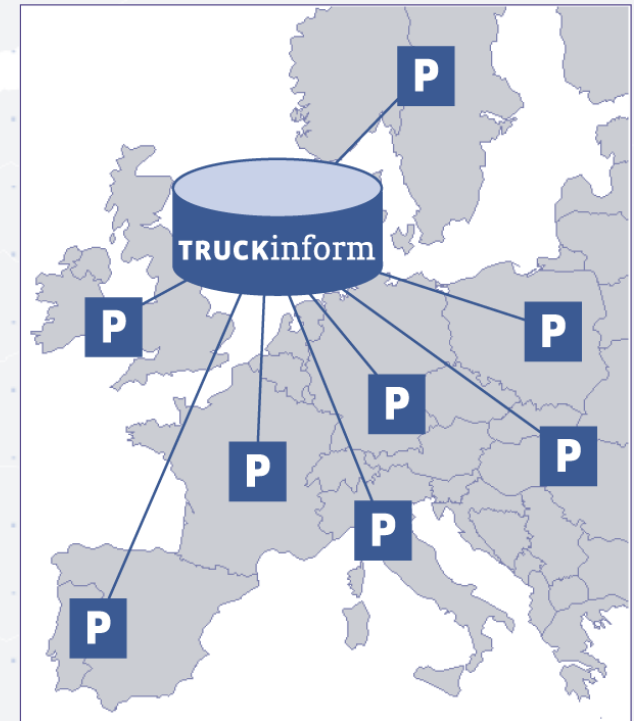
the point of reference for drivers, dispatchers, truckers, forwarders, shippers...

a database holding all relevant and up-to-date static information on truck parking throughout Europe

INFORMATION:
EUROPEAN TRUCK
PARKING DATABASE

Service 1 : truck parking information

One unified, comprehensive, up to-date and reliable inventory of all European rest areas



all available truck parking information,
from printed and other sources

...on one single portal

Illu 1 of 3: Where? Free? Reserve?

You are here: [HOME](#) → [ADVANCED PARKING SEARCH](#) → [SEARCH RESULT](#)



[VIEW RESULTS ON A TABLE](#)

[REFINE SEARCH CRITERIA](#)

[NEW ADVANCED SEARCH](#)

Illu 2 of 3: List with main data

You are here: [HOME](#) → [ADVANCED PARKING SEARCH](#) → [SEARCH RESULT](#)



Location	Name / Operator	P	€	⚠	24	🛢	🚰	🛒	📄
1 A2	Luzern-Neuenki... info@luzerner-r...	50 places 38 free	?	36.68 km	24		🚰		MORE INFO
2 A81 38 Geisingen	B31 Richtung Fr... sp_DE01@truc...	30 places NOW FULL	?	35.56 km	24	🛢	🚰	🛒	MORE INFO RESERVE
3 E41	Kemphal-Süd sp_DIV04@truc...	34 places 12 free	?	15.18 km	24	🌞	🚰		MORE INFO RESERVE
4	Albruck, B34 sp_DE03@truc...	?	?	38.75 km	24		🚰		MORE INFO
5 E60	Raststätte Forre... nfo@autogrill.ch	32 places 10 free	?	22.85 km	24		🚰		MORE INFO RESERVE
6 A1 58 Dietikon	Dietikon Industrie dieikon-silberm...	4 places	?	11.86 km	24				MORE INFO

[VIEW RESULTS ON MAP](#)

[REFINE SEARCH CRITERIA](#)

[NEW ADVANCED SEARCH](#)

Illu S1, 3 of 3: Details per site



[VIEW RESULTS ON A TABLE](#)

[REFINE SEARCH CRITERIA](#)

[NEW ADVANCED SEARCH](#)

Aire de la Sentinelle, A2/A23

undefined, 59300 Valenciennes, France

Valenciennes North

[PARKING](#)

[PETROL STATION](#)

[RESERVAION](#)

[RESERVE](#)

Parking

null

- ▶ Toilets
- ▶ Showers
- ▶ Parking
- ▶ Security & Safety
- ▶ Medical Assistance
- ▶ Other Services Nearby
- ▶ Detailed Information
- ▶ Communications

[About Truckinform](#) | [Contact Us](#)

Service 2 : truck parking availability

Dynamic and up-to-date information about available parking places



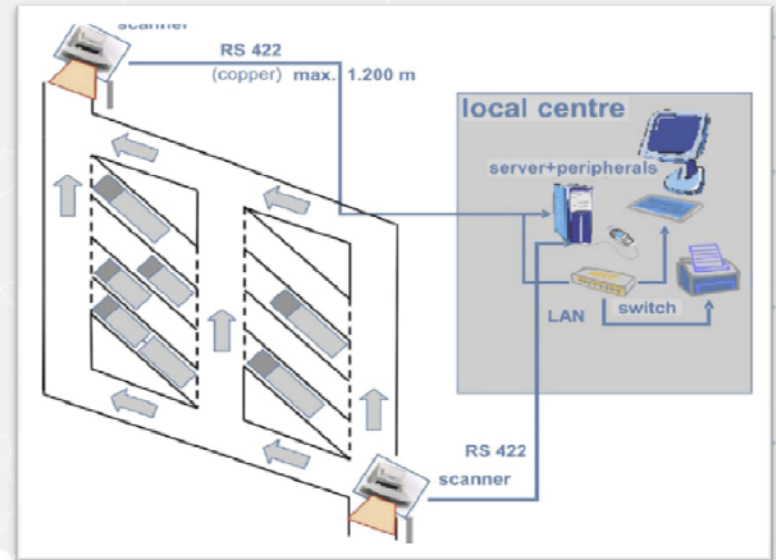
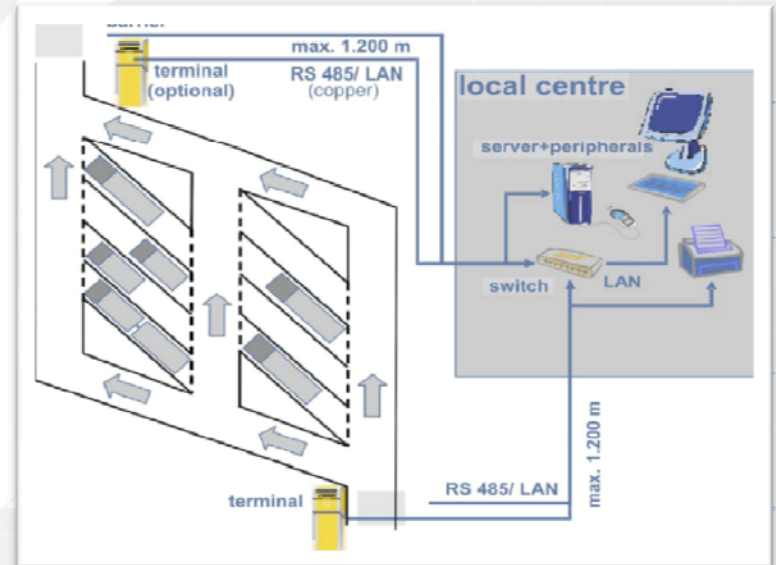
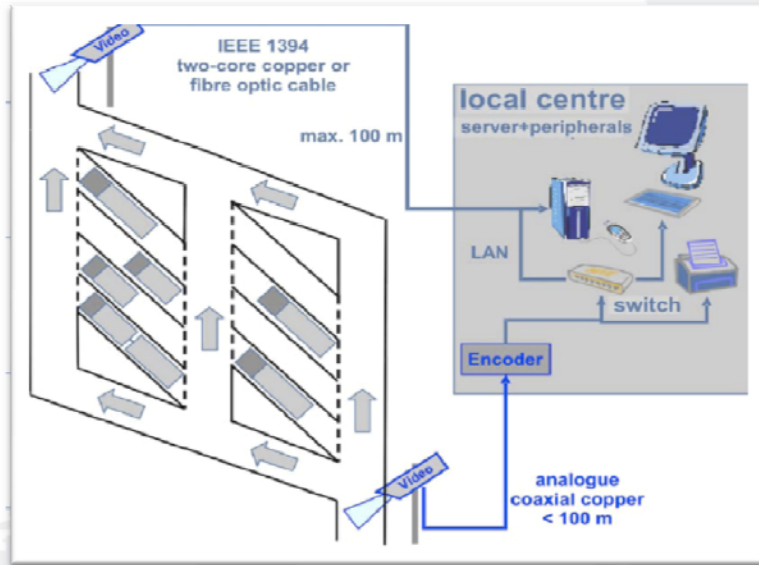
truck stop B:
full

rest area 2:
only 5 spaces available

truck stop A:
full, or no data

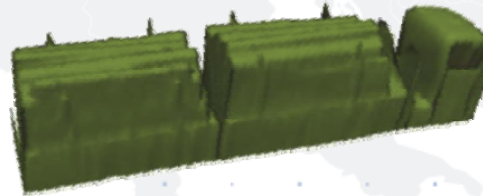
rest area 1:
10 spaces available

Indirect truck detection at parking sites



↑ video number plate reading
terminals and barriers ↗

→ laser scanner →

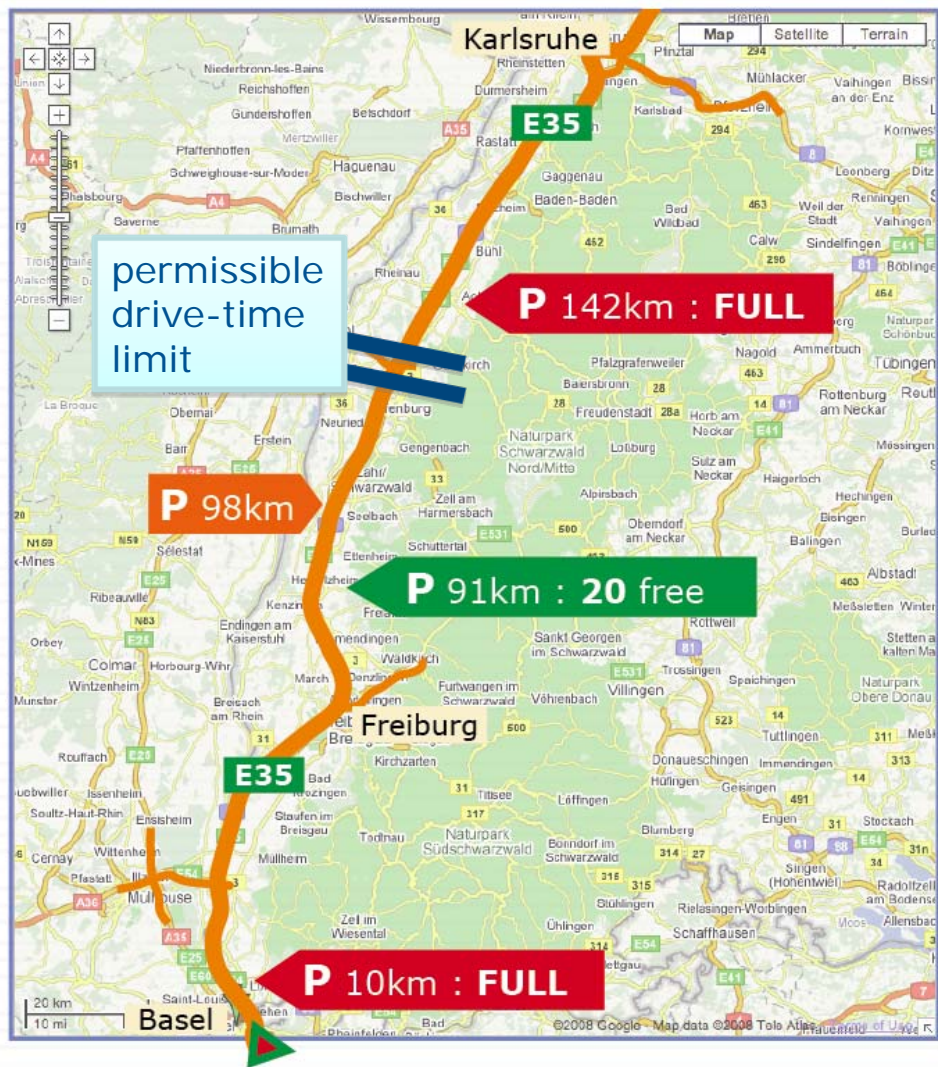


Examples of dynamic data indication



Service 2 : How to plan rest time?

Dynamic and up-to-date information about available parking places



parking places marked in:

- red, means full
- green, available parking
- orange, no quality data

the display can show a mark depicting an estimation of how far the driver can go, before exceeding the obligatory drive-time limit

Service 3 : truck parking reservation

1. booking via SMS, OBU, internet, call centre..., is transmitted to platform

2. reservation transmitted from the platform to truck park terminal

3. enter/exit:
– identification
– time stamp
– payment



Service 3 : 5 methods to choose from by TPAs

1. manual access control by warden I — without driver receipt
2. manual access control by warden II — with driver receipt
3. barrier, with connection to Truckinform
4. LPMS system, connected to Truckinform
5. with transponder/RFID installation

LPMS means local park management system

RFID means radio frequency identification

Service 3 : Drivers / dispatchers

Reservation via:

- Call centre
- Web browser
- Fleet management equipment



L A B E L

Creating a Label for (Secured) Truck Parking Areas along the Trans-European Road Network and Defining a Certification Process. Including an Online Information Facility



LABEL facts

Full title : Creating a Label for (Secured) Truck Parking Areas along the Trans-European Road Network and Defining a Certification Process. Including Online Information Facility.

Acronym : LABEL (a “Blue Flag” Scheme for Rest Areas)

Total project cost : € 2,733.079

Objectives

- Validate existing draft international standards for adequate facilities for professional drivers
- At least 70 sites certified in at least 10 member states

Work split

- Advisory Board - made up of Members of Interest Groups
- Operational Group - partners defining the ‘standards’ and carrying out the certification operation

LABEL main elements

- objectives**
- I. Validate existing draft international standards for adequate facilities for professional drivers
 - II. At least 70 sites certified in at least 10 member states
-

- work split**
- I. Advisory Board
(made up of Members of Interest Groups)
 - II. Operational Group
(partners defining the 'standards' and carrying out the certification operation)
-

run time 21 months

framework

DATABASE

every element, or “attribute” which is installed at a truckstop/service rest area is entered into the database AND quantified therein

Example: 2 showers = 3 points in section “A. comfort & dignity”

Result: the database calculates and outputs differentiated rating

PARKING SITES DATABASE

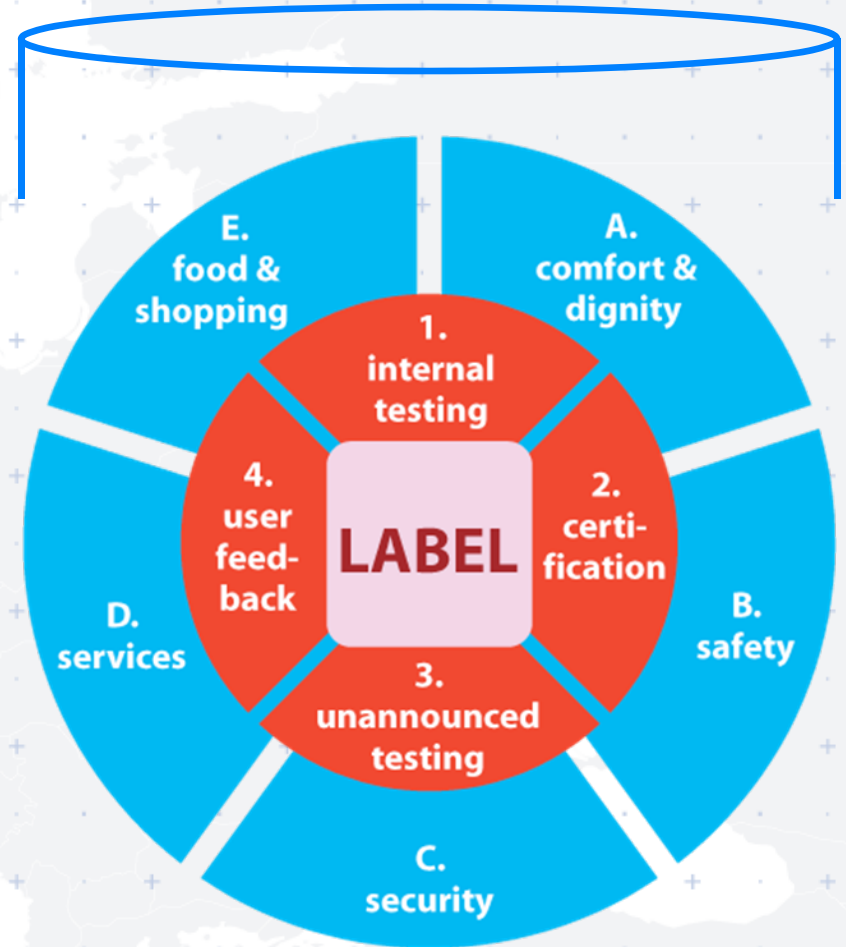


illustration of user web interface

The screenshot shows a web browser window with the address bar displaying 'fhttp://labelCert.eu'. The page content includes the 'LABEL certification portrait' logo, a 'back to TRUCKinform' button, and details for the facility 'Radlje ob Dravi' located at 'Bd. Tomis 221, Bl.TS11B, 900647 Tzinalia, Romania'. The facility's certification level is shown as '3 of 5' and its computer certification score as '69 of 100'. It also lists adherence to testing and certification instruments: 'STRUCTURED INTERNAL TESTING REGIME' (YES), 'EXTERNAL CERTIFICATION' (YES), 'UNANNOUNCED SECRET TESTING' (YES), and 'PUBLISHED USER FEEDBACK AND RATINGS' (NO). Further information links for 'management', 'media', 'memberships', and 'future plans' are provided at the bottom.

← → ↻ × 🏠 fhttp://labelCert.eu

LABEL certification portrait [back to TRUCKinform](#)

Radlje ob Dravi
Bd. Tomis 221, Bl.TS11B, 900647 Tzinalia, Romania

This facility has a:
CERTIFICATION LEVEL of **3** of 5 [< explain](#)

COMPUTER CERTIFICATION SCORE of **69** of 100 [< explain](#)

This facility adheres to the following Testing & Certification Instruments... [< explain](#)

STRUCTURED INTERNAL TESTING REGIME YES	EXTERNAL CERTIFICATION YES	UNANNOUNCED SECRET TESTING YES	PUBLISHED USER FEEDBACK AND RATINGS NO
--	---	--	--

Further information, as supplied by the facility...

[management](#) [media](#) [memberships](#) [future plans](#)

Synergies: combining Truckinform Services 1,2 and LABEL

- name of Truck Parking Area on sign outside facility →
- Service 1 : information →
- Service 2 : parking availability →

▪ text customisable by Truck Park Area →

- LABEL rating: in this example
 - 3 points for security
 - 2 for “quality” →



Summary

■ SETPOS

- Set security standard
- 5 pilot sites
- Information, guidance and reservation portal for ALL sites



■ LABEL

- ‚blue flag‘ certification scheme looking at
 - Comfort&dignity
 - Safety
 - Security
 - Services
- Pilots with 70 sites in 10 – 20 countries



Main Challenges

- Gain the interest of the motorway companies – public and private – as well as of other stakeholders to help improve the situation by
 - providing data
 - putting up infrastructure to capture dynamic availability data
 - upgrading (certain) parking sites for security and reservation
- Ensure that the Truckinform Services 1, 2 and 3, in combination with LABEL, become known to truck parking site operators, drivers and dispatchers.
- Use the Truckinform platform to improve on safety (resting time planning) and security (where to park with what goods), but also making better use of infrastructure; less environmental stress: less search traffic.



LABEL

Thank you!

