



**Economic and Social
Council**

Distr.
RESTRICTED

ExG/COMP/2002/1
15 January 2002

Original: ENGLISH ONLY

ECONOMIC COMMISSION FOR EUROPE

INLAND TRANSPORT COMMITTEE

Working Party on Customs Questions
affecting Transport

Informal Ad hoc Expert Group on Conceptual and
Technical Aspects of the Computerization of the TIR Convention
(24-25 January 2002,
agenda item 4 (a))

**INFORMAL AD HOC EXPERT GROUP ON
CONCEPTUAL AND TECHNICAL ASPECTS OF THE
COMPUTERIZATION OF THE TIR PROCEDURE**

Activities of the informal ad hoc group

Analysis of data elements

Note by the secretariat

A. Introduction

1. At its ninety-ninth session, the Working Party on Customs Questions affecting Transport, mandated the secretariat to organize, *inter alia*, meetings of an informal ad hoc expert group which should study the conceptual and technical aspects of the computerization process of the TIR Convention, including the financial and administrative implications of its introduction, both at the national and at the international level, and prepare a draft set of electronic messages to allow for an interchange of electronic data, nationally, between Contracting Parties and with international organizations (TRANS/WP.30/198, para. 67).

2. In order to structurize the work of the expert Group, the secretariat has drawn up document ExG/COMP/2001/3, which contains an overview of all data elements in the current

TIR Carnet (with the exception of the data in the certified report). Document 1 (2002), which consists of two parts, should be read in connection with the above-mentioned document.

B. PART I: DATAFIELDS IN THE TIR CARNET

3. Part 1 of the document tables the data fields which are available in the TIR Carnet, giving for each of them the following information:

N°	Field number (incremental)
DATA FIELD	Field name
DATA ENTITY	Entity to which the field is related (for example: all data elements referring to the information in the goods manifest are grouped as the entity "goods manifest")
REMARKS	Additional information if the field name requires further clarification
FIELD USE	Indicates if the field serves an informative purpose or has a security or validation role (in a computerized TIR Carnet the security/validation fields will be replaced by security features)
REFERENCE IN CONVENTION (other than Annex 1)	Reference to the TIR Convention
FILLED IN BY	Actor filling in the field
USED BY	Actor using the information in the field
PAPER CARNET	Indicates where the field appears in the current TIR carnet
CARDINALITY	Indicates the minimum and maximum times a certain field can occur in the TIR Carnet
W / RW	Indicates the writing status of the field: 'W' (write once) indicates that the information cannot be overwritten and 'RW' (rewritable) indicates that the information can be changed. In the current TIR Carnet the information is struck out and the changes are validated by Customs (stamp, signature). The computerized version will have to retain the history of the changes of a rewritable field, enabling authorised users to update it.
ITDB	Information available in the ITDB
SafeTIR	Information reported to the SafeTIR-system, in line with the Recommendation of 20 October 1995

No	DATA FIELD	DATA ENTITY	REMARKS	FIELD USE ¹	REFERENCE IN CONVENTION (other than Annex 1)	FILLED IN BY ²	USED BY ²	PAPER CARNET ³	CARDINALITY ⁴	W / RW ⁵	ITDB	SAFETIR
1	International organization name	International Organization		I		Int		C; V1; V2; V12	I:1	W		
2	International organization signature	International Organization	Signature of the secretary of the international organization	S		Int		C	I:1	W		
3	Association name	Association	Name of association which has issued the TIR Carnet	I	Art. 6, Annex 9	Int/Asso	all	C	I:1	W	Yes	
4	Association stamp	Association	Stamp of the issuing association	S		Asso	OoDep	C	I:1	W		
5	Association signature	Association	Signature of authorized official of the issuing association	S		Asso	OoDep	C	I:1	W		
6	Holder name	Holder	Name of holder of the TIR Carnet	I		Asso	all	C; V1; V2; V12	I:1	W	Yes	
7	Holder address	Holder	Address of holder of the TIR Carnet	I		Asso	all	C; V1; V2; V12	I:1	W	Yes	
8	Holder country	Holder	Country of holder of the TIR Carnet	I		Asso	all	C; V1; V2; V12	I:1	W	Yes	
9	Holder ID Number	Holder	ID number for TIR Carnet holders being persons which have been authorized to utilize TIR Carnets in accordance with Annex 9, Part II	I/S	Recommendation 20 October 2000	Asso/Holder		C; V1; V2; V12	I:1	W	Yes	
10	TIR Carnet reference number	TIR Transport	10 digit alpha-numeric code	I/S		Int	all	C; V1; V2; V12; CF1; CF2	I:1	W		Yes
11	Barcode	TIR Transport	Bar-coded 10 digit alpha numeric code	I/S		Int	all	C; V1; V2;	I:1	W		

No	DATA FIELD	DATA ENTITY	REMARKS	FIELD USE ¹	REFERENCE IN CONVENTION (other than Annex 1)	FILLED IN BY ²	USED BY ²	PAPER CARNET ³	CARDINALITY ⁴	W / RW ⁵	ITDB	SAFETIR
12	Validity	TIR Transport	Final date up to which TIR Carnet can legally be accepted by Customs	I	Art. 9,1	Asso	OoDep/Entry; Asso; Int	C	1:1	W		
13	Country of departure	TIR Transport	Country (max 3 countries) where the actual TIR transport starts (countries of departure and destination must not exceed 4)	I	Art. 18	Holder	all	C; V1; V2; V12	1:3	W		
14	Country of destination	TIR Transport	Country (max 3 countries) where the goods will be unloaded (countries of departure and destination must not exceed 4)	I	Art. 18	Holder	all	C; V1; V2; V12	1:3	W		
15	Vehicle registration	TIR Transport	Registration number of the vehicle	I		Holder	OoDep/Entry OoExit/Des OoDis	C; V1; V2; V12	1:1	W		
16	Certificate of approval No	TIR Transport	Number of the vehicle's certificate of approval	I	Art. 14	Holder	OoDep/Entry	C	1:1	W		
17	Certificate of approval Date	TIR Transport	Date of the vehicle's certificate of approval	I	Art. 14	Holder	OoDep/Entry	C	1:1	W		
18	Identification number(s) of container(s)	TIR Transport		I		Holder	OoDep/Entry	C	1:n	W		
19	Various observations	TIR Transport		I		Holder	all	C	1:1	W		
20	Holder's signature	TIR Transport	Signature of the TIR Carnet holder	S		Holder	all	C	1:1	W		

No	DATA FIELD	DATA ENTITY	REMARKS	FIELD USE ¹	REFERENCE IN CONVENTION (other than Annex 1)	FILLED IN BY ²	USED BY ²	PAPER CARNET ³	CARDINALITY ⁴	W / RW ⁵	ITDB	SAFETIR
21	Customs offices of departure	TIR Transport		I	Art. 18	Holder	OoDep/Entry OoExit/Des; OoDis	V1; V2; V12	1:3	W		
22	Documents attached to the manifest	TIR Transport		I	Art. 19	Holder	OoDep/Entry OoExit/Des; OoDis	V1; V2; V12	0:n	RW		opt.
23	Load compartment(s) or container(s)	Goods manifest		I	Art. 19	Holder	OoDep/Entry OoExit/Des; OoDis	V1; V2; V12	1:n	RW		
24	Marks and Nos. of packages of articles	Goods manifest		I	Art. 19	Holder	OoDep/Entry OoExit/Des; OoDis	V1; V2; V12	1:n	RW		
25	Number of packages or articles	Goods manifest		I	Art. 19	Holder	OoDep/Entry OoExit/Des; OoDis	V1; V2; V12	1:n	RW		
26	Type of packages or articles	Goods manifest		I	Art. 19	Holder	OoDep/Entry OoExit/Des; OoDis	V1; V2; V12	1:n	RW		
27	Description of goods	Goods manifest		I	Art. 19	Holder	OoDep/Entry OoExit/Des; OoDis	V1; V2; V12	1:n	RW		
28	Gross weight in kg	Goods manifest		I	Art. 20	Holder	OoDep/Entry OoExit/Des; OoDis	V1; V2; V12	1:n	RW		

No	DATA FIELD	DATA ENTITY	REMARKS	FIELD USE ¹	REFERENCE IN CONVENTION (other than Annex 1)	FILLED IN BY ²	USED BY ²	PAPER CARNET ³	CARDINALITY ⁴	W / RW ⁵	ITDB	SAFETIR
29	Destination office	TIR Transport		I		Holder	OoDep/Entry OoExit/Des; OoDis	V1; V2; V12	1:3	RW		
30	Number of packages for destination	TIR Transport		I		Holder	OoDep/Entry OoExit/Des; OoDis	V1; V2; V12	1:3	RW		
31	Holder certification place	TIR Transport		I		Holder	OoDep/Entry OoExit/Des; OoDis	V1; V2; V12	1:1	W		
32	Holder certification date	TIR Transport		I		Holder	OoDep/Entry OoExit/Des; OoDis	V1; V2; V12	1:1	W		
33	Signature of holder/agent	TIR Transport	Certification	S		Holder	OoDep/Entry OoExit/Des; OoDis	V1; V2; V12	1:1	W		
34	Seals or identification marks applied	TIR Transport		I	Art. 19; Art. 24; Art. 34; Art. 35	OoDep/Entr y/Exit/Des	OoDep/Entry OoExit/Des; OoDis	V1; V2; V12; CF1; CF2	1:n	RW		
35	New seals stamp	TIR Transport	Custom Stamp if new seals are applied	S		OoDep/Entr y/Exit/Des	All	V1; V2; V12	1:n	W		
36	Departure office name	TIR Transport	Customs office of departure	I		OoDep	OoExit/Des; OoDis	V1; V2	1:1	W		
37	Departure office signature	TIR Transport	Customs officer's signature (departure)	S	Art. 19	OoDep	OoExit/Des; OoDis	V1; V2	1:1	W		

No	DATA FIELD	DATA ENTITY	REMARKS	FIELD USE ¹	REFERENCE IN CONVENTION (other than Annex 1)	FILLED IN BY ²	USED BY ²	PAPER CARNET ³	CARDINALITY ⁴	W / RW ⁵	ITDDB	SAFETIR
38	Departure date	TIR Transport	Customs office date stamp (departure)	I	Art. 8,4 Art. 9,2	OoDep	OoExit/Des; OoDis	V1; V2	I:1	W		
39	Seals check (entry)	National TIR operation	Seals or identification marks found to be intact at entry or departure	I	Art. 22	OoExit/Des	OoExit/Des/Dis; Asso; Int	V1; V2*; CF1; CF2	I:1	W		
40	Time-limit for transit	National TIR operation		I	Art. 20	OoExit/Des	OoExit/Des; OoDis	V1; V2*	I:1	W		
41	Departure/Entry Custom name	National TIR operation	Registered/ Accepted by the Customs office at	I		OoExit/Des	OoExit/Des; OoDis	V1; V2*; CF1; CF2	I:1	W		Yes
42	Departure/Entry registration number	National TIR operation	Registered by the Customs office under number (Customs ledger)	I		OoExit/Des	OoExit/Des/Dis; Asso; Int	V1; V2*; CF1	I:1	W		Yes
43	Miscellaneous	National TIR operation	Itinerary stipulated, Customs office at which the load must be produced, etc.	I	Art. 20	OoExit/Des	OoExit/Des/Dis; Asso; Int	V1; V2*; CF1	I:1	W		
44	Departure/entry office signature	National TIR operation	Customs officer's signature (departure/entry)	S	Art. 9,2	OoExit/Des	OoExit/Des; OoDis	V1; V2*	I:1	W		
45	Departure/entry date	National TIR operation	Customs office date stamp (departure/entry)	I	Art. 9,2	OoExit/Des	OoExit/Des; OoDis	V1; V2*	I:1	W		
46	Exit/Destination Custom name	National TIR operation	Certificate of discharge (exit/ destination)	I	Art. 10	OoExit/Des	OoExit/Des/Dis; Asso; Int	V2*; CF2	I:1	W		Yes
46	Seals check (exit/destination)	National TIR operation	Seals or identification marks found to be intact at exit or destination	I		OoExit/Des	OoExit/Des/Dis; Asso; Int	V2*; CF2	I:1	W		
47	Number of packages discharged	National TIR operation		I		OoExit/Des	OoExit/Des/Dis; Asso; Int	V2*; CF2	I:1	W		

No	DATA FIELD	DATA ENTITY	REMARKS	FIELD USE ¹	REFERENCE IN CONVENTION (other than Annex 1)	FILLED IN BY ²	USED BY ²	PAPER CARNET ³	CARDINALITY ⁴	W / RW ⁵	ITDB	SAFETIR
48	Reservations	National TIR operation	Indication of existence of reservations	I		OoExit/Des	OoExit/Des/Dis; Asso; Int	V2*; CF2	1:1	W		Yes
49	Exit/Desi office signature	National TIR operation	Customs officer's signature (exit/destination)	S		OoExit/Des	OoExit/Des/Dis; Asso; Int	V2*; CF2	1:1	W		
50	Exit/Desi date	National TIR operation	Customs office date stamp (exit/destination)	I		OoExit/Des	OoExit/Des/Dis; Asso; Int	V2*; CF2	1:1	W		Yes
51	Heavy or bulky goods	TIR Transport	Endorsement of "Heavy or bulky goods" on cover and all vouchers	I	Art. 29-35		All	C, V1, V2, V12	1:1	W		
52	Tobacco and alcohol	TIR Transport		I			All	C, V1, V2, V12	1:1	W		

¹ I : Information ; S : security/validation

² OoDep : Customs office of departure; OoEntry: Customs office of entry en route; OoExit: Customs office of exit en route; OoDes: Customs office of destination;

OoDis: Customs office of discharge; Int : International Organization; Asso : National Association

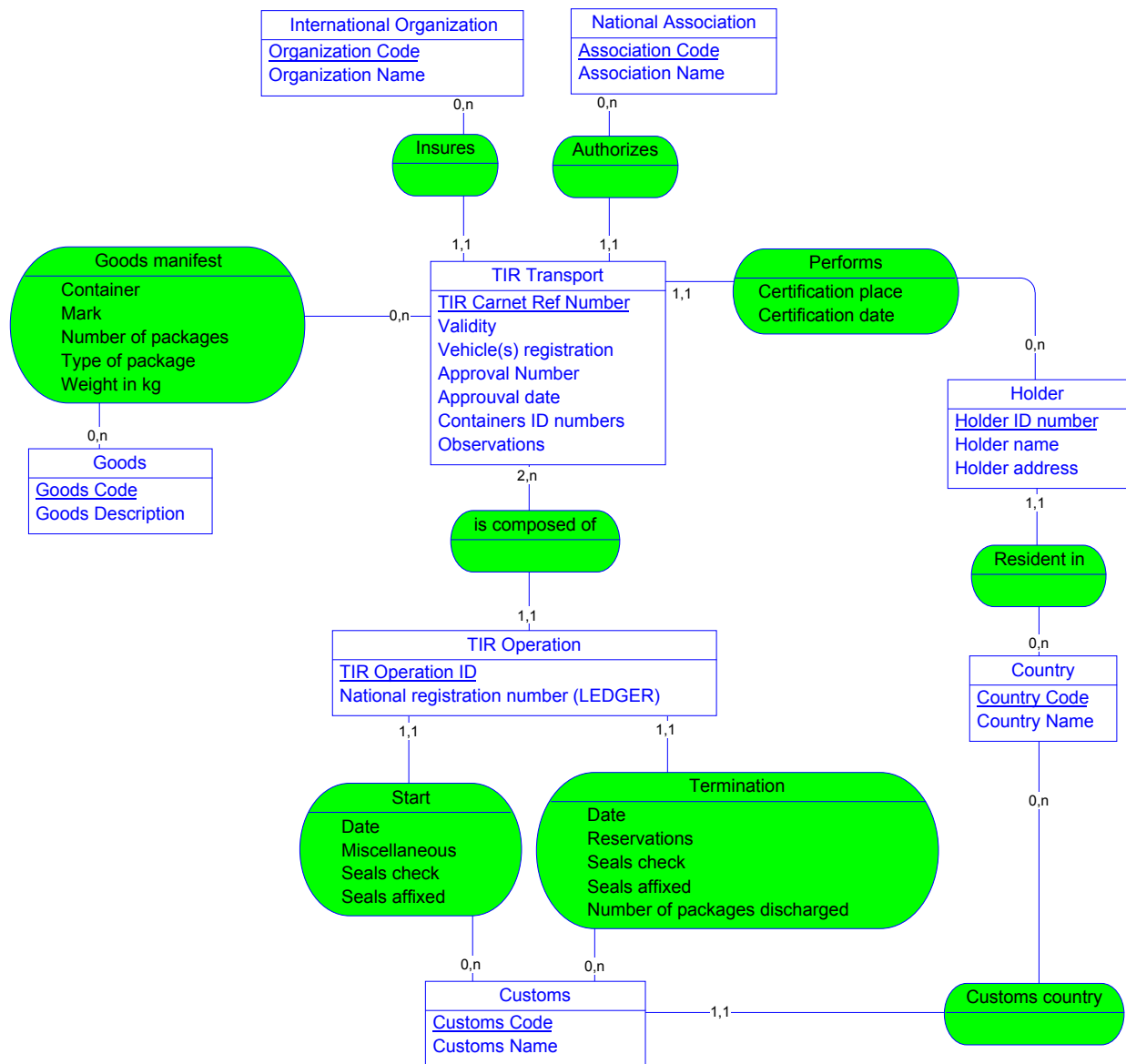
³ C: Cover; V1: Voucher 1; V2: Voucher 2; V12: Voucher 1+2; V2*: Certificate of termination; CF1: Counterfoil 1; CF2: Counterfoil 2

⁴ Number of occurrences of the field in the data entity

⁵ W : Write once ; RW : Rewritable

C. PART 2: DATA MODEL

4. Part 2 presents a conceptual data model, which structures the information contained in the TIR Carnet. The square boxes in the data model reflect the various entities of the TIR procedure, whereas the ovals describe the relationship between them.



D. ACTIVITIES BY THE EXPERT GROUP

5. In preparation for the meeting, the members of the Expert Group are kindly requested to:
 - Study the table carefully, amending and/or adding information where possible, in particular with regard to the columns “Cardinality” and “W / RW”;
 - Comment on the data model in Part 2 of this document.
-