



**KWALITEITS-CONTROLE-BUREAU**

**INSPECTIES**  
**IMPORT EXPORT**  
**FYTO**  
**SIERTEELT**  
**GROENTEN**  
**KWALITEIT FRUIT**



# **K.C.B.**

**Dutch Official Inspection body for import- and export inspections and internal market of Fresh Fruit and Vegetables (FFV)**



**KWALITEITS-CONTROLE-BUREAU**

**INSPECTIES**  
**IMPORT EXPORT**  
**FYTO**  
**SIERTEELT**  
**GROENTEN**  
**KWALITEIT FRUIT**



# Content presentation

- **K.C.B. - organization**
- **Systematics of the K.C.B. inspections**
- **Import inspections**
- **Education and qualification inspectors**



**KWALITEITS-CONTROLE-BUREAU**

**INSPECTIES**  
**IMPORT EXPORT**  
**FYTO**  
**SIERTEELT**  
**GROENTEN**  
**KWALITEIT FRUIT**



# KCB

- **Founded in 1924**
- **Primary task in 1924 → export inspections quality fresh fruits and vegetables**
- **Appointed by Government**
- **Independent**



**KWALITEITS-CONTROLE-BUREAU**

**INSPECTIES**  
**IMPORT EXPORT**  
**FYTO**  
**SIERTEELT**  
**GROENTEN**  
**KWALITEIT FRUIT**



# Accreditation (since 1997)

- **ISO/IEC 17020, type A: certified by Dutch Council for accreditation**
- **Type A, highest level of independency**
- **Quality system**

## Our aim:

- **Guarantees high quality level of inspections**
- **Independency, integrity and high efficiency level**



**KWALITEITS-CONTROLE-BUREAU**

**INSPECTIES**  
**IMPORT EXPORT**  
**FYTO**  
**SIERTEELT**  
**GROENTEN**  
**KWALITEIT FRUIT**

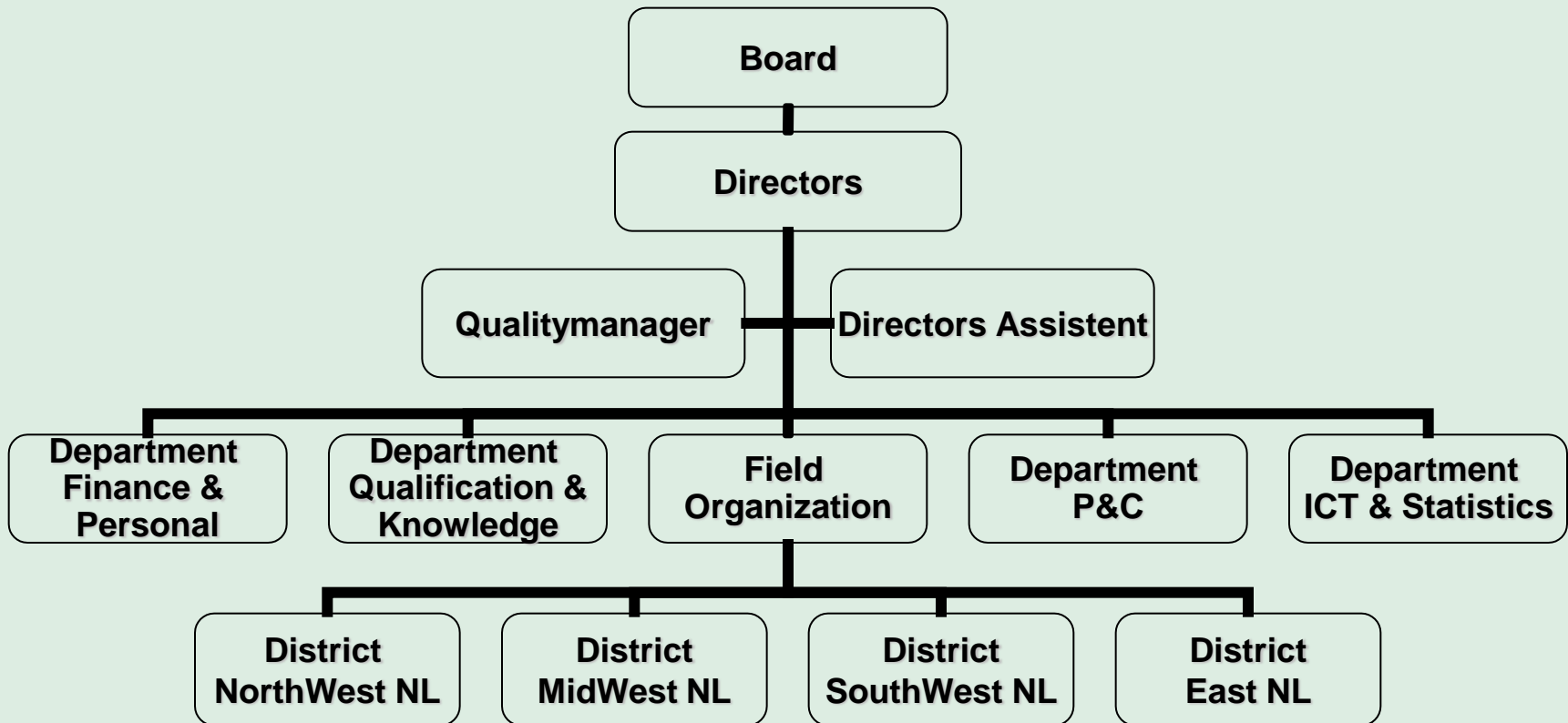


# Current Tasks KCB

- **Only public tasks**
- **Supervision on regulations on quality of fresh fruits and vegetables**
  - **Import and export inspections, monitoring and issuing export certificates**
- **Phytosanitary inspections import and export and issuing Phytosanitary certificates**
  - **Mandate by Ministry of Agriculture, Nature and Food quality**



# Organization chart KCB





**KWALITEITS-CONTROLE-BUREAU**

**INSPECTIES**  
IMPORT EXPORT  
FYTO  
SIERTEELT  
GROENTEN  
KWALITEIT FRUIT



# Department Qualification and Knowledge

## Tasks:

- > education and qualification of the inspectors
- > interpretation of the quality standards
- > “monitoring” product quality issues and quality problems  
(information from traders, markets, growers or information from own inspectors)
- > to order special inspections in case a product shows a poor quality
- > following developments of the industry



**KWALITEITS-CONTROLE-BUREAU**

**INSPECTIES**  
IMPORT EXPORT  
FYTO  
SIERTEELT  
GROENTEN  
KWALITEIT FRUIT



# Statistics KCB 2010

## Import

- **Import shipments (vegetables, fruit, flowers ... .) 186.000**
- **Import reduced checks (only documentary check) 104.000**
- **Physical import checks KCB 82.000**





KWALITEITS-CONTROLE-BUREAU

INSPECTIES  
IMPORT EXPORT  
FYTO  
SIERTEELT  
GROENTEN  
KWALITEIT FRUIT



# Statistics KCB 2010

## Export

- Phytosanitary certificates for export 120.000
- Physical export shipments inspections (Phytosanitary) 41.000
- Quality documents 80.000



KWALITEITS-CONTROLE-BUREAU

INSPECTIES  
IMPORT EXPORT  
FYTO  
SIERTEELT  
GROENTEN  
KWALITEIT FRUIT



# Discussed subjects

- **Quality regulations**
- **Supervision**
- **Quality inspections**
- **Communication EU-countries**



**KWALITEITS-CONTROLE-BUREAU**

**INSPECTIES**  
IMPORT EXPORT  
FYTO SIERTEELT  
GROENTEN  
KWALITEIT FRUIT



# Quality regulations

- **EU Vo 1234/2007: general law**
- **EU Vo 1580/2007: performing inspections**
- **EU Vo 1221/2009: reduction of EU marketing standards**
- **EU Vo 543/2011: Implanting UNECE standards**
- **Dutch Agricultural Quality Law 2007**



KWALITEITS-CONTROLE-BUREAU

INSPECTIES  
IMPORT EXPORT  
FYTO  
SIERTEELT  
GROENTEN  
KWALITEIT FRUIT



# Quality regulations

- Marketing standards?
  - directing international trading (language for trade)
- International regulation:
  - > Brussel - E.U.:
    - 10 products EU **S**pecific **M**arketing **S**tandards
    - other products **G**eneral **M**arketing **S**tandard
  - > Geneve - UNECE:
    - 56 UN/ECE **standards** (not obliged)



**KWALITEITS-CONTROLE-BUREAU**

**INSPECTIES**  
**IMPORT EXPORT**  
**FYTO**  
**SIERTEELT**  
**GROENTEN**  
**KWALITEIT FRUIT**



# Quality regulations

- **Content SMS:**

- **Definition**

- **Provisions:**

- » **Quality (requirements, classification)**

- » **Sizing**

- » **Tolerances**

- » **Presentation**

- » **Marking**



**KWALITEITS-CONTROLE-BUREAU**

**INSPECTIES**  
IMPORT EXPORT  
FYTO  
SIERTEELT  
GROENTEN  
KWALITEIT FRUIT



• **Peaches/nectarine**

• **Table grapes**

• **Apples**

• **Citrus**

• **Pears**



• **Kiwi**

• **Tomatoes**

• **Sweet pepper**

• **Strawberries**

• **Lettuce/ (curled)  
endivia**



KWALITEITS-CONTROLE-BUREAU

INSPECTIES  
IMPORT EXPORT  
FYTO  
SIERTEELT  
GROENTEN  
KWALITEIT FRUIT



# Quality regulations

## Content **GMS**:

- Minimum quality requirements
- Minimum maturity requirements
- Tolerances
- Marking of origine of produce



**KWALITEITS-CONTROLE-BUREAU**

**INSPECTIES**  
**IMPORT EXPORT**  
**FYTO**  
**SIERTEELT**  
**GROENTEN**  
**KWALITEIT FRUIT**



# Quality regulations

## Risk analysis:

- Risk factors: f.e. type company, packing activities?, SMS/GMS, size company;
- Classification based on risk factors;
- Subdivision of companies:
  - Traders of SMS and GMS produce
  - Traders of GMS produce only
  - Authorized traders (RIK)





KWALITEITS-CONTROLE-BUREAU

INSPECTIES  
IMPORT EXPORT  
FYTO  
SIERTEELT  
GROENTEN  
KWALITEIT FRUIT



# Interpretations of standards

- **The department KKB** ( department Qualifications and the authority for training and proficiency) **is responsible for the interpretations based on the EU standards**
- **The interpretations are giving more details explanation about the standards**
- **Interpretations always in deliberation with the sector (traders and growers), but after those opinion the KCB will take a final decision about these interpretations.**



KWALITEITS-CONTROLE-BUREAU

INSPECTIES  
IMPORT EXPORT  
FYTO  
SIERTEELT  
GROENTEN  
KWALITEIT FRUIT



# Interpretations of EU standard *tomatoes*

## KCB-INTERPRETATION ON QUALITY REQUIREMENTS

### A. Minimum requirements

Major defects are:

- open damage
- dark green internal fruit flesh;
- damaged by heavy sunburn

For major defects there is a tolerance till 2 %



KWALITEITS-CONTROLE-BUREAU

INSPECTIES  
IMPORT EXPORT  
FYTO  
SIERTEELT  
GROENTEN  
KWALITEIT FRUIT



# Interpretations of EU standard *tomatoes*

## B. Dividing in classification

**Class I** Allowed is:

- 4 calcium spots
- Very slight hollow fruit:  $\frac{1}{2}$  cm wide till  $\frac{2}{3}$  of the outline
- Very slight bruises
- Slight discoloration without great contrast
- Small scarves of the flowers till  $\frac{2}{3}$  of the diameter
- Slight edge fruit
- Healed small cracks till 1 cm length
- In case of pre packed tomatoes on the vine:
  - > 10 % loose tomatoes



KWALITEITS-CONTROLE-BUREAU

INSPECTIES  
IMPORT EXPORT  
FYTO  
SIERTEELT  
GROENTEN  
KWALITEIT FRUIT



# Interpretations of EU standard *tomatoes*

## B. Dividing in classification

### Class II

Allowed is:

- 10 calcium spots
- hollow fruit till 1 cm wide about the whole outline



**KWALITEITS-CONTROLE-BUREAU**

INSPECTIES  
IMPORT EXPORT  
FYTO  
SIERTEELT  
GROENTEN  
KWALITEIT FRUIT



# Interpretations of the EU-standard *sweet peppers*

## KCB-INTERPRETATION ON QUALITY REQUIREMENTS

### A Minimumrequirements

Major defects are:

- Open damage
- Heavy sunburn
- Broken calyx
- Splitted fruit

For major defects there is a tolerance till 2 %



**KWALITEITS-CONTROLE-BUREAU**

**INSPECTIES**  
IMPORT EXPORT  
FYTO  
SIERTEELT  
GROENTEN  
KWALITEIT FRUIT



# **Interpretations of the EU-standard sweet peppers**

## **KCB-INTERPRETATION ON QUALITY REQUIREMENTS**

### **B Dividing in classification**

#### **Class I Allowed is:**

- very slight calcium spot, 3 spots who are not sinking; one sinking spot
- silver coloration till maximum 50% of the surface of the fruit
- very small corked cracks
- slight misshapen for example small ears
- rised calyx, but without (brown) discoloration of the fruit under the calyx
- slight damaged stalk, excluded the calyx

**For sweet pointed (oblong) paprika: irregular shape is allowed  
curved: 20 % of the length**



KWALITEITS-CONTROLE-BUREAU

INSPECTIES  
IMPORT EXPORT  
FYTO  
SIERTEELT  
GROENTEN  
KWALITEIT FRUIT



# Discussed subjects

- Quality regulations
- **Supervision**
- Quality inspections
- Communication EU-countries



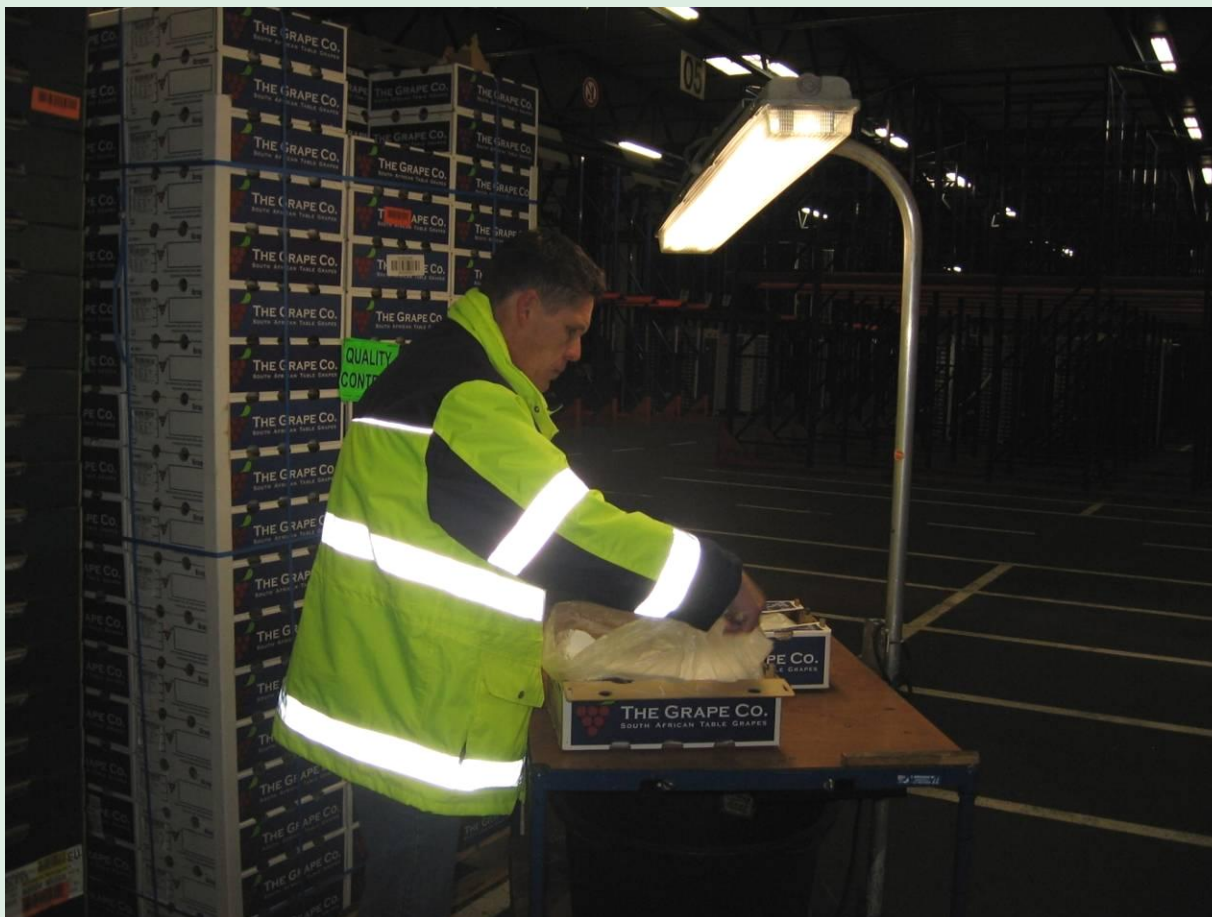


**KWALITEITS-CONTROLE-BUREAU**

**INSPECTIES**  
**IMPORT EXPORT**  
**FYTO**  
**SIERTEELT**  
**GROENTEN**  
**KWALITEIT FRUIT**



# Supervision







**KWALITEITS-CONTROLE-BUREAU**

**INSPECTIES**  
**IMPORT EXPORT**  
**FYTO**  
**SIERTEELT**  
**GROENTEN**  
**KWALITEIT FRUIT**



# Supervision

- **Supervision and inspection of SMS/GMS produce**
- **Focus SMS: all provisions**
- **Focus GMS: serious/internal defects, ripeness, marking**

(based on KCB risk analyses: 70 products)

- **Possibility of disapproval of consignment**
- **Keeping view on product-flows**



KWALITEITS-CONTROLE-BUREAU

INSPECTIES  
IMPORT EXPORT  
FYTO  
SIERTEELT  
GROENTEN  
KWALITEIT FRUIT



# Discussed subjects

- Quality regulations
- Supervision
- **Quality inspections**
- Communication EU-countries



**KWALITEITS-CONTROLE-BUREAU**

**INSPECTIES**  
IMPORT EXPORT  
FYTO  
SIERTEELT  
GROENTEN  
KWALITEIT FRUIT



# Quality inspection

## Conformity check:

- Check if lot is compliant with EU marketing standards
- Check on Document, Identity/marketing:
  - origin, classification, amount, dispatcher
- Physical check on SMS-provisions or GMS
- Sampling procedure



**KWALITEITS-CONTROLE-BUREAU**

**INSPECTIES**  
IMPORT EXPORT  
FYTO  
SIERTEELT  
GROENTEN  
KWALITEIT FRUIT



# Quality inspection

**Performing conformity checks at:**

- 1. Import**
- 2. Internal market (regular system, RIK, surveillance)**
- 3. Export**
- 4. Re-inspection**
- 5. Conformity check after rejections**

**On retail stage: The Food Safety Authority is responsible**



**KWALITEITS-CONTROLE-BUREAU**

**INSPECTIES**  
IMPORT EXPORT  
FYTO  
SIERTEELT  
GROENTEN  
KWALITEIT FRUIT



# Locations of inspections

- **Port of Rotterdam and Vlissingen**
- **Airports ( Amsterdam and Maastricht – Aken)**
- **Auctions**
- **Pack stations**
- **Exporters**
- **Importers**
- **Wholesalers**
- **Growers (in case delivering directly to the market)**



**KWALITEITS-CONTROLE-BUREAU**

**INSPECTIES**  
IMPORT EXPORT  
FYTO  
SIERTEELT  
GROENTEN  
KWALITEIT FRUIT



# Quality inspection

## *Import:*

- 10 SMS: 100%
- 70 GMS: 5-20%
- Produce approved 3<sup>rd</sup> countries: 5%
- Produce authorised traders: 5%
- Issue certificate of conformity



**KWALITEITS-CONTROLE-BUREAU**

**INSPECTIES**  
IMPORT EXPORT  
FYTO  
SIERTEELT  
GROENTEN  
KWALITEIT FRUIT



# Quality inspection

## *Internal market:*

### 1. Regular system

- **Classification of companies**
- **6 types of different visit frequencies**

(2-52 visits yearly)

### 2. Exempted traders (RIK)

- **Auditing system**

### 3. Surveillance

- **Based on signals, disappointing results**



KWALITEITS-CONTROLE-BUREAU

INSPECTIES  
IMPORT EXPORT  
FYTO  
SIERTEELT  
GROENTEN  
KWALITEIT FRUIT



# Quality inspection

## *Export:*

### Issue export certificates

- **Authorised traders: 5% physical checks**
- **Other traders:**
  - **100% check mixed consignments SMS/GMS**
  - **10% check of only GMS consignment**





**KWALITEITS-CONTROLE-BUREAU**

**INSPECTIES**  
IMPORT EXPORT  
FYTO  
SIERTEELT  
GROENTEN  
KWALITEIT FRUIT



# Quality inspection

## Re-inspection:

- Company differs in opinion with KCB report
- Basis is difference in interpretation
- Specialist Quality affairs must be informed
- Performing of new inspection (Specialist Quality Affairs) based upon the marked samples of the first inspection



KWALITEITS-CONTROLE-BUREAU


INSPECTIES  
IMPORT EXPORT  
FYTO  
SIERTEELT  
GROENTEN  
KWALITEIT FRUIT



# Quality inspection

## Conformity check after rejection:

- Non conformity products: rejection
- Report of non conformity
- Inform the trader
- Obligation trader to report back to KCB
- KCB verifies every rejected lot (compliance with marketing standard)

Verklaring van niet conformiteit, als bedoeld in artikel 20, lid 3 van de EG-verordening 1800/2007. Versie januari 2008.		IBP nr.	Nr.
		KWALITEITS - CONTROLE - BUREAU	
Platinaweg 10		's-Gravenhage	
<b>VERKLARING VAN NIET CONFORMITEIT</b>			
Na het uitvoeren van een inspectie op ..... 20..... bleek onderstaande partij groenten of fruit niet te voldoen aan de eisen, die bij krachtens het Landbouwkwaliteitsbesluit zijn gesteld. Het is verboden deze partij te verhandelen. Het vervoeren of verplaatsen van deze partij is slechts toegestaan nadat hiervoor door het Kwaliteitscontrole-Bureau toestemming is gegeven.			
KCB rayonkantoor:			Telefoonnr.
Naam marktleverancier:			KCB nr.
Adres:			soort inspectie
Postcode en vestigingsplaats:			RIK bedrijf J/N
Mondeling medegedeeld aan:			Handtekening bedrijf
Partij identificatie/mark	Product en variëteit		Aangeduide klasse
Aangeduide maats/ortering	Aangeduide inhoud (kg/st)	Aantal colli	Land van herkomst
			Locatie van de partij
			Gewichtscorrectie toegepast J/N
Normaspect	Gemiddelde afwijking	Monster	Monster
KU (=Kwaliteit Uiterwendig)		1	2
KI (=Kwaliteit Inwendig)		3	4
S (=Sortering)		5	6
A (=Aanduiding)		7	8
G (=Gewicht)		9	10
V (=Verpakking)		11	12
		13	14
		15	16
Reden kwaliteitsafkeuring:	Bijzonderheden / opmerkingen:		
Verantwoordelijkheid overgenomen door en gemeld aan:	Naam bedrijf:	Akkoord KCB: J/N*	
Naam functionaris:	Handtekening bedrijf:	Datum:	
		Handtekening inspecteur:	
		Stempel inspecteur	
In geval van een afkeuring buitenlands product G&F, moet een melding van niet-conformiteit worden opgemaakt. Z. o. z. voor vastleggen aanvullende gegevens.			
In te vullen door inspecteur die toestemming geeft om gecorrigeerde partij in de handel te brengen.			
De partij wordt afgeschreven:	colli	restant	Datum:
	colli		Gezien J/N*
	colli		J/N*
	colli		J/N*
	colli		J/N*
De partij gaat (retour) naar:	te	Datum:	Gezien J/N*
Datum vrijgave gehele partij:	te		J/N*
Schriftelijke bevestiging afkeuring:	J/N*		
Controlecertificaat afgegeven:	J/N*		
Vernichte handeling om partij in overeenstemming te brengen:	J/N*		



KWALITEITS-CONTROLE-BUREAU

INSPECTIES  
IMPORT EXPORT  
FYTO  
SIERTEELT  
GROENTEN  
KWALITEIT FRUIT



# Discussed subjects

- Quality regulations
- Supervision
- Quality inspections
- **Communication EU-countries**



**KWALITEITS-CONTROLE-BUREAU**

**INSPECTIES**  
**IMPORT EXPORT**  
**FYTO**  
**SIERTEELT**  
**GROENTEN**  
**KWALITEIT FRUIT**



# Communication EU-countries

- **Non conformity of foreign product: KCB reports to EU and relevant EU-country**
- **Other EU-countries report to KCB about non conformity of Dutch products**
- **To bring non conformity products into conformity in another EU-country: KCB informs inspection body in that EU-country**
- **Harmonisation meetings in SK, UK, DE**



**KWALITEITS-CONTROLE-BUREAU**

**INSPECTIES**  
**IMPORT EXPORT**  
**FYTO**  
**SIERTEELT**  
**GROENTEN**  
**KWALITEIT FRUIT**



# Qualification inspectors

**Education and Qualification of the  
KCB - inspectors.**









**KWALITEITS-CONTROLE-BUREAU**

**INSPECTIES**  
**IMPORT EXPORT**  
**FYTO**  
**SIERTEELT**  
**GROENTEN**  
**KWALITEIT FRUIT**



# General

- **The basic education level for inspectors: School for professional agricultural education.**
- **Knowledge regarding agricultural issues**
- **Experiences with product quality affairs**
- **Applicants with an agriculture or horticulture background, enjoy a preferential treatment**
- **Command of the English language**



**KWALITEITS-CONTROLE-BUREAU**

**INSPECTIES**  
IMPORT EXPORT  
FYTO  
SIERTEELT  
GROENTEN  
KWALITEIT FRUIT



# Start new inspectors

- learning the KCB organization and the several departments at the head office
- information about the history, organization structure etc
- tasks of the KCB
- explanation about the EU legislation
- explanation regarding procedures etc. in the framework of Accreditation
- practical inspections, the first 6 months guided by an experienced inspector





**KWALITEITS-CONTROLE-BUREAU**

**INSPECTIES**  
IMPORT EXPORT  
FYTO  
SIERTEELT  
GROENTEN  
KWALITEIT FRUIT



## **Maintenance qualification for all the inspectors**

- > Annual, 4- 6 days internal training, each will finish with a theoretical and practical examination**
- > Annual audits (on products and quality system) performed by the Specialist for each sphere of work**



**KWALITEITS-CONTROLE-BUREAU**

**INSPECTIES**  
**IMPORT EXPORT**  
**FYTO**  
**SIERTEELT**  
**GROENTEN**  
**KWALITEIT FRUIT**



# Inspectors fitting out

- company car
- PDA (hand held computer)
- reference material (e.g. a book with pictures)
- knife and other small equipment
- several equipment for measuring (rings, temp.)
- weight scale ( 6, 16 or 32 kg)
- refractometer
- penetrometer
- magnifying glass
- box for al the materials
- mobile phone
- industrial clothing
- each own business e-mail address



**KWALITEITS-CONTROLE-BUREAU**

**INSPECTIES**  
**IMPORT EXPORT**  
**FYTO**  
**SIERTEELT**  
**GROENTEN**  
**KWALITEIT FRUIT**



Thank you for your attention

Questions ?

[f.jacobs@kcb.nl](mailto:f.jacobs@kcb.nl)