



UNITED NATIONS ECONOMIC COMMISSION FOR EUROPE
UNITED NATIONS CENTRE FOR TRADE FACILITATION
AND ELECTRONIC BUSINESS (UN/CEFACT)

**REQUIREMENTS SPECIFICATION MAPPING
(RSM)**

Cargo Tracing and Tracking

Approved: UN/CEFACT Bureau Trade and Transport Facilitation PDA

Version: 0.2

Release: 1

Table of Contents

25			
26			
27	1	Status of this document.....	3
28		Document Change History Log	3
29	2	Introduction.....	4
	2.1	AUDIENCE	4
	2.2	REFERENCE DOCUMENTS	4
	2.3	PURPOSE AND SCOPE.....	5
	2.4	TARGET SOLUTION	5
	2.5	CONCEPTUAL MODEL.....	6
30	3	Information Mapping.....	7
	3.1	MESSAGE ASSEMBLY	7
	3.2	AGGREGATE BUSINESS INFORMATION ENTITIES	8
31	3.2.1	Cargo Tracking_ Document.....	8
32	3.2.2	Cargo Tracking_ Transport Movement.....	9
33	3.2.3	Cargo Tracking_ Consignment	12
34	4	Business Information Entity Reference	13
	4.1	AGGREGATE BUSINESS INFORMATION ENTITIES(ABIEs)	13
	4.2	ASSOCIATED BUSINESS INFORMATION ENTITIES(ASBIEs)	14
	4.3	BASIC BUSINESS INFORMATION ENTITIES(BBIEs).....	16
35	5	Associated Documentation	17
	5.1	CORE COMPONENTS UN/CEFACT REGISTRY VERSION USED.....	17
	5.2	DRAFT CORE COMPONENT REFERENCE.....	17
36	6	Additional Information	22
	6.1	DEFINITION OF TERMS.....	22
	6.2	APPENDICES	22
37			
38			
39			
40			
41			
42			
43			
44			
45			

46 **1 Status of this document**

47 **Document Change History Log**

48

Date of Change	Version	Paragraph Changed	Summary of Changes
June. 30, 2011	Version 0.1, Release 1	Initial Draft	Initial Draft
July 13, 2012	Version 0.2, Release 1	Apply the new template	Update

49

50

51 **2 Introduction**

52 With the development of Information and Communication Technology (ICT), world
53 economy has shifted to the Internet-based digital economy. In particular, expansion of the
54 Internet has resulted in rapid globalization of corporate activities and it has causing a
55 paradigm shift in logistics domain with radical change of trade processes and practices.
56 Additionally, business collaboration has emerged as an important issue as multilateral
57 business transaction becomes more dominant than bilateral one. Such a change has urged
58 users to demand cargo tracking service of SCM concept, which enables them to trace the
59 transport flow and the status of goods from the origin to the destination for logistics activities.
60 The purpose of this RSM is to model business processes in logistics activities in accordance
61 with the UN/CEFACT Modelling Methodology and define XML-based data model for
62 “tracing and tracking in cargo transport” on the basis of the defined business models for
63 international standardization.

64 65 **2.1 Audience**

66 The audience of this document is all users who are interested in cargo tracing and tacking
67 information data and logistic process (or algorithm). For example Consignor/Consignee,
68 Shipping line, Trucker, Container Terminals, Government Agents, etc.

69 70 **2.2 Reference Documents**

71 UN/CEFACT Modelling Methodology (CEFACT/TMG/N093)
72
73 UN/CEFACT XML Naming and Design Rules
74
75 UN/CEFACT Core Components Library 10a
76
77 UN/CEFACT ebXML Core Components Technical Specification Version 2.01
78
79 UN/CEFACT Requirements Specification Mapping Documentation Template
80 Guidelines Version 2.0, Release 1.0
81
82 UML Version 2.0
83
84 UN/CEFACT UMM
85
86 UN/EDIFACT Data element directory D.09B
87
88 United Nations Trade Data Elements Directory

89
90
91

92 **2.3 Purpose and Scope**

93 This document describes information model defined in UN/CEFACT BRS (Business
94 Requirements Specification Ver.1) with UML that is object modelling international standard
95 language. Scope of this document is to define information object into standard data model,
96 hereby information object is the defined data used at cargo tracking business process that is
97 collaboration process for business processes of logistics domain. So, this document wrote to
98 propose as international standard.

99 That is, cargo tracking means to check moving flow, status and location of consignment
100 with capturing results of business process(or business transaction) of logistics domain, such
101 as administrative affairs, transportation, loading and unloading, etc. Information model at
102 this point also extracts the necessary items from electronic documents used at each business
103 transaction and defines into XML.

104

105 **2.4 Target Solution**

106 The canonical class diagram of the Cargo Tracking presented in this document should be
107 used to generate the UN/CEFACT ebXML standard schema of the Cargo Tracking in the
108 Logistics domains. This RSM document together with the corresponding BRS document and
109 the ebXML schema are intended to be the basis for the standard Cargo Tracking.

110

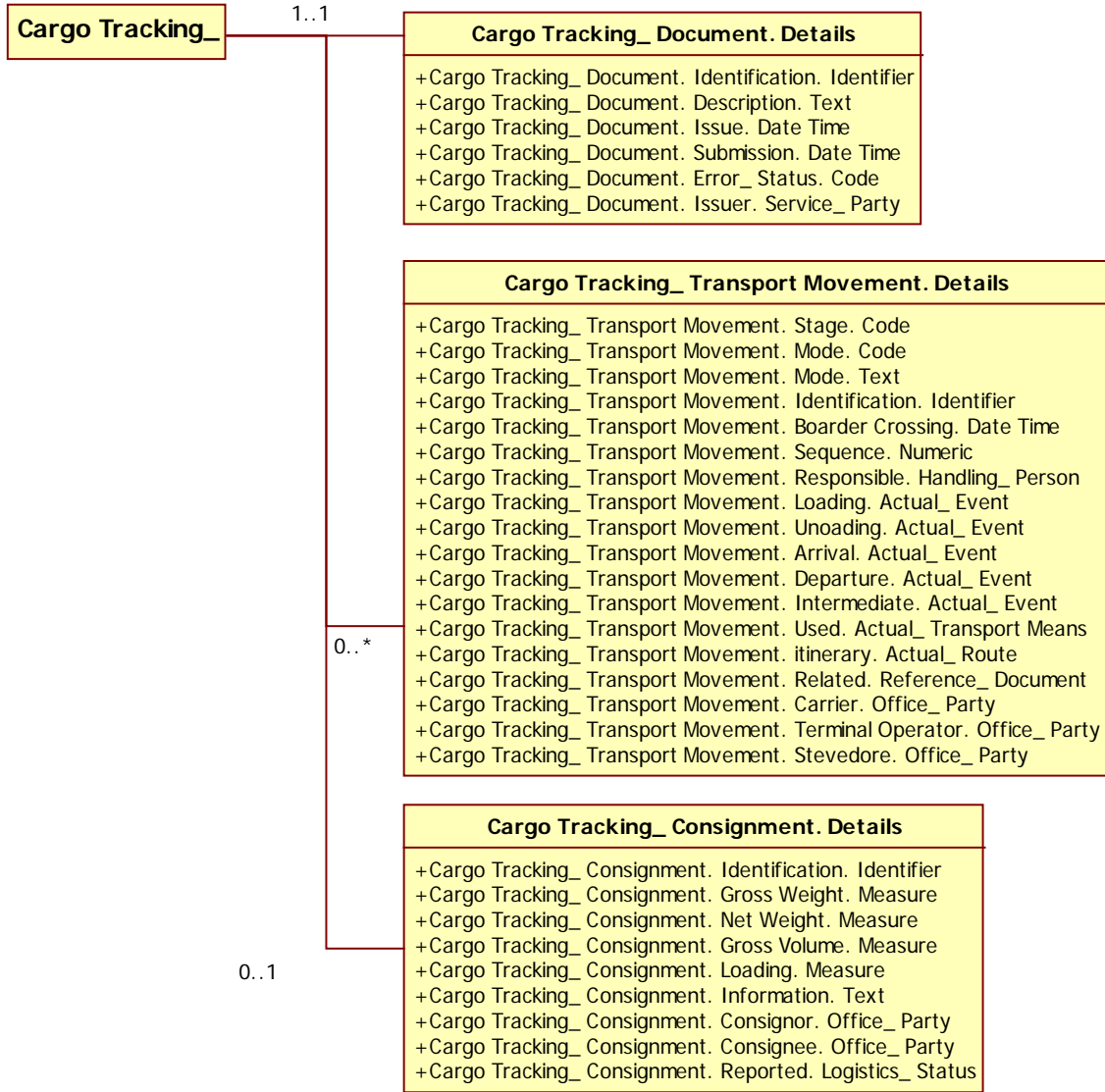
111 - XML Schema

112

113

114 2.5 Conceptual Model

115



116

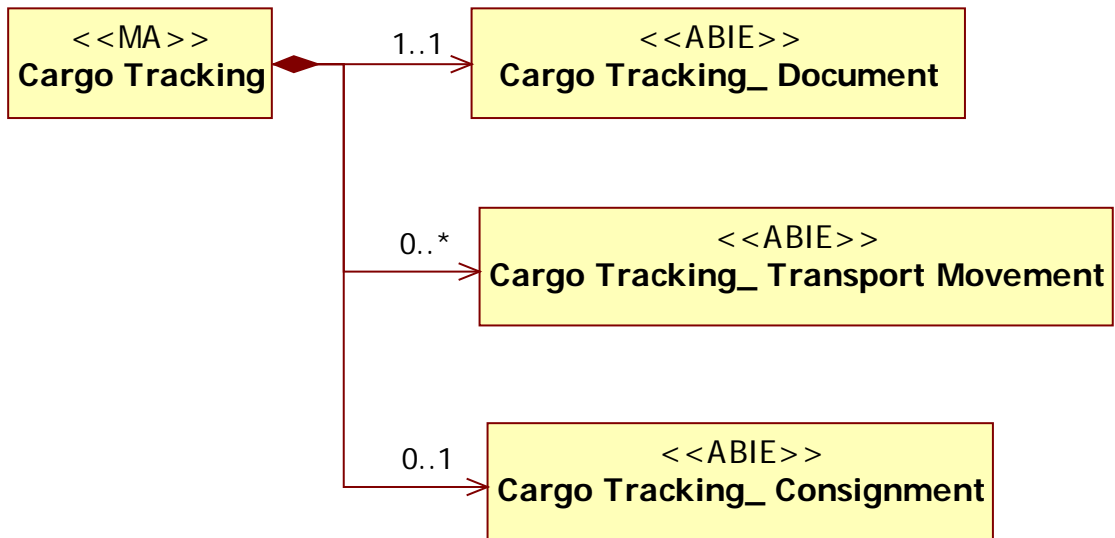
117

118

119 3 Information Mapping

120 3.1 Message Assembly

121



122

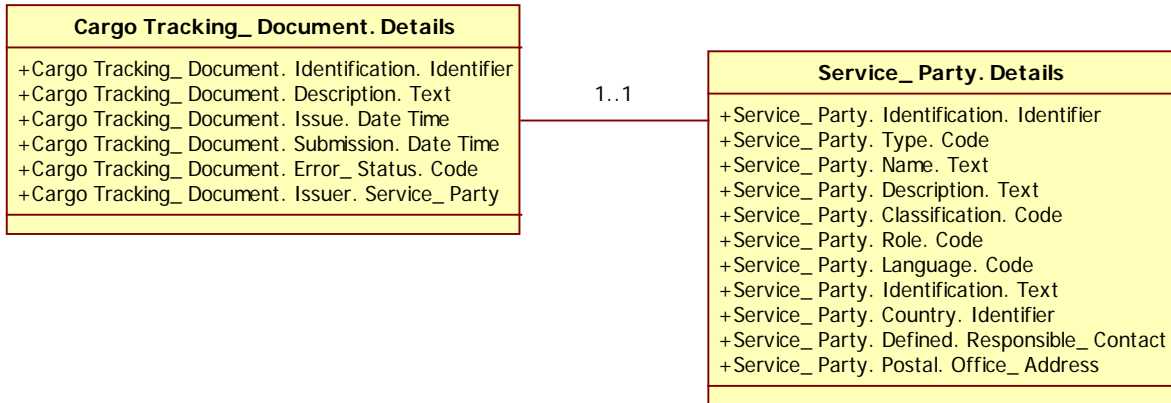
123

124 **3.2 Aggregate Business Information Entities**

125 **3.2.1 Cargo Tracking_ Document**

126 This information is defined that provides occurred tracking information during delivering
 127 consignments via any transport means to the wanted user.

128
 129



130
 131
 132
 133
 134
 135

Occurrence	Element/Attribute
	ABIE Cargo Tracking_ Document. Details
1 .. 1	BBIE Cargo Tracking_ Document. Identification. Identifier Definition: A unique identifier for this document.
0 .. 1	BBIE Cargo Tracking_ Document. Description. Text Definition: A textual description of this document.
1 .. 1	BBIE Cargo Tracking_ Document. Issue. Date Time Definition: The date, time, date time or other date time value for the issuance of this document..
1 .. 1	BBIE Cargo Tracking_ Document. Submission. Date Time Definition: The date, time, date time or other date time value for the formal submission of this document to a receiver by a sender.
0 .. 1	BBIE Cargo Tracking_ Document. Error_ Status. Code Definition: A code specifying a status of a document..
1 .. 1	ASBIE Cargo Tracking_ Document. Issuer. Service_ Party Definition: The conveyance (physical carriage) of people, goods, or other objects from place to place.

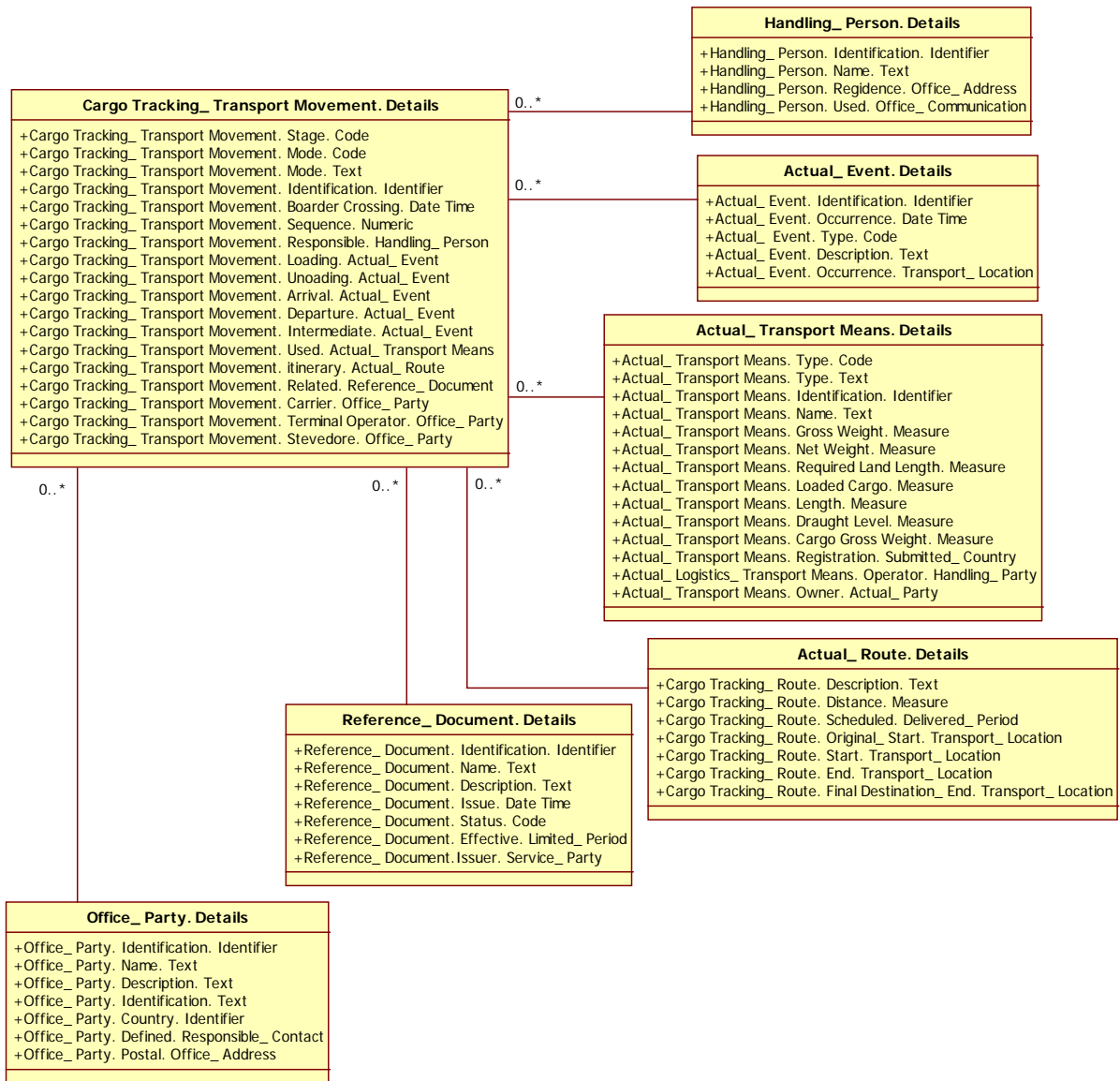
136

137 3.2.2 Cargo Tracking_Transport Movement

138 The conveyance (physical carriage) of people, goods, or other objects from place to place

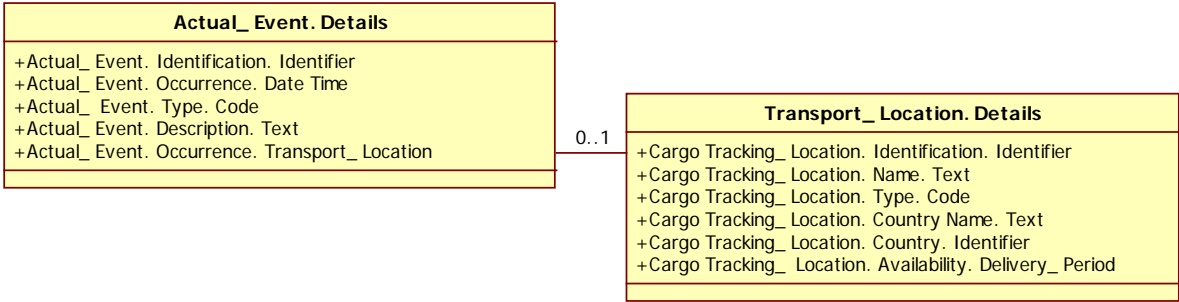
139

140

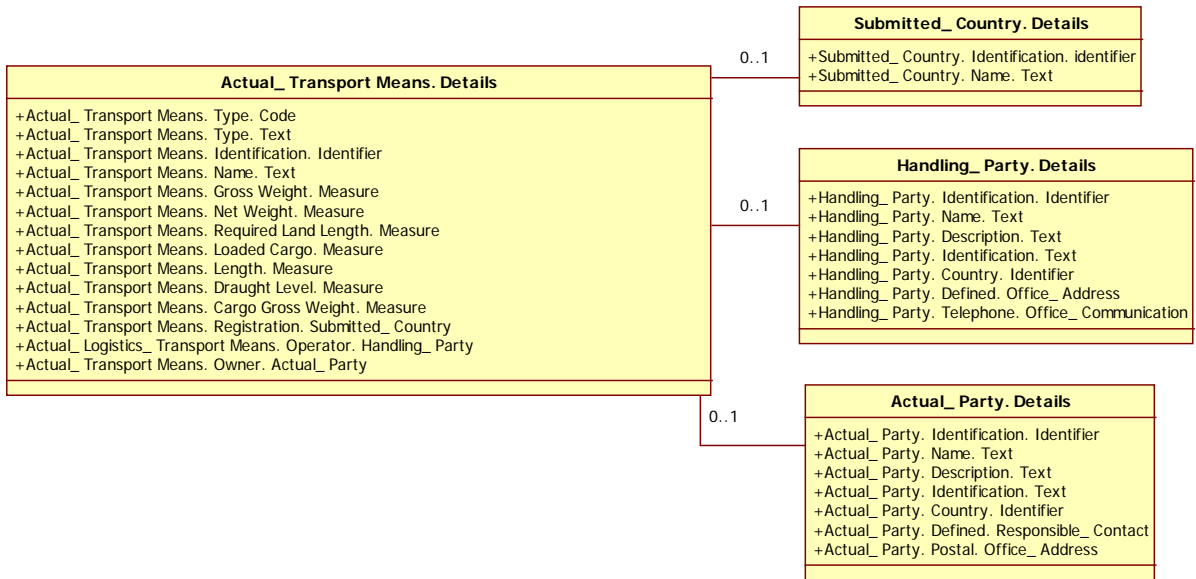


141

142



143
144



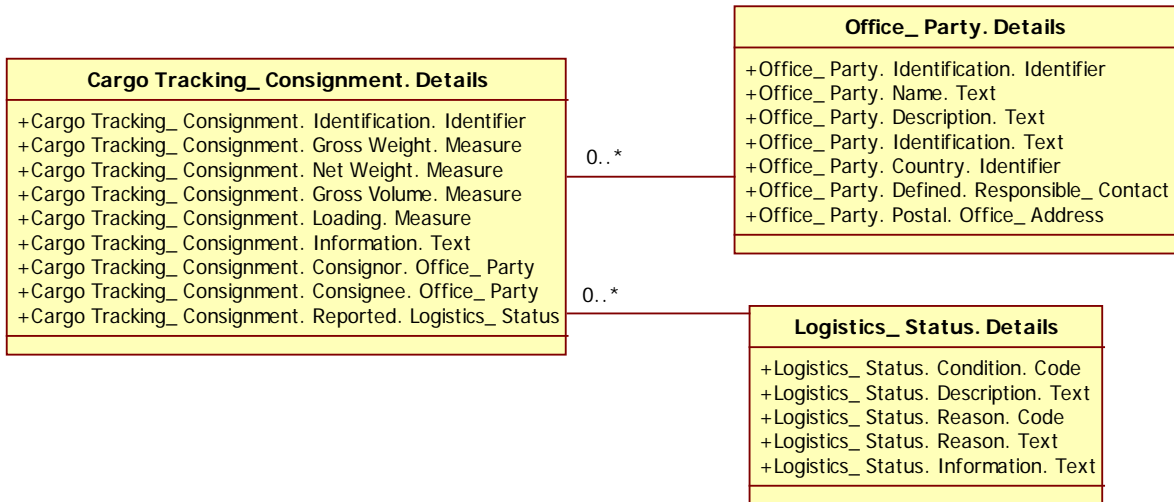
145
146
147

Occurrence	Element/Attribute	
	ABIE	Cargo Tracking_ Transport Movement. Details
0 .. 1	BBIE Definition:	Cargo Tracking_ Transport Movement. Stage. Code The code specifying the stage of this transport movement
1 .. 1	BBIE Definition:	Cargo Tracking_ Transport Movement. Mode. Code A code specifying a mode, such as by air, sea, rail, road or inland waterway, for this transport movement.
0 .. 1	BBIE Definition:	Cargo Tracking_ Transport Movement. Mode. Text A mode, expressed as text, of this transport movement, such as by air, sea, rail, road or inland waterway.
1 .. 1	BBIE Definition:	Cargo Tracking_ Transport Movement. Identification. Identifier A unique identifier for this transport movement, such as a voyage number, flight number, or trip number.
0 .. 1	BBIE Definition:	Cargo Tracking_ Transport Movement. Border Crossing. Date Time A date, time, date time or other date time value when this transport movement crosses a border.
0 .. 1	BBIE Definition:	Cargo Tracking_ Transport Movement. Sequence. Numeric A sequence number for this transport movement.
0 .. unbounded	ASBIE Definition:	Cargo Tracking_ Transport Movement. Responsible. Handling_ Person The person legally responsible for the operation of the means of transport used for this transport movement.
0 .. unbounded	ASBIE Definition:	Cargo Tracking_ Transport Movement. Loading. Actual_Event The loading event during which passengers or goods will be or have been loaded into or onto the means of transport used for this transport movement.
0 .. unbounded	ASBIE Definition:	Cargo Tracking_ Transport Movement. Unloading. Actual_Event The unloading event during which passengers or goods will be or have been unloaded from the means of transport used for this transport movement.
0 .. unbounded	ASBIE Definition:	Cargo Tracking_ Transport Movement. Arrival. Actual_Event An arrival event during this transport movement.
0 .. unbounded	ASBIE Definition:	Cargo Tracking_ Transport Movement. Departure. Actual_Event A departure event during this transport movement.
0 .. unbounded	ASBIE Definition:	Cargo Tracking_ Transport Movement. Intermediate. Actual_Event An intermediate event during this transport movement.
0 .. unbounded	ASBIE Definition:	Cargo Tracking_ Transport Movement. Used. Actual_Transport Means The means of transport used for this transport movement.
0 .. unbounded	ASBIE Definition:	Cargo Tracking_ Transport Movement. Itinerary. Actual_Route The route of this transport movement.
0 .. unbounded	ASBIE Definition:	Cargo Tracking_ Transport Movement. Related. Reference_Document A document related to this transport movement.
0 .. unbounded	ASBIE Definition:	Cargo Tracking_ Transport Movement. Carrier. Office_Party A carrier party for this transport movement.
0 .. unbounded	ASBIE Definition:	Cargo Tracking_ Transport Movement. Terminal Operator. Office_Party A terminal operator party for this transport movement..
0 .. unbounded	ASBIE Definition:	Cargo Tracking_ Transport Movement. Stevedore. Office_Party A stevedore party for this transport movement.

149

150 **3.2.3 Cargo Tracking_ Consignment**

151 A separately identifiable collection of goods items to be transported or available to be
 152 transported from one consignor to one consignee via one or more modes of transport where
 153 each consignment is the subject of one single transport contract.
 154



155

156

Occurrence	Element/Attribute
	ABIE Cargo Tracking_ Consignment. Details
1 .. 1	BBIE Cargo Tracking_ Consignment. Identification. Identifier Definition: A unique identifier for this consignment or part of this consignment.
0 .. 1	BBIE Cargo Tracking_ Consignment. Gross Weight. Measure Definition: A measure of the gross weight (mass) of this consignment which includes the weight of packaging but which excludes the weight of any transport equipment.
1 .. 1	BBIE Cargo Tracking_ Consignment. Net Weight. Measure Definition: The A measure of the net weight (mass) of this consignment which excludes the weight of packaging of this consignment and that of any transport equipment.
1 .. 1	BBIE Cargo Tracking_ Consignment. Gross Volume. Measure Definition: A measure of the gross volume, normally calculated by multiplying the maximum length, width and height of this consignment.
0 .. 1	BBIE Cargo Tracking_ Consignment. Loading Length. Measure Definition: A measure of the loading length which is the length along a means of transport over which the complete width and height is needed for loading all the goods items in this consignment..
0 .. 1	BBIE Cargo Tracking_ Consignment. Information. Text Definition: Information, expressed as text, for this consignment.
1 .. 1	ASBIE Cargo Tracking_ Consignment. Consignor. Office_ Party Definition: The consignor party for this consignment.
1 .. 1	ASBIE Cargo Tracking_ Consignment. Consignee. Office_ Party Definition: The consignee party for this consignment.
1 .. 1	ASBIE Cargo Tracking_ Consignment. Reported. Logistics_ Status Definition: A status reported for this consignment.

157

158 **4 Business Information Entity Reference**

159 **4.1 Aggregate Business Information Entities(ABIEs)**

ABIE Dictionary Entry Name	ACC Dictionary Entry Name	Included(BBIE)	Excluded (BBIE)	Note
Cargo Tracking_ Document. Details	Document. Details	Identification. Identifier Description. Text Issue. Date Time Submission. Date Time Error_ Status. Code		This information is defined that provides occurred tracking information during delivering consignments via any transport means to the wanted user.
Cargo Tracking_ Transport Movement. Details	Transport Movement. Details	Stage. Code Mode. Code Mode. Text Identification. Identifier Border Crossing. Date Time Sequence. Numeric		The conveyance (physical carriage) of people, goods, or other objects from place to place
Cargo Tracking_ Consignment. Details	Consignment. Details	Identification. Identifier Gross Weight. Measure Net Weight. Measure Gross Volume. Measure Loading Length. Measure Information. Text		A separately identifiable collection of goods items to be transported or available to be transported from one consignor to one consignee via one or more modes of transport where each consignment is the subject of one single transport contract.

160
161
162

4.2 Associated Business Information Entities(ASBIEs)

ABIE Dictionary Entry Name	Multiplicity restriction	Additional Comments
Actual_ Event. Occurrence. Transport_ Location	1..1	Location information where this event will occur or has occurred.
Actual_ Party. Defined. Responsible_ Contact	0..1	A defined contact for this party.
Actual_ Party. Postal. Office_ Address	0..1	A postal address for this party.
Actual_ Route. Scheduled. Delivery_ Period	0..1	A scheduled period for this route.
Actual_ Route. Original_ Start. Transport_ Location	0..1	An original start location for this route.
Actual_ Route. Start. Transport_ Location	0..1	A start location for this route.
Actual_ Route. End. Transport_ Location	0..1	An end location for this route.
Actual_ Route. Final Destination_ End. Transport_ Location	0..1	A final destination for this route.
Actual_ Transport Means. Registration. Submitted_ Country	0..1	The country of registration of this means of transport.
Actual_ Transport Means. Operator. Handling_ Party	0..1	The party operating this means of transport.
Actual_ Transport Means. Owner. Actual_ Party	0..1	The party owning this means of transport.
Cargo Tracking_ Consignment. Consignor. Office_ Party	0..*	The consignor party for this consignment.
Cargo Tracking_ Consignment. Consignee. Office_ Party	0..*	The consignee party for this consignment.
Cargo Tracking_ Consignment. Reported. Logistics_ Status	0..*	A status reported for this consignment.
Cargo Tracking_ Document. Issuer. Service_ Party	1..1	It means responsible person or party that is operating consignment tracking service.
Cargo Tracking_ Transport Movement. Responsible. Handling Person	0..*	The person legally responsible for the operation of the means of transport used for this transport.
Cargo Tracking_ Transport Movement. Loading. Actual_ Event	0..*	The loading event during which passengers or goods will be or have been loaded into or onto the means of transport used for this transport movement.
Cargo Tracking_ Transport Movement. Unloading. Actual_ Event	0..*	The unloading event during which passengers or goods will be or have been unloaded from the means of transport used for this transport movement.
Cargo Tracking_ Transport Movement. Arrival. Actual_ Event	0..*	An arrival event during this transport movement.
Cargo Tracking_ Transport Movement. Departure. Actual_ Event	0..*	A departure event during this transport movement.
Cargo Tracking_ Transport Movement. Intermediate. Actual_ Event	0..*	It means location information related to all of logistics bases during consignment delivering from consignor to consignee by some transport means.
Cargo Tracking_ Transport Movement. Used. Actual Transport Means	0..*	It specifies the used transport means for consignment delivery. It specifies the used transport means for consignment delivery.

Cargo Tracking_ Transport Movement. Itinerary. Actual Route	0..*	It specifies itinerary route information for delivered consignment from first departure to final destination through stopover or port of call, etc. by some transport means.
Cargo Tracking_ Transport Movement. Related. Actual_ Document	0..*	It specifies the status of delivered or stored consignment by some transport means. It specifies the purpose of transportation on delivering using some transport means by some parties.
Cargo Tracking_ Transport Movement. Carrier. Office_ Party	0..*	A carrier party for this transport movement.
Cargo Tracking_ Transport Movement. Terminal Operator. Office_ Party	0..*	A terminal operator party for this transport movement.
Cargo Tracking_ Transport Movement. Stevedore. Office_ Party	0..*	A stevedore party for this transport movement.
Handling_ Party. Defined. Responsible_ Contact	0..1	A defined contact for this party.
Handling_ Party. Postal. Office_ Address	0..1	A postal address for this party.
Handling_ Person. Residence. Office_ Address	0..1	A residence address for this person.
Handling_ Person. Telephone. Office_ Communication	0..1	Telephone communication information for this person.
Office_ Party. Defined. Responsible_ Contact	0..1	A defined contact for this party.
Office_ Party. Postal. Office_ Address	0..1	A postal address for this party.
Reference_ Document. Effective. Limited_ Period	0..1	The period within which this document is effective.
Reference_ Document. Issuer. Service_ Party	0..1	A party that issues this document.
Responsible_ Contact. Telephone. Office_ Communication	0..1	Telephone communication information for this contact.
Responsible_ Contact. Email. Office Email_ Communication	0..1	E-mail communication information for this contact.
Service_ Party. Defined. Responsible_ Contact	0..1	A defined contact for this party.
Service_ Party. Postal. Office_ Address	0..1	A postal address for this party.
Transport_ Location. Availability. Delivery_ Period	0..1	An availability period for a location.

165

166

170 **5 Associated Documentation**

171 **5.1 Core Components UN/CEFACT Registry version used**

172

173 The Core Components UN/CEFACT Registry version used for this document is version 1.0 and Core Components Library version 09B, together
174 with the TBG17 Core component library submission for the ABIEs, BBIEs and ASBIEs of the Cargo Tracking approved by TBG17.CORE

175

- 176 - COMPONENT UN/CEFACT REGISTRY VERSION USED
- 177 - UN/CEFACT CCL09B REFERENCE

178

179 **5.2 Draft Core Component Reference**

180

Comp. Cat	Dictionary Entry Name (English)	Definition	Object Class Term	Associated Object Class Term	Occ	
ACC	Consignment. Details	A separately identifiable collection of goods items to be transported or available to be transported from one consignor to one consignee via one or more modes of transport where each consignment is the subject of one single transport contract.	Consignment		Min	Max
BCC	Consignment. Identification. Identifier	A monetary value of the total charge or charges of freight, insurance and other services for this consignment calculated from the export exit location to the import entry location.	Consignment		0	unbounded
BCC	Consignment. Gross Weight. Measure	The number of packages within this consignment.	Consignment		0	unbounded

BCC	Consignment. Net Weight. Measure	The number of pieces of transport equipment, such as containers or similar unit load devices, in this consignment.	Consignment		0	unbounded
BCC	Consignment. Gross Volume. Measure	The quantity of separately chargeable transportation stages to be covered by this consignment.	Consignment		0	unbounded
BCC	Consignment. Loading Length. Measure	A measure of the loading length which is the length along a means of transport over which the complete width and height is needed for loading all the goods items in this consignment.	Consignment		0	unbounded
BCC	Consignment. Information. Text	Information, expressed as text, for this consignment.	Consignment		0	unbounded
ASCC	Consignment. Consignor. Party	The consignor party for this consignment.	Consignment	Party	0	1
ASCC	Consignment. Consignee. Party	The consignee party for this consignment.	Consignment	Party	0	1
ASCC	Consignment. Reported. Status	A status reported for this consignment.	Consignment	Status	0	unbounded
ACC	Contact. Details	A person or department that acts as a point of contact with another person or department.	Contact		Min	Max
ASCC	Contact. Telephone. Communication	Telephone communication information for this contact.	Communication		0	unbounded
ASCC	Contact. Email. Communication	Email communication information for this contact.	Communication		0	unbounded
ACC	Document. Details	A collection of data for a piece of written, printed or electronic matter that provides information or evidence.	Document		Min	Max
BCC	Document. Identification. Identifier	A unique identifier for this document.	Document		0	unbounded
BCC	Document. Description. Text	A unique identifier for this document.	Document		0	unbounded
BCC	Document. Issue. Date Time	The date, time, date time or other date time value for the issuance of this document.	Document		0	unbounded

BCC	Document. Submission. Date Time	The date, time, date time or other date time value for the formal submission of this document to a receiver by a sender.	Document		0	1
BCC	Document. Status. Code	A code specifying a status of a document.	Document		0	unbounded
ASCC	Document. Effective. Period	The period within which this document is effective.	Document	Period	0	1
ASCC	Document. Issuer. Party	A party that issues this document.	Document	Party	0	unbounded
ACC	Event. Details	The conveyance (physical carriage) of people, goods, or other objects from place to place.	Event		Min	Max
ASCC	Event. Occurrence. Location	Location information where this event will occur or has occurred.	Event	Location	0	unbounded
ACC	Location. Details	A physical location or place.	Location		Min	Max
ASCC	Location. Availability. Period	An availability period for a location.	Location	Period	0	unbounded
ACC	Party. Details	An individual, a group, or a body having a role in a business function. Party has a legal connotation in a business transaction.	Document		Min	Max
ASCC	Party. Defined. Contact	A defined contact for this party.	Party	Contact	0	unbounded
ASCC	Party. Postal. Address	A postal address for this party.	Party	Address	0	unbounded
ACC	Person. Details	An individual human being.	Person		Min	Max
ASCC	Person. Residence. Address	A residence address for this person.	Person	Address	0	unbounded
ASCC	Person. Telephone. Communication	Telephone communication information for this person.	Person	Communicate	0	unbounded
ACC	Route. Details	The conveyance (physical carriage) of people, goods, or other objects from place to place.	Route		Min	Max
ASCC	Route. Scheduled. Period	A scheduled period for this route.	Route	Period	0	unbounded
ASCC	Route. Start. First Original_ Location	A start location for this route.	Route	Location	0	1

ASCC	Route. End. Final Destination_ Location	An end location for this route.	Route	Location	0	1
ACC	Transport Means. Details	The device or method used to convey people, goods, or other objects from place to place.	Transport Means		Min	Max
ASCC	Transport Means. Registration. Country	The country of registration of this means of transport.	Transport Means	Country	0	1
ASCC	Transport Means. Operator. Party	The party operating this means of transport.	Transport Means	Party	0	1
ASCC	Transport Means. Owner. Party	The party owning this means of transport.	Transport Means	Party	0	1
ACC	Transport Movement. Details	The conveyance (physical carriage) of people, goods, or other objects from place to place.	Transport Movement		Min	Max
BCC	Transport Movement. Stage. Code	The code specifying the stage of this transport movement.	Transport Movement		0	1
BCC	Transport Movement. Mode. Code	A code specifying a mode, such as by air, sea, rail, road or inland waterway, for this transport movement.	Transport Movement		0	unbounded
BCC	Transport Movement. Mode. Text	A mode, expressed as text, of this transport movement, such as by air, sea, rail, road or inland waterway.	Transport Movement		0	unbounded
BCC	Transport Movement. Identification. Identifier	A unique identifier for this transport movement, such as a voyage number, flight number, or trip number.	Transport Movement		0	unbounded
BCC	Transport Movement. Border Crossing. Date Time	A date, time, date time or other date time value when this transport movement crosses a border.	Transport Movement		0	unbounded
BCC	Transport Movement. Sequence. Numeric	A sequence number for this transport movement.	Transport Movement		0	unbounded
ASCC	Transport Movement. Departure. Event	A departure event during this transport movement.	Transport Movement	Event	0	unbounded
ASCC	Transport Movement. Arrival. Event	An arrival event during this transport movement.	Transport Movement	Event	0	unbounded
ASCC	Transport Movement. Loading. Event	The loading event during which passengers or goods will be or have been loaded into or onto the means of transport used for this transport movement.	Transport Movement	Event	0	1
ASCC	Transport Movement. Unloading. Event	The unloading event during which passengers or goods will be or have been unloaded from the means of transport used for this transport movement.	Transport Movement	Event	0	1
ASCC	Transport Movement. Itinerary. Route	The route of this transport movement.	Transport Movement	Route	0	1

ASCC	Transport Movement. Intermediate. Event	An intermediate event during this transport movement.	Transport Movement	Event	0	unbounded
ASCC	Transport Movement. Related. Document	A document related to this transport movement.	Transport Movement	Document	0	unbounded
ASCC	Transport Movement. Used. Transport Means	The means of transport used for this transport movement.	Transport Movement	Transport Means	0	1
ASCC	Transport Movement. Responsible. Person	The person legally responsible for the operation of the means of transport used for this transport movement.	Transport Movement	Person	0	1
ASCC	Transport Movement. Carrier. Party	A carrier party for this transport movement.	Transport Movement	Party	0	unbounded
ASCC	Transport Movement. Terminal Operator. Party	A terminal operator party for this transport movement.	Transport Movement	Party	0	unbounded
ASCC	Transport Movement. Stevedore. Party	A stevedore party for this transport movement.	Transport Movement	Party	0	unbounded

181 **6 Additional Information**

182 **6.1 Definition of Terms**

Information Entity	Definition	Based or referred
Consignor	A person who sends cargos overseas through a contract with transporters such as shipping companies, forwarders, etc.	
Consignee	A person who brings overseas cargos to a country through a contract with transporters such as shipping companies, forwarders, etc.	
Exporter	A person, company who make a delivery goods to another country for consignor.(Consignor’s managing agent)	
Importer	A person, company who make delivery goods from other countries to domestic consignee. (Consignee’s managing agent)	
Carrier	A company that regularly runs ships or Air Planes between ports and provides shipping services for cargo transport in return for fees	
Shipping Agent	A company that has delegated authority to conduct part or whole of particular business of shipping companies.	
Transporter	A company responsible for transporting people, goods or cargos.	
Terminal	Unlike regular warehouses that keep cargos in a relatively long term, Sheds are the places for temporary keeping of cargos and include terminal, ICD, CY, bonded warehouses.	
Forwarder	A person (company) who handles transport of goods for consignors. Theoretically, forwarders handle transport between transporters and consignors; however, they make transport contract with transporters as agents of consignors.	
Loading/Unloading Company	A company that conducts loading or unloading of cargos on behalf of importers, exporters and shipping companies.	
Inspection Agent	A company that conducts counting and status checking against cargos when cargos are loaded to or unloaded from ships.	
Cargo Tracking	It is the process of tracing the location of cargos in real time when cargos such as goods or products are transported.	
Inspection & Quarantine Agency	An agency or organization responsible for inspecting transported cargos for the purpose of preventing infectious diseases or gems to get into a country through ships or airplanes.	
Logistics Point	A particular space established as a basic facility for transport. Logistics can be classified into transport route, end point and point; logistics points are points and include terminal, ICD and bonded warehouse.	

183

184 **6.2 Appendices**

185 -Cargo Tracking XML Schema (ZIP)