



**Economic and
Social
Council**

Distr.
GENERAL

ECE/TRADE/WP.7/GE.6/2006/5
1 February 2006

ENGLISH ONLY

ECONOMIC COMMISSION FOR EUROPE

COMMITTEE ON TRADE

Working Party on Agricultural Quality Standards

Specialized Section on Standardization of Seed Potatoes
(Thirty-sixth session, 20 - 22 March 2006)
Item 4 (b) of the Provisional Agenda

FURTHER DEVELOPMENT OF ANNEX VIII:*

Images for common scab/netted scab

Submitted by Germany

This document proposes new images for common scab to replace the existing ones (TRADE/WP.7/2005/4).

The document is presented for discussion and reproduced in the form in which it was received by the secretariat.

* The present document has been submitted after the official documentation deadline by the Trade and Timber Division due to resource constraints.

Comparison of Common scab and Netted scab of potatoes

Dr. Günther Erbe
based on paper of
NIEPOLD, F.
Biologische Bundesanstalt Braunschweig

held on / . Nov. in Göttingen

Germany, Certification
agency Rostock

UNECE Common and Netted
scab

Visual inspection of Common scab in Bundessortenamt Hannover

0% 15% 30% 45% 65 -100%

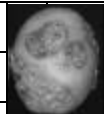

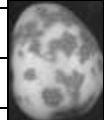
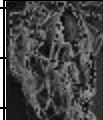


Germany, Certification
agency Rostock

UNECE Common and Netted
scab

3 groups of pathogens

/PASCO; 2004/

Common scab		Netted scab	
<i>Streptomyces scabies</i>		<i>Streptomyces reticuliscabiei</i>	
<i>Streptomyces stelliscabiei</i>		?	
?		?	
			
?		?	
<i>Streptomyces europaeiscabiei</i>			

Germany, Certification
agency Rostock

UNECE Common and Netted
scab

Differences between „pathogens“

/PASCO; 2004/

	Common scab	Netted scab
Occurrence	soil-borne	soil-borne
Soil temperature	° C	° C
Soil moisture	slow	high

Germany, Certification
agency Rostock

UNECE Common and Netted
scab

Susceptibility of varieties

Results of ADRIVON group:

- **Bintje** and **Desiree** are high susceptible to Common and Netted scab.
- Only few varieties are susceptible to Netted scab

Germany, Certification
agency Rostock

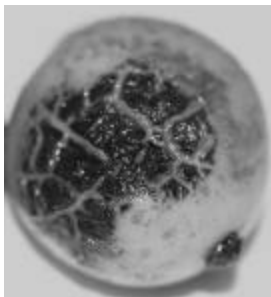
UNECE Common and Netted
scab

Mistakes during visual inspection



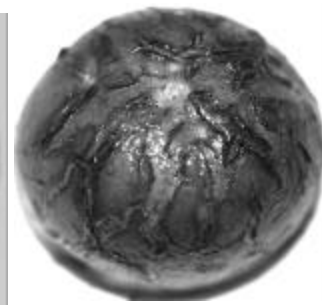
Netted scab

Germany, Certification
agency Rostock



Rhizoctonia solani

UNECE Common and Netted
scab



skin cracks

Conclusions.

- In France increasing of Netted scab in soil
- In Germany spreading of Netted scab will be expected
- Resistance of varieties
- Attention during visual inspection /mistakes/
- Agricultural measures are necessary because it's impossible to predict by chemical treatments

Germany, Certification
agency Rostock

UNECE Common and Netted
scab

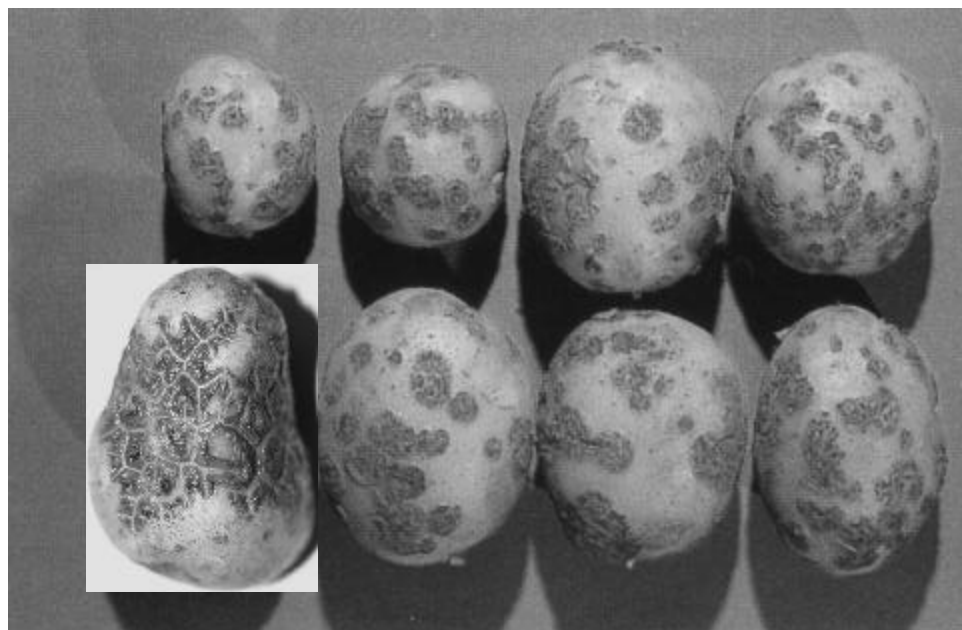
Literature

- **Bonchek-Mechiche K., Pasco, C. Andrivon, D. and Jouan B., 2000:** Differences in host range pathogenicity to potato cultivars and response to soil temperature among *Streptomyces* species causing common and netted scab in France. *Plant Pathology* **49**, 3-10.
- **Pasco, C.:** Biological trapping: A characterisation tool for *Streptomyces* species pathogenic on potatoes. EAPR Meeting Abstrakt, Lille, Frankreich, 12. -15. Juli 2004.
- **Niepold, F.:** Comparison of common and netted scab. paper / . Nov. in Göttingen

Germany, Certification
agency Rostock

UNECE Common and Netted
scab

Netted and Common scab



Germany, Certification
agency Rostock

UNECE Common and Netted
scab