

# MALTA



<http://www.nso.gov.mt/>

Capital:	Valletta
Population mid-year:	398 000
Area (km <sup>2</sup> ):	316
Population density (per km <sup>2</sup> ):	1 259
Population in urban areas:	92%
Population as % of total population of UNECE:	0.03
Official languages:	Maltese and English
Date joined UN:	1 December 1964
National currency:	Maltese lira

Life expectancy at birth (in years):	
Women:	81.0
Men:	76.5

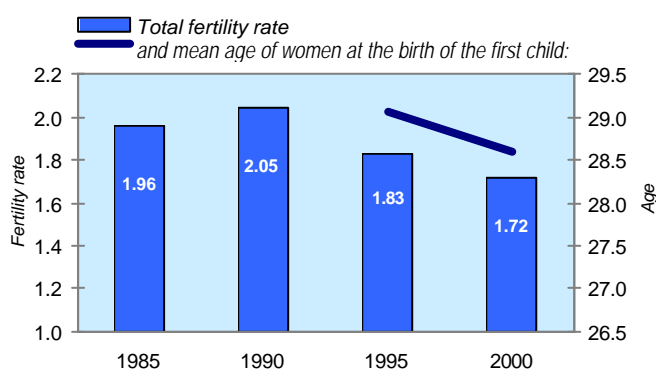
Healthy life expectancy (in years), 2002:	
Women:	72.3
Men:	69.7

Infant mortality rate (% live births):	5.9
----------------------------------------	-----

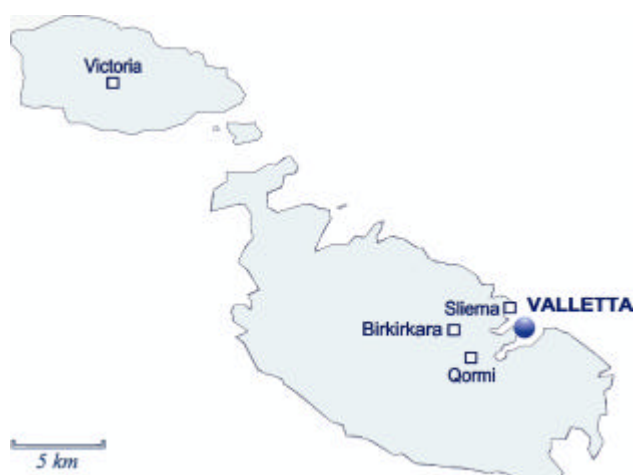
Average annual population growth rate, 2000-2005:	0.42
---------------------------------------------------	------

Marriages (per 1000 population):	5.9
Divorces (per 1000 population), 1998:	2.6
Average household size, 1990:	3.2

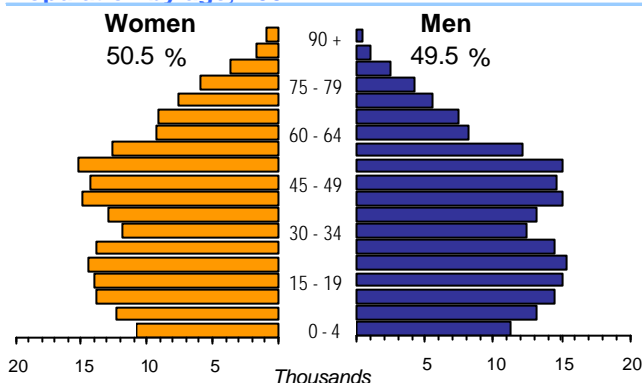
## Total fertility rate and mean age of women at the birth of the first child:



Time: GMT +1h

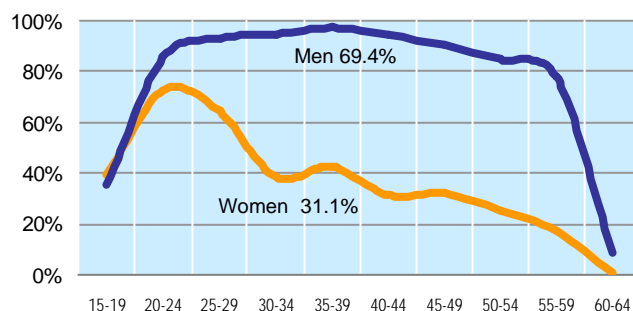


## Population by age, 2002:



Percentage of women in the labour force:	31
Percentage of female students, 2002:	57
Percentage of parliament seats held by women:	9

## Economic activity rate, 2002:



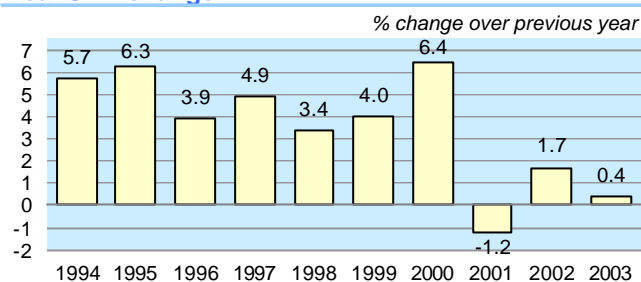
	1997	1998	1999	2000	2001	2002	2003
Employment (% change over previous year)	...	0.8	2.3	8.1	2.1	-0.7	-1.4
Unemployment rate (%)	3.4	4.1	4.7	7.0	6.7	7.5	8.2
Youth unemployment rate (%)	6.7	7.7	9.2	14.2	16.1	17.7	19.8
Total expenditure on education (% GDP) <sup>a/</sup>	5.9	5.7	4.8	4.6	4.6	...	...
Total expenditure on health (% GDP) <sup>b/</sup>	8.6	8.4	8.3	8.8	8.9	9.7	...

a/ Total public expenditure on education as % of GDP, for all levels of education combined, Eurostat (New Cronos).

b/ Total health expenditure as % of gross domestic product, WHO Regional Office for Europe.

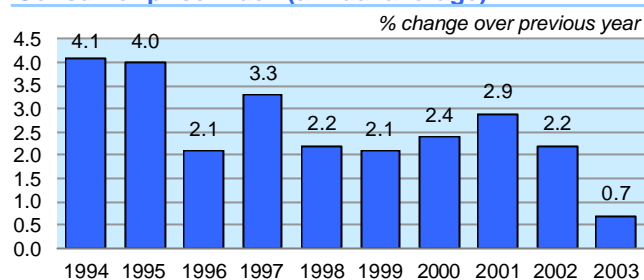


## Real GDP change



GDP per capita, PPP USD:	12 292
Lira:	4 671
Gross capital formation per capita USD:	2 854
Private consumption expenditure	
per capita USD, 2002:	6 300

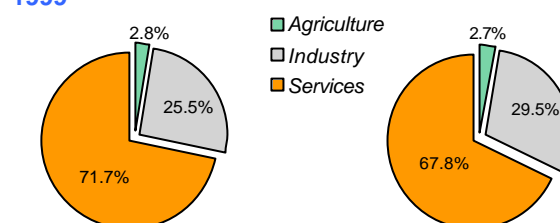
## Consumer price index (annual average)



GDP at current prices bill. PPP USD:	4.2
bill. Maltese liri:	1.6
GDP as % of total GDP of UNECE:	0.01
Purchasing Power Parities (PPP):	0.38
Exchange rate (Lira per USD annual average):	0.38

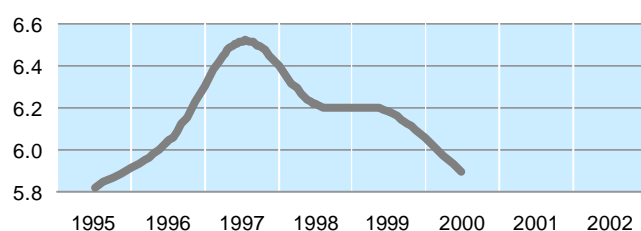
## GDP (value added) by major economic sectors:

## Employment by major economic sectors



Number of passenger cars (per 1000 pop.), 2002:	493
Estimated Internet users (per 1000 pop.):	303
Mobile phone subscribers (per 1000 pop.):	725

## CO<sub>2</sub> emissions per capita (in Gigagrams):

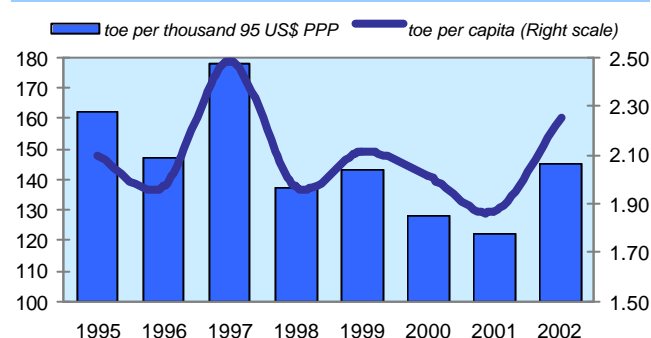


Exports of goods and services, as % of GDP:	..
Imports of goods and services, as % of GDP:	84.8
External trade balance, as % of GDP:	-5.2
Tourism receipts, as % of GDP, 2002:	13.9
Tourism expenditures, as % of GDP, 2002:	3.7

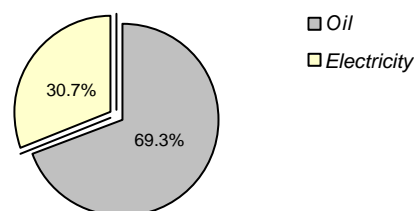
## Main external trade commodities (% of total), 2001:

Exports of goods (f.o.b.):	
Electrical machinery, apparatus and appliances	56.7
Misc manufactured goods nes	7.5
Clothing and accessories	7.3
Petroleum, petrol. product	5.5
Rubber manufactures, nes	2.3

## Energy use:<sup>d/</sup>



## Final consumption of energy, 2002:



## Imports of goods (c.i.f.):

Electrical machinery, apparatus and appliances	32.4
Petroleum, petroleum products and related mat.	8.1
Road vehicles	4.8
Miscellaneous manufactured articles, n.e.s.	4.6
Textile varn, fabrics, made-up articles, n.e.s.	3.5

c/ % share of GDP at producer prices, shares in value added at current prices.  
d/ Total primary energy supply in Mtoe expressed in million US\$.