

LITHUANIA



<http://www.std.lt/web/main.php/>

Capital:	Vilnius
Population mid-year:	3 454 100
Area (km ²):	65 300
Population density (per km ²):	53
Population in urban areas:	67%
Population as % of total population of UNECE:	0.29
Official languages:	Lithuanian
Date joined UN:	17 September 1991
National currency:	Litas (LTL)

Life expectancy at birth (in years):	
Women:	77.5
Men:	66.3

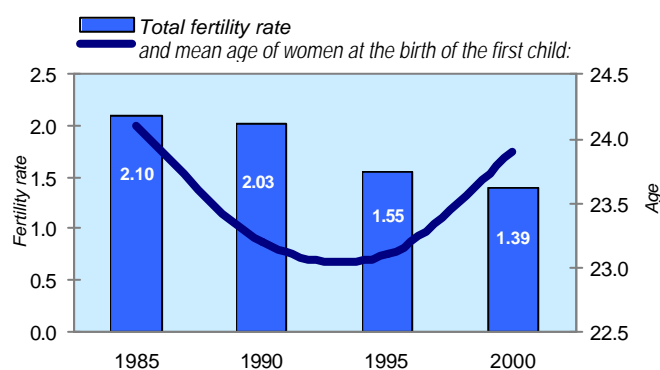
Healthy life expectancy (in years), 2002:	
Women:	67.7
Men:	58.9

Infant mortality rate (‰ live births):	6.7
--	-----

Average annual population growth rate, 2000-2005:	-0.9
---	------

Marriages (per 1000 population):	4.9
Divorces (per 1000 population): ^{a/}	3.1
Average household size, 2001:	2.6

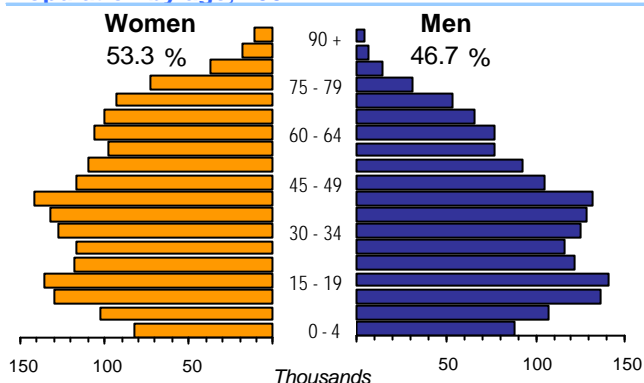
Total fertility rate and mean age of women at the birth of the first child:



Time: GMT +2h

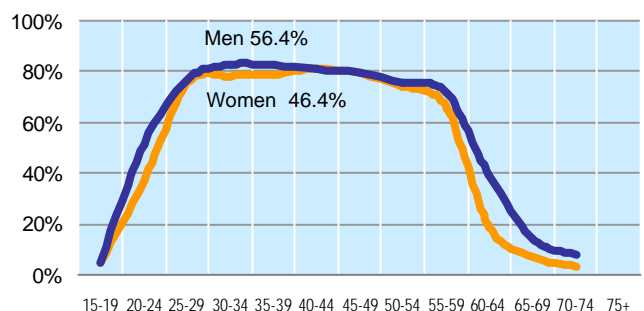


Population by age, 2002:



Percentage of women in the labour force:	50
Percentage of female students, 2002:	61
Percentage of parliament seats held by women:	11

Economic activity rate, 2003:



	1997	1998	1999	2000	2001	2002	2003
Employment (% change over previous year)	0.6	-0.8	-0.5	-3.7	-4.0	-7.3	2.3
Unemployment rate (%)	11.2	11.8	11.2	15.7	16.1	13.6	12.7
Youth unemployment rate (%) ^{b/}	25.2	23.6	23.0	29.3	30.2	23.9	27.2
Total expenditure on education (% GDP) ^{c/}	5.3	6.1	6.9	6.3	6.2	6.0	5.6
Total expenditure on health (% GDP) ^{d/}	3.8	3.9	4.0	3.6	3.4	3.1	3.0

a/ Eurostat (New Cronos), provisional value.

b/ UNICEF Innocenti Research Centre (IRC) TransMONEE 2003, Unemployment rate among 15-24 year-olds based on LFS concept.

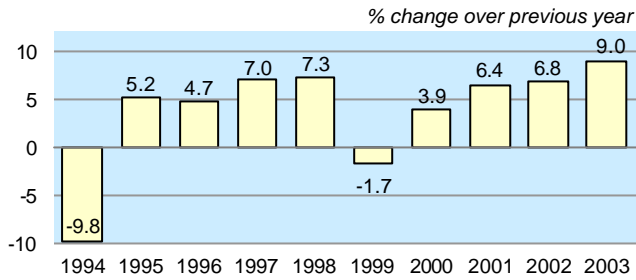
c/ Gross VA in education (ISIC M); share of total GVA, current prices.

d/ Gross VA in health & social work (ISIC N); share of total GVA, current prices.



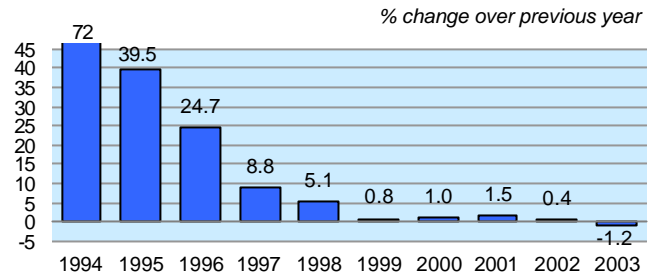
LITHUANIA

Real GDP change



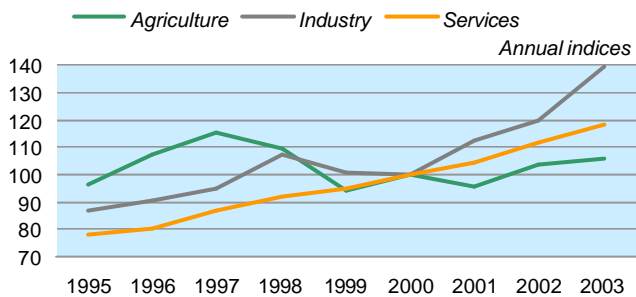
GDP per capita, PPP USD:	10 421
LTL:	16 257
Gross capital formation per capita USD, :	2 266
Private consumption expenditure	
per capita USD:	6 693

Consumer price index (annual average)



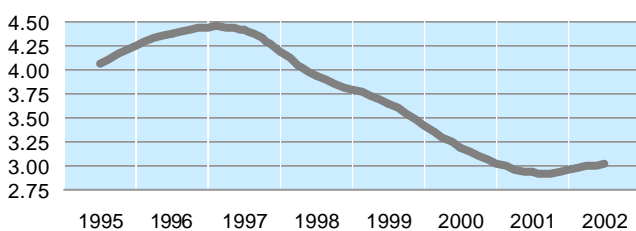
GDP at current prices bill. PPP USD:	33.6
bill. litas:	52.5
GDP as % of total GDP of UNECE:	0.12
Purchasing Power Parities (PPP):	1.56
Exchange rate (LTL per USD annual average):	3.06

GDP (value added) in agriculture, industry and services (2000=100):



Number of passenger cars (per 1000 pop.), 2002:	340
Estimated Internet users (per 1000 pop.):	214
Mobile phone subscribers (per 1000 pop.):	666

CO₂ emissions per capita (in Gigaarams):^{f/}



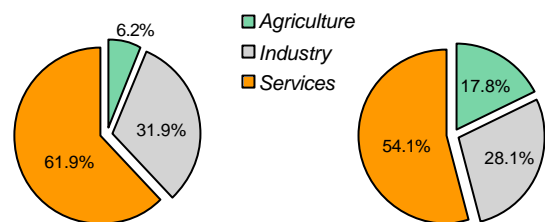
Exports of goods and services, as % of GDP:	51.4
Imports of goods and services, as % of GDP:	56.8
External trade balance, as % of GDP:	-5.5
Tourism receipts, as % of GDP, 2002:	1.7
Tourism expenditures, as % of GDP, 2002:	1.1

Main external trade commodities (% of total):

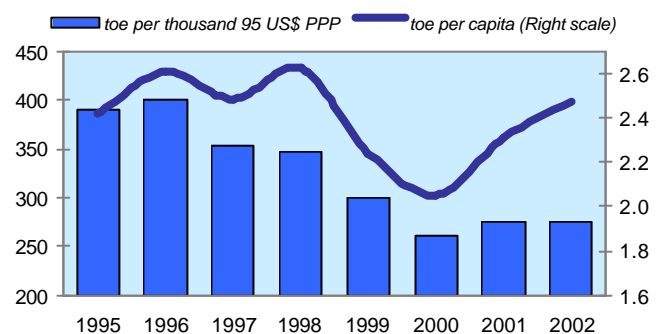
Exports of goods (f.o.b.):	
Petroleum, petrol. product	17.0
Clothing and accessories	9.2
Other transport equipment	8.6
Electrical machinery, apparatus and appliances	6.7
Road vehicles	6.6

e/ Total primary energy supply in Mtoe expressed in million US\$.
f/ Fuel Combustion (Sectoral Approach).

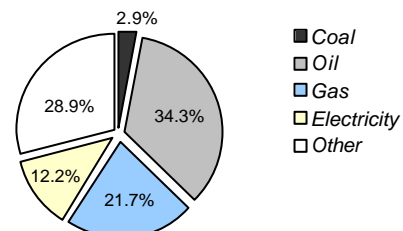
GDP (value added) by major economic sectors: Employment by major economic sectors



Energy use:^{e/}



Final consumption of energy, 2002:



Imports of goods (c.i.f.):

Petroleum, petroleum products and related mat.	14.1
Road vehicles	9.6
Other transport equipment	5.7
Textile yarn, fabrics, made-up articles, n.e.s.,	5.3
Electrical machinery, apparatus and appliances	5.2

