

BOSNIA AND HERZEGOVINA



<http://www.fzs.ba/>

Capital:	Sarajevo
Population mid-year:	4 330 530
Area (km ²):	51 197
Population density (per km ²):	85
Population in urban areas:	44%
Population as % of total population of UNECE:	0.36
Official languages:	Bosnian, Serbian, Croatian
Date joined UN:	22 May 1992
National currency:	Convertible mark

Life expectancy at birth (in years):	
Women:	76.7
Men:	71.3

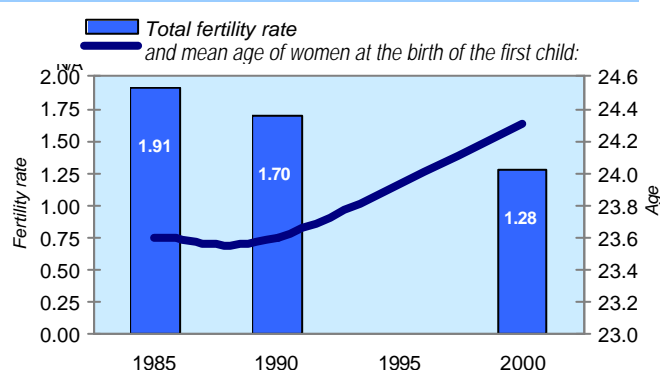
Healthy life expectancy (in years), 2002:	
Women:	66.4
Men:	62.3

Infant mortality rate (% live births):	21.9
--	------

Average annual population growth rate, 2000-2005:	1.13
---	------

Marriages (per 1000 population): ^{a/}	5.3
Divorces (per 1000 population): ^{a/}	0.4
Average household size, 1991:	3.6

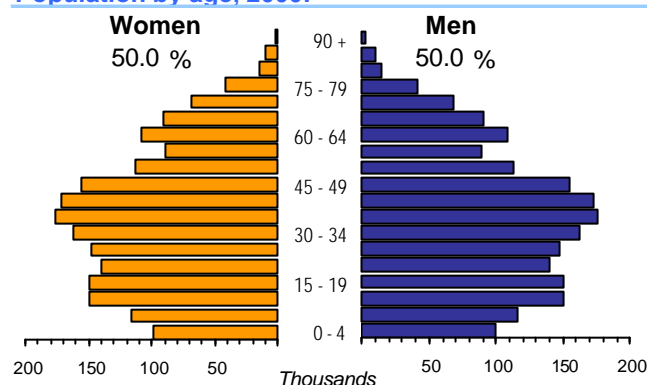
Total fertility rate and mean age of women at the birth of the first child:



Time: GMT +1h

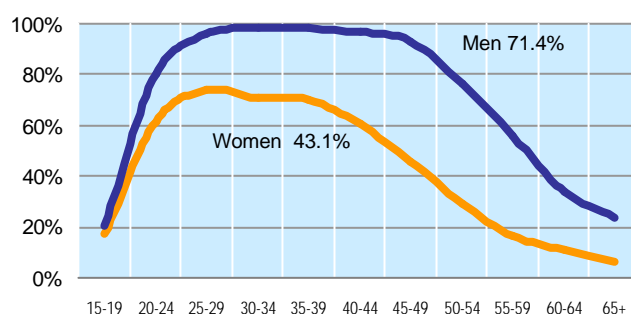


Population by age, 2000:



Percentage of women in the labour force, 2000:	38
Percentage of female students, 1996:	64
Percentage of parliament seats held by women:	17

Economic activity rate, 2000:^{b/}



	1997	1998	1999	2000	2001	2002	2003
Employment (% change over previous year)	52.7	5.9	3.1	0.8	-0.9
Unemployment rate (%)	39.0	38.7	39.0	39.4	39.9	42.7	44.1
Youth unemployment rate (%)
Total expenditure on education (% GDP) ^{c/}	6.0	6.3	5.9	5.8	5.7
Total expenditure on health (% GDP)	6.7	7.9	5.3	5.7	5.4	5.4	5.6

a/ Eurostat New Cronos estimated data.

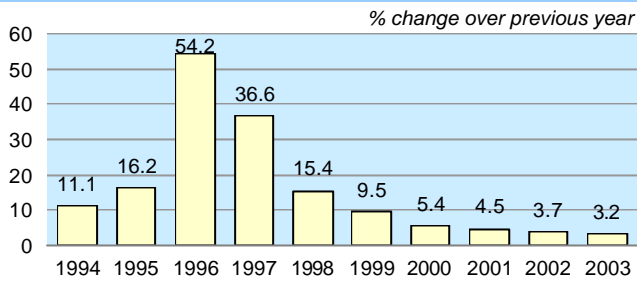
b/ Official estimates, 16+, Economically active population: men aged 16 to 62 years; women aged 16 to 57 years.

c/ Gross VA in education (ISIC M); share of total GVA, current prices.



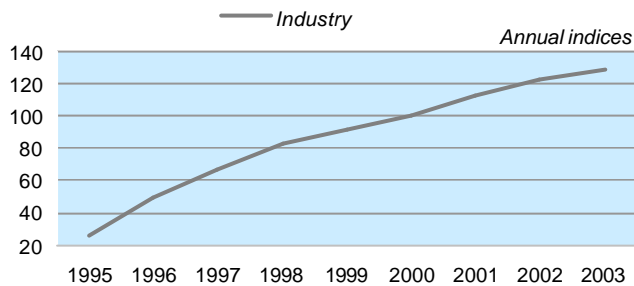
BOSNIA AND HERZEGOVINA

Real GDP change



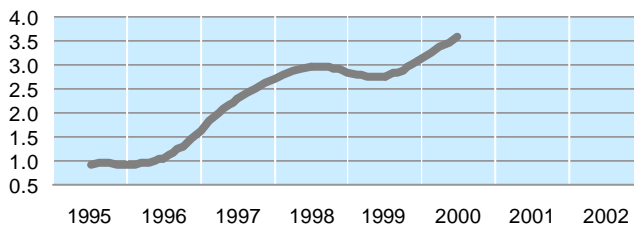
GDP per capita, PPP USD:	3 114
conv.marks:	2 771
Gross capital formation per capita USD, 2002:	612
Private consumption expenditure	
per capita USD:	2 056

GDP (value added) in agriculture, industry and services (2000=100):



Estimated Internet users (per 1000 pop.):	26
Mobile phone subscribers (per 1000 pop.):	274

CO₂ emissions per capita (in Gigagrams):



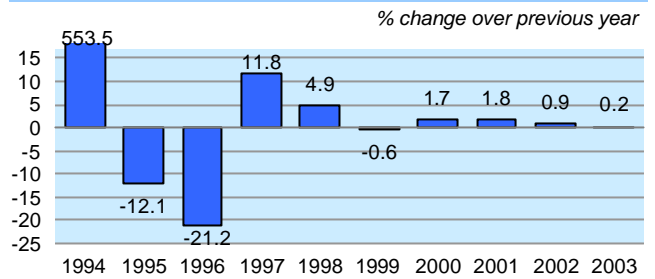
Exports of goods and services, as % of GDP, 2002:	26.2
Imports of goods and services, as % of GDP, 2002:	59.2
External trade balance, as % of GDP:	...
Tourism receipts, as % of GDP, 2002:	0.8
Tourism expenditures, as % of GDP, 2002:	0.4

Main external trade commodities (% of total):

Exports of goods (f.o.b.):	
Non-ferrous metals	16.3
Cork and wood	10.7
Furniture, bedding, etc..	8.5
Power generating machines	6.5
Clothing and accessories	6.3

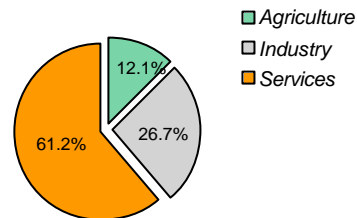
d/ Definition of: Gross output, industry, including energy (ISIC C-E) Industrial production refers to goods produced by establishments engaged in mining (including oil extraction), manufacturing, and production of electricity, gas and water.
e/ Total primary energy supply in Mtoe expressed in million US\$.

Consumer price index (annual average)

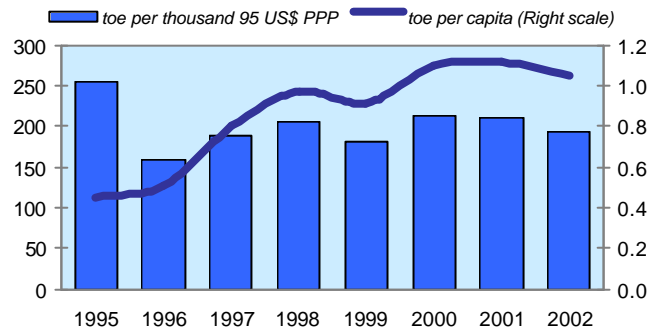


GDP at current prices bill, PPP USD:	14.4
bill. convertible marks:	12.8
GDP as % of total GDP of UNECE:	0.05
Purchasing Power Parities (PPP):	0.89
Exchange rate (conv.marks per USD annual average):	1.73

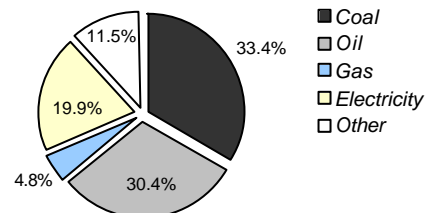
GDP (value added) by major economic sectors:^d 2002



Energy use:^{e/}



Final consumption of energy, 2002:



Imports of goods (c.i.f.):

Road vehicles	6.9
Petroleum, petroleum products and related mat.	6.4
Electrical machinery, apparatus and appliances	4.8
Non-metallic mineral manufactures, n.e.s.	4.8
General industrial machinery and equipment	4.1

