

AZERBAIJAN



<http://www.azstat.org/>

Capital:	Baku
Population mid-year:	8 234 100
Area (km ²):	86 600
Population density (per km ²):	95
Population in urban areas:	50%
Population as % of total population of UNECE:	0.68
Official languages:	Azeri
Date joined UN:	2 March 1992
National currency:	Manat (AZM)

Life expectancy at birth (in years):	
Women:	67.6
Men:	59.1

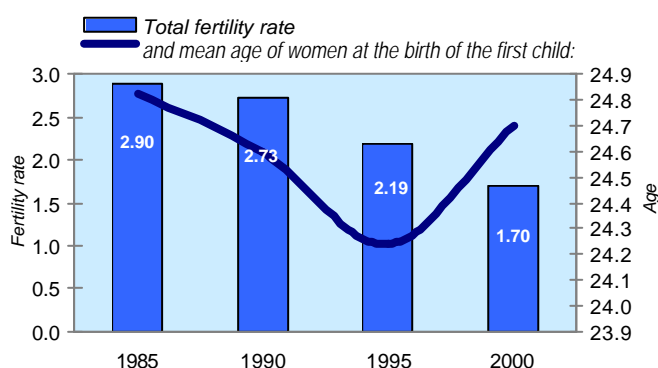
Healthy life expectancy (in years), 2002:	
Women:	58.7
Men:	55.8

Infant mortality rate (% live births):	82.1
--	------

Average annual population growth rate, 2000-2005:	0.89
---	------

Marriages (per 1000 population), 2001:	5.2
Divorces (per 1000 population), 2001:	0.7
Average household size, 1999:	4.7

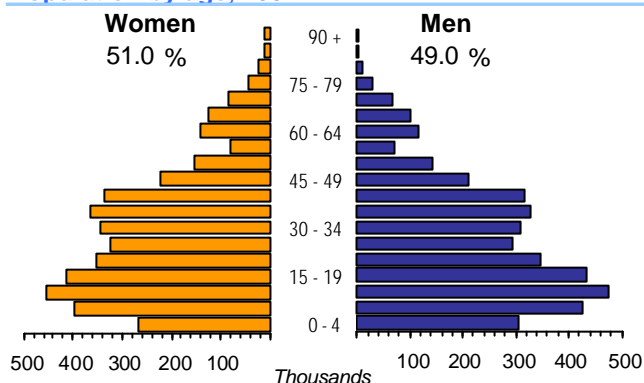
Total fertility rate and mean age of women at the birth of the first child:



Time: GMT +4h

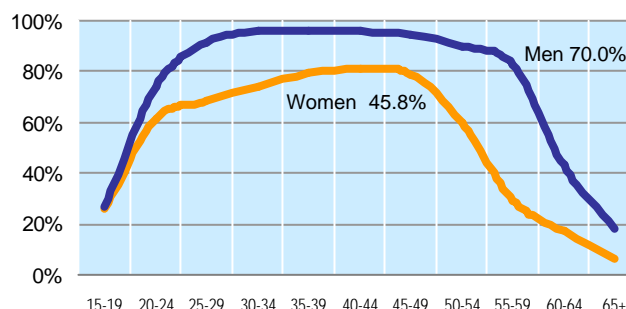


Population by age, 2002:



Percentage of women in the labour force:	48
Percentage of female students, 1998:	45
Percentage of parliament seats held by women:	11

Economic activity rate, 2000:^{a/}



	1997	1998	1999	2000	2001	2002	2003
Employment (% change over previous year)	0.2	0.2	0.0	0.0	0.3	0.3	...
Unemployment rate (%) ^{b/}	1.3	1.4	1.2	1.2	1.3	1.3	1.4
Youth unemployment rate (%)	1.3	1.4	1.2	1.2	1.3	1.3	...
Total expenditure on education (% GDP) ^{c/}	3.7	7.2	6.2	5.2	4.9	4.6	3.9
Total expenditure on health (% GDP) ^{d/}	1.3	2.1	2.3	1.9	1.8	1.5	1.3

a/ Official estimates, 16+, Economically active population: men aged 16 to 62 years; women aged 16 to 57 years.

b/ The Statistical Yearbook of the Economic Commission for Europe 2003, Registered unemployment.

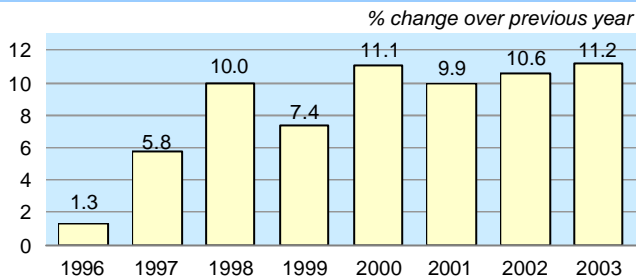
c/ Gross VA in education (ISIC M); share of total GVA, current prices.

d/ Gross VA in health & social work (ISIC N); share of total GVA, current prices.



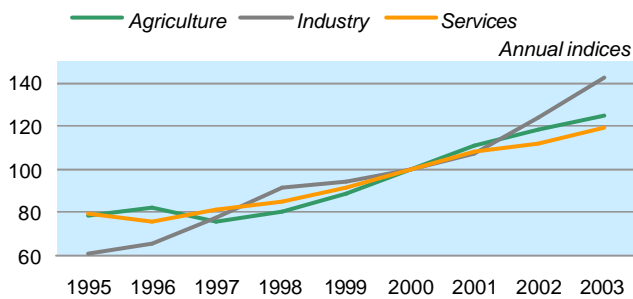
AZERBAIJAN

Real GDP change



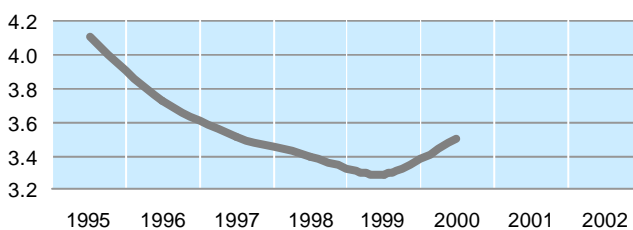
GDP per capita, PPP USD:	3 727
AZM:	4 257 576
Gross capital formation per capita USD. :	1 908
Private consumption expenditure	
per capita USD:	2 256

GDP (value added) in agriculture, industry and services (2000=100):



Number of passenger cars (per 1000 pop.), 2002:	43
Estimated Internet users (per 1000 pop.):	37
Mobile phone subscribers (per 1000 pop.):	107

CO₂ emissions per capita (in Gigagrams):



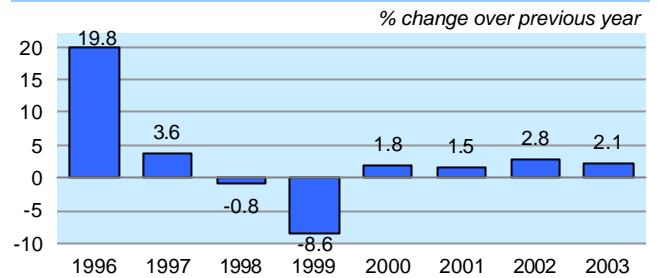
Exports of goods and services, as % of GDP:	40.1
Imports of goods and services, as % of GDP:	61.7
External trade balance, as % of GDP:	-21.5
Tourism receipts, as % of GDP, 2002:	0.2
Tourism expenditures, as % of GDP, 2002:	0.4

Main external trade commodities (% of total):

Exports of goods (f.o.b.):	
Petroleum, petrol. product	85.5
Vegetables and fruit	2.4
Textile fibres	1.3
Metalliferous ore	1.3
Plastics in primary form	1.2

e/ Total primary energy supply in Mtoe expressed in million USD.

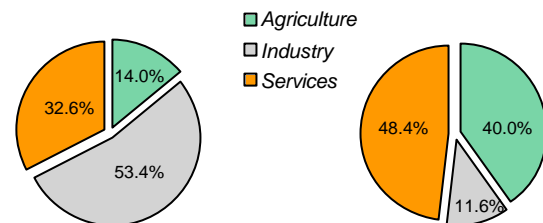
Consumer price index (annual average)



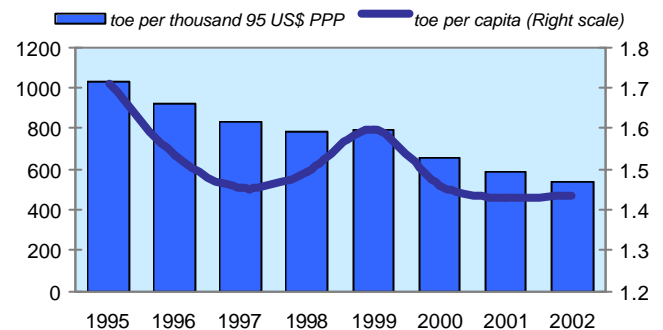
GDP at current prices bill. PPP USD:	31.9
bill. manat:	36 397
GDP as % of total GDP of UNECE:	0.11
Purchasing Power Parities (PPP):	1 142
Exchange rate (AZM per USD annual average):	4 911

GDP (value added) by major economic sectors:

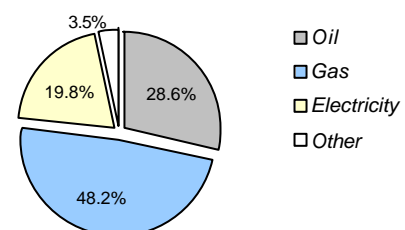
Employment by major economic sectors



Energy use:^{e/}



Final consumption of energy, 2002:



Imports of goods (c.i.f.):

Iron and steel	14.1
Other transport equipment	8.3
Gas, natural, manufactured	8.2
General industrial machinery and equipment	7.9
Machinery specialized for particular industries	7.0

