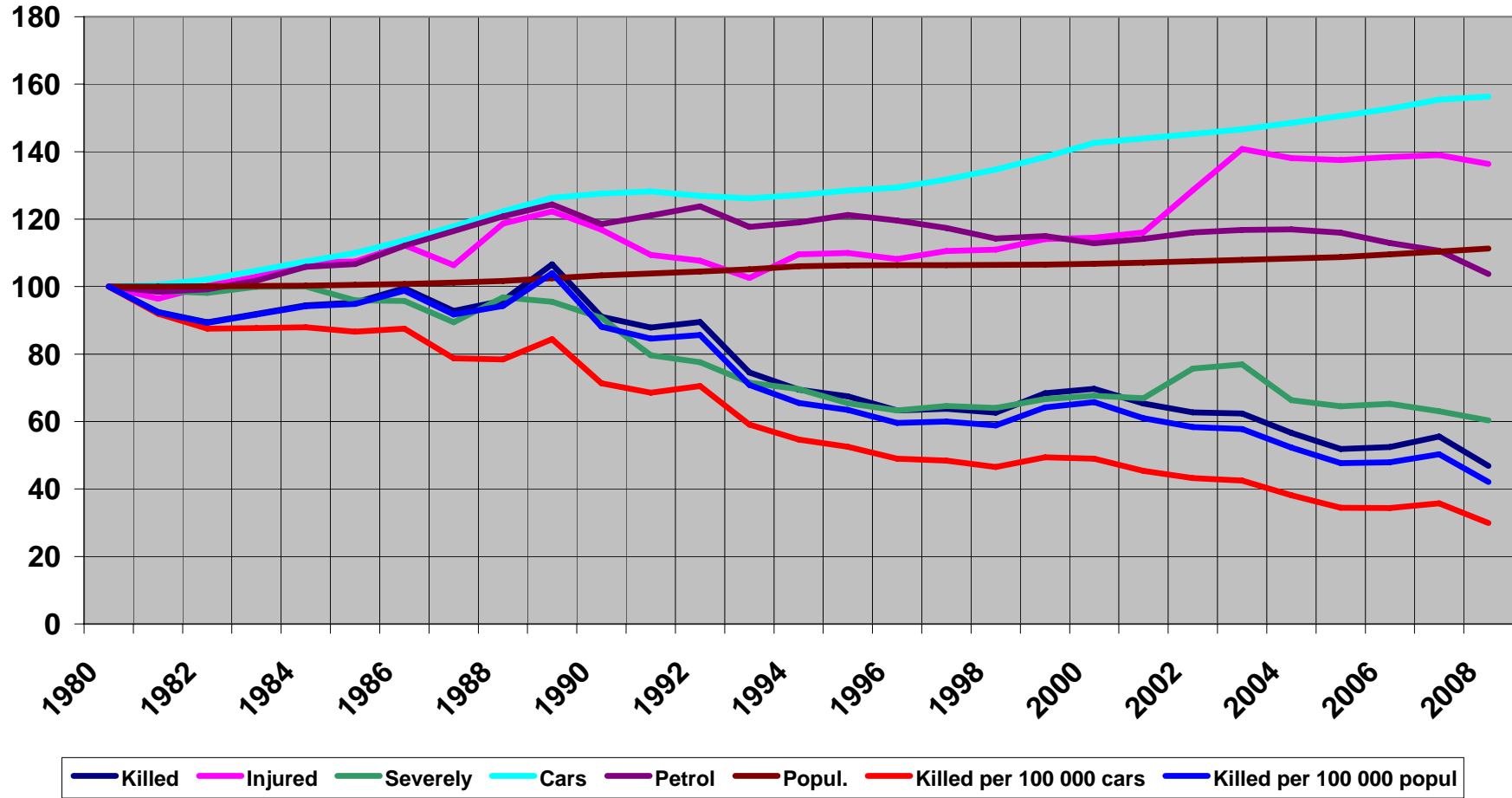


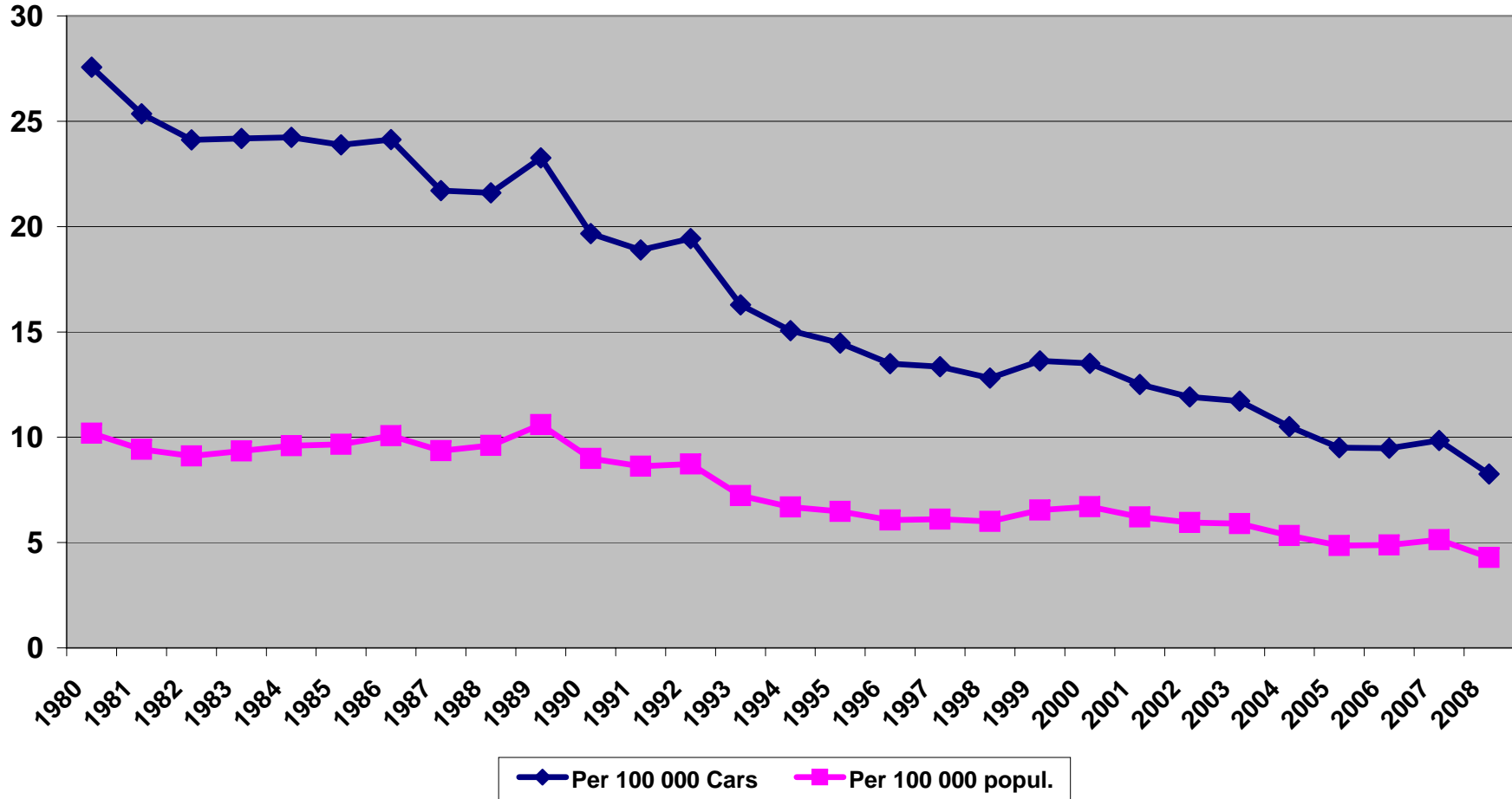
ROAD SAFETY STATISTICS SWEDEN 1980 - 2008

Year	Killed	Injured	Severely injured	Cars in use (1000) at end of year	Petrol Sales (1000m3)	Population (1000) at end of year	Killed per 100 000 Cars	Population
1980	848	19'246	6'064	3'077	4'751	8'318	27.6	10.2
1981	784	18'554	5'984	3'093	4'679	8'323	25.3	9.4
1982	758	19'277	5'950	3'143	4'712	8'327	24.1	9.1
1983	779	19'803	6'063	3'222	4'834	8'331	24.2	9.4
1984	801	20'635	6'068	3'305	5'028	8'343	24.2	9.6
1985	808	20'671	5'814	3'383	5'067	8'358	23.9	9.7
1986	844	21'614	5'804	3'497	5'328	8'382	24.1	10.1
1987	787	20'468	5'423	3'626	5'534	8'414	21.7	9.4
1988	813	22'838	5'869	3'764	5'739	8'459	21.6	9.6
1989	904	23'531	5'790	3'887	5'910	8'527	23.3	10.6
1990	772	22'497	5'501	3'925	5'630	8'591	19.7	9.0
1991	745	21'057	4'832	3'945	5'751	8'644	18.9	8.6
1992	759	20'727	4'705	3'906	5'879	8'692	19.4	8.7
1993	632	19'741	4'334	3'882	5'590	8'745	16.3	7.2
1994	589	21'083	4'221	3'912	5'655	8'816	15.1	6.7
1995	572	21'173	3'965	3'953	5'761	8'837	14.5	6.5
1996	537	20'810	3'837	3'981	5'683	8'844	13.5	6.1
1997	541	21'280	3'917	4'053	5'577	8'848	13.3	6.1
1998	531	21'356	3'883	4'145	5'427	8'854	12.8	6.0
1999	580	21'964	4'043	4'259	5'464	8'861	13.6	6.5
2000	591	22'034	4'104	4'388	5'361	8'883	13.5	6.7
2001	554	22'330	4'056	4'428	5'422	8'909	12.5	6.2
2002	532	24'742	4'592	4'468	5'515	8'941	11.9	6.0
2003	529	27'103	4'664	4'513	5'547	8'976	11.7	5.9
2004	480	26'582	4'022	4'570	5'557	9'011	10.5	5.3
2005	440	26459	3'915	4'632	5'508	9'048	9.5	4.9
2006	445	26'636	3'959	4'698	5'364	9'113	9.5	4.9
2007	471	26'749	3'824	4'782	5'255	9'183	9.8	5.1
2008	397	26'248	3'657	4'809	4'928	9'256	8.3	4.3
INDEX								
1980	100	100	100	100	100	100	100	100
1981	92.5	96.4	98.7	100.5	98.5	100.1	92.0	92.4
1982	89.4	100.2	98.1	102.1	99.2	100.1	87.5	89.3
1983	91.9	102.9	100.0	104.7	101.7	100.2	87.7	91.7
1984	94.5	107.2	100.1	107.4	105.8	100.3	87.9	94.2
1985	95.3	107.4	95.9	109.9	106.7	100.5	86.7	94.8
1986	99.5	112.3	95.7	113.6	112.1	100.8	87.6	98.8
1987	92.8	106.3	89.4	117.8	116.5	101.2	78.8	91.7
1988	95.9	118.7	96.8	122.3	120.8	101.7	78.4	94.3
1989	106.6	122.3	95.5	126.3	124.4	102.5	84.4	104.0
1990	91.0	116.9	90.7	127.6	118.5	103.3	71.4	88.1
1991	87.9	109.4	79.7	128.2	121.0	103.9	68.5	84.5
1992	89.5	107.7	77.6	126.9	123.7	104.5	70.5	85.7
1993	74.5	102.6	71.5	126.2	117.7	105.1	59.1	70.9
1994	69.5	109.5	69.6	127.1	119.0	106.0	54.6	65.5
1995	67.5	110.0	65.4	128.5	121.3	106.2	52.5	63.5
1996	63.3	108.1	63.3	129.4	119.6	106.3	48.9	59.6
1997	63.8	110.6	64.6	131.7	117.4	106.4	48.4	60.0
1998	62.6	111.0	64.0	134.7	114.2	106.4	46.5	58.8
1999	68.4	114.1	66.7	138.4	115.0	106.5	49.4	64.2
2000	69.7	114.5	67.7	142.6	112.8	106.8	49.0	65.7
2001	65.3	116.0	66.9	143.9	114.1	107.1	45.4	61.0
2002	62.7	128.6	75.7	145.2	116.1	107.5	43.2	58.4
2003	62.4	140.8	76.9	146.7	116.8	107.9	42.5	57.8
2004	56.6	138.1	66.3	148.5	117.0	108.3	38.1	52.3
2005	51.9	137.5	64.6	150.5	115.9	108.8	34.5	47.7
2006	52.5	138.4	65.3	152.7	112.9	109.6	34.4	47.9
2007	55.5	139.0	63.1	155.4	110.6	110.4	35.7	50.3
2008	46.8	136.4	60.3	156.3	103.7	111.3	30.0	42.1
<i>Source. SIK/Statistics Sweden</i>								

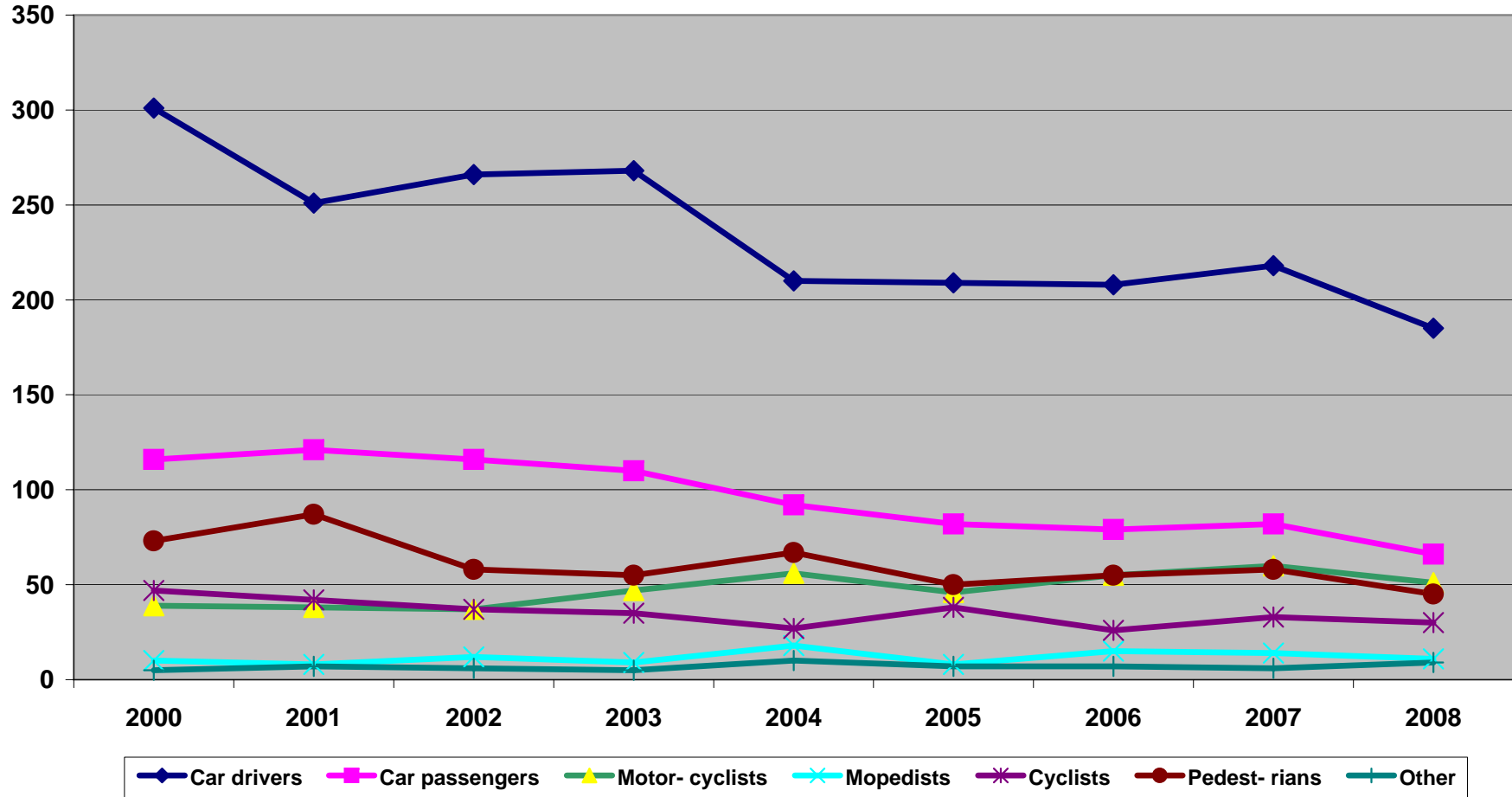
ROAD SAFETY DEVELOPMENT IN SWEDEN 1980 - 2008



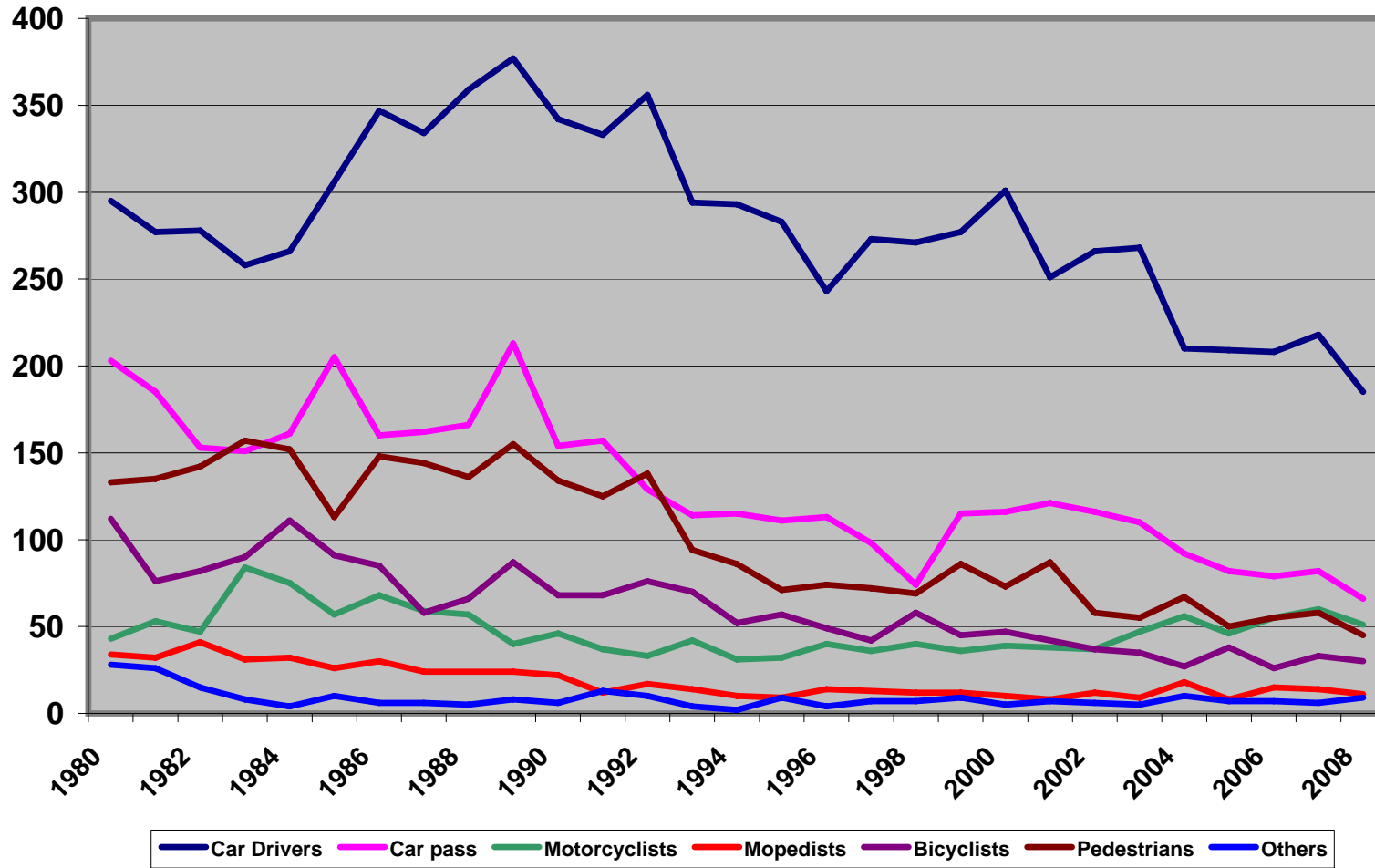
KILLED PER 100 000 CARS AND POPULATION 1980 - 2008



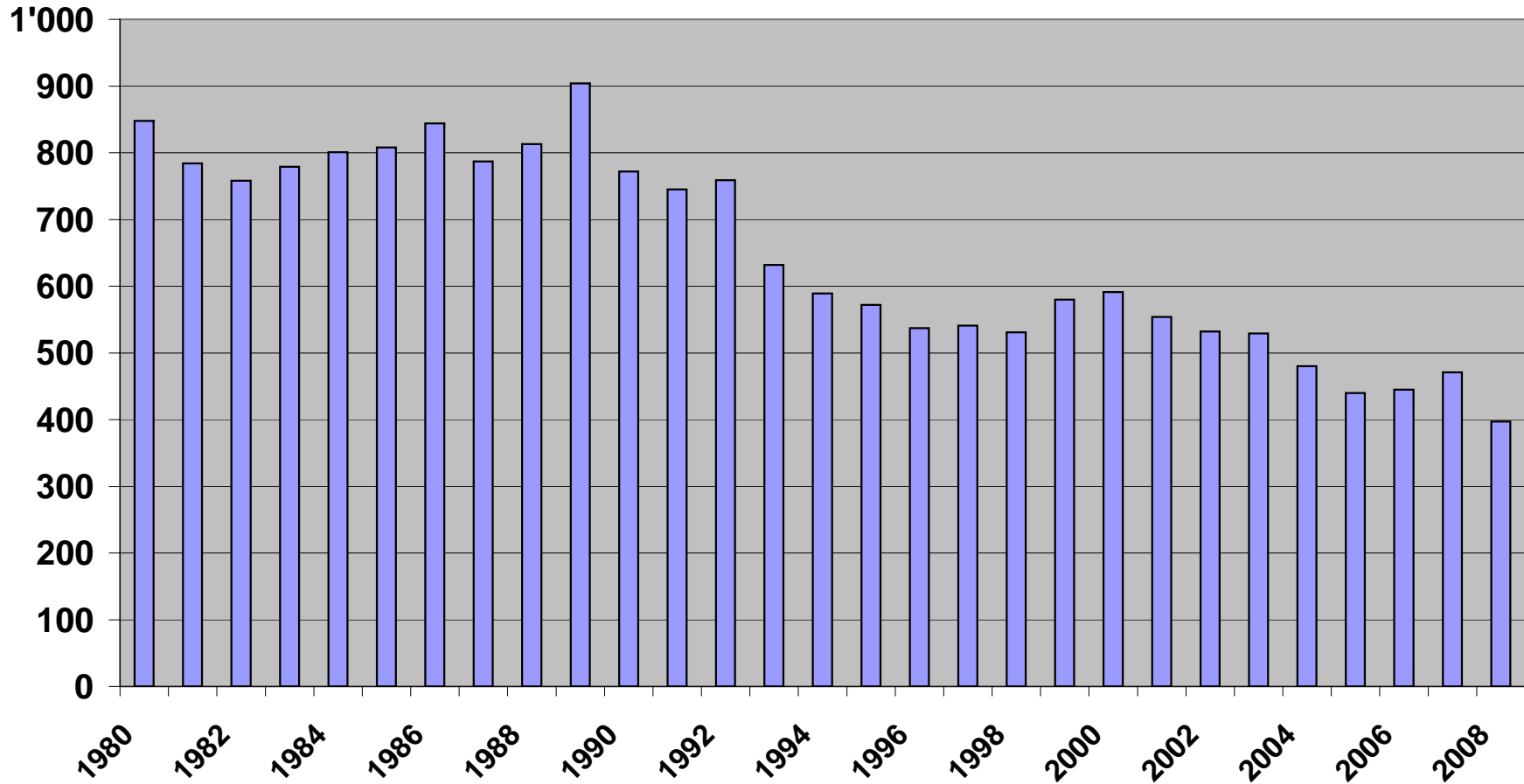
Fatalities by road-user 2000-2008



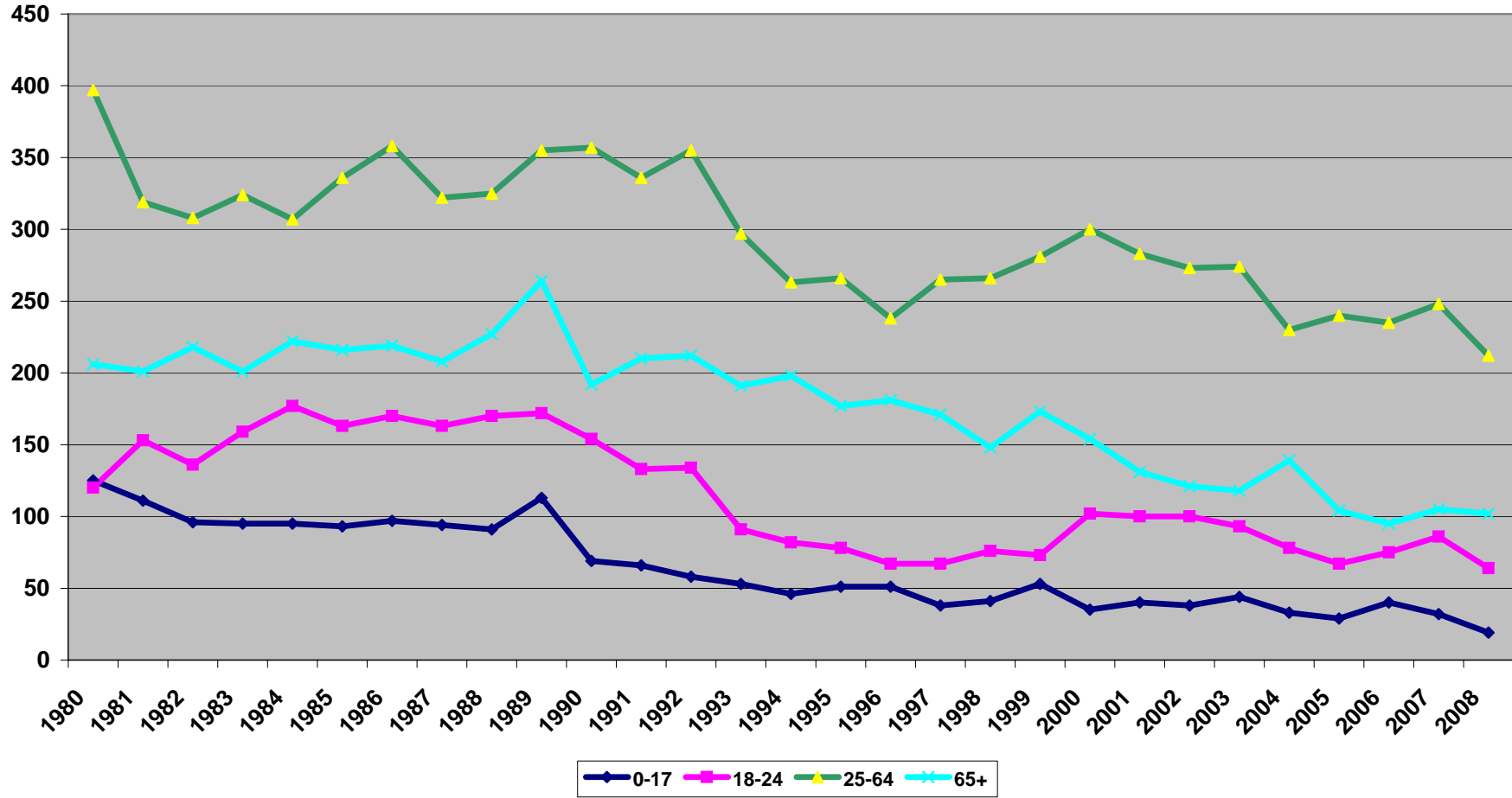
TRAFFIC FATALITIES BY ROAD USER 1980-2008



TOTAL NUMBER OF FATALITIES 1980 - 2008



Fatalities by age-group 1980 - 2008



Fatalities by age-group 2000-2008

