

Strengthening of the national road safety management capacities Project – state of the art

**UN Transport Legal Instruments – a tool for better Road
Safety Management**

Palais des nations, Geneva
 Nenad Nikolic, Regional Advisor
 5 July 2017

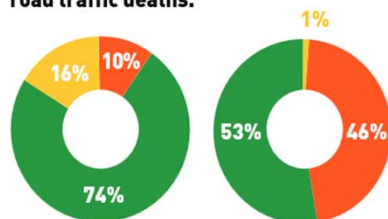
TRANSPORT



Road Traffic Injuries: The facts (WHO, 2015)



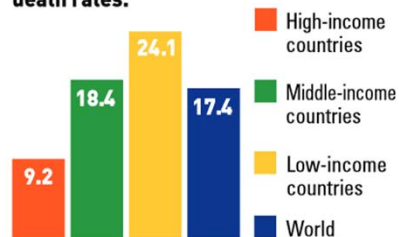
Although low- and middle-income countries have only half of the world's vehicles, they have 90% of the world's road traffic deaths.



DEATHS

VEHICLES

Low-income countries have the highest road traffic death rates.



Road traffic fatalities per 100 000 population

TRANSPORT

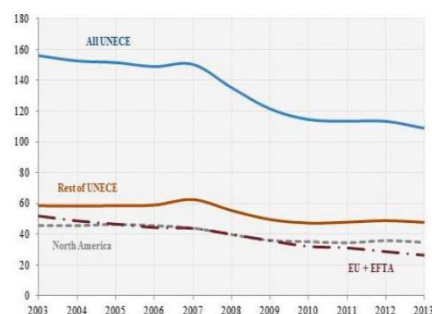


Road Safety trends (UNECE, 2015)



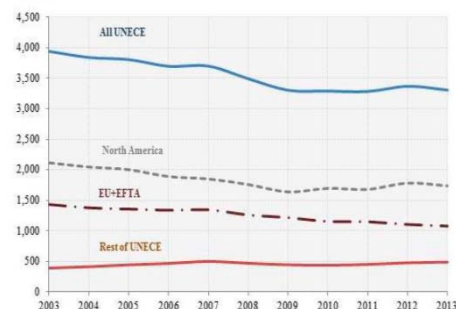
Road traffic fatalities by region, 2003–2013 (UNECE, 2015)

Thousands



Road traffic accidents by region, 2003–2013 (UNECE, 2015)

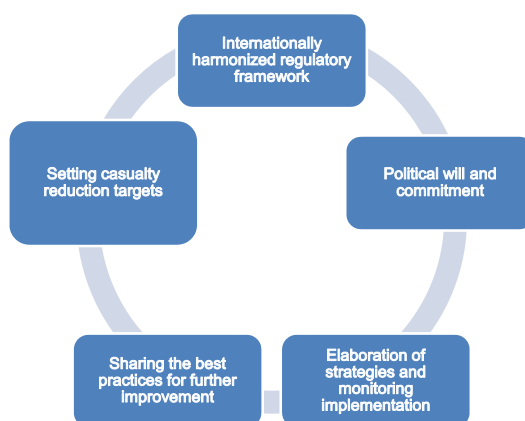
Thousands



TRANSPORT



Progress in road safety – result of serious and systematic efforts



TRANSPORT



Background (WHO, 2013)



	Deaths/100K (WHO estimate)	Deaths (Country report)
Albania	15.1	295
The Dominican Republic	29.3	2,164
Georgia	11.8	514
Viet Nam	24.5	9,156
Cameroon	27.6	1,095
Uganda	27.4	2,937
Sweden	2.8	260
Netherlands	3.4	570
UK	2.9	1770

TRANSPORT



Road Safety Management Capacity Building Project



- Cooperation between UNECE, ESCAP and ECLAC
- 4 countries globally

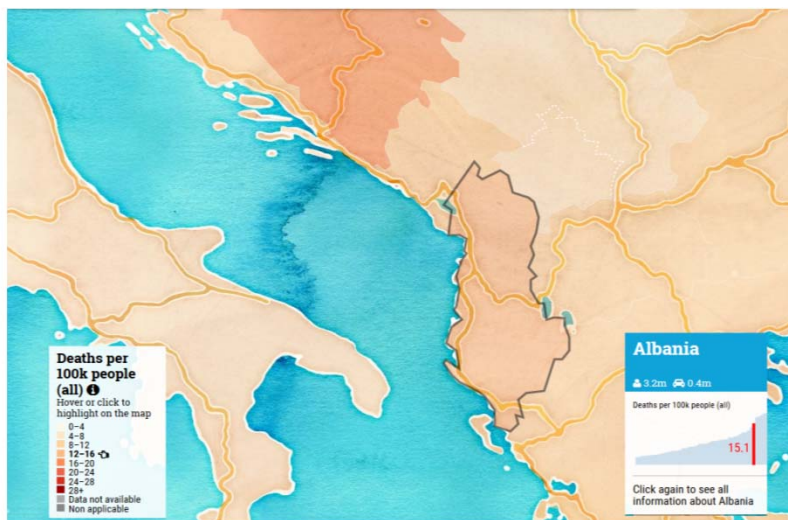
Aim:

To strengthen the national road safety management system capacities of selected developing countries and countries with economies in transition

TRANSPORT



Albania (WHO, 2013)



TRANSPORT

Transport Statistics Infocard



Area: 28,748 km² • Inhabitants: 2,893,054 (2014)
Contracting Party to 30 UN Transport Conventions under the purview of UNECE Inland Transport Committee. Contracting Party to 14 UN Road Safety Conventions.



Road and rail traffic	2014	Road casualty statistics	2014
Number of passenger cars (thousand)	378.1	Fatalities	264
Motorization rate (No. of passenger cars per thousand inhabitants)	131	Injured	2,353
Passenger-km by road (million)	8,650	Injury accidents	1,954
Tonne-km by road (million)	3,500	Road deaths per	
Passenger-km by rail (million)	8	Million inhabitants	91
Tonne-km by rail (million)	40	100,000 passenger cars	67
Tonne-km by Inland Waterways (million)	-	Severity of road traffic accidents	
		Fatalities per 1,000 injury accidents	138

Figure 1: Passenger-km by road and by rail (million)

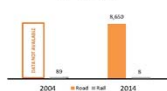


Figure 3: Inland transport modal split - Freight (Tonne-km)

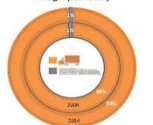


Figure 2: Casualties (fatalities and injuries, per million inhabitants) Δ -1,000

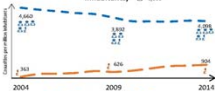
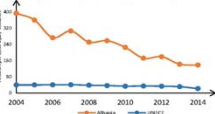


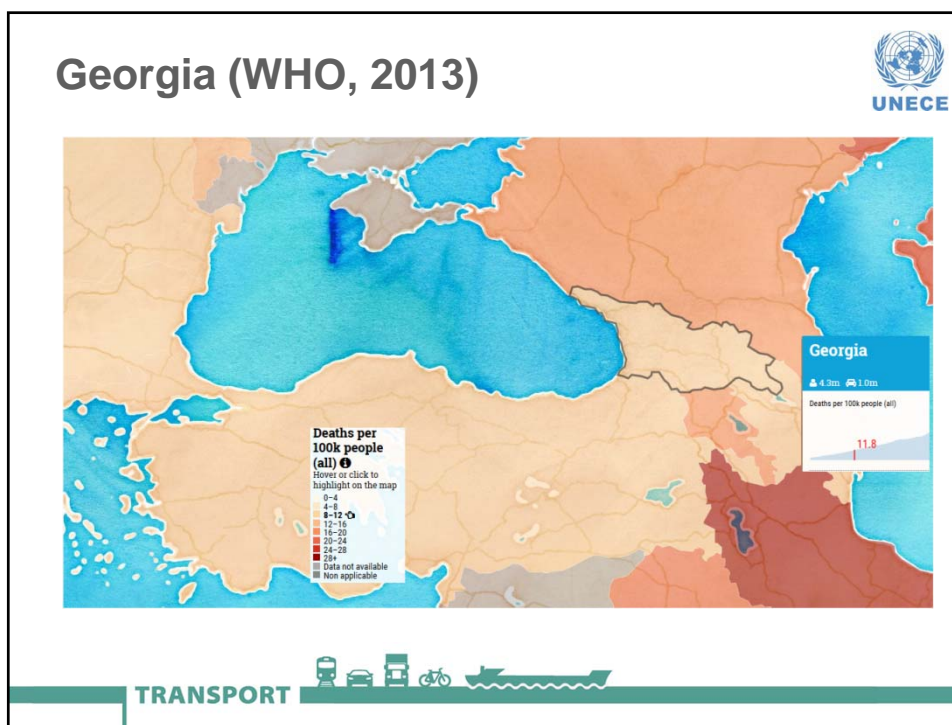
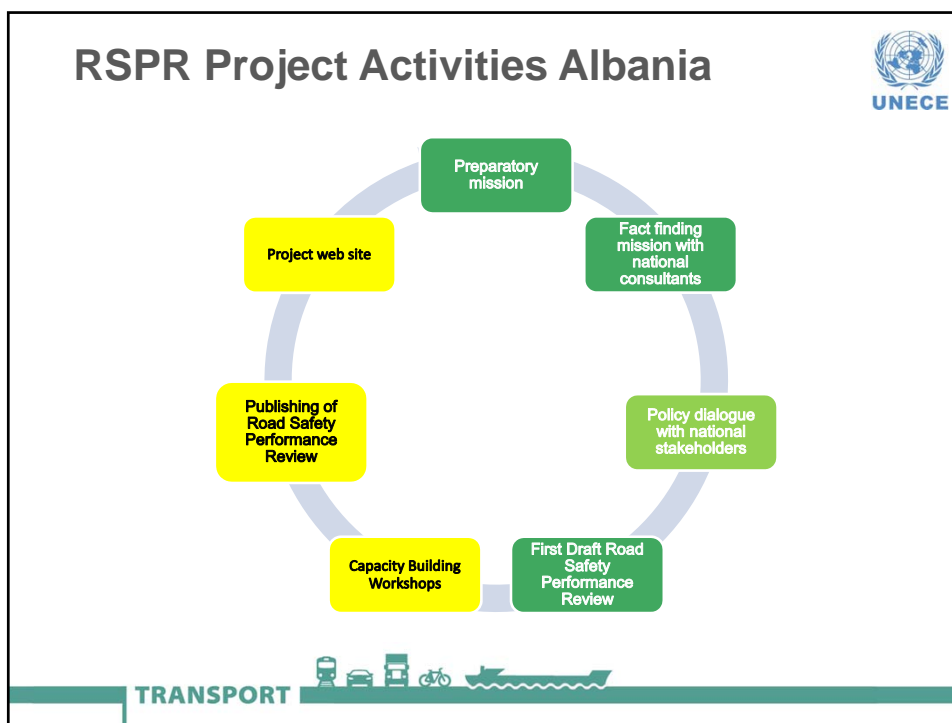
Figure 4: Evolution of the severity of road traffic accidents (Fatalities per 1,000 injury accidents)

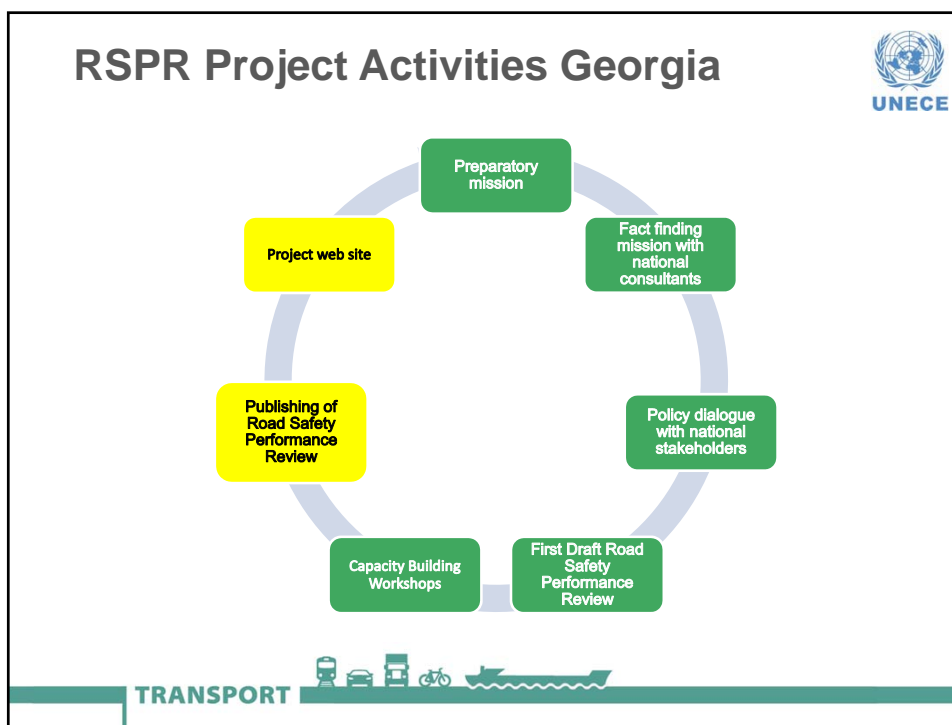
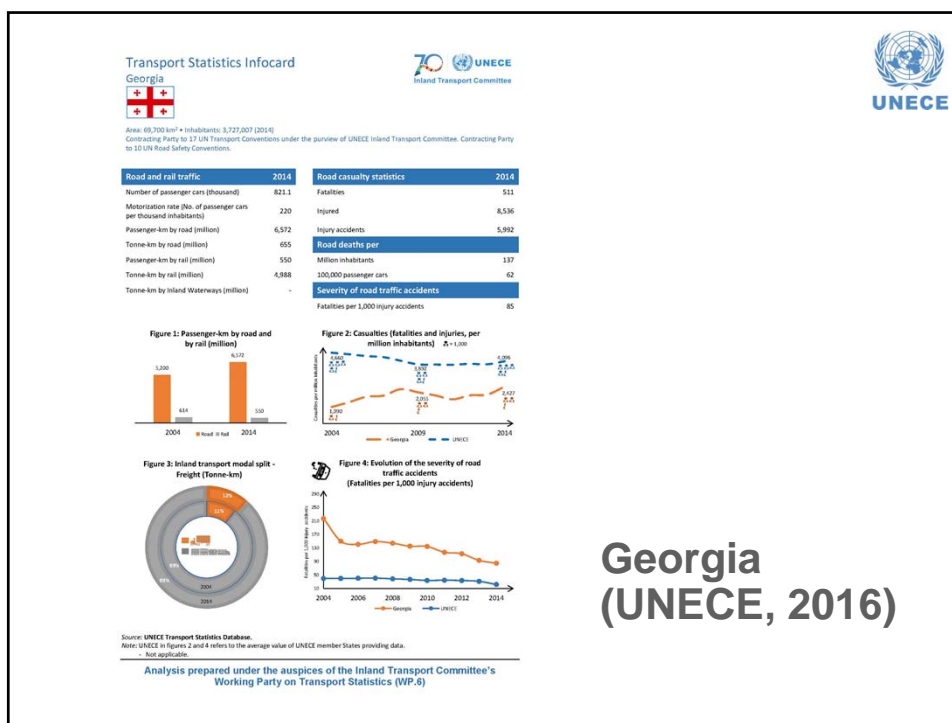


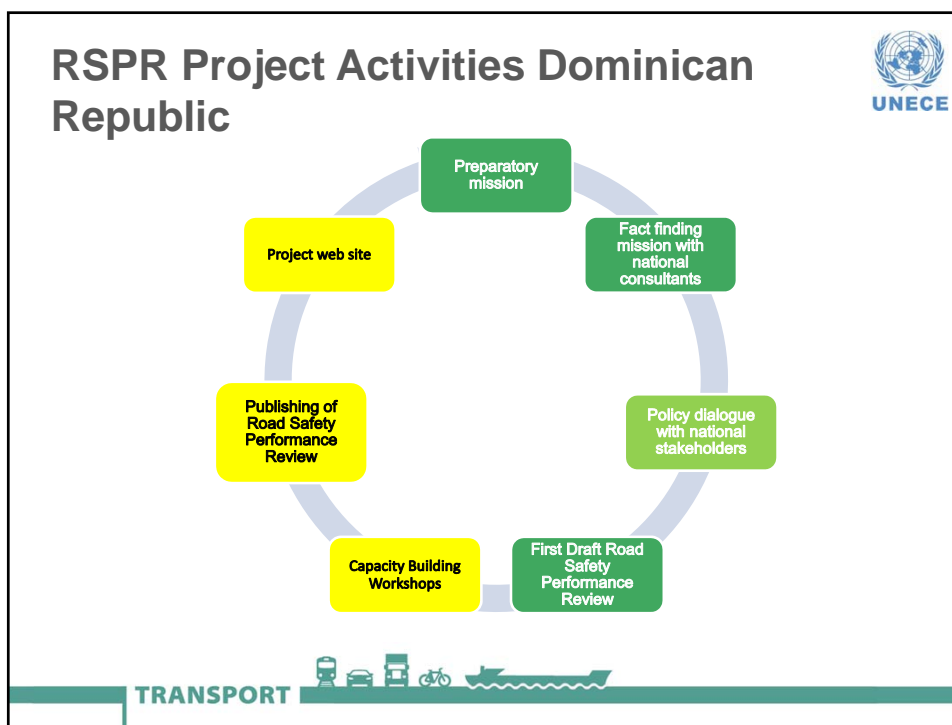
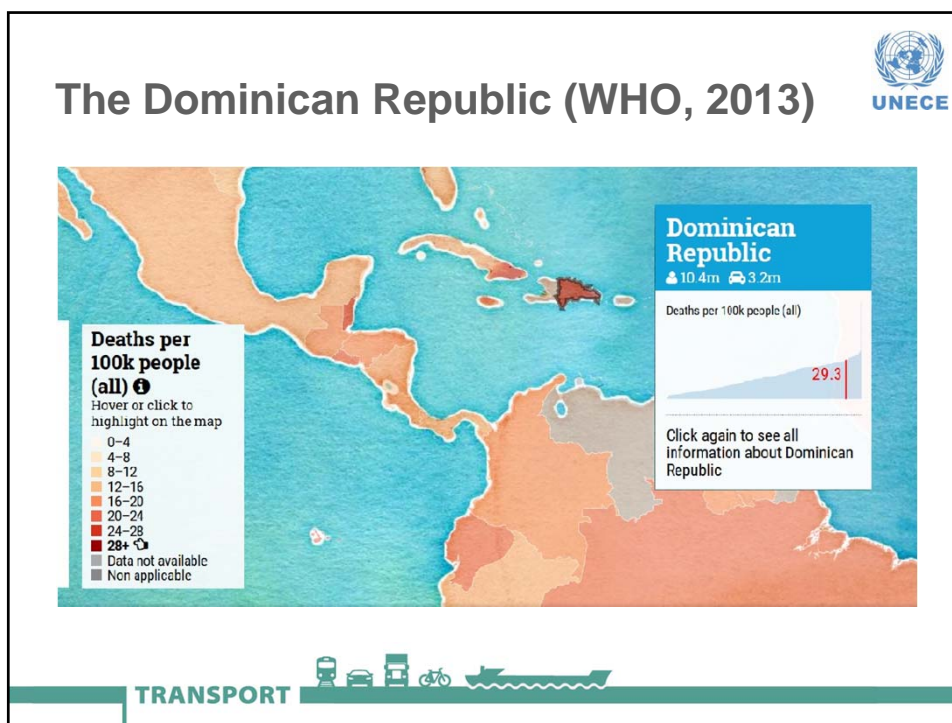
Albania
(UNECE, 2016)

Source: UNECE Transport Statistics Database.
Note: UNECE in figures 2 and 4 refers to the average value of UNECE member States providing data.
- Not applicable

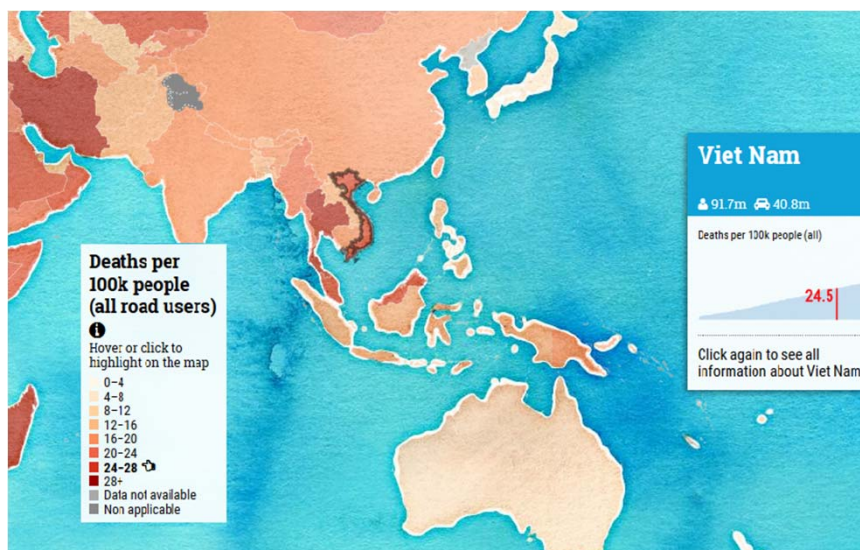
Analysis prepared under the auspices of the Inland Transport Committee's Working Party on Transport Statistics (WP.6)



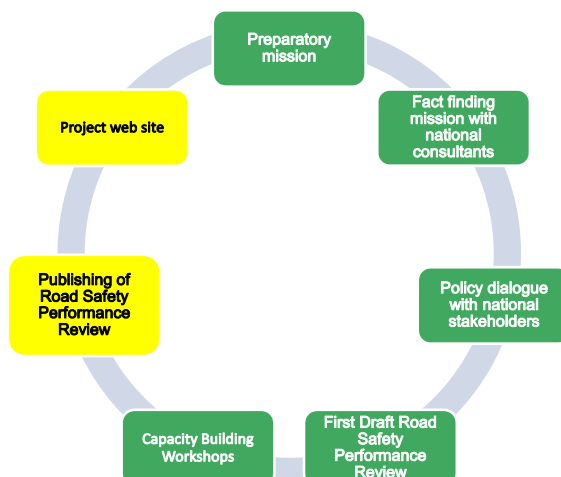




Viet Nam (WHO, 2013)



RSPR Project Activities Viet Nam



TRANSPORT





The next steps

- Update Project web site
- Comment second draft Road Safety Performance Review (RSPR) based on discussions during policy dialogue session
- Connect analysis and recommendations and prioritize
- Prepare final RSPR and discuss with national stakeholders
- Translate RSPR into national languages and prepare a printed version

TRANSPORT



Thank you

Nenad Nikolic, Regional Advisor
UNECE Sustainable
Transport Division
nenad.nikolic@unece.org



TRANSPORT

