



Modernization of Border Crossing Points in Turkey

14 June 2012,
Geneva

Modernization of BCPs

LEGAL BASIS: :Law No.3996 (1994)
: Protocols between parties

PARTIES of COOPERATION:

-Ministry of Customs and Trade: Public Administration

- Private Companies/Associations

Modernization of Border Crossing Points

A Model based on **Public-Private Partnership:**

Build-Operate-Transfer

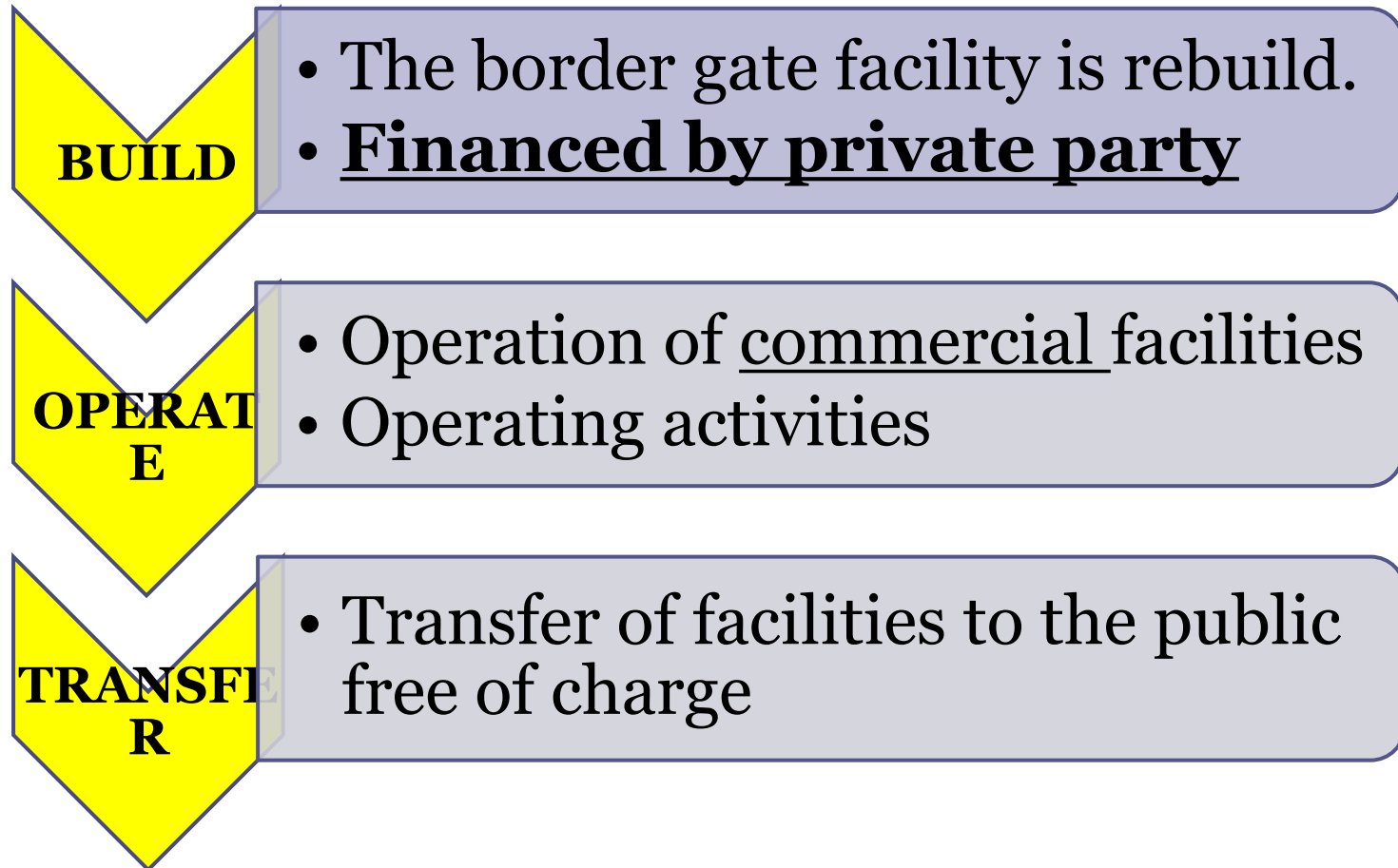
Applied in Land Borders across Turkey

Modernization of BCPs

Partnership with PRIVATE PARTIES (PROTOCOLS)

- UND- Association of International Transporters
- UMAT –Private Company
- GTI-Private Company

BUILD- OPERATE-TRANSFER MODEL



FIRST EXPERIENCES-PROJECTS

İPSALA

UMAT-2004

GURBULAK-

UND-2003



Modernization of BCPs

Since 2005- Partnership with GTI

- GTI-Private Company

(partners : the Union of Chambers and Commodity Exchanges of Turkey (TOBB) and 137 Local Chambers all around Turkey

COMPLETED PROJECTS

HAMZABEYLİ

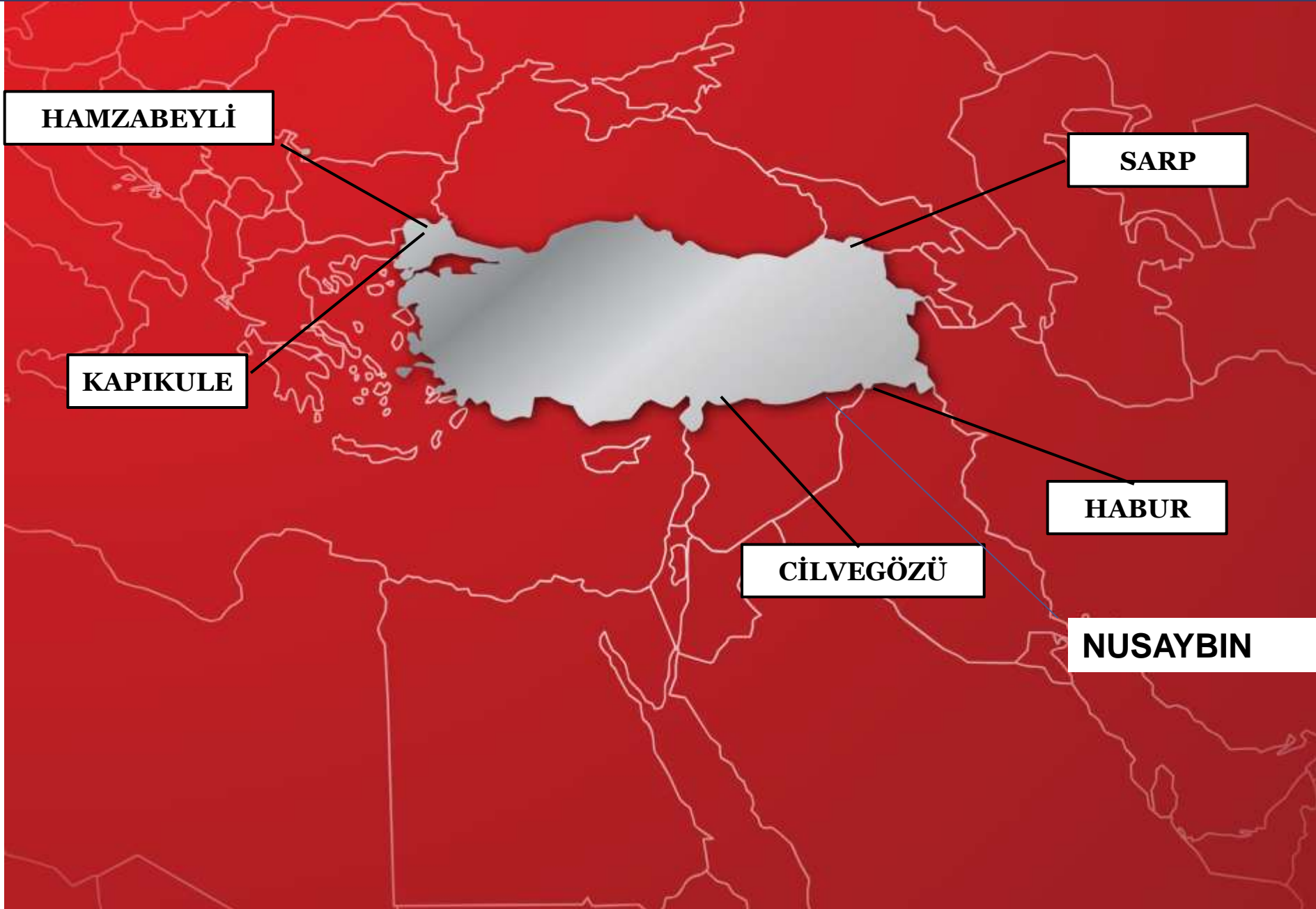
SARP

KAPIKULE

HABUR

CİLVEGÖZÜ

NUSAYBIN



Modernization of BCPs

PURPOSE of BOT model:

Changing the ineffective and inefficient buildings/premises into new ones ,

- By suitable architectures,
- Enabling rapid customs transactions,
- Responding technological innovations,
- Providing contemporary environment for the users.

Kapıkule (Turkey-Bulgaria) (Before Modernization)



Kapıkule (Turkey-Bulgaria) (After Modernization)



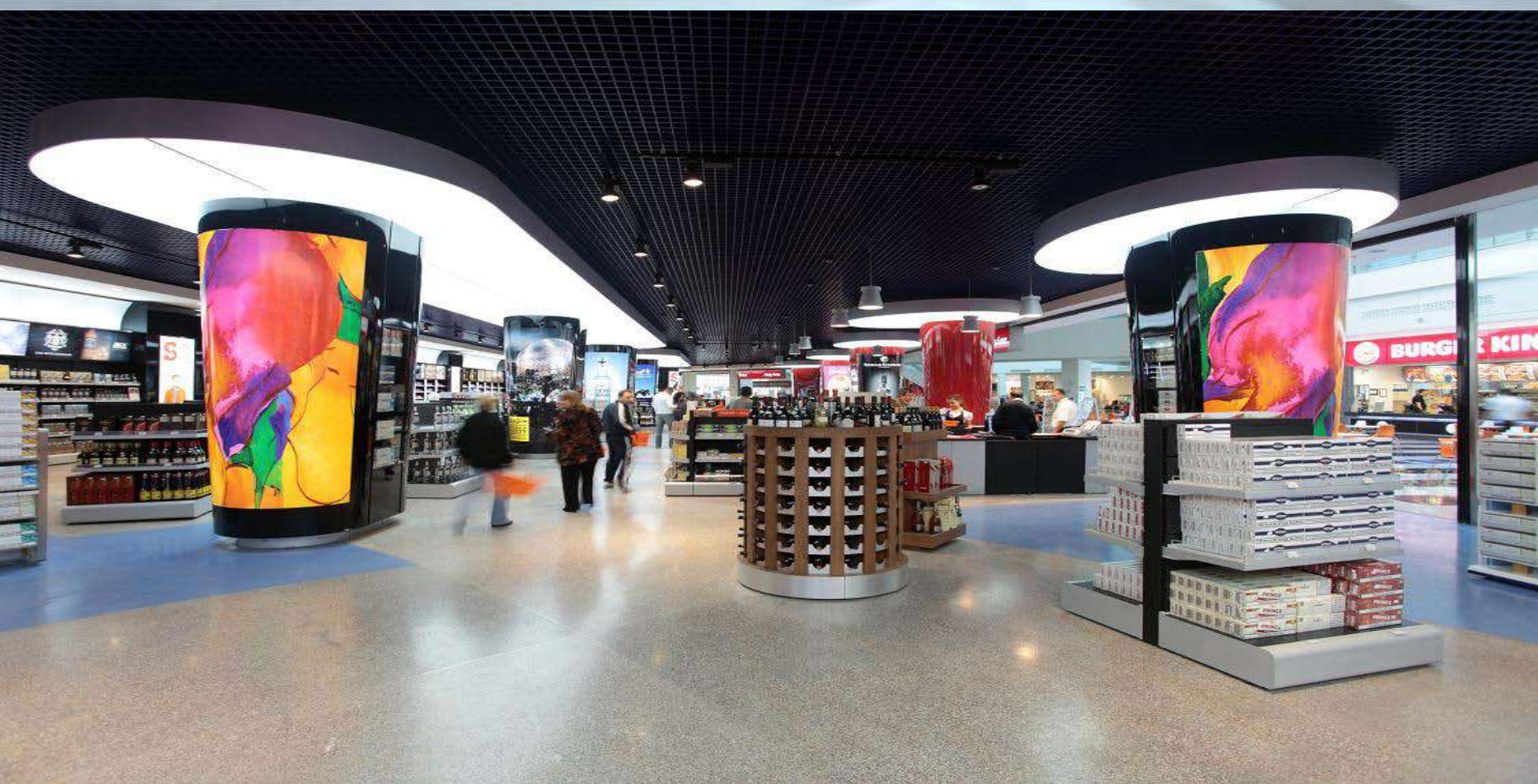
Kapıkule (Turkey-Bulgaria) (After Modernization)



Kapıkule (Turkey-Bulgaria) (After Modernization)



Kapıkule (Turkey-Bulgaria) (After Modernization)



Kapıkule (Turkey-Bulgaria) (After Modernization)



UPCOMING PROJECTS

Protocols already signed: 17.05.2012
(the so-called PACKAGE PROTOCOL)

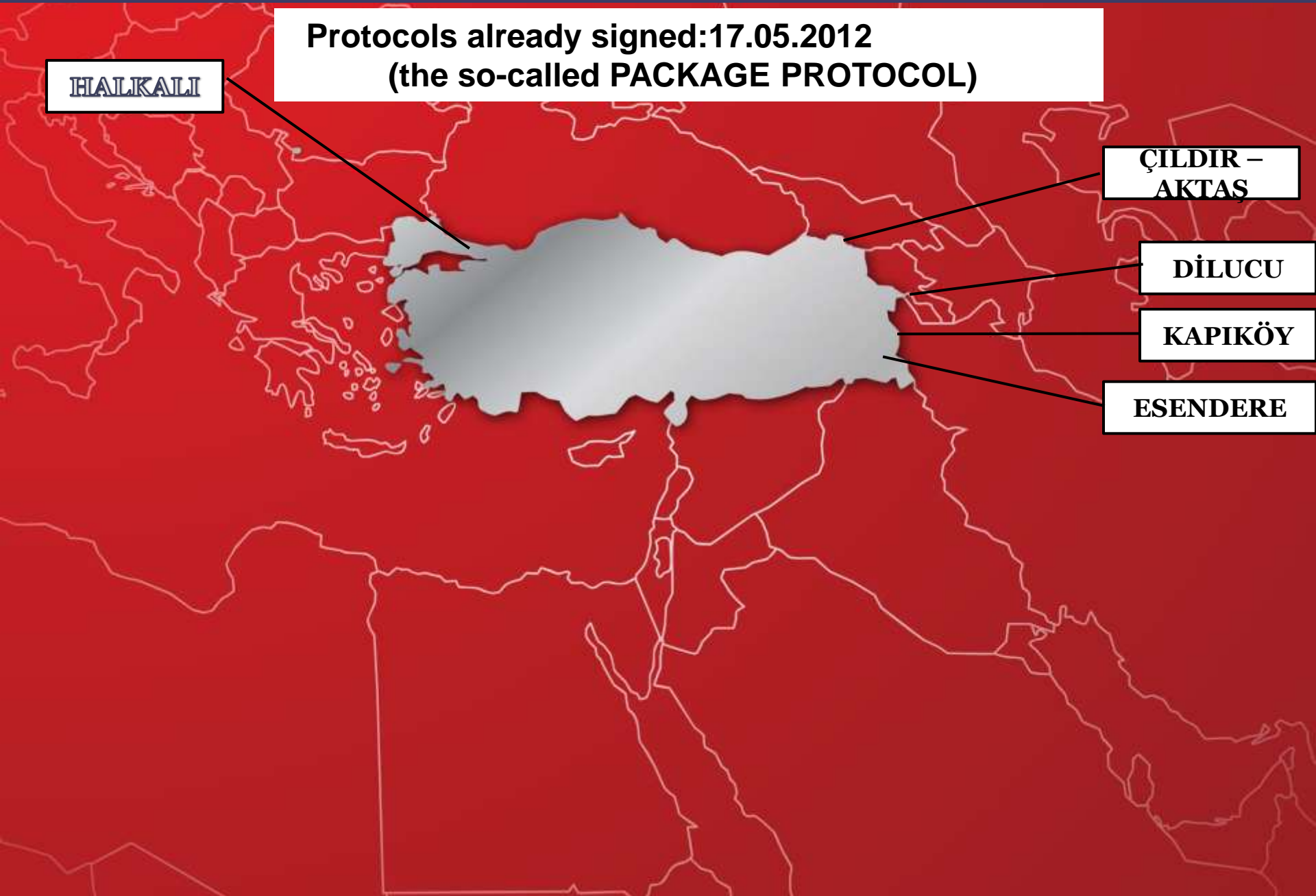
HALKALI

ÇILDIR –
AKTAŞ

DİLUCU

KAPIKÖY

ESENDERE



FUTURE PROJECTS

DEREKÖY

TÜRKGÖZÜ

AKÇAKALE

KARKAMIŞ

ÖNCÜPINAR

YAYLADAĞI



Modernization of BCPs

**Paves the way for further
INNOVATIONS!**



INTERNATIONAL COOPERATION

Joint Use of Border Gates

A Model based on International
Cooperation:

Turkey-Georgia

pilot is on the way!

Joint Use of Border Gates

International Legal Basis:

- (WCO-Revized Kyoto Convention)
- 1982 International Convention on the Harmonization of Frontier Controls of Goods (UN ECE)

Different Models in Operation

- **Concept:** Joint or juxtaposed customs offices ➔ joint customs control
- Aims at simplification and harmonization of border procedures.
- Elimination of duplicated controls and processes.



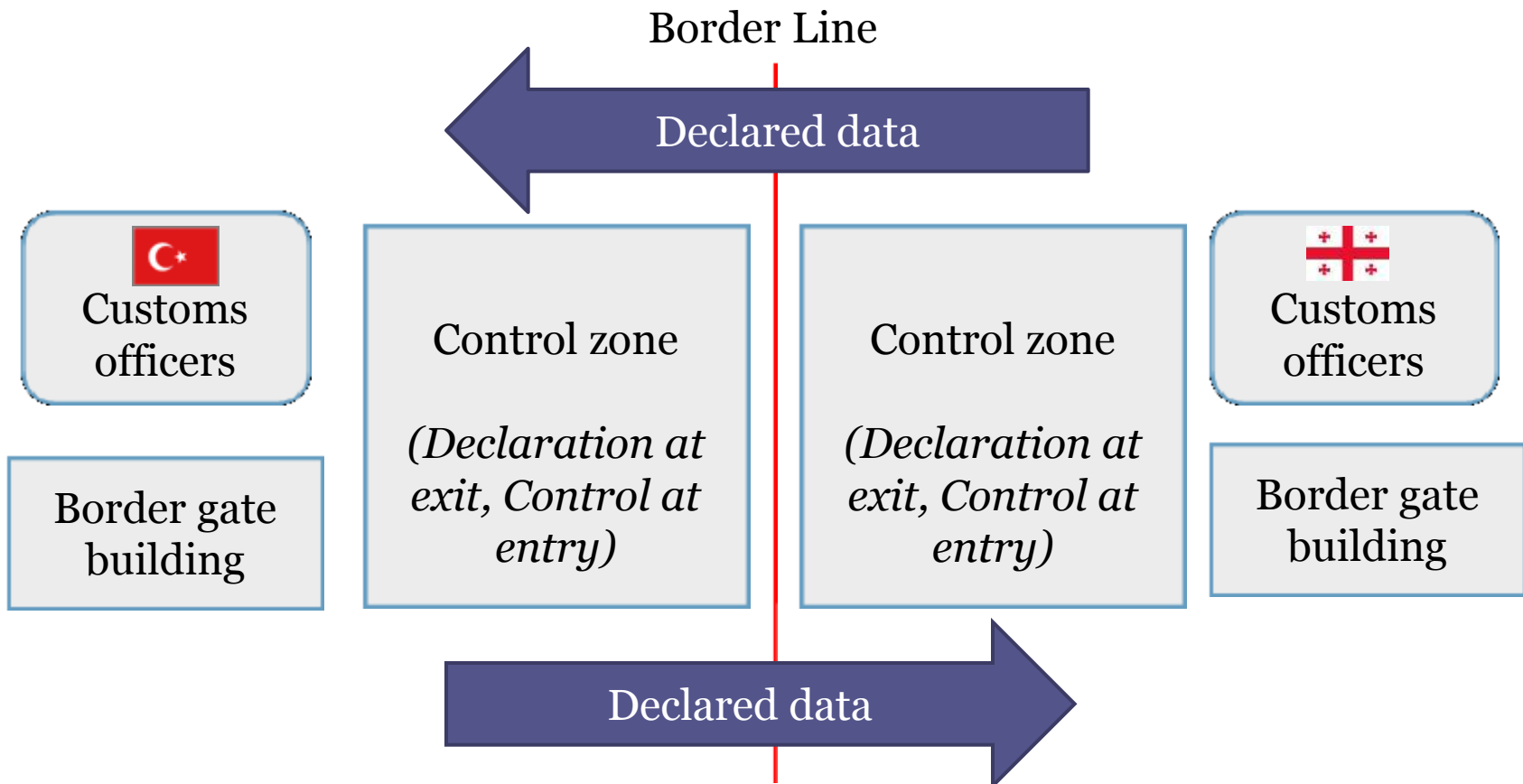
Several models as also cited in the UNECE-OSCE Handbook

Different Models in Operation

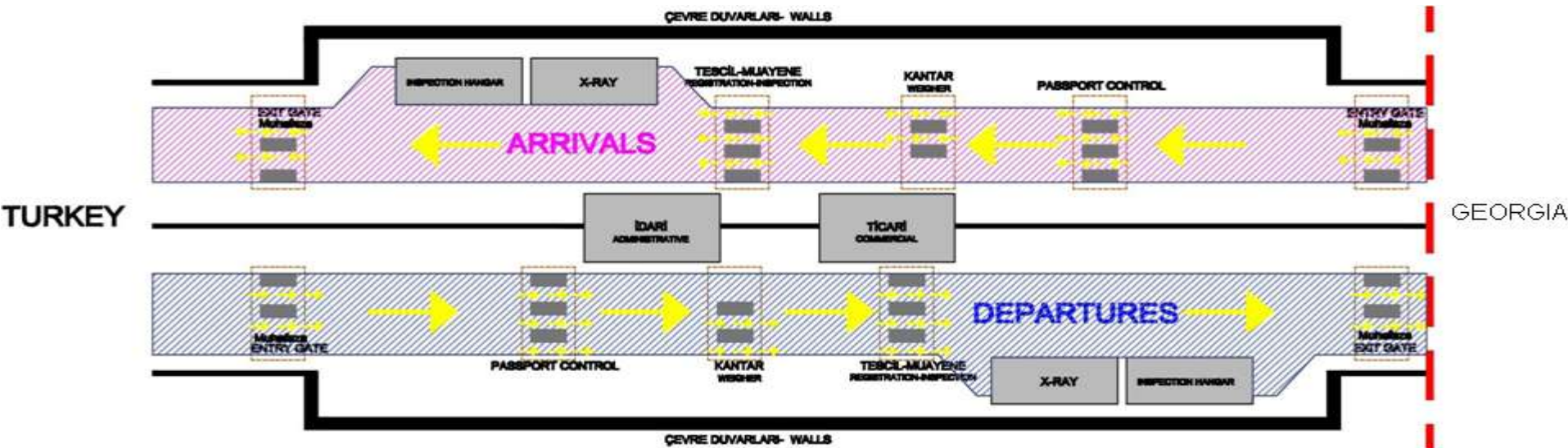
- I. Facilities intersecting the “border”
- II. Facilities located within one state
- III. Split facilities with exchange of personnel

Turkey-Georgia

(Agreement signed on 08.10.2010)

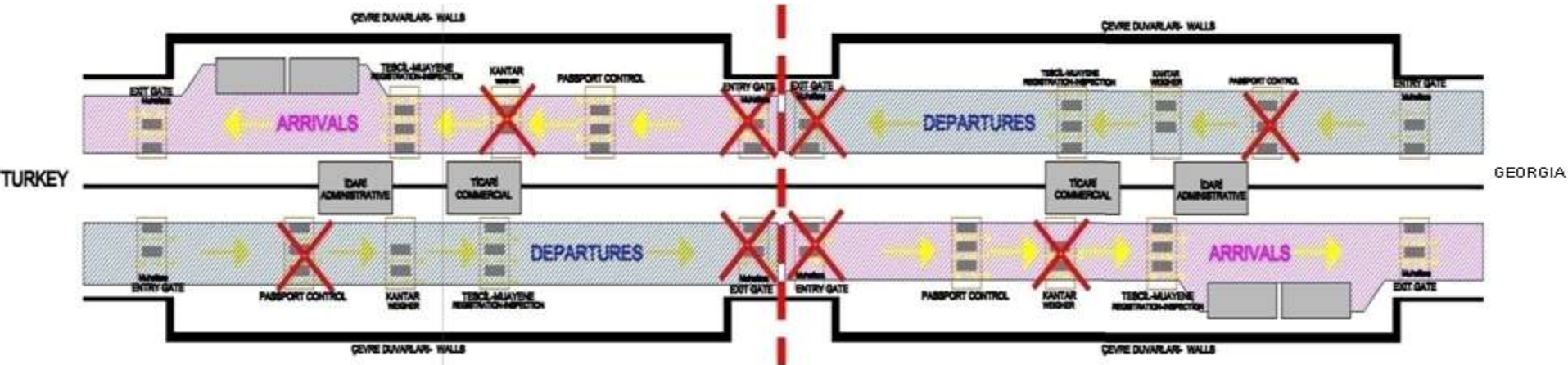


Current Exit Procedure



- 1) Customs Enforcement record
- 2) Passport
- 3) Weighbridge
- 4) Registration, Transportation
- 5) Pay desk
- 6) Inspection
- 7) X-Ray
- 8) Customs Enforcement

Procedures in Joint Use



EXIT

- 1) Customs enforcements record
- 2) Passport
- 3) Weighbridge
- 4) Registration, Transportation

ENTRY

- 1) Inspection
- 2) X-Ray
- 3) Customs Enforcement

EXCEPTIONAL

- 1) Quarantine Control
- 2) Disinfection
- 3) Radioactivity Control
- 4) Agricultural Control

Prerequisites before action

- Political will
- Administrative strategy
- Motivation of staff

Work done

- Analysis of current workflows
- Determination of needs and priorities
- Approach and consultations
- Training

Other Aspects of Border Crossings/Management

Besides other aspects, the most important feature that needs particular attention is

HUMAN RESOURCES MANAGEMENT

Investment on customs and border staff

→ Training is a prerequisite

In service training policy in Turkey:

2011- 13326 personnel- 6 programs covered 455 staff (staff of customs offices were called back to HQ for training-courses covered variable subjects(ie.transport legislation, communication skills,intelligence,)

2012- 7517 personnel (envisaged)

OSCE-UNECE Handbook of Best Practices at Border Crossings

- Provides “guideline”, but does not impose a “check list”
- Can be adapted to the particular needs of each MS

A guide for government agencies + private sector

-Up to date reference

-factual information

-Comprehensive clear picture of best practices



THANK YOU

Didem DIRLIK, Head of Department

*Republic of Turkey
Ministry of Customs and Trade
DG for the EU and External Relations
d.dirlik@gumrukticaret.gov.tr*