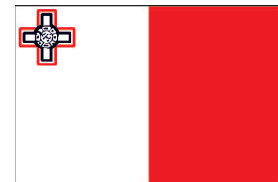


Transport Statistics Infocard

MALTA



• Area: 316 km² • Inhabitants: 482,070 (2018)

Contracting Party to 14 UN Transport Conventions (of which 4 UN Road Safety Conventions) under the purview of UNECE Inland Transport Committee.

Road and rail statistics

Number of passenger cars (thousand), 2018	300
Motorization rate (No. of passenger cars per thousand inhabitants), 2018	623
New registrations of alternative fuel passenger cars (% of total), 2018	2.3
Length of railway lines (km)	..

Road casualty statistics

Fatalities, 2017	19
Injured, 2017	1,854

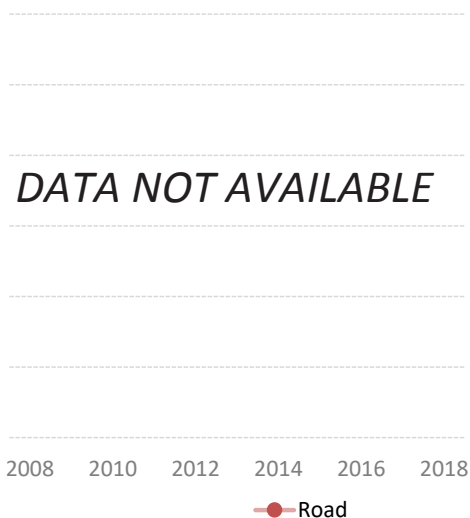
Road deaths per

Million inhabitants, 2017	41
100,000 passenger cars, 2017	7

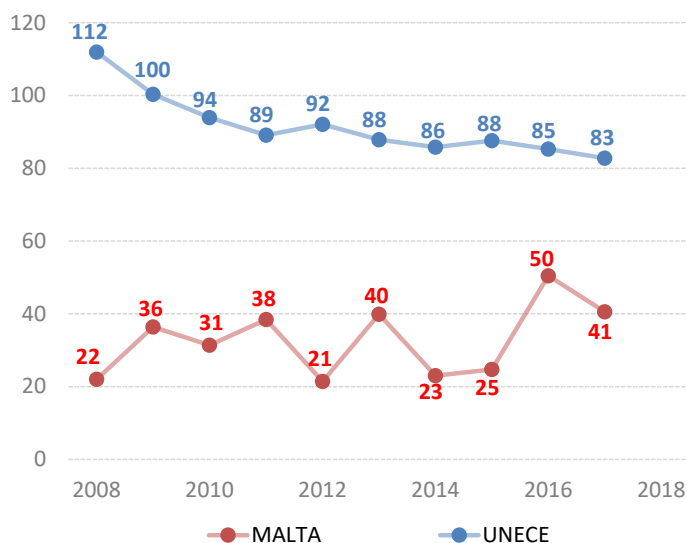
Vulnerable road users (% of total deaths)

Pedestrian and cyclists	..
Motorcyclists, 2009	13.3

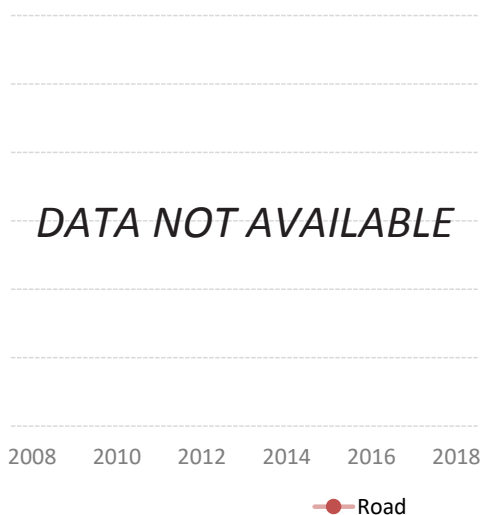
Passenger-km by mode (million) and modal share (%)



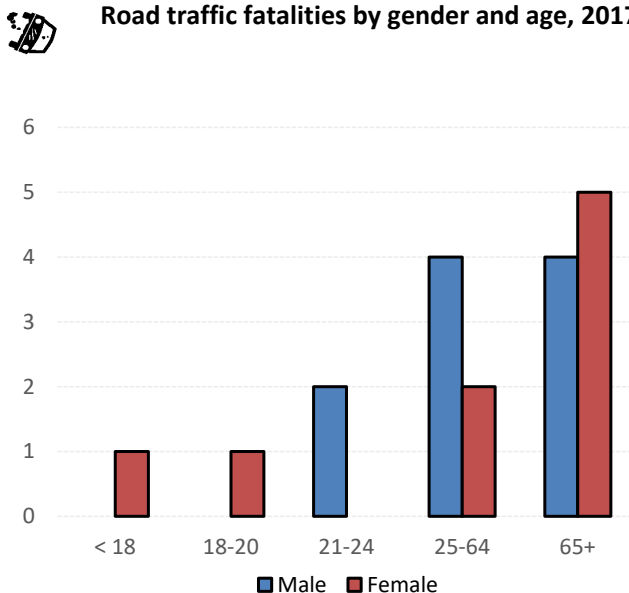
Road fatalities per million inhabitants



Tonne-km by mode (million) and modal share (%)



Road traffic fatalities by gender and age, 2017



Source: UNECE Transport Statistics Database.

Note: For road safety graphics, UNECE refers to the average value of ECE member States. IWW = inland waterways. Alternative fuel refers to fuel types other than petrol, diesel or hybrids.

- Not applicable / .. Not available.