

# Transport Statistics Infocard

## LATVIA



• Area: 64,589 km<sup>2</sup> • Inhabitants: 1,926,190 (2018)

Contracting Party to 20 UN Transport Conventions (of which 9 UN Road Safety Conventions) under the purview of UNECE Inland Transport Committee.

### Road and rail statistics

Number of passenger cars (thousand), 2018	708
Motorization rate (No. of passenger cars per thousand inhabitants), 2018	367
New registrations of alternative fuel passenger cars (% of total), 2018 <sup>1</sup>	0.8
Length of railway lines (km), 2018 <sup>2</sup>	1,860

### Road casualty statistics<sup>3</sup>

Fatalities, 2017	136
Injured, 2017	4,824

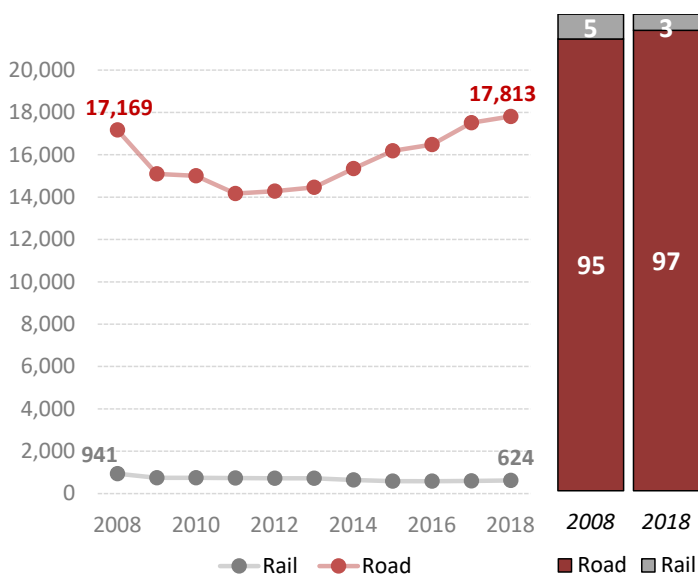
### Road deaths per<sup>3</sup>

Million inhabitants, 2017	70
100,000 passenger cars, 2017	20

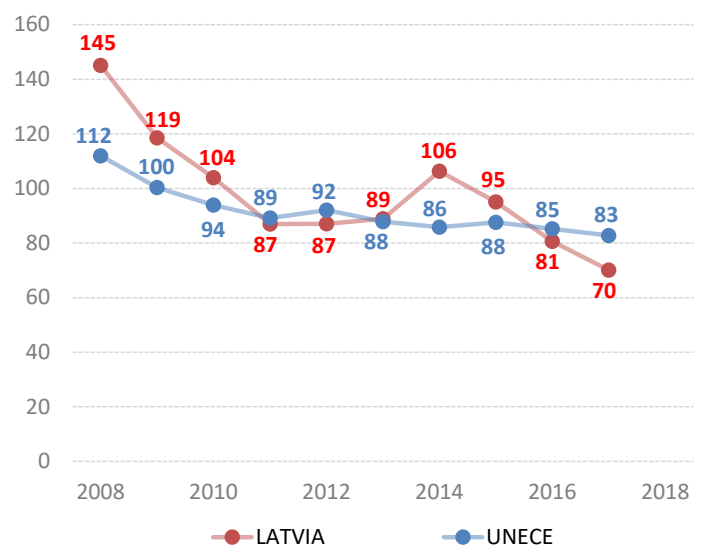
### Vulnerable road users (% of total deaths)<sup>3</sup>

Pedestrian and cyclists, 2013	46.4
Motorcyclists, 2009	2.0

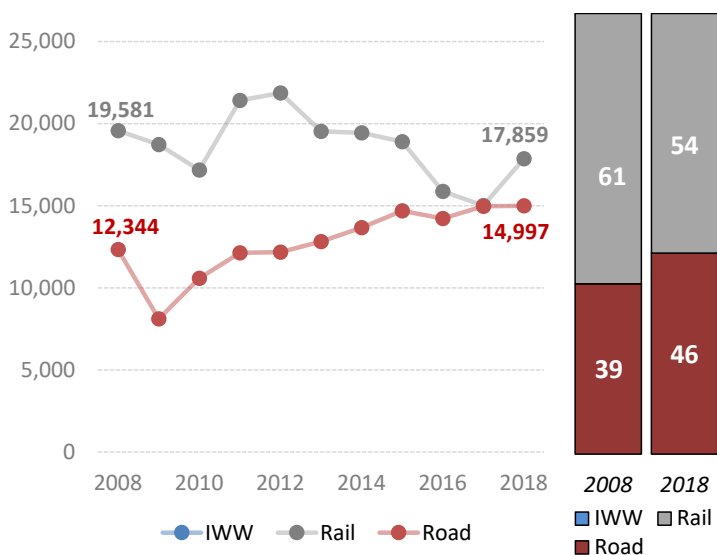
### Passenger-km by mode (million) and modal share (%)



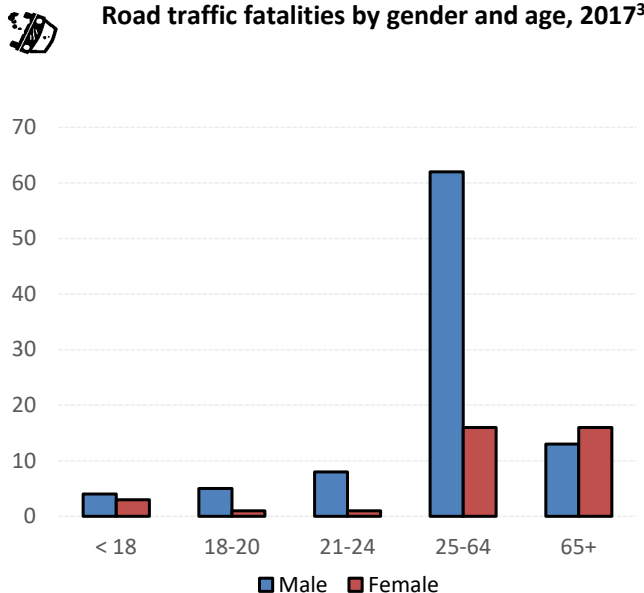
### Road fatalities per million inhabitants<sup>3</sup>



### Tonne-km by mode (million) and modal share (%)



### Road traffic fatalities by gender and age, 2017<sup>3</sup>



Source: UNECE Transport Statistics Database.

Note: For road safety graphics, UNECE refers to the average value of ECE member States. IWW = inland waterways. Alternative fuel refers to fuel types other than petrol, diesel or hybrids.

<sup>1</sup> New registrations include vehicles manufactured in 2018 or 2017 only

<sup>2</sup> Lines temporarily closed are not included.

<sup>3</sup> Persons are recorded as killed who die at the scene of the accident or within 7 days; persons who die later are recorded as injured