

Transport Statistics Infocard

ISRAEL



• Area: 22,145 km² • Inhabitants: 8,883,800 (2018)

Contracting Party to 8 UN Transport Conventions (of which 2 UN Road Safety Conventions) under the purview of UNECE Inland Transport Committee.

Road and rail statistics

| | |
|--|-------|
| Number of passenger cars (thousand), 2012 | 2,269 |
| Motorization rate (No. of passenger cars per thousand inhabitants), 2012 | 287 |
| New registrations of alternative fuel passenger cars (% of total) | .. |
| Length of railway lines (km), 2016 | 1,340 |

Road casualty statistics

| | |
|------------------|--------|
| Fatalities, 2018 | 316 |
| Injured, 2018 | 22,703 |

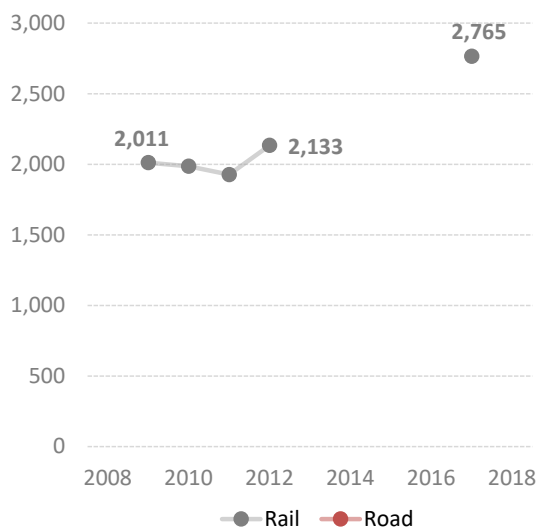
Road deaths per

| | |
|------------------------------|----|
| Million inhabitants, 2018 | 36 |
| 100,000 passenger cars, 2012 | 13 |

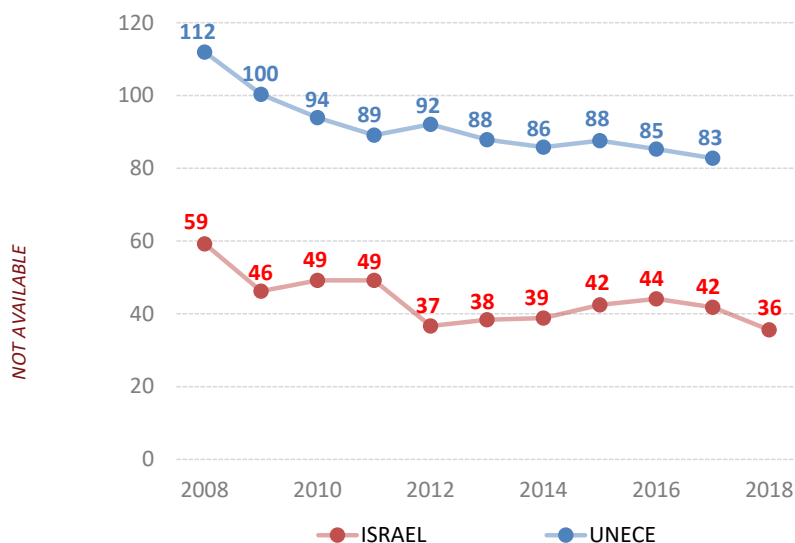
Vulnerable road users (% of total deaths)

| | |
|-------------------------------|------|
| Pedestrian and cyclists, 2018 | 36.1 |
| Motorcyclists, 2018 | 13.0 |

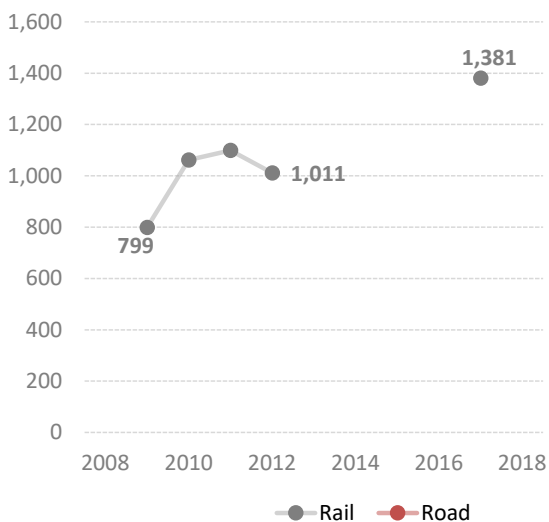
Passenger-km by mode (million) and modal share (%)



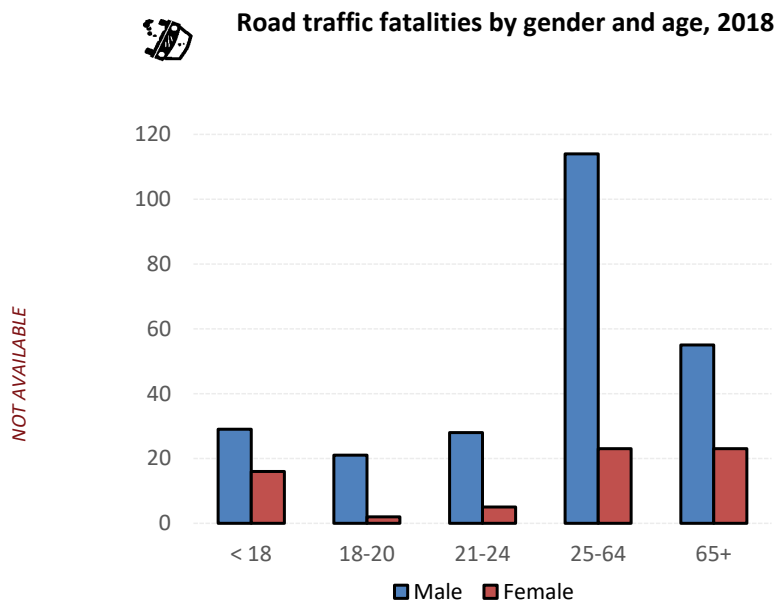
Road fatalities per million inhabitants



Tonne-km by mode (million) and modal share (%)



Road traffic fatalities by gender and age, 2018



Source: UNECE Transport Statistics Database.

Note: For road safety graphics, UNECE refers to the average value of ECE member States. IWW = inland waterways. Alternative fuel refers to fuel types other than petrol, diesel or hybrids.

- Not applicable / .. Not available.