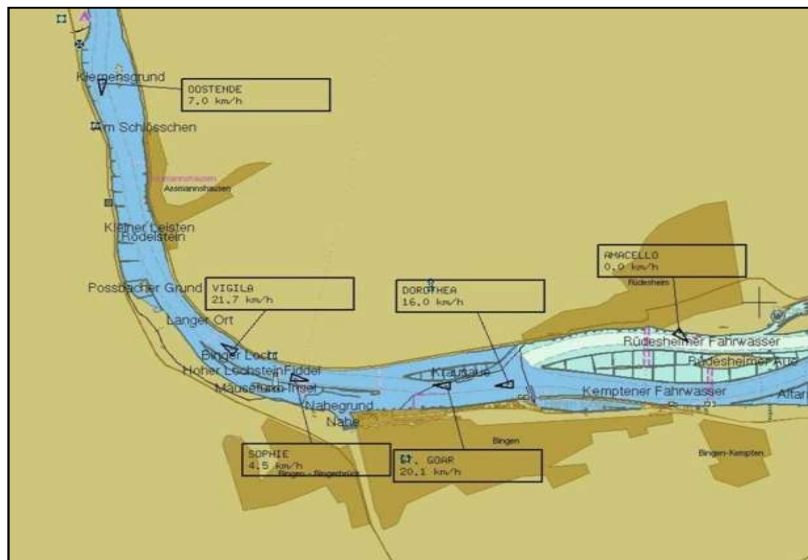
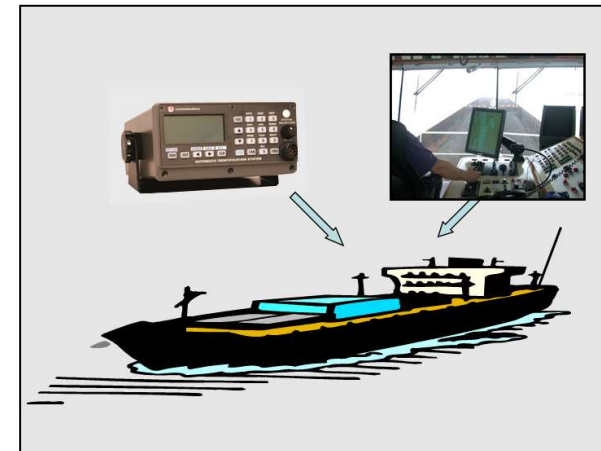
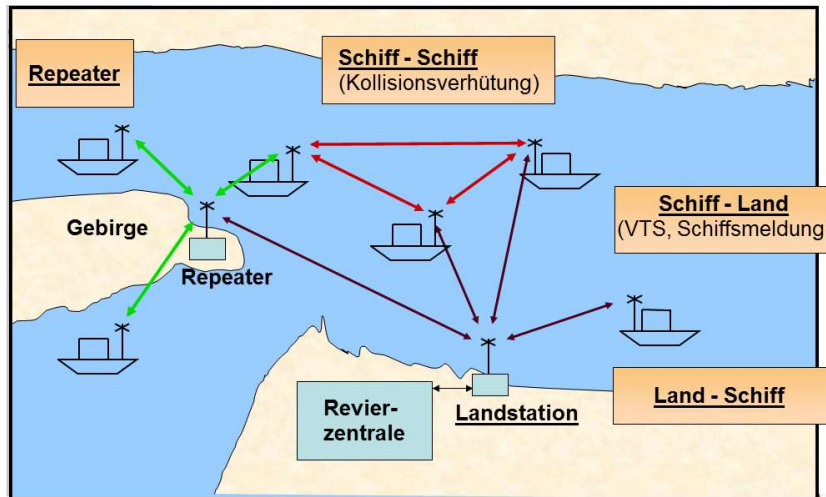


# **VTT Expert Group**

Update of VTT standard  
UNECE Resolution No. 63

13-02-2020



## REGULATIONS

### COMMISSION IMPLEMENTING REGULATION (EU) 2019/838

of 20 February 2019

on technical specifications for vessel tracking and tracing systems and repealing Regulation (EC) No 415/2007

THE EUROPEAN COMMISSION,

Having regard to the Treaty on the Functioning of the European Union,

Having regard to Directive 2005/44/EC of the European Parliament and of the Council of 7 September 2005 on harmonised river information services (RIS) on inland waterways in the Community <sup>(1)</sup>, and in particular Article 5(1)(d), thereof,

Whereas:

*Publication in Official Journal of the European Union on 24. May 2019  
It shall apply from 13 June 2020*

### **Previous EU VTT Standards**

- Commission Regulation (EC) No 415/2007 of 13 March 2007
- Commission Implementing Regulation (EU) No 689/2012 of 27 July 2012 amending Regulation (EC) No 415/2007

### **Actual UNECE VTT Standard**

- Resolution No. 63 International Standard for Tracking and Tracing on Inland Waterways (VTT)

### **Actual CCNR VTT Standards**

- Standard für Schiffsverfolgung und Aufspürung in der Binnenschifffahrt, Edition 1.2; 23.4.2013
- CESNI Test Standard Inland AIS, Edition 2017/2.0

## **Aim**

- Streamlining of EU VTT Standard
- Focus on technical definition of Inland AIS mobile station
- Include only functions which are implemented into Inland AIS mobile station

## **Approach**

- Update definitions and references: chapter 1
- Ease/shorten the general requirements: chapter 2
- Keep technical requirements unchanged: chapter 3
- Add technical requirements for AIS Class B: chapter 4
- Add technical requirements for Inland AIS AtoN: chapter 5
- Update Appendix C - Inland vessel and convoy types

### Consequences

- For general requirements on VTT refer to other RIS related documents e.g. EU RIS Directive or RIS Guidelines

### Inland AIS mobile station

- Technical functionality of Inland AIS mobile station remains unchanged
- ASM integrated into Inland AIS mobile station:
  - Inland ship static and voyage related data
  - Inland person on board
- Inland AIS Test standard remains unchanged
- Type approval remains valid

### Consequences

ASM external / not integrated into Inland AIS mobile station

- ASM ETA/RTA, water level, EMMA warning, signal status are moved to:
  - > Inventory for harmonised Inland ASM in Europe
- New ASM will be included in the for harmonised Inland ASM in Europe

AIS Aids to Navigation (AIS AtoN) report in Inland navigation

- List of Inland Aids to Navigation (AtoN) codes for use in AIS Message 21

---

### **Harmonised Inland Application Specific Message (ASM) in European Inland navigation:**

- Water levels message
- ETA/RTA
- Vertical bridge clearance message
- Signal lights message
- Maritime Geographic Notice message
- Text Message with ISRS code
- Convoy message
- Control message
- ASM capability request
- ASM capability response



Application Specific Message

Vertical bridge clearance



Country	Waterway	Kilometer	Bridge	Bridge clearance	Accuracy	Measurement time	Older than 12 h
AT	Donau	2001.5	Eisenbahnbrücke Krems	12 m	0.31	24.05.2019 03:24:00	Yes
AT	Donau	2119.4	Schleusenbrücke Abwinden-A...	1 m	0.2	24.05.2019 03:24:00	Yes
DE	Elbe	453.9	Eisenbahnbrücke Wittenberge	4 m	0.2	24.05.2019 03:24:00	Yes

ASM

Signal station



### AIS Aids to Navigation Report Message (AIS AtoN)

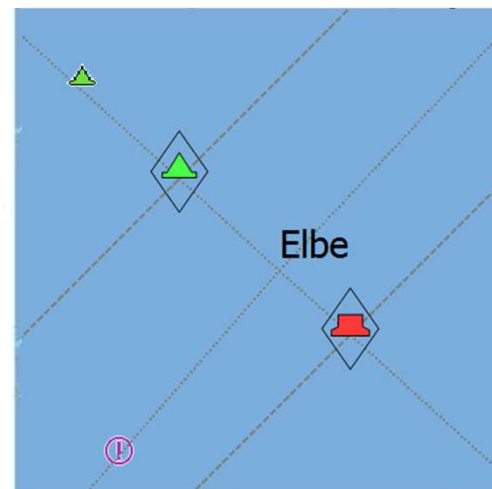
Inland AtoN Codes for Use in AIS Message 21

#### Physical AtoN

e.g. AIS AtoN station mounted on a bouy

#### Virtual AtoN

e.g. AIS base station transmitting an AtoN message on behalf of a bouy



physical AtoN



virtual AtoN

**Update UNECE Resolution No. 63**

**International Standard for Vessel Tracking and Tracing  
on Inland Waterways (VTT Standard)**

Update the Resolution

- Amendments to Resolution 63
- Additions to Resolution 63

**Update of AIS Test Standards at CESNI/ES-TRIN**

**Publish Inventory for European ASM**

**Publish Table of additional Inland AIS AtoN types**

A photograph of a sunset over a large body of water, likely a lake. The sun is low on the horizon, creating a bright reflection on the water. In the foreground, a dark, wooden pier or dock extends into the water. The background shows a hazy landscape with trees and a distant building with a spire.

**Thank you for your attention**

Stefan Bober

E-Mail: [Stefan.Bober@wsv.bund.de](mailto:Stefan.Bober@wsv.bund.de)