

**Committee of Experts on the Transport of Dangerous Goods
and on the Globally Harmonized System of Classification
and Labelling of Chemicals**

24 June 2016

Sub-Committee of Experts on the Transport of Dangerous Goods

Forty-ninth session

Geneva, 27 June – 6 July 2016

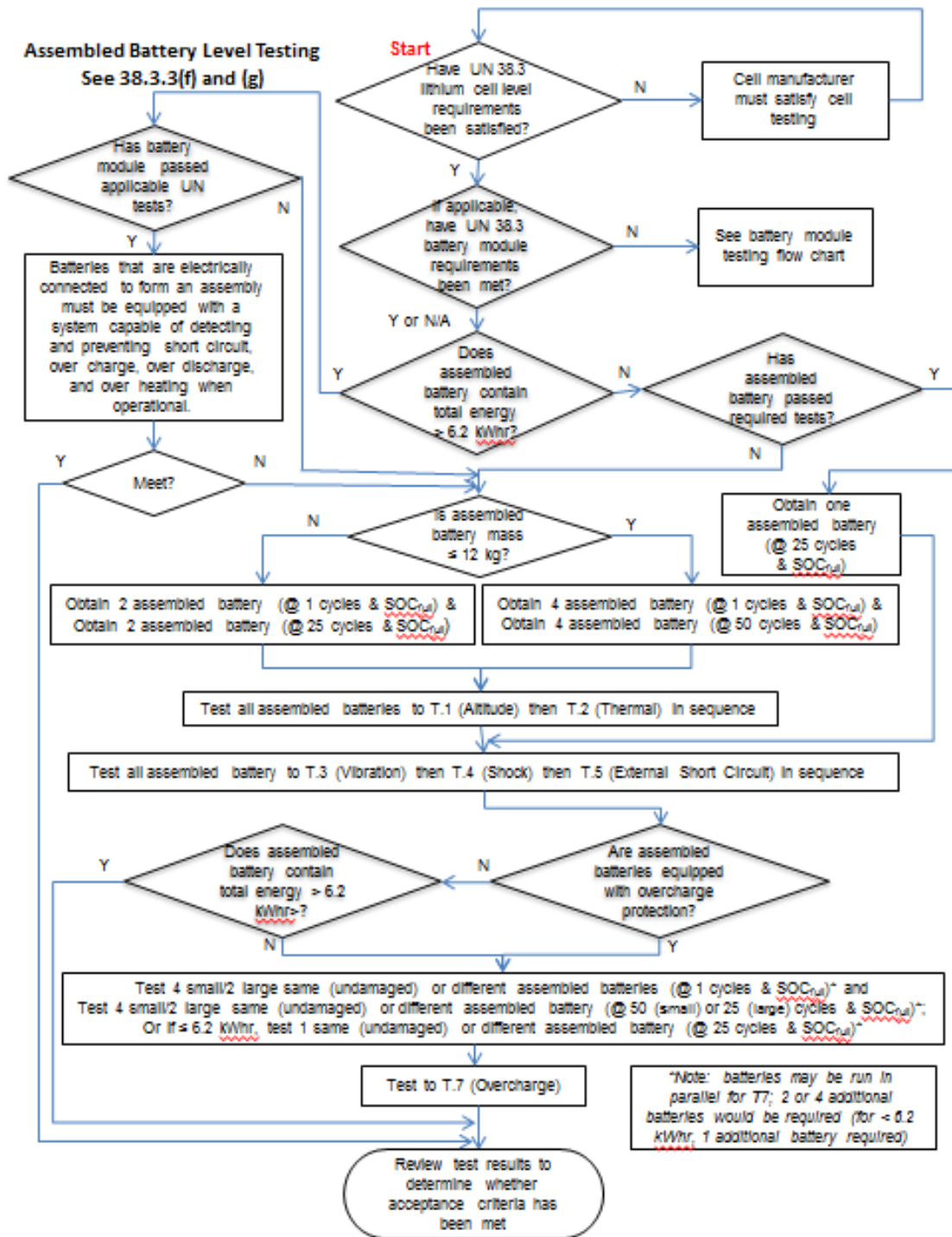
Item 4 (a) of the provisional agenda

Electric storage systems: testing of lithium batteries

**Flow Charts for Testing Lithium Batteries in Accordance
with Section 38.3 of UN Manual of Tests and Criteria**

**Transmitted by PRBA – The Rechargeable Battery Association and
RECHARGE**

1. During the lithium battery informal working group meeting in Bordeaux, it was generally agreed that incorporating flow charts into Section 38.3 of the UN Manual of Tests and Criteria that show testing requirements for lithium cells and batteries would be beneficial.
2. PRBA and RECHARGE are providing two examples of lithium battery flow charts. We welcome comments from members of the Sub-Committee on the idea of incorporating flow charts into Section 38.3 of the UN Manual of Tests and Criteria.



Testing for Battery Module
used in Assembled Battery.
See 38.3.3(f) and (g)

