



## International Coordination of Works

TER Meeting, Istanbul, 29.4.2015

# RailNetEurope (RNE) Introduction



*RNE Members Network*

## RailNetEurope

- was established in 2004
- currently has **35** Members
- is an umbrella organisation of Infrastructure Managers (IMs)/Allocation Bodies (ABs)
- enhances international rail traffic
- delivers solutions and tools for international infrastructure management
- provides information on the European railway infrastructure
- RNE provided support to the IMs concerned from the beginning and is now the coordination platform of the RFCs as regards operational business

# Rail Freight Corridors (RFCs)

The Regulation concerning a European Rail Network for Competitive Freight (Rail Freight Regulation 913/2010) entered into force on 9 November 2010. This Regulation requests Member States to establish international market-oriented Rail Freight Corridors (RFCs) to meet three main challenges:

- strengthening co-operation between Infrastructure Managers on key aspects such as allocation of paths, deployment of interoperable systems and infrastructure development
- finding the right balance between freight and passenger traffic along the Rail Freight Corridors, giving adequate capacity for freight in line with market needs and ensuring that common punctuality targets for freight trains are met
- promoting intermodality between rail and other transport modes by integrating terminals into the corridor management process

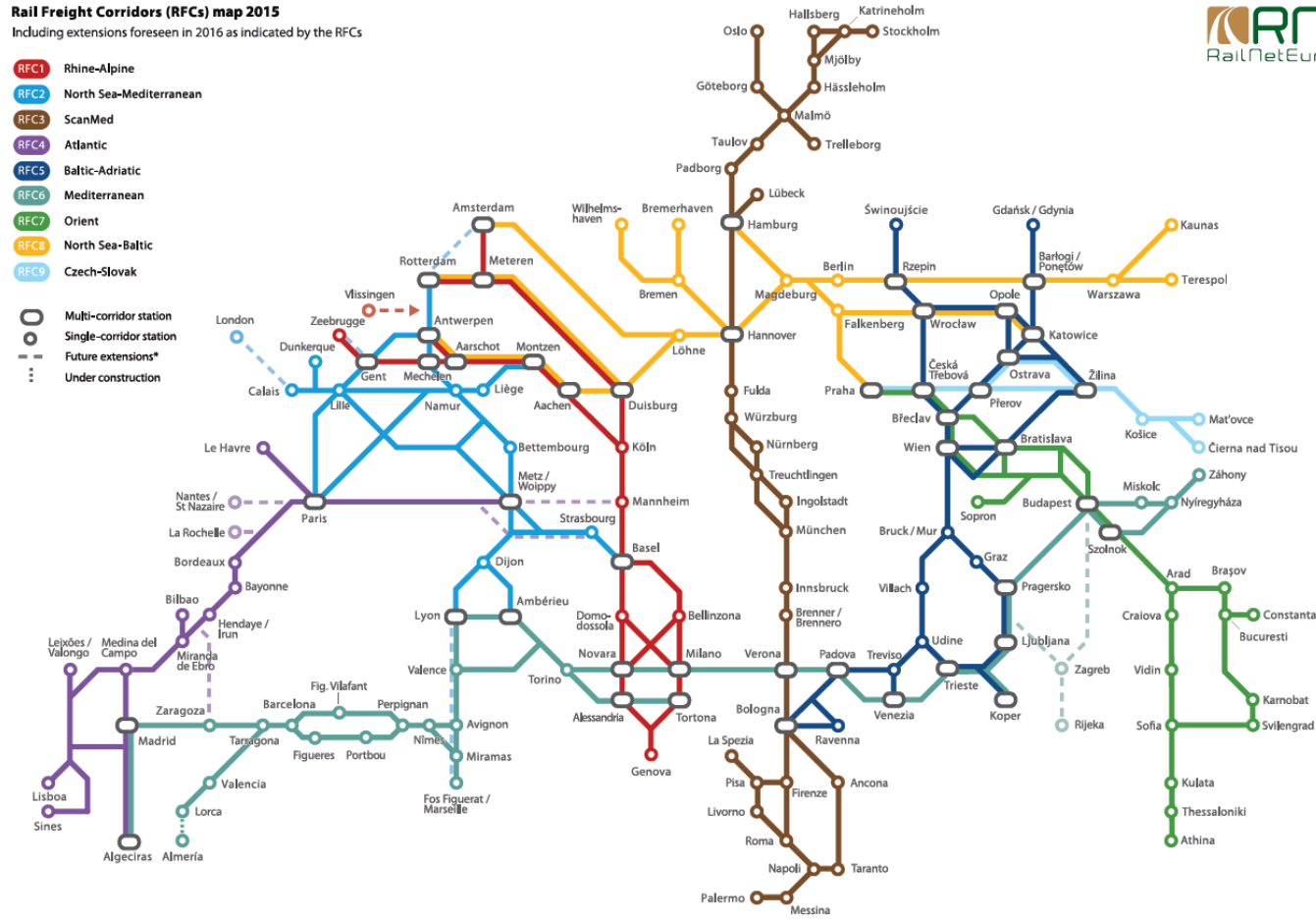
# Rail Freight Corridors Map

## Rail Freight Corridors (RFCs) map 2015

Including extensions foreseen in 2016 as indicated by the RFCs

- RFC1 Rhine-Alpine
- RFC2 North Sea-Mediterranean
- RFC3 ScanMed
- RFC4 Atlantic
- RFC5 Baltic-Adriatic
- RFC6 Mediterranean
- RFC7 Orient
- RFC8 North Sea-Baltic
- RFC9 Czech-Slovak

- Multi-corridor station
- Single-corridor station
- - - Future extensions\*
- ⋮ Under construction



\*This map does not include all potential RFC routes' extensions contained within Annex 2 of EU Reg. 1316/2013 (extensions are subject to market studies). For further details, please refer to the individual RFCs' websites.

©2015 RNE

# REGULATION (EU) No 913/2010 OF THE EUROPEAN PARLIAMENT AND OF THE COUNCIL of 22 September 2010 concerning a European rail network for competitive freight

(16) In order to guarantee the consistency and continuity of the infrastructure capacities available along the freight corridor, investment in the freight corridor should be coordinated between Member States and the infrastructure managers concerned, as well as, where appropriate, between Member States and European third countries, and planned in a way which meets, subject to economic viability, the needs of the freight corridor. The schedule for carrying out the investment should be published to ensure that applicants who may operate in the corridor are well informed. The investment should include projects relating to the development of interoperable systems and the increase in capacity of the trains.

(17) For the same reasons, all the works on infrastructure and its equipment that would restrict available capacity on the freight corridor should also be coordinated at the level of the freight corridor and be the subject of updated publications.

# International Coordination of Works and Possessions (ICoW)

## Current situation

Currently the processes for planning infrastructure restrictions (i.e. works and possessions – “ICoW”) vary widely among European Infrastructure Managers

National processes and standards for track and operations planning are very different

Guidelines harmonising international processes for planned temporary infrastructure possessions for RFCs do exist, but only provide a framework, leaving many details to the discretion of the IMs. Activities on different RFCs are not really harmonised

Too many meetings with increasing travel costs and resources are held across Europe to coordinate the works among all RFCs

It is essential to establish a common process for coordinating and publishing planned temporary infrastructure possessions by European Infrastructure Managers

Various existing activities, mainly on a bilateral basis, have to be linked to the project to avoid work duplication

# International Coordination of Works and Possessions

## Project goals

- Revised guidelines concentrating on:
  - Harmonised, agreed process for IMs for international coordination of works and possessions
  - Agreed information management: timeline, contents and tools
  - Confirmed common meeting structure for RFCs concerning coordination of works
- Implementation, including monitoring and reporting

# International Coordination of Works and Possessions

## Expected results (deliverables)

- Revised guidelines for international coordination of works and possessions for RFCs
- Guidelines for international coordination of works and possessions for international main lines
- An efficient meeting structure (from spring 2016) to save resources, travel time and travel costs
- Established monitoring of the revised process
- To fulfill the agreed requirements of the RUs concerning information about works
- To avoid unnecessary parallel work (work duplication)
- To secure better services for the RUs and minimise the impact on traffic



# International Coordination of Works and Possessions Activities

## Activities

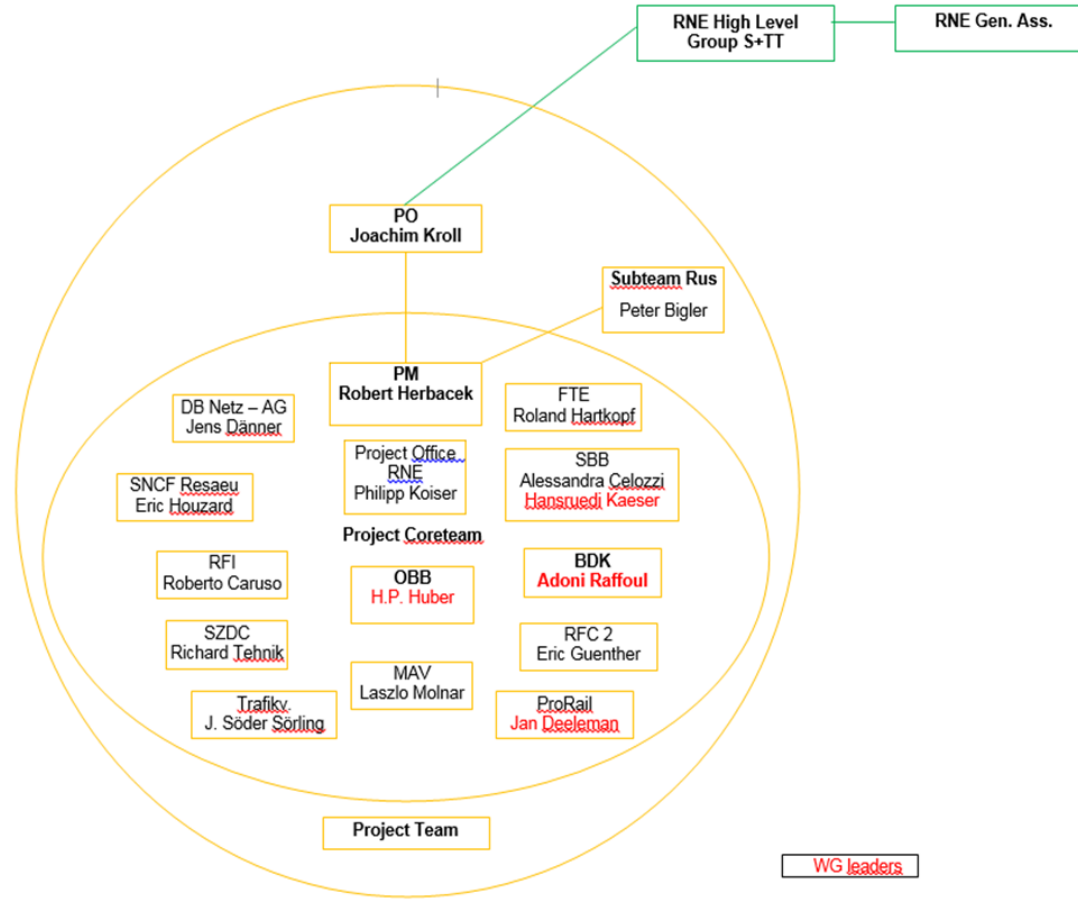
- Analysis of current situation
- Definition of criteria for relevant works and possessions
- Harmonising of documents and presentations
- Evaluation of the RFC Guidelines
- Creating a timeline for publishing information about works and possessions
- Definition of a new meeting structure
- Pilot for coordination meetings for all corridors

# International Coordination of Works and Possessions

## Project schedule

Start:	December 2014	Project assignment (General Assembly - GA)
	February 2015	Kick-off meeting
	May 2015	Meeting of RFCs 1, 2, 3, 5 and 8
	November 2015	Draft guidelines ICoW created
	December 2015	Agreement on revised guidelines by GA
	June 2016	First international conference for ICoW
	November 2016	Second international conference for ICoW
End:	December 2016	Final report to GA

# ICoW Project Organisation



# Object Breakdown Structure

defined work packages							
	R. Herbacek	Time Table					
	R. Hartkopf	RFC					R. Kaeser
	P. Koiser	RNE					R. Caruso
	J. Deeleman	Rus/AA	Context &			What	Content
	A. Celozzi	IMs	Requirements			When	Method
	B. Marenghi	Projects	WP 5		Information &	How	Evaluation
		Terminals			Publishing	Who	IT-Solution
		UIC Leaflet 451.2			WP 4	Where	Responsibility
		PaPs					
		NS					
Inputs							Analysis
Methods							Weakness
Solutions						Guideline ICOW	Proposal
Comparison	IT for Information		International Coordination			WP 2	Draft version
Costs	WP 1		of works				
Implementation	Adoni Raffoul						
Interfaces	H.P. Huber						
	J. Söder Sörling					Timeline	
	J. Dänner					Meetings	
						National Standards	H.P Huber
	Plenary meeting				Process	Information's	R. Herbacek
	committed draft version				for ICow	Coordination	J. Dänner
	presentation to PO		Agreement of		Future Meeting	Participants	R. Hartkopf
	presentation to RNE-GA		Draft Guideline		Structure ICOW	Organisation	A. Celozzi
			WP 6		WP 3	Responsibility	B. Marenghi
			R. Herbacek			Location	R. Tehnik
			P. Koiser			Participants	

# Possible Rail Freight Corridor (RFC) 10



# Information about works and possessions

## ■ ÖBB track and operation planning 2016

IM	corridor section	line	line	reason for restriction	operational measure	"added value"	start date (MM/YY)	end date (DD/MM/YY)	effects on path / train		
		from	to						A	B	C
DB Netze											
ÖBB Infra	Salzburg - Villach	Golling-Abtenau	Golling-Abtenau	Track renewal	Single Track Operation		09.09.2016	14.09.2016		X	
		Pfarrwerfen	Bischofshofen	Bridge renewal	Single Track Operation		08.08.2016	13.08.2016		X	
		Pfarrwerfen	Bischofshofen	Bridge renewal	Single Track Operation		15.08.2016	20.08.2016		X	
		Bischofshofen Fbf.	Üst Bo 2	Platform renewal	Single Track Operation		27.06.2016	16.07.2016		X	
		Schwarzach-St.Veit	Schwarzach-St.Veit	Bridge renewal	Single Track Operation		11.01.2016	08.05.2016		X	
		Schwarzach-St.Veit	Böckstein		Total closure		Sa. 09.04.2016	Mo. 11.04.2016			X
		Schwarzach-St.Veit	Böckstein		Total closure		Sa. 08.10.2016	Mo. 10.10.2016			X
		Rothenthurn		Station track renewal	Single Track Operation		16.08.2016	03.09.2016		X	
		Rothenthurn	Paternion-Feistritz	Track renewal	Single Track Operation		26.09.2016	15.10.2016		X	
	Villach - Ljubljana	Villach Süd Gvbf-Ost	Ledenitzen	Catenary	Total closure		Mo. 14.11.2016	Sa. 25.11.2016			X