

# CARE database



**Maria Teresa Sanz Villegas**  
**European Commission**

6/7/2011

# CARE database

## 1. Background

## 2. Process & data

## 3. Security

## 4. CaDAS

## 5. Europa site

# CARE database

- **towards a common tool for a better monitoring of road accidents**
- **Council Decision 93/704/EC on the creation of a Community database on road accidents.**



# CARE database

## Objectives

- **identify and quantify road safety problems**
- **evaluate the efficiency of road safety measures**
- **determine the relevance of Community actions**
- **facilitate the exchange of experience in this field**

# CARE database

## History

- **1988 - 1993** : feasibility study for the creation of a desegregate road accident database (CARE)
- **1993 - 1996** : pilot operation of the CARE database.
- **1996 -1999** : harmonisation of the data contained inside the database allowing for international comparisons and exchange of experience.
- **1999 - 2008** : full operation of the system. Production of detailed multi-dimension reports
- **2009 – today** : New model of data CaDAS



# CARE database

## European Commission services

- **DG MOVE** as far as road safety issues are concerned
- **Eurostat** for statistics issues
- **DI** for informatics issues

# CARE database

1. Background

**2. Process & data**

3. Security

4. CaDAS

5. Europa site

# CARE database

## process

- national data ( Member States )
- data collection
- Uploading
- Transformation rules
- Common variables creation
- Verification with national publications



# CARE database

## Data structure

- **Basic definitions**
  - ◆ Accident
  - ◆ Person killed, injured ...
- **Common variables**
  - ◆ 1st study - 17 variables ( on production )
  - ◆ 2nd study - 43 variables ( on production )
  - ◆ 3rd study - socio-economics variables ( working ...)

# CARE database

## 17 Common Variables ( 1st study )

- ◆ Country
- ◆ Time ( year, month, hour )
- ◆ Age group
- ◆ Gender
- ◆ Person class ( driver, passenger , pedestrian )
- ◆ Area type ( inside or outside urban )
- ◆ Motorway
- ◆ Junction type
- ◆ Vehicle
- ◆ Weather conditions
- ◆ Lighting
- ◆ ...

# CARE database

## 43 Common Variables ( 2nd study )

- ◆ Region
- ◆ Vehicle age
- ◆ Driving licence age
- ◆ Road surface condition
- ◆ Speed limit
- ◆ Alcohol test
- ◆ Psychophysical circumstances
- ◆ Junction control
- ◆ .....

# CARE database

1. Background

2. Structure & data

**3. Security**

4. CaDAS

5. Europa site



# CARE database

## access

- **Complete database (national administrations):**
  - 3 institutes by Member State**
    - ☞ **Statistical**
    - ☞ **Ministry of Transports**
    - ☞ **others**
- **Reports and statistics (Public access)**
  - Europa** ([http://ec.europa.eu/transport/roadsafety/road\\_safety\\_observatory/care\\_en.htm](http://ec.europa.eu/transport/roadsafety/road_safety_observatory/care_en.htm))



# CARE database

## National administrations access

- The user interface allows the production of multi-dimension aggregated reports in a standardised way, combining a wide range of information. The user can choose at the moment among data since 1991

# CARE database

## Data confidentiality and security

- reports produced by the system are always aggregated
- the MS are requested to black out confidential data fields before send data
- A CARE user must have a valid user/password
- All measures have been taken guarantee the confidentiality, security and integrity



# CARE database

**CaDAS :Common Accident Data Set's objective is to improve the compatibility of road accident data throughout Europe.**

**CARE database contains a large number of road accident variables**

*but*

**Disaggregate Variables, Values and Definitions :** data collection from the existing national databases ... no harmonization between countries

**Data in some cases not complete :** depends on each country

**Data files in different formats :** each country has its own format



# CARE database

## CaDAS model

- Standardised :

- collect of the maximum needs of **each country** to define a minimum set of standardised data elements for **all countries**
- **more** variables and values with a **common definition** in CADaS than in the **CARE database**

*but*

- Flexible :

- **specific requirements** from countries (questionnaire was developed and filled-in by representatives from almost all EU countries)
- countries can start with adopting the CADaS proposal in pieces ("**à la carte**" system)

*and*

- Easy to use :

- structured in a **simple way**, without levels of hierarchy
- **4 basic categories**: Accident, Road, Traffic unit Person



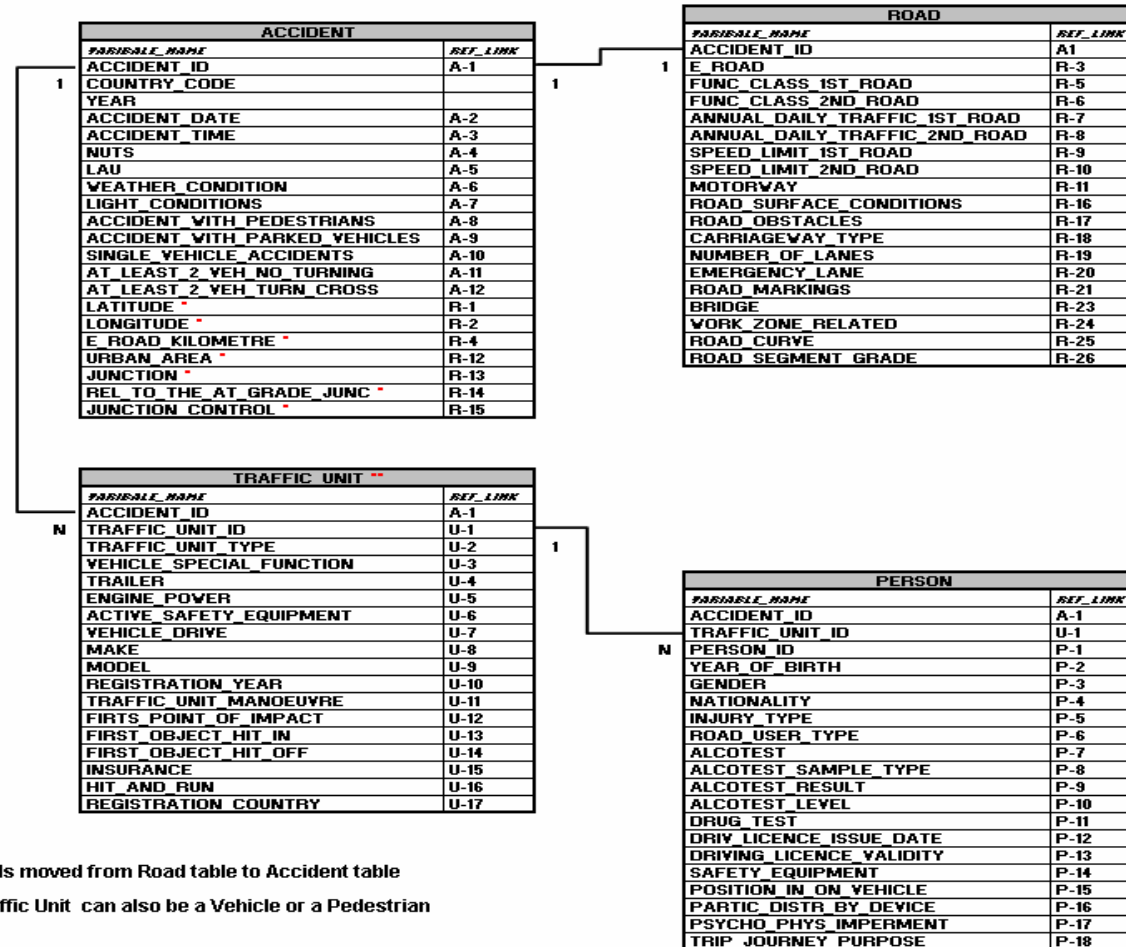
# CARE database

## CaDAS model : WHY ?

- **Better data quality** : each country is responsible of the Qualification and Validation of their own Data (no more transformation in the global data warehouse)
- **Better Analysis** : a common methodology to improve the compatibility of road accident data throughout Europe
- **Better time** of loading, analysing and publishing : common model, easier to load in the global data warehouse

# CARE database

- Cadas Model



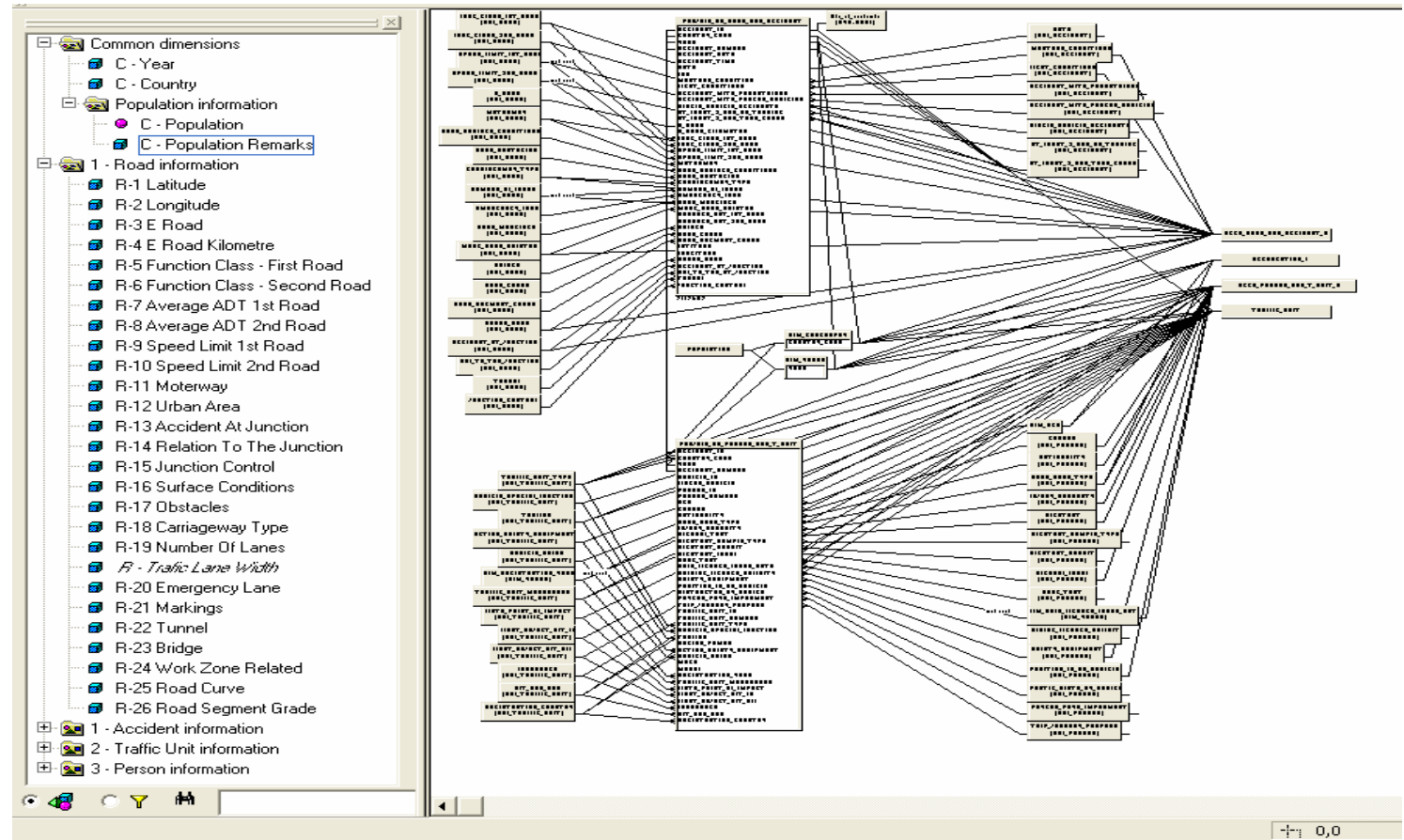
\*: Fileds moved from Road table to Accident table

\*\* : Traffic Unit can also be a Vehicle or a Pedestrian



# CARE database

- Cadas Universe



# CARE database

1. Background

2. Structure & data

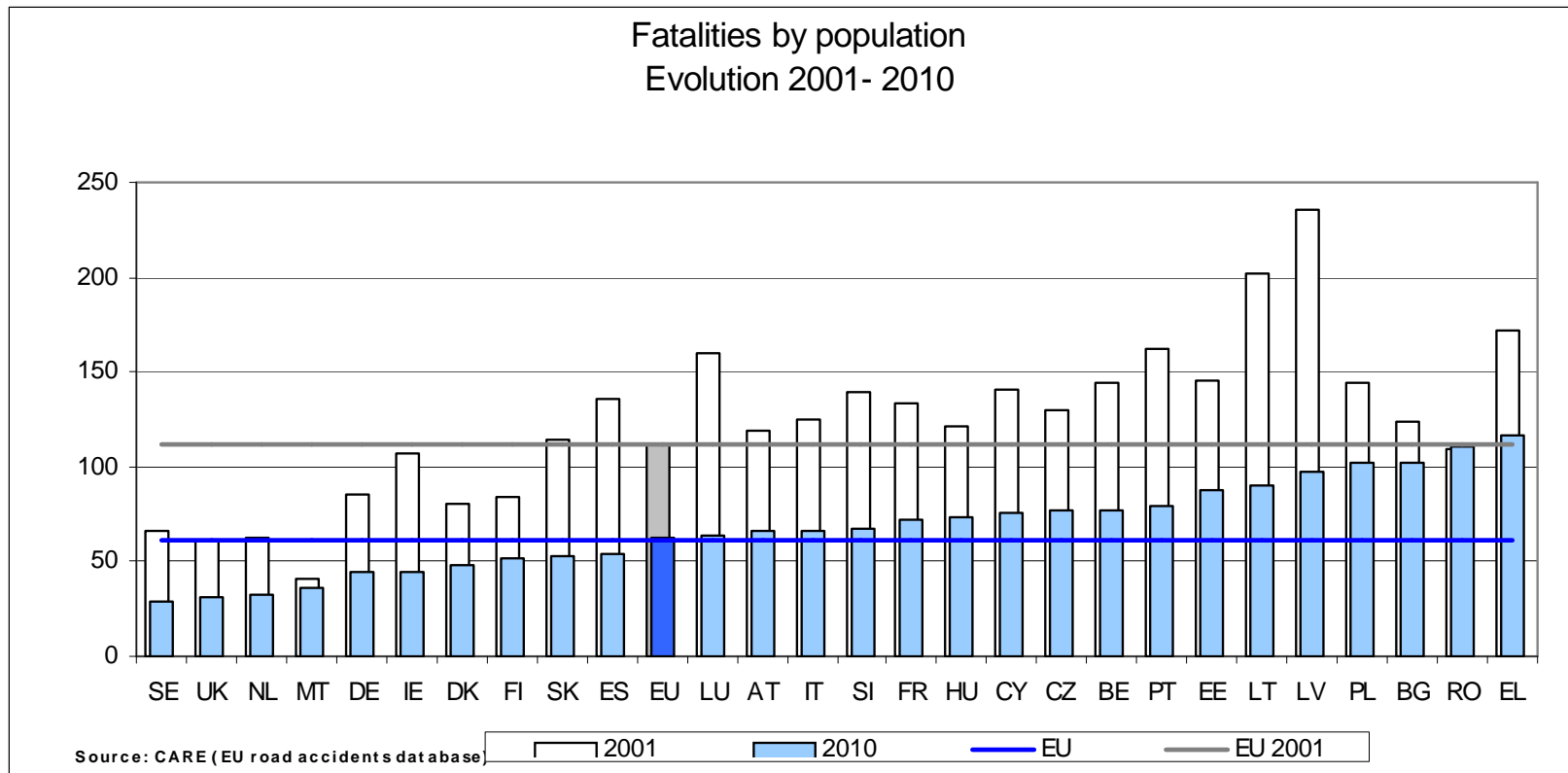
3. Security

4. CaDAS

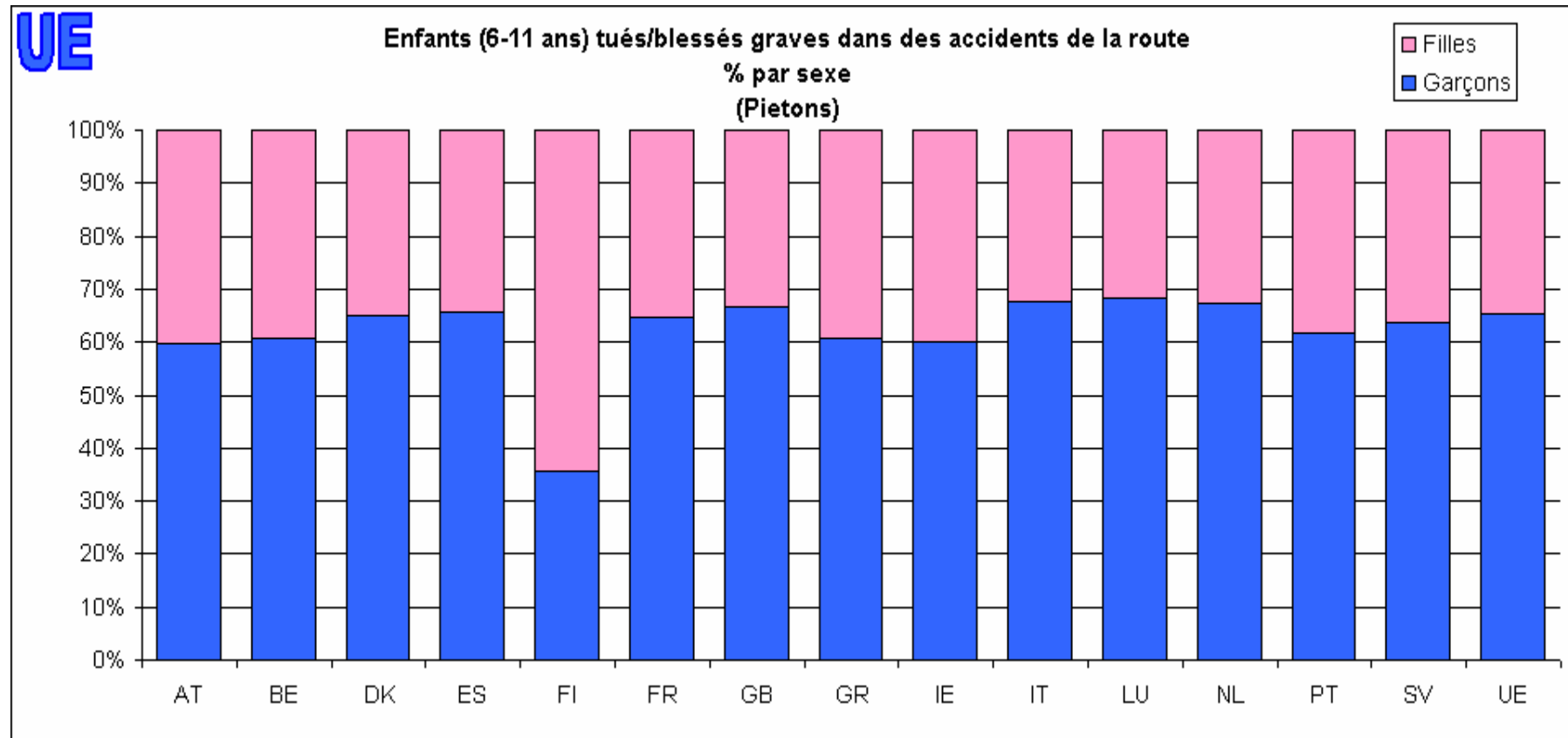
**5. Examples & Europa site**



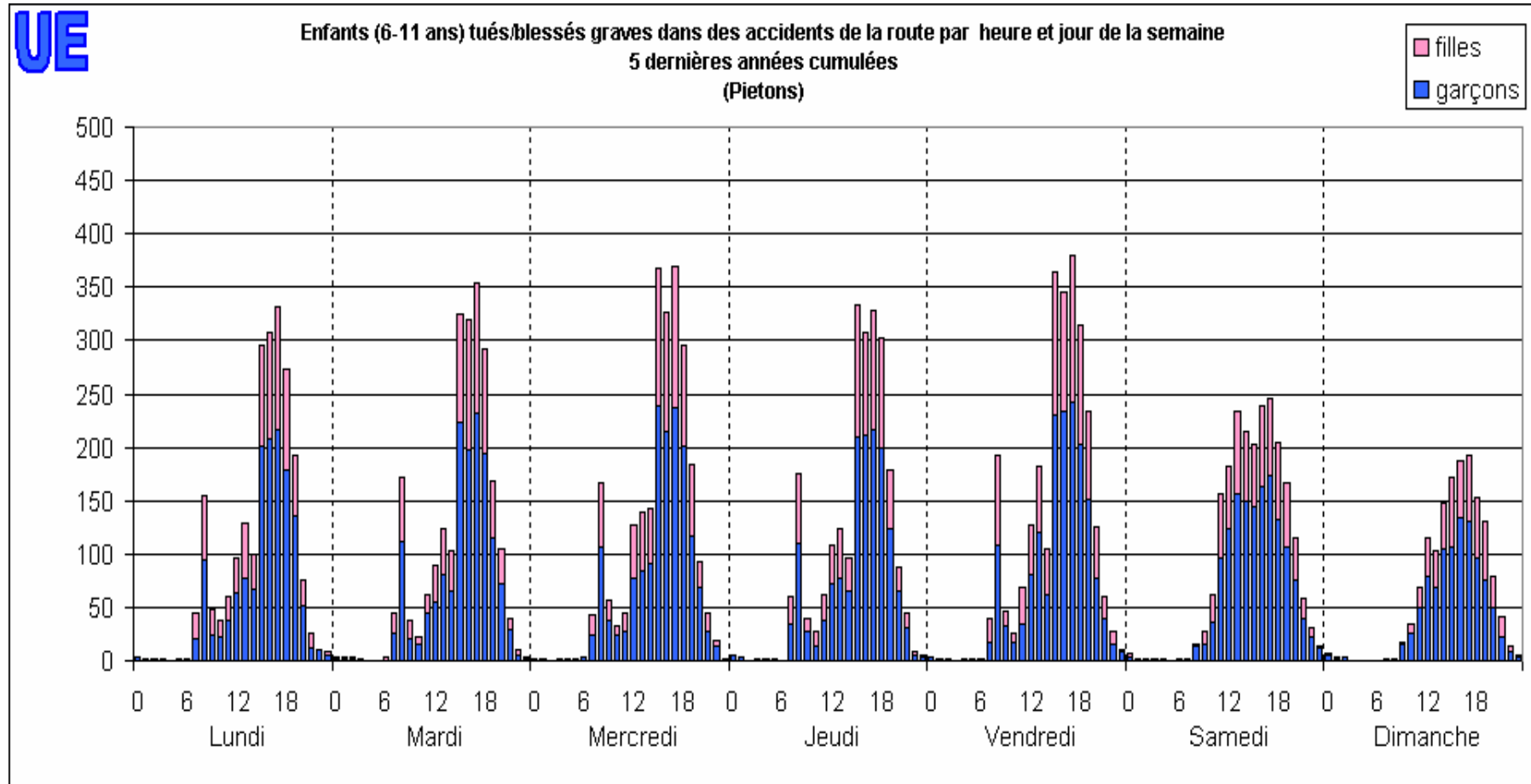
# CARE database



# CARE database

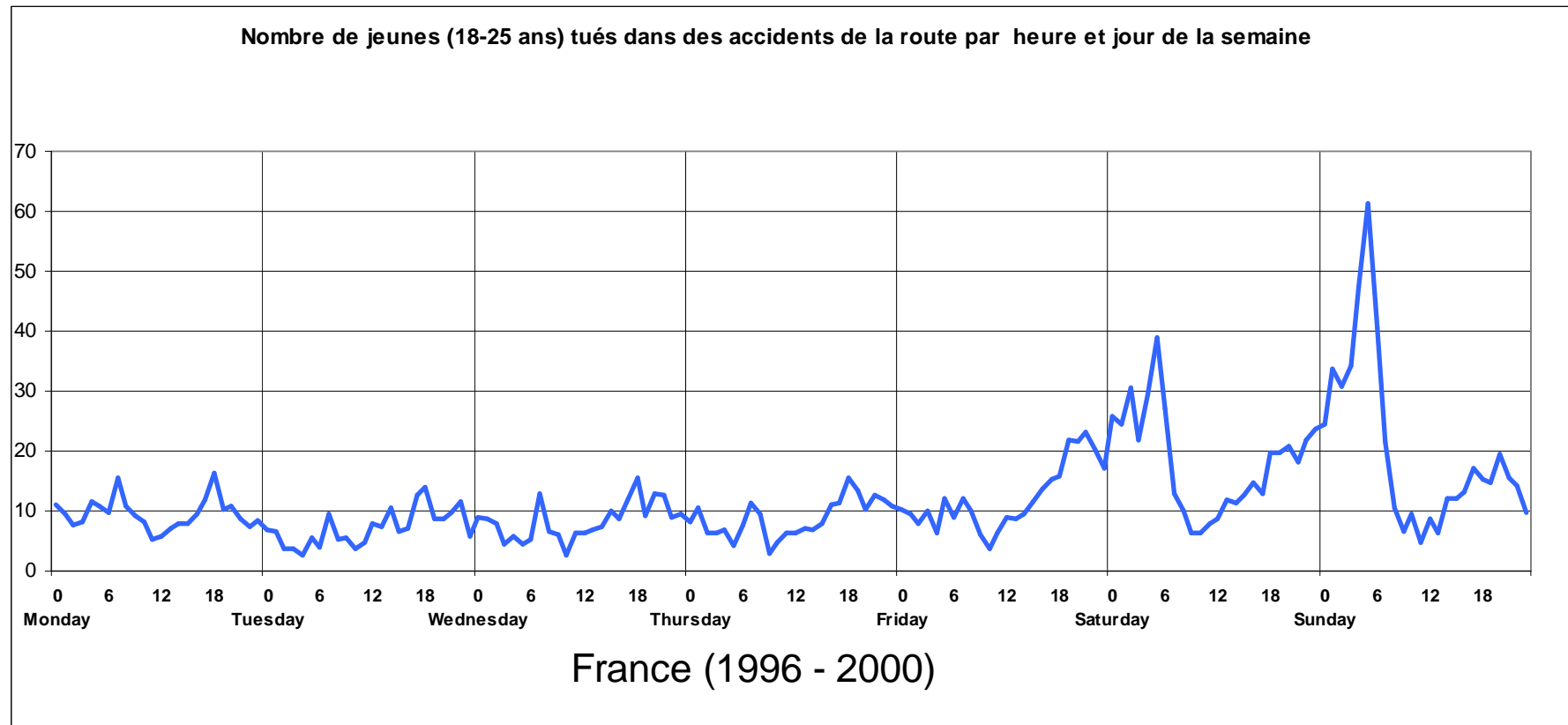


# CARE database

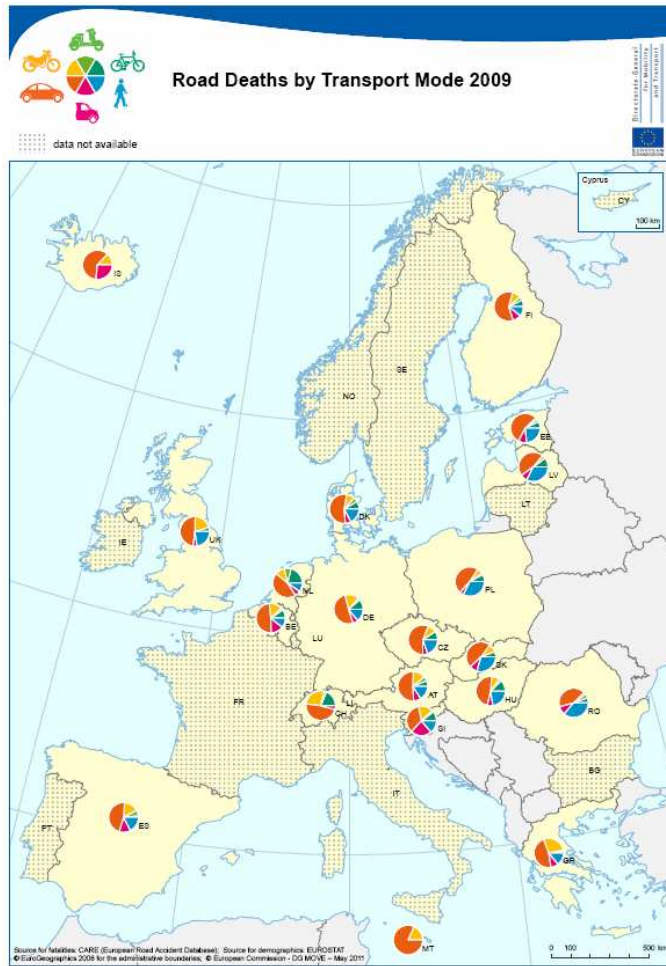




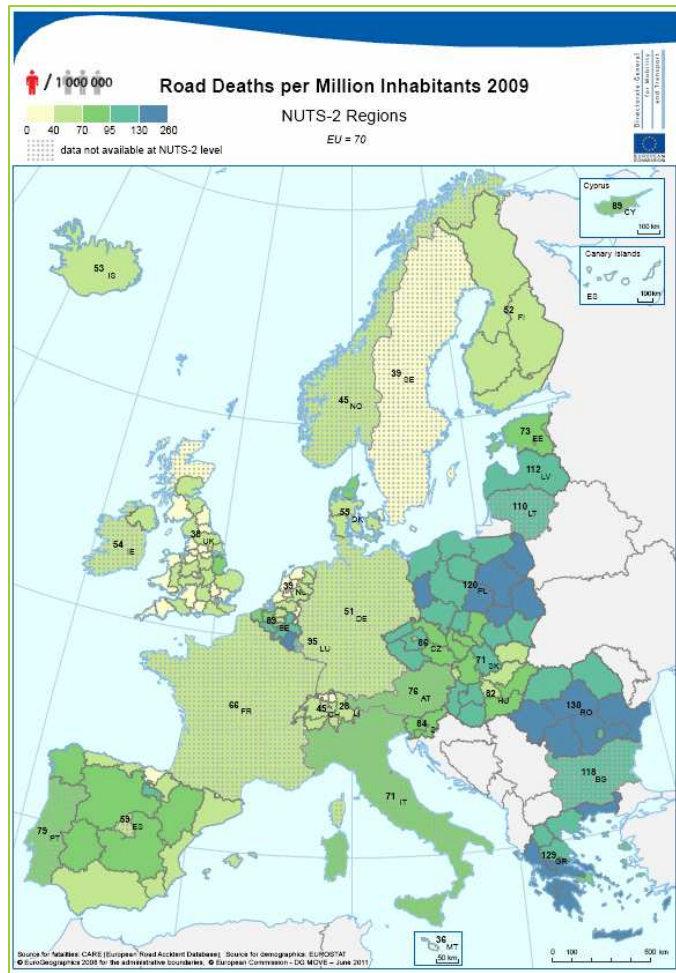
# CARE database



# CARE database



# CARE database



# CARE database

Public access : [http://ec.europa.eu/transport/road\\_safety/specialist/statistics/care\\_reports\\_graphics/index\\_en.htm](http://ec.europa.eu/transport/road_safety/specialist/statistics/care_reports_graphics/index_en.htm)

EU - Road safety - CARE database - reports and graphics - Windows Internet Explorer

http://ec.europa.eu/transport/road\_safety/specialist/statistics/care\_reports\_graphics/index\_en.htm

European Commission  
Road Safety

European Commission > Transport > Road Safety > ... > Care - reports and graphics

CARE database - reports and graphics

Road Safety evolution in the EU

[Road Safety evolution in the EU](#)  
[Road Safety evolution in the EU by population](#)  
[About the CARE database](#)

Summary table (source CARE)

	CARE - Road fatalities by country											
	By user		By gender		By transport mode		By age		By month		By transport mode (no cars)	
2009												
2008												
2007												
2006												
2005												
2004												
2003												
2002												
2001												

