



# **Presentation from Germany on compatibility (vehicle and CRS) of iSize and IsoFix**

23rd IG CRS meeting in Milano  
presented by Rudolf Gerlach

## **Vehicle IsoFix (non-iSize-ready) approved**

- Vehicle with all IsoFix positions non-iSize-ready
- Floor not approved for a Support-leg but fitted with TopTether anchorages

## **Vehicle iSize-ready**

- Vehicle with all IsoFix positions iSize-ready
- Support-leg approved, fitted with TopTether anchorages

Question: If two iSize-ready positions are available, is it possible to install both, iSize and IsoFix universal CRS together?

## **Vehicle with one iSize-ready seating position and one IsoFix (non-iSize-ready) seating position**

Combination of iSize-ready and IsoFix (non-iSize-ready) CRS necessary to fulfil the requirement to have two IsoFix positions in a vehicle with more than one seat row

Question: Is such a vehicle iSize-ready?

## **Non-iSize-ready CRS**

- Universal, non-iSize-ready, no support-leg, IsoFix anchorages and TopTether-strap
- Fixation on iSize-ready seating position possible und permitted (?\*) with TopTether-strap.

(?\*)It has to be clarified, if it is permitted to install an IsoFix (non-iSize-ready) CRS on a seating position approved and marked as iSize-ready

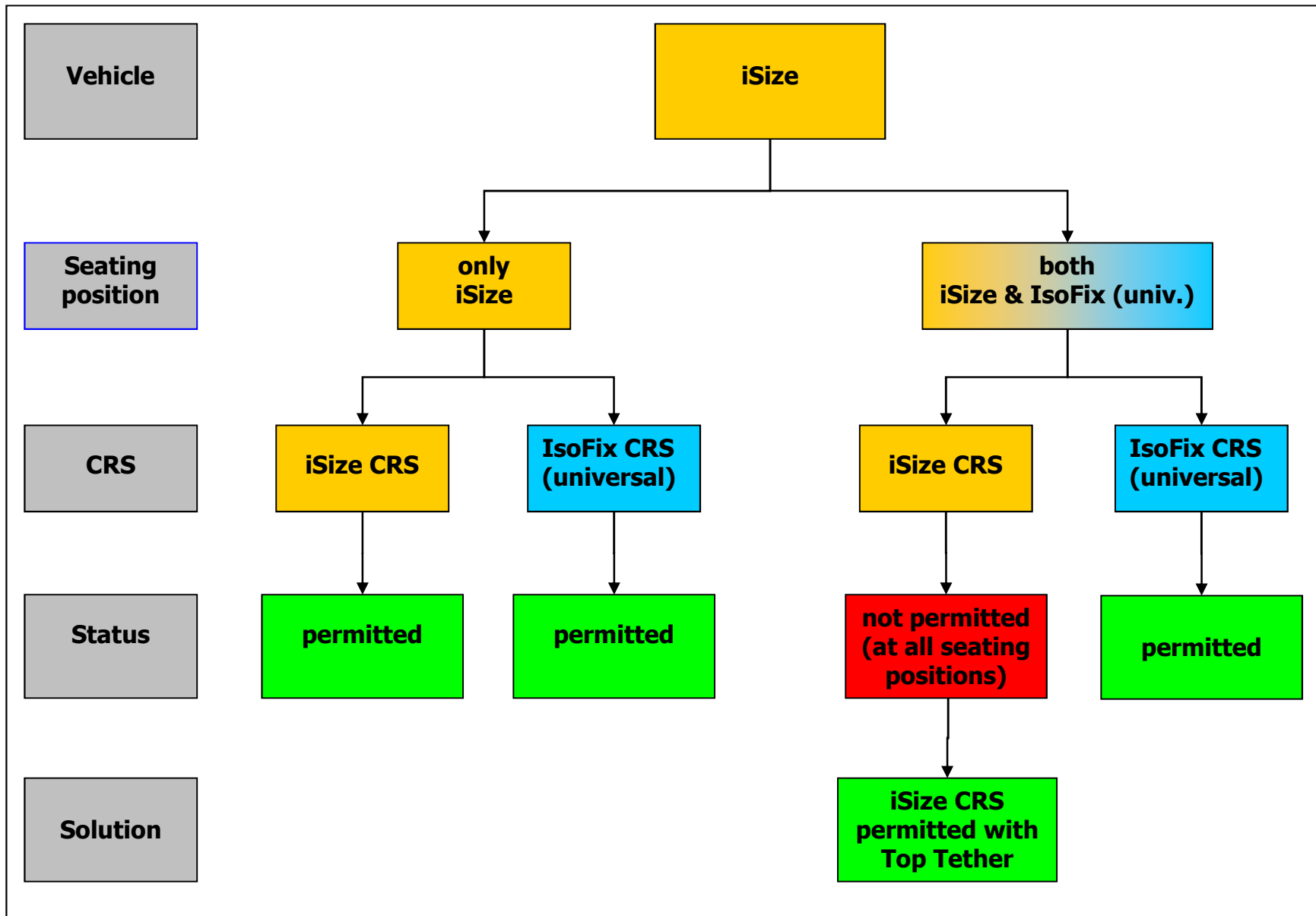
## **iSize-ready CRS**

- Universal, iSize-ready, Support-leg, IsoFix anchorages without TopTether-strap
- Fixation on a non-iSize-ready seating position possible but not permitted (no TopTether anchorage available and vehicle floor not approved for Support-leg)

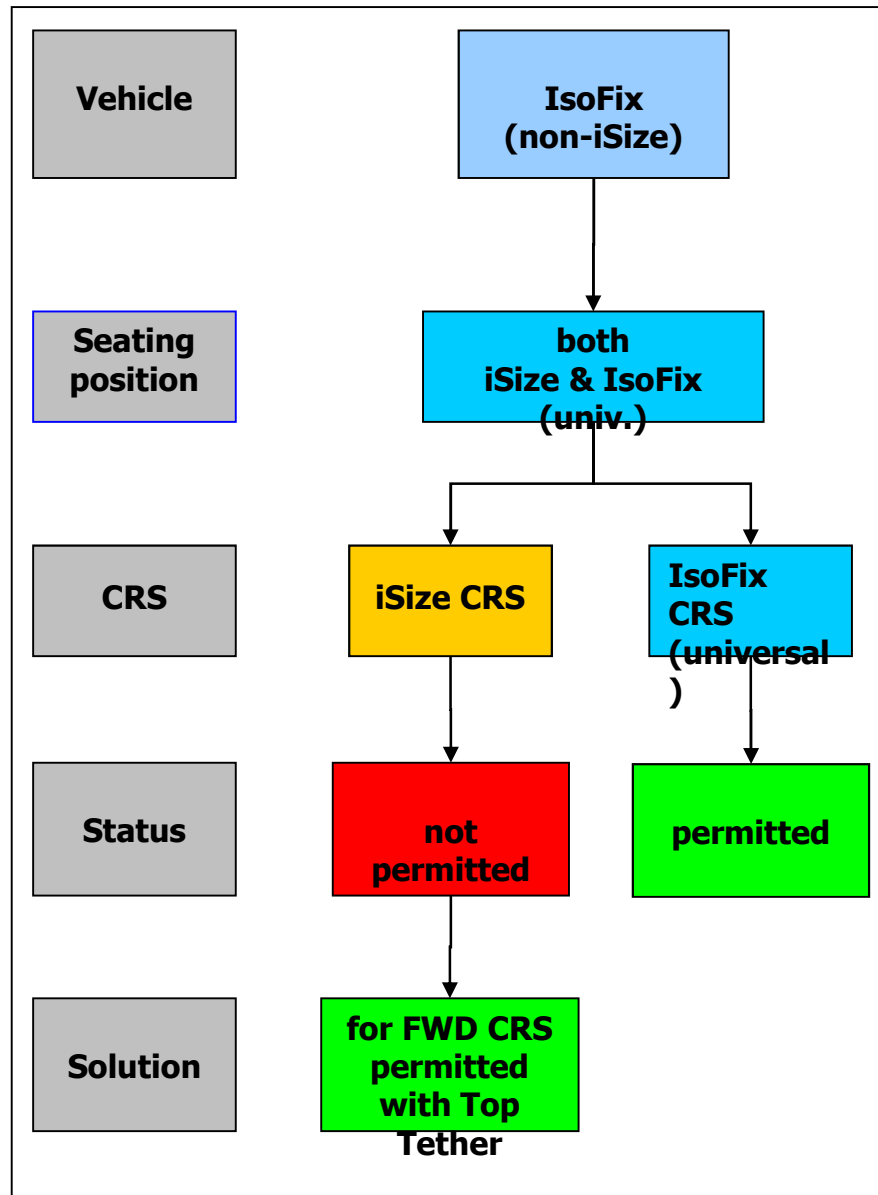
## **To prevent misuse we see two solutions:**

- All iSize-ready CRS shall be fitted with a TopTether-strap
- All vehicles with one iSize-ready-position and all other IsoFix positions ready for a Support-leg (black and white vehicles – customer has to check if the CRS fits in his car)

# All iSize CRS with top-tether and optional support-leg

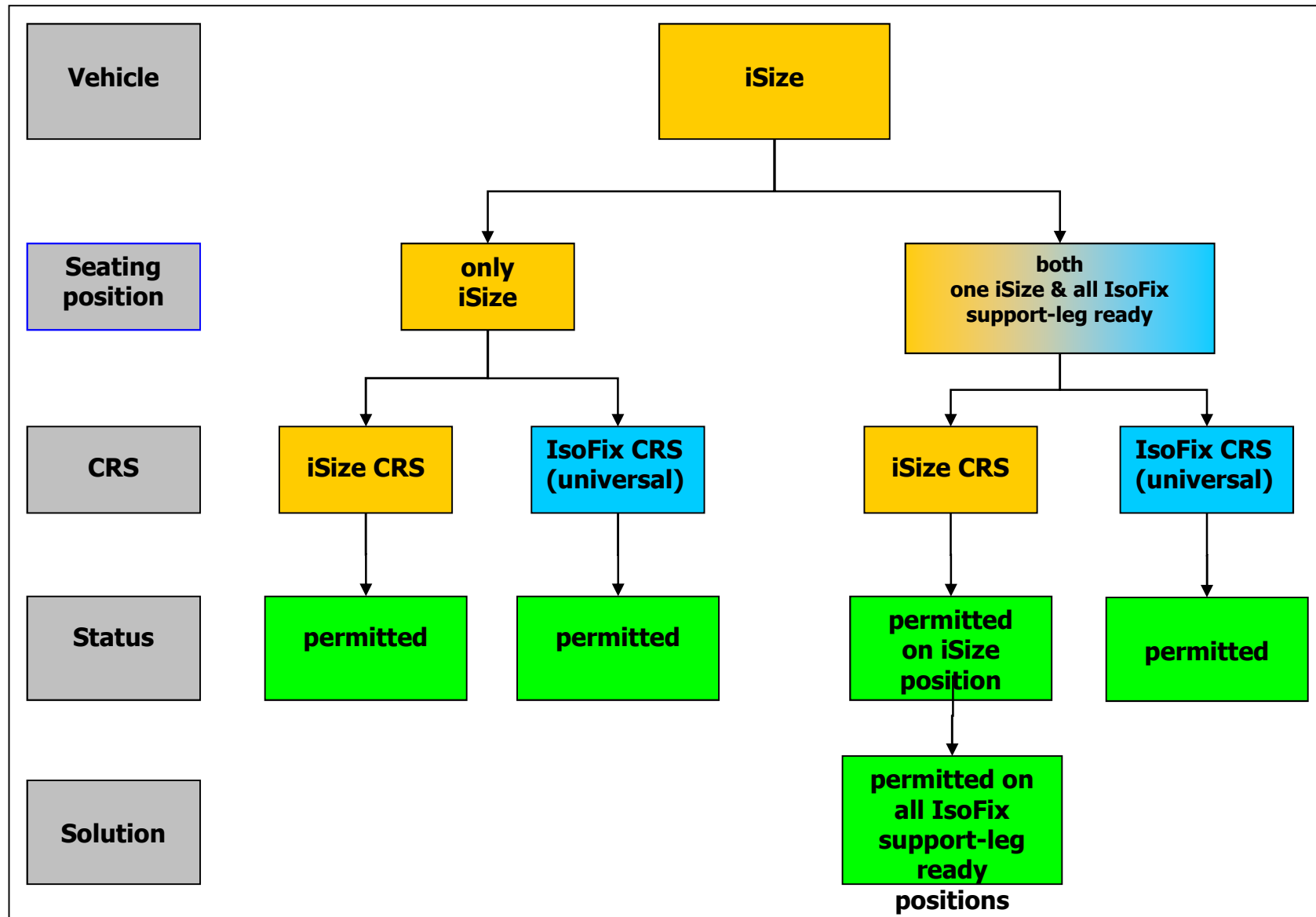


# All iSize CRS with top-tether and optional support-leg





# One iSize position & All IsoFix positions support-leg ready



## **Vehicle manufacturers have to support RF (R2) and FF (F2x)**

- Space for R2 is not always available

### **Solutions**

- offer all IsoFix positions as FF iSize-ready
- offer at least one IsoFix position as RF iSize-ready

## **Vehicle manufacturer explains which position is RF iSize-ready**

- customer can check at which position the RF iSize-ready CRS fits

## **Passenger seat in most forward position should be possible**

## **It should be possible to use two positions at the same time**

### **Alternative**

- iSize ready vehicles with all IsoFix positions iSize-ready  
Risk exists that the number of iSize-ready vehicles will be very limited (this concerns also small family cars)