



SLICE Updates for FLEX-GTR

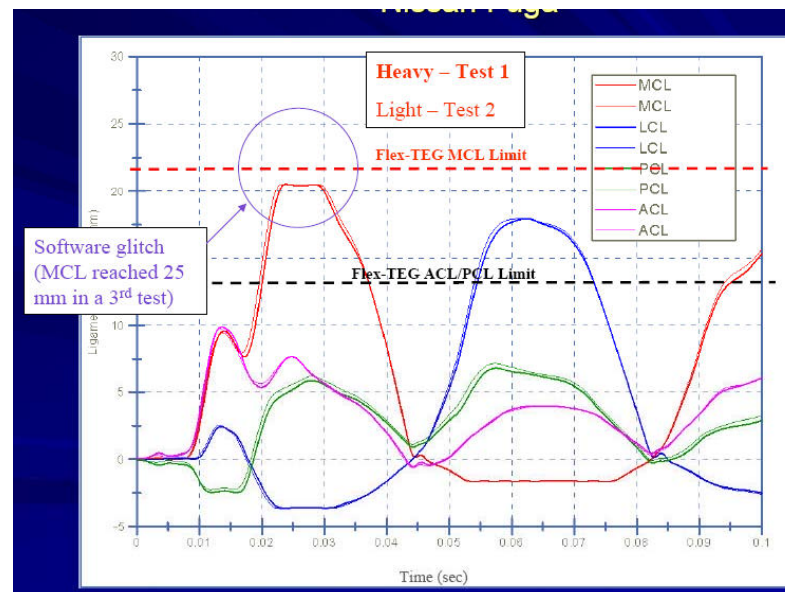
December 2, 2009

Software Problems Reported with FLEX-GTR - Overview

- FLEX-GTR testing was performed using SLICEWare 1.02.103.
- Several improvements to SLICEWare have been completed
- Latest version is 1.02.143

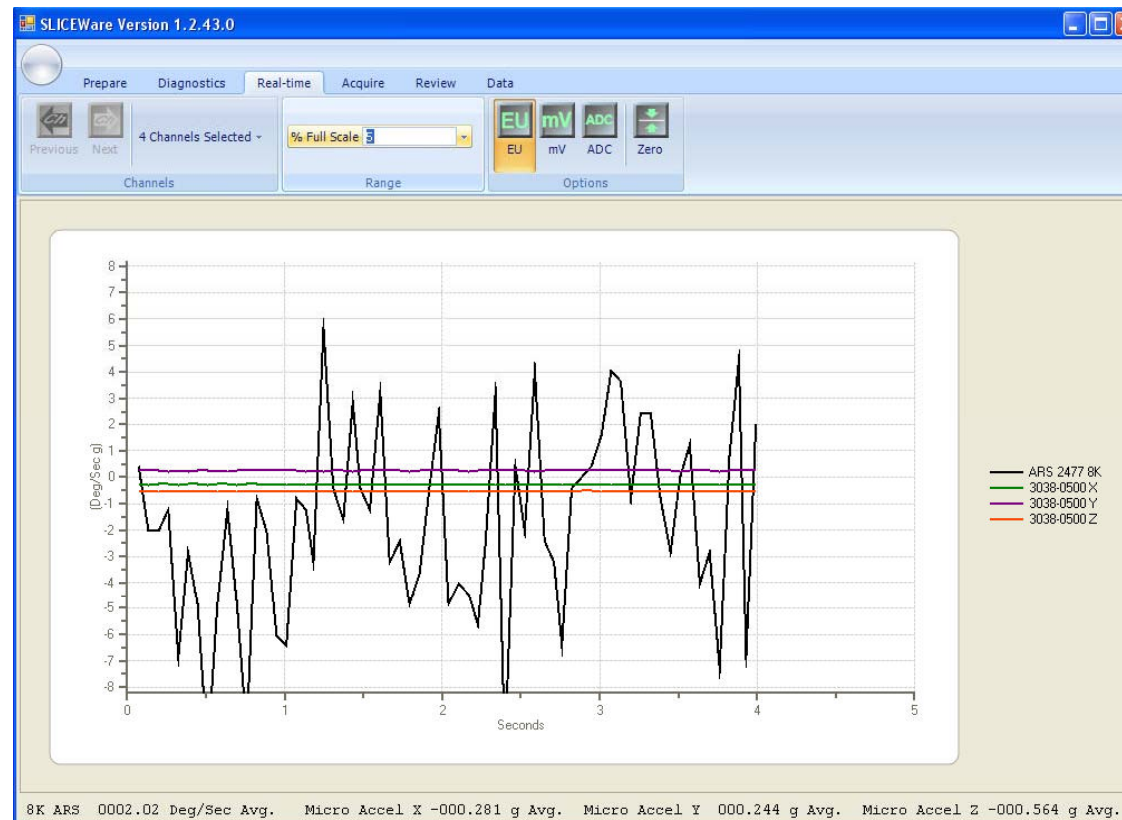
Specific Problems Reported

- Ligament full scale – Previously there was interaction between the hardware offset compensation and the software offset compensation. This has been corrected in SLICEWare 1.02.133



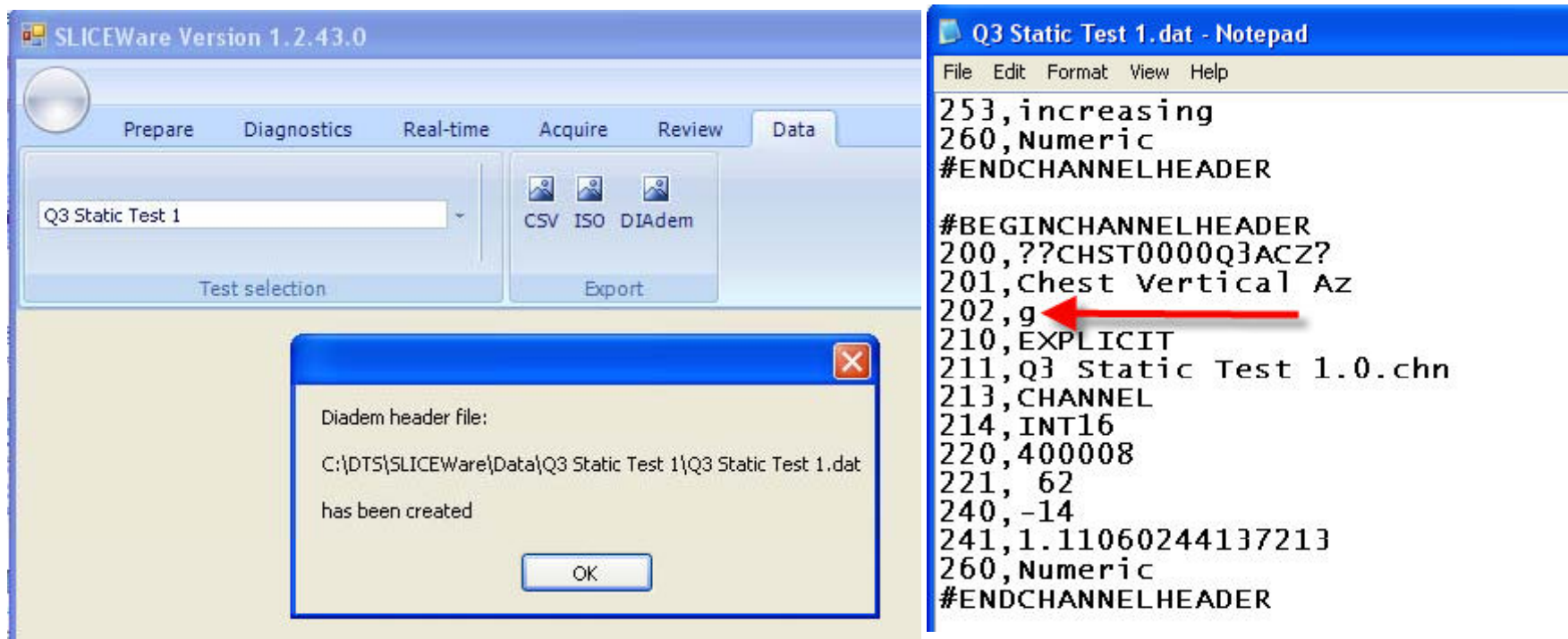
Specific Problems Reported

- Plotting multiple channels – This feature will be added in the first quarter of 2010



Specific Problems Reported

- DIADEM export – This has been corrected in SLICEWare 1.02.133



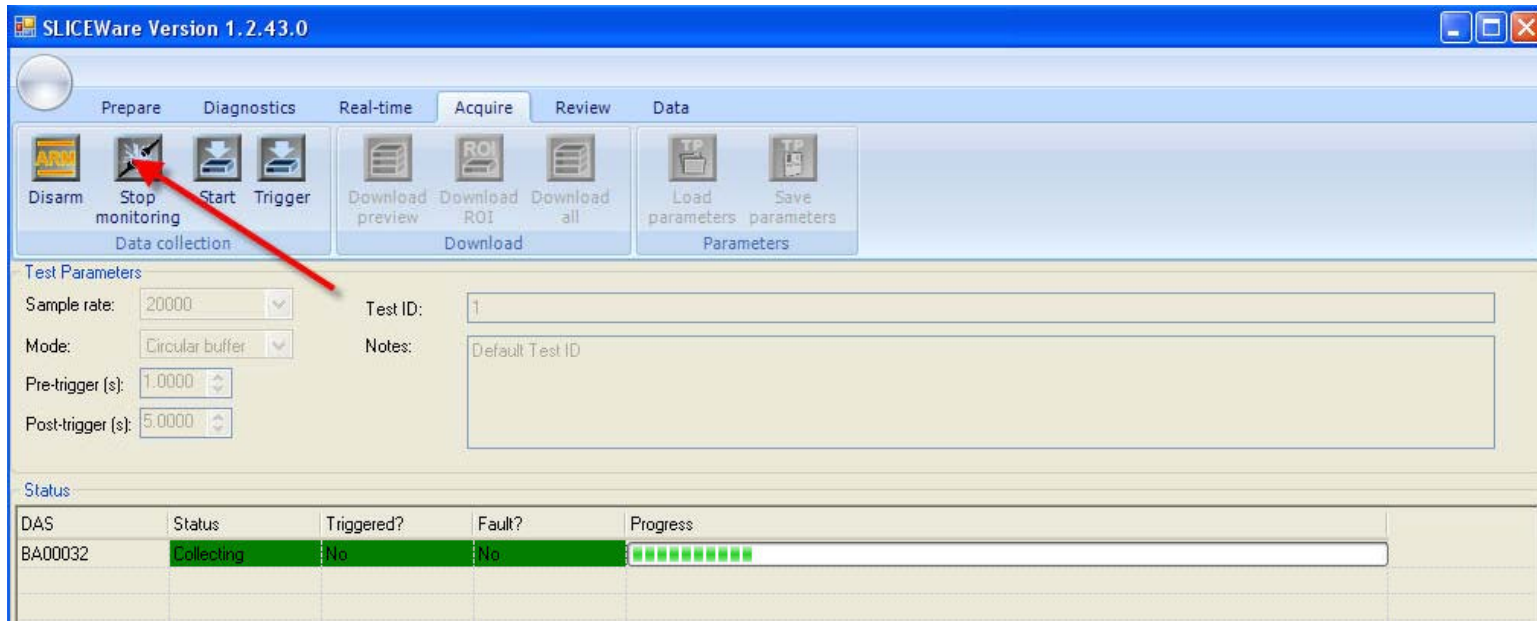
The screenshot displays the SLICEWare software interface and a Notepad window showing the output of a DIADEM export. The software window shows the 'Data' tab with 'Q3 Static Test 1' selected and the 'Export' button. A dialog box indicates that the 'Diadem header file: C:\DTS\SLICEWare\Data\Q3 Static Test 1\Q3 Static Test 1.dat has been created'. The Notepad window shows the content of the .dat file, with a red arrow pointing to the line '202,g'.

```
SLICEWare Version 1.2.43.0
Prepare Diagnostics Real-time Acquire Review Data
Q3 Static Test 1
Test selection CSV ISO DIADEM Export
Diadem header file:
C:\DTS\SLICEWare\Data\Q3 Static Test 1\Q3 Static Test 1.dat
has been created
OK

Q3 Static Test 1.dat - Notepad
File Edit Format View Help
253,increasing
260,Numeric
#ENDCHANNELHEADER
#BEGINCHANNELHEADER
200,??CHST0000Q3ACZ?
201,Chest Vertical Az
202,g
210,EXPLICIT
211,Q3 Static Test 1.0.chn
213,CHANNEL
214,INT16
220,400008
221, 62
240,-14
241,1.11060244137213
260,Numeric
#ENDCHANNELHEADER
```

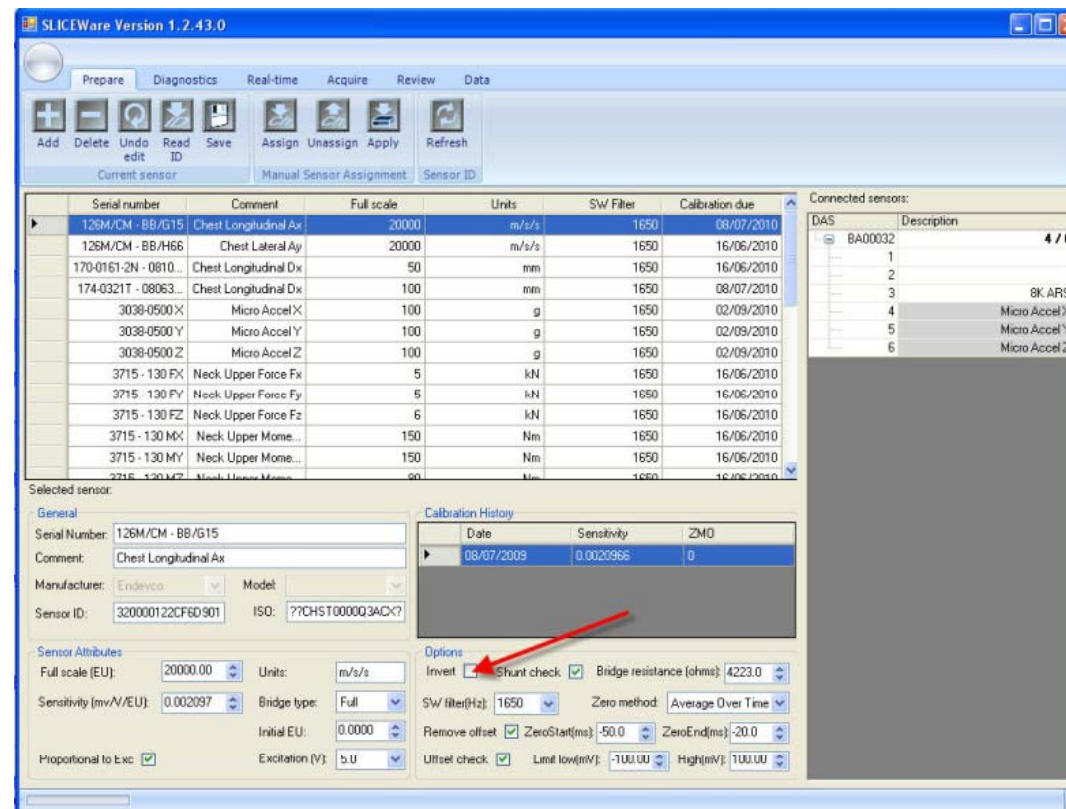
Specific Problems Reported

- Disconnect during status monitoring – this has been corrected in version 1.03.



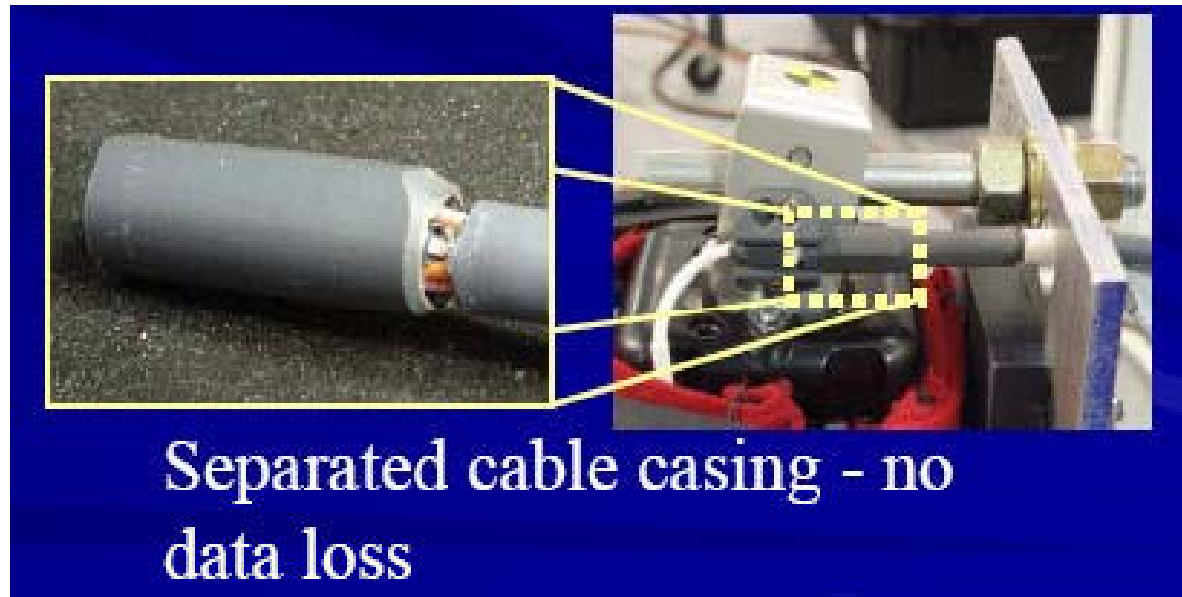
Specific Problems Reported

- Polarity – All versions of SLICEWare offer an easy feature for inverting polarity in software.



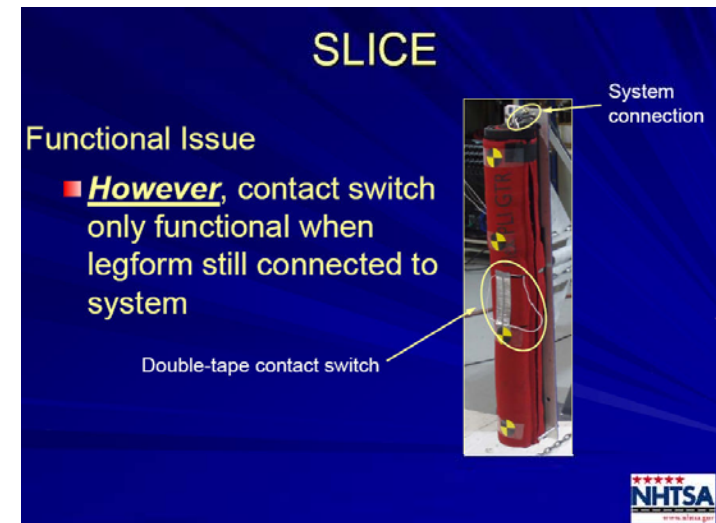
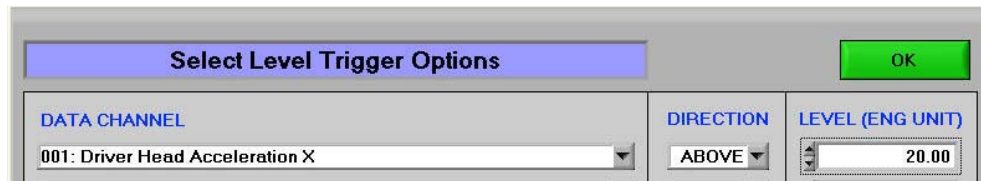
FLEX-GTR Hardware Issues

- Cable separated from back shell – Design has been improved to provide increased strain relief and strength



FLEX-GTR Hardware Issues

- Contact switch – when used with Recorder Mode it is possible to synchronize off board SLICE with FLEX-GTR SLICE
 - Both on board and off board SLICE receive Start Record signal
 - On board SLICE records event through contact switch
 - Using latest software, during download both systems are synchronised based on Start Record signal.
 - Level Trigger Option – first quarter of 2010



Software Problems Reported with FLEX-GTR - Conclusion

- DTS is committed to rapid improvements in the SLICE system and SLICEWare.
- Many of the reported problems have been corrected in SLICEWare 1.02.133.
- The others will be corrected soon.
- New features such as filtered CSV export are being added as well.